

APTFF Capacity Building Workshop on Implementing Trade Facilitation Measures: Perishable Goods & Single Window

**26 September 2014, BITEC
Bangkok, Thailand**



Indonesia National Single Window (INSW)

Indonesia Interagency Integration

Muwasiq M Noor, ST. MT

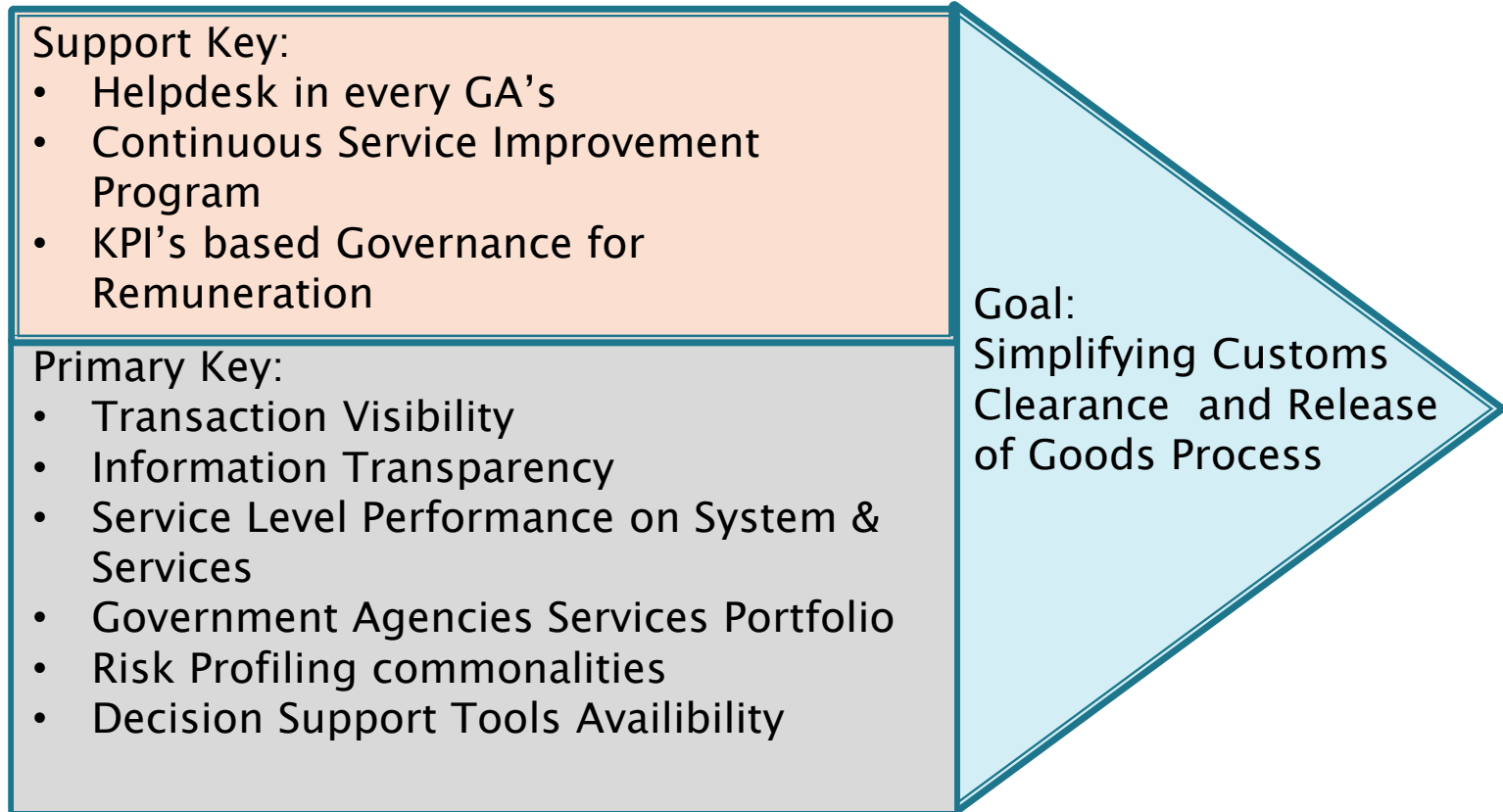
EXPERT

**INDONESIA NATIONAL SINGLE WINDOW PREPARATORY TEAM
COORDINATING MINISTRY FOR ECONOMIC AFFAIRS OF INDONESIA**

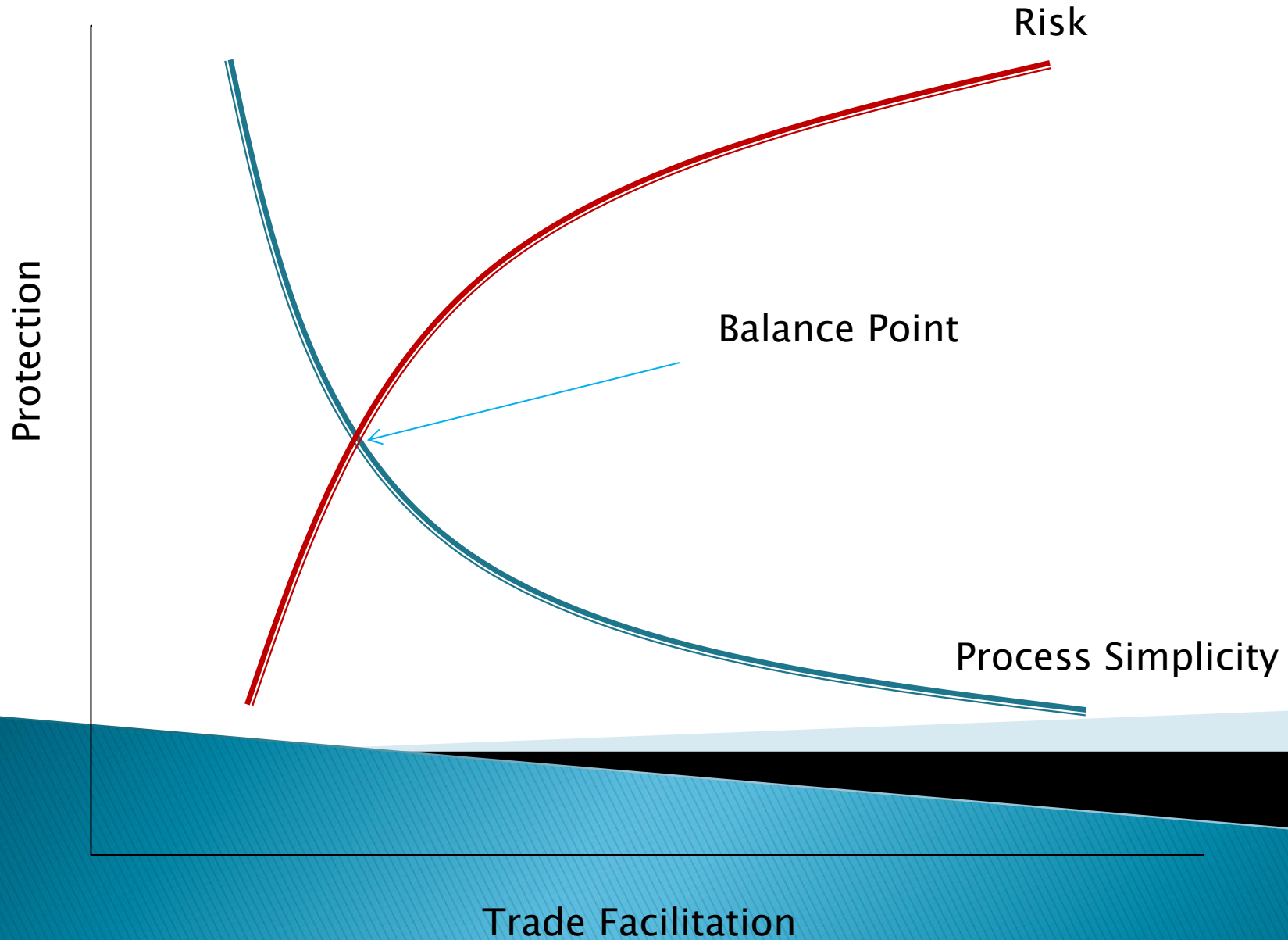


<http://www.insw.go.id>

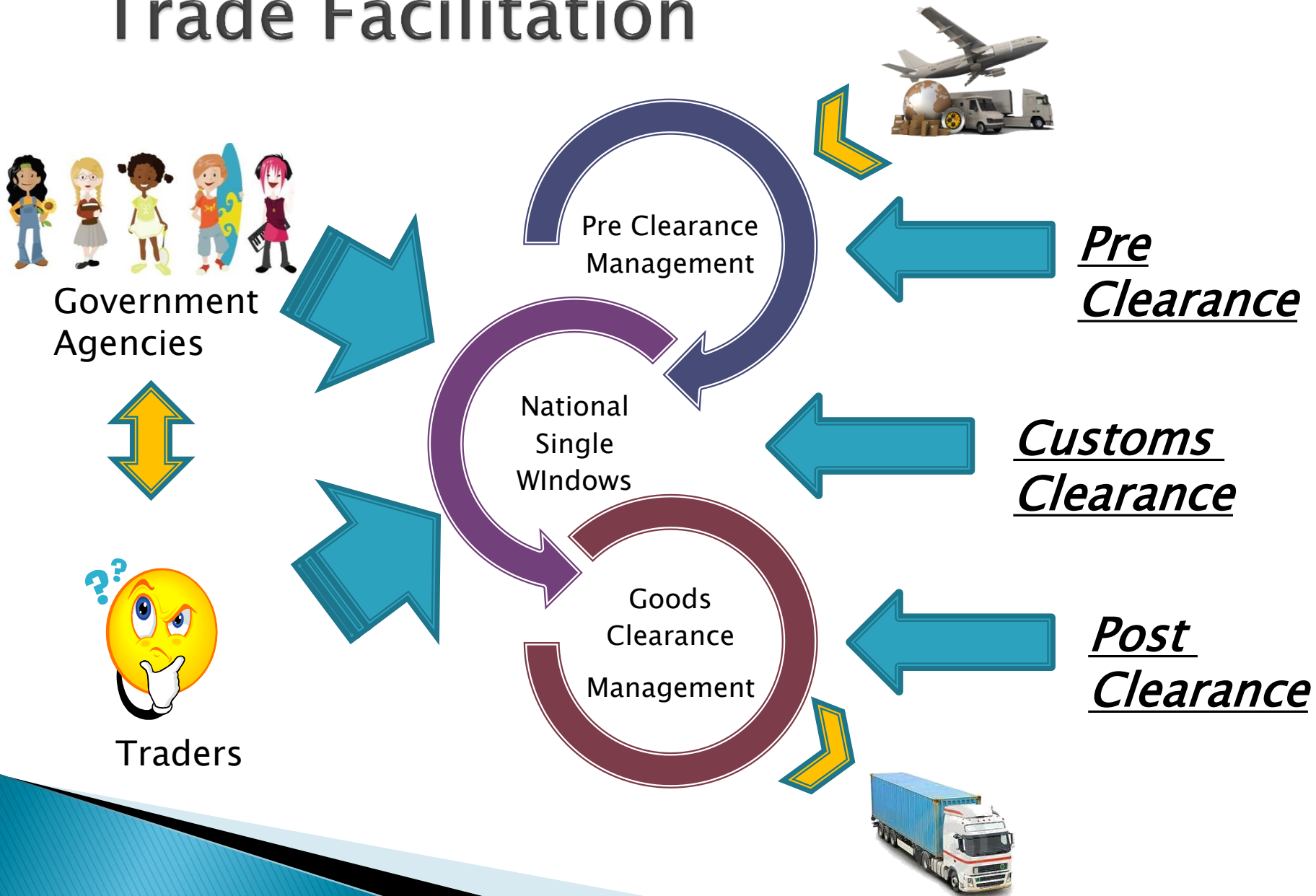
Business Value Chain of INSW



INSW, Balancing Trade Facilitation with Border Protection



Information Flow Indonesia Trade Facilitation



INSW, Dealing with

- ▶ Flow of Documents and Data's
 - Permit Documents and Data's
 - Customs Declaration and Data's
 - Import–Export Regulation Documents and Data's
 - Duty Payment Documents and Data's
 - Port Clearance Services and Data's
 - Agencies Inspection Document's and Data's

TF Measures on WTO, How INSW Help Indonesia Comply with it, based on Agreement On Trade Facilitation

MINISTERIAL DECISION OF 7 DECEMBER 2013

Transparency and Appeals

- ▶ Publication/internet publication 
- ▶ Enquiry Point for trade information 
- ▶ Opportunity to comment
- ▶ Consultations 
- ▶ Advance rulings
- ▶ Right of appeal

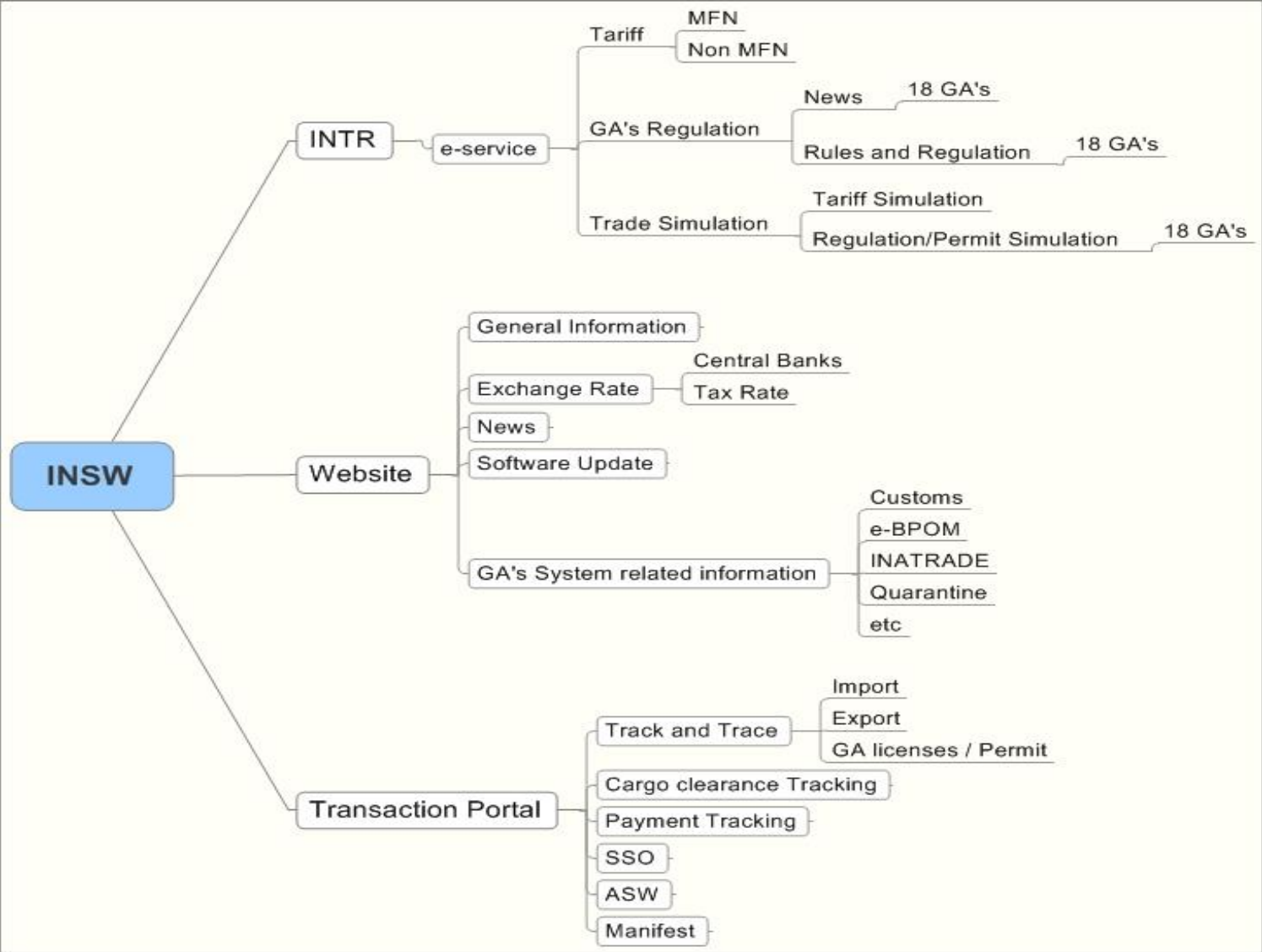
Transit

- ▶ Restrictions on fees and charges
- ▶ Use of guarantee

Import/Export/Transit Fees & Formalities

- ▶ Disciplines on fees 
- ▶ Pre-arrival processing 
- ▶ Risk management 
- ▶ Post clearance audit
- ▶ Publish average release times 
- ▶ Authorized operators
- ▶ Border agency cooperation 
- ▶ Review formalities and documents
- ▶ Single window 
- ▶ Eliminate use of PSI for tariff classification and customs valuation.
- ▶ Separate release from clearance 

Mind Map: INSW Portal



Pre Clearance Management

- ▶ Before Doing Import and Export Activities, Trader Need information from relevant agencies on:
 - What is the license/permit required for importing/exporting such commodities
 - How much is the tariff / duty rate
 - How is the procedure to lodge the declaration

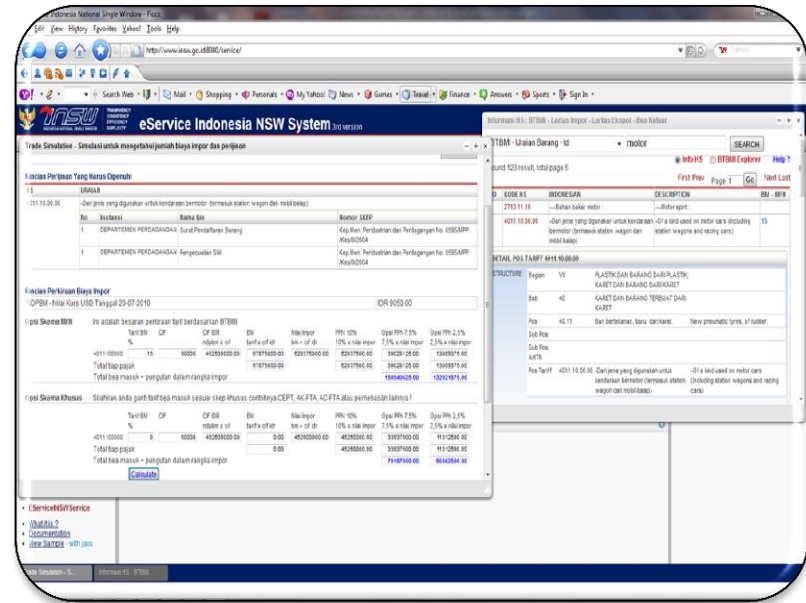
Here how INSW help pre clearance process using National Trade Repository features

Before INSW



- One Update, One Version
- Only covering Tariff

After INSW



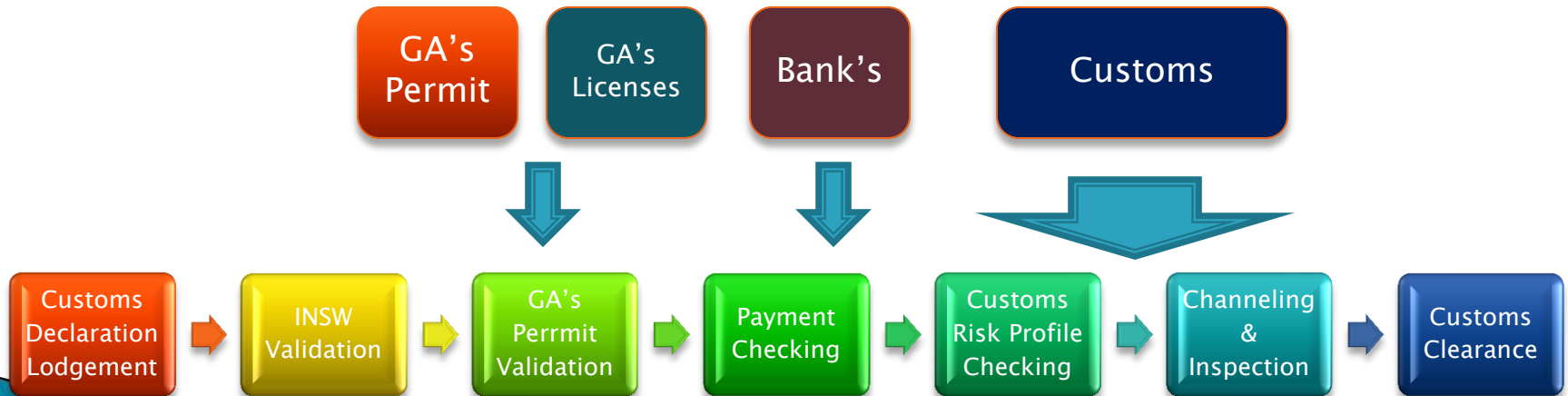
- Any Update, One Access, Real Time
- Covering Tariff, Regulation of related GA's and Trade Simulation.

The Process

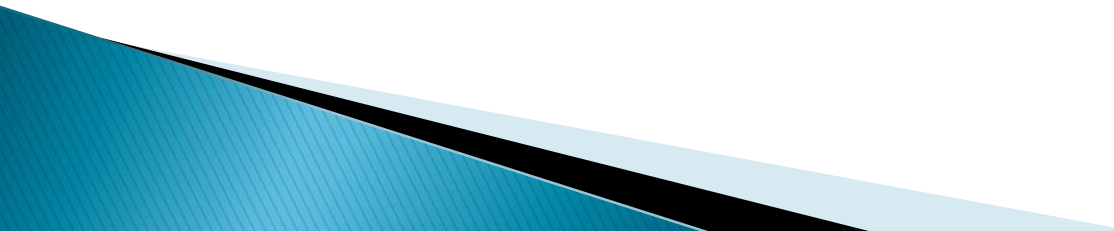
▶ Pre Clearance



▶ Customs Clearance



Here How INSW help customs clearance process using INSW Transaction Sub Portal

- ▶ Integrating process from customs declaration lodgment, commodity control and prohibition validation, permit and licenses auto verification to 18 GA's e-permit system, duty rate and payment status validation to bank's, customs backend system risk profile endorsement, to auto release of Customs Clearance Permit (SPPB).
- 

Here how INSW help the Customs clearance process using Track Trace Facility

Concorde Hotel Singapore x Indonesia - National Singl x

apps1.insw.go.id/index.php?action=tracking

09:49:48 16-09-2014 1

50 0000000-005363-20140915-006157 40300 PT. GUNANUSA ERAMANDIRI PT. ANDRIAN TRANSPORTASIPERKASA BC - SPPB

Customs Declaration

Declaration tracking

No.	KPBC	Tgl. Respon	Waktu Respon	Uraian Respon	Pejabat	No. PIB	Tgl PIB
1	040300	16-09-2014	0947	300-SPPB	-	371908	16-09-2014
2	040300	16-09-2014	0946	100-Penerimaan Data PIB	-	-	-

Respon PIB

BC - SPPB 16-09-2014 09:49:46
BC - PENERIMAAN 16-09-2014 09:49:29
BC - PROSES KEPABEANAN 16-09-2014 09:44:49
NSW - CEK MANDATORI KONTEN 16-09-2014 09:41:50
NSW - PENERIMAAN DOKUMEN 16-09-2014 09:41:16

GA's Permit Information

No.	No. Ijin	Tgl. Ijin	NPWP	Nama	GA	Ijin	Status	Detil
1	201420300K02I020342	08-09-2014	015938269431000	PT. GUNANUSA ERAMAND	Karantina Tumbuhan	KT 2 - Surat Persetujuan Pelaksanaan Tindakan	Sudah dipakai	Detil

Download PIB (Pdf)

Lihat Status EDII

Larangan Pembatasan (Pejabat: SYSTEM) : Lihat

Payment Information

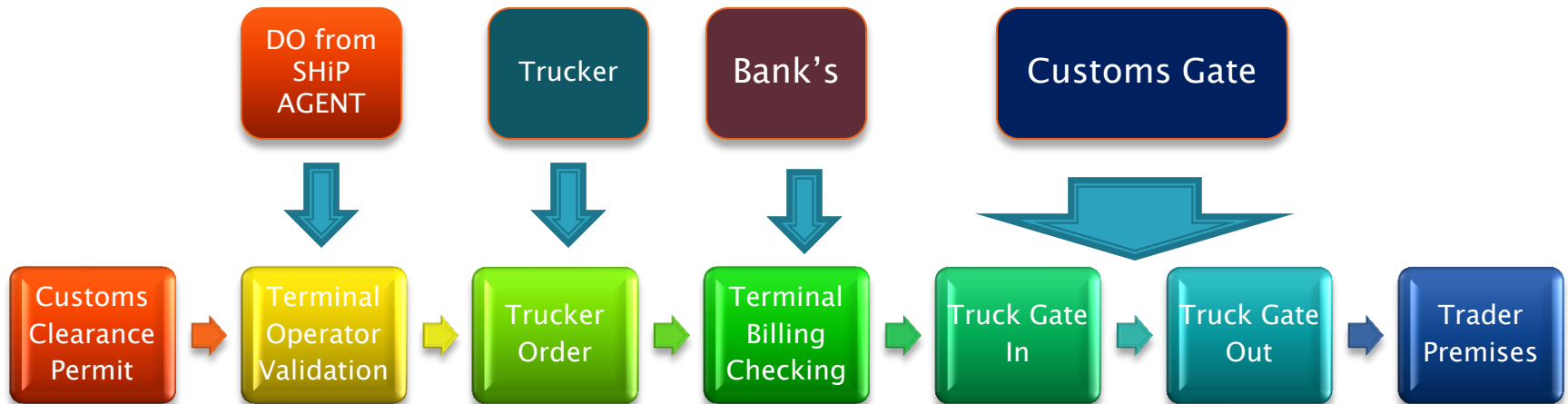
SSPCP	CAR	KODE KANTOR	NO SSPCP	TGL SSPCP	PENERIMA SSPCP	PENYETOR	STATUS
00000000536320140915006157	040300	0080745489137	15-SEP-14	PT.BANK MANDIRI	GUNANUSA ERAMANDIRI	BC-Rekonsiliasi	

51 0000000-000222-20140909-005563 050100 PT. MENJANGAN SAKTI NSW - KONF. SKEP LARTAS 16-09-2014 09:49:42 117

- Track everything in one 'window'

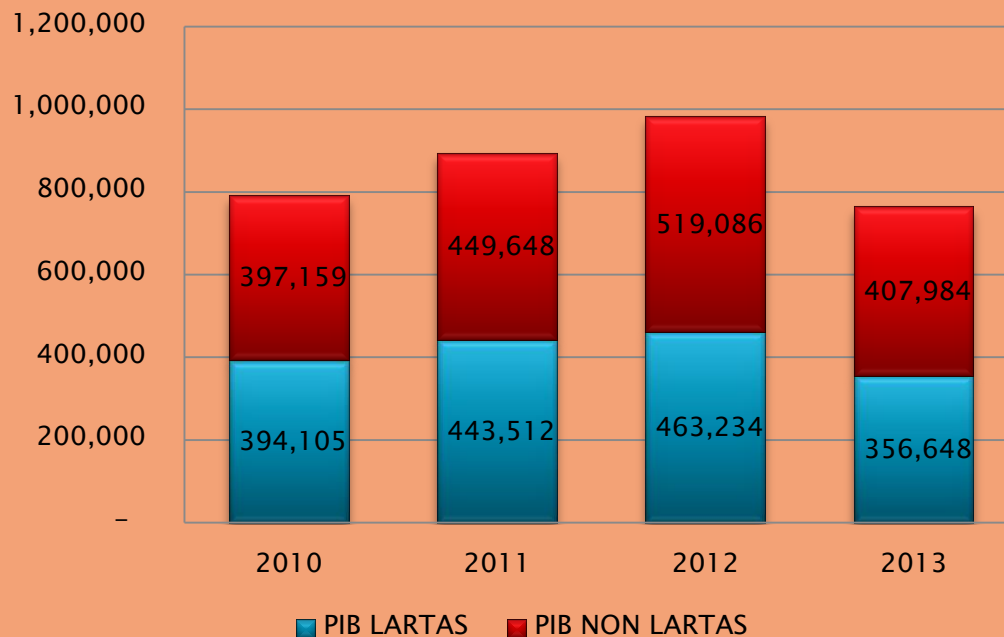
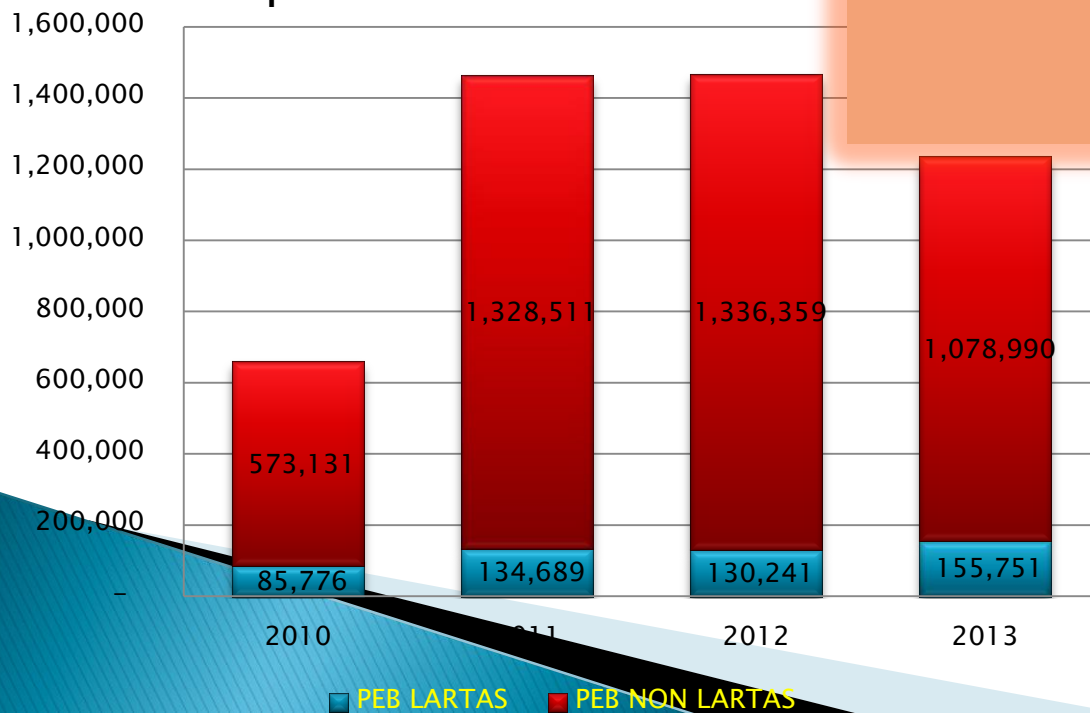
The Process (Cont'd)

► Post Clearance (Goods Clearance)



INSW import/export controlled list of goods transaction statistic

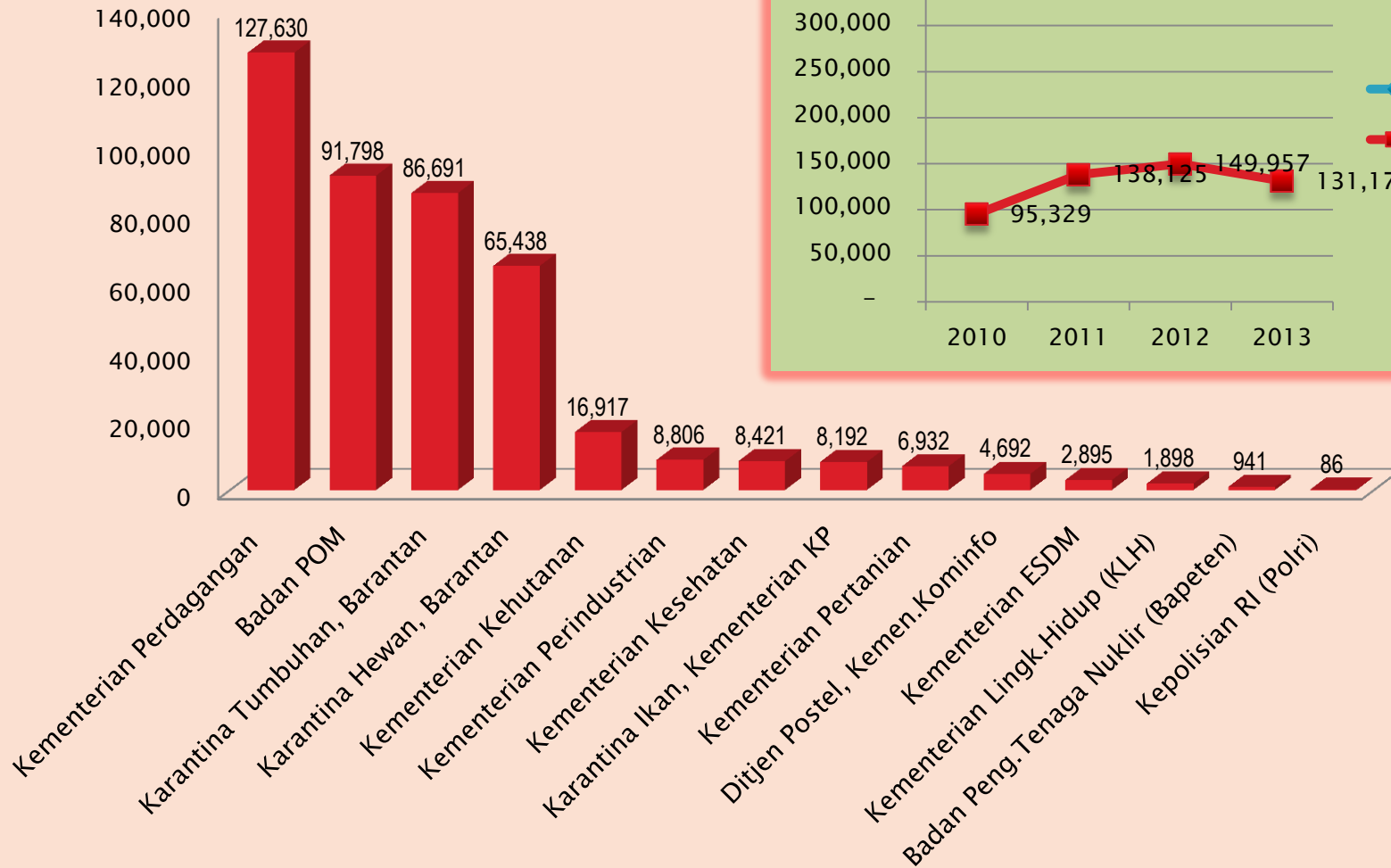
Export



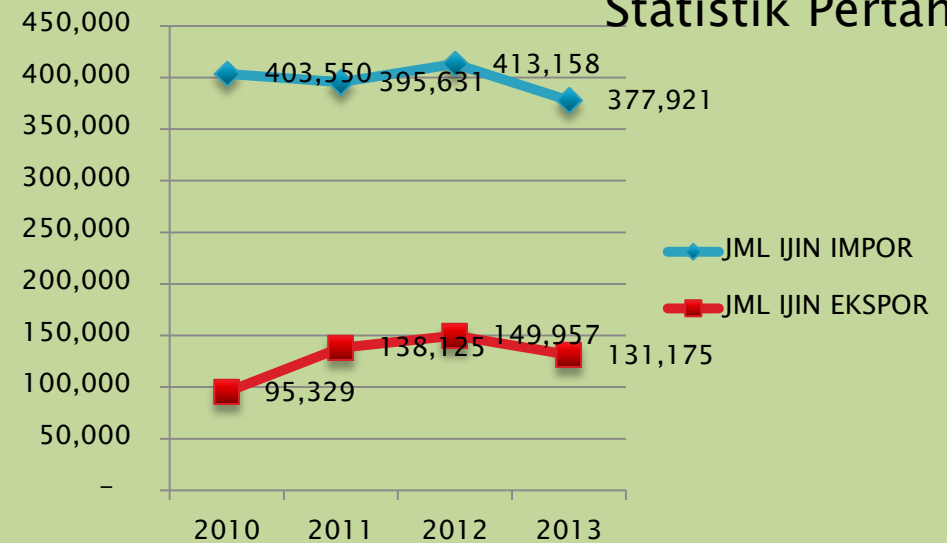
Import

INSW GA's Licenses statistic (2012)

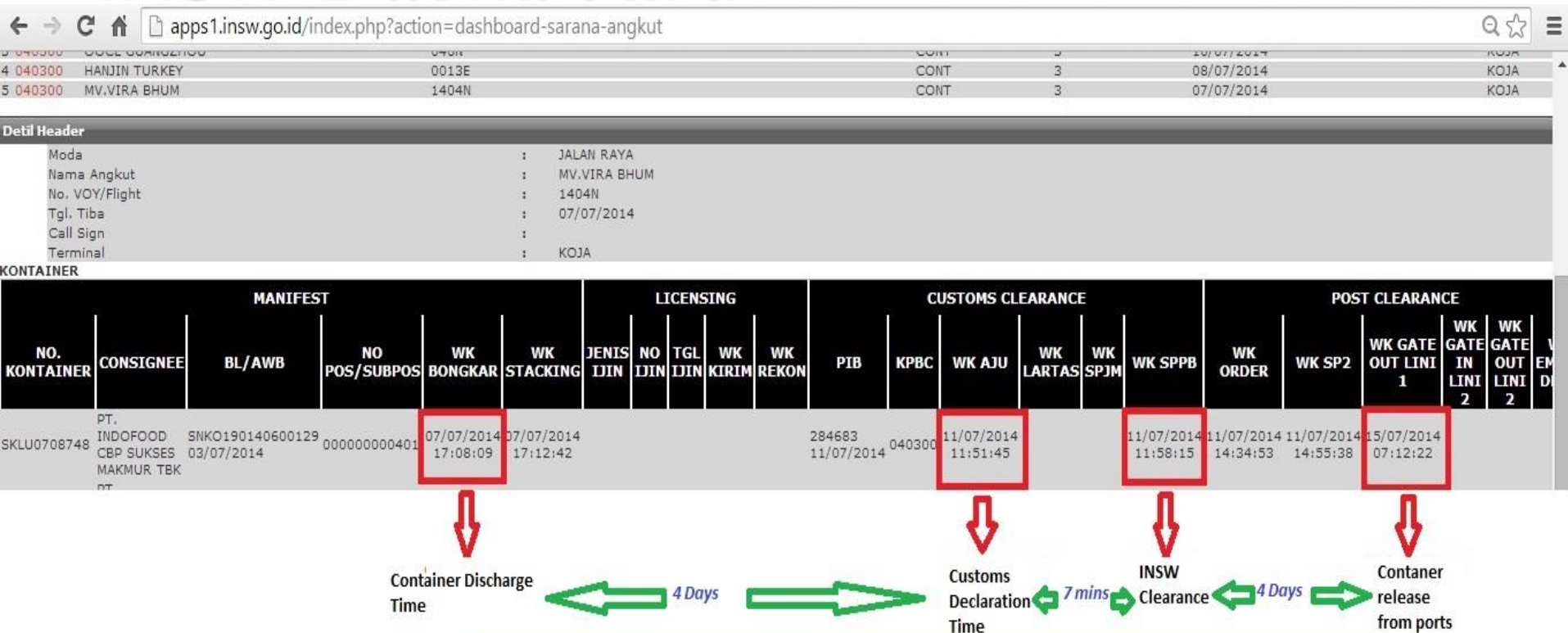
Statistik Per- Kementerian/Lembaga



Statistik Pertahun



Service Level Measurement under INSW Dashboard

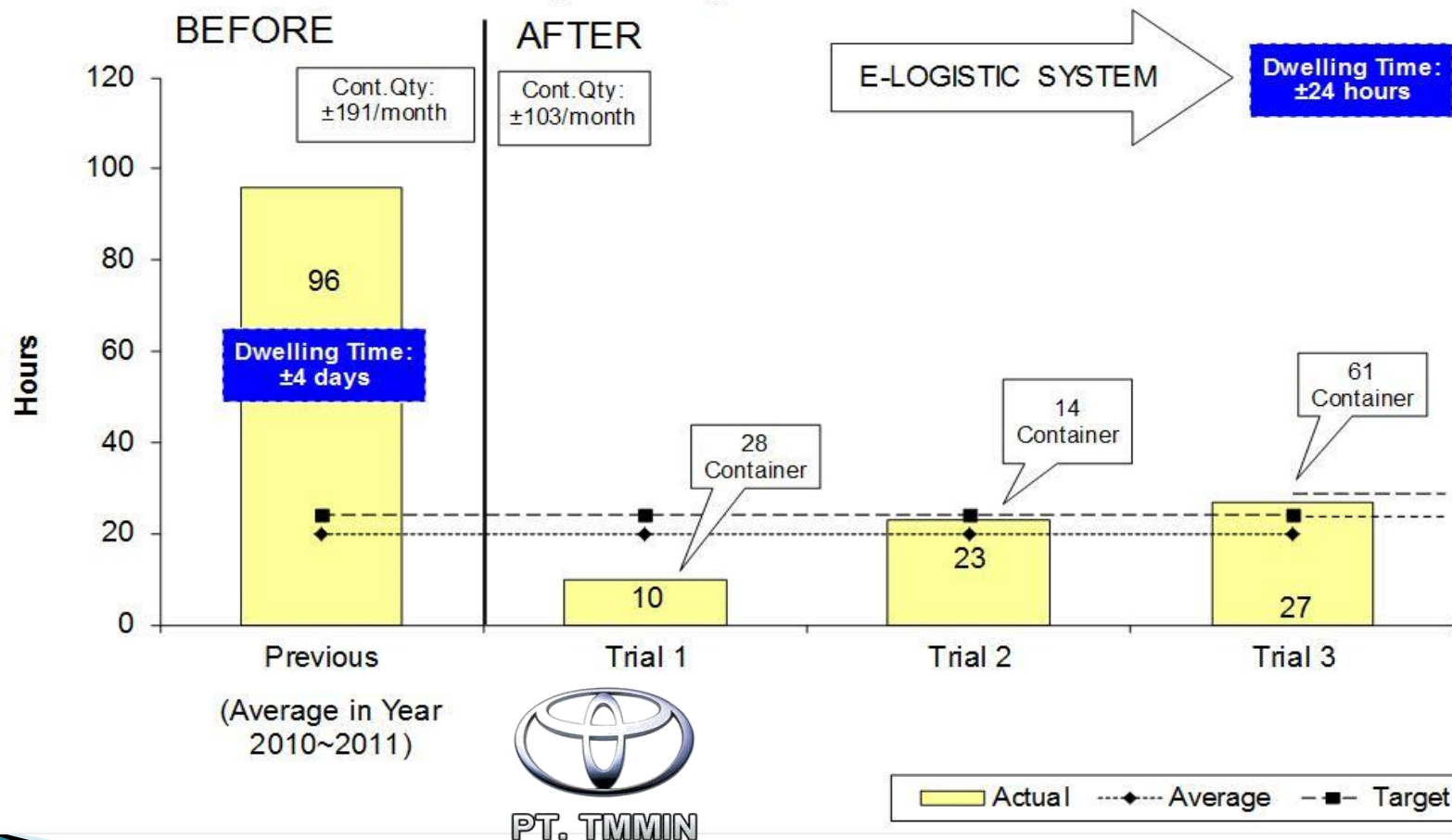


Survey Result :

- Delay of Customs Declaration lodgement because lack of document, including hardcopy of COO
- Delay of Contanier process because of company policy keeping the container inside the container yards until they need for production

Dwelling Time Improvement Toyota Case, Integration of INSW and Port Community System

Summary Dwelling Time at KOJA Port



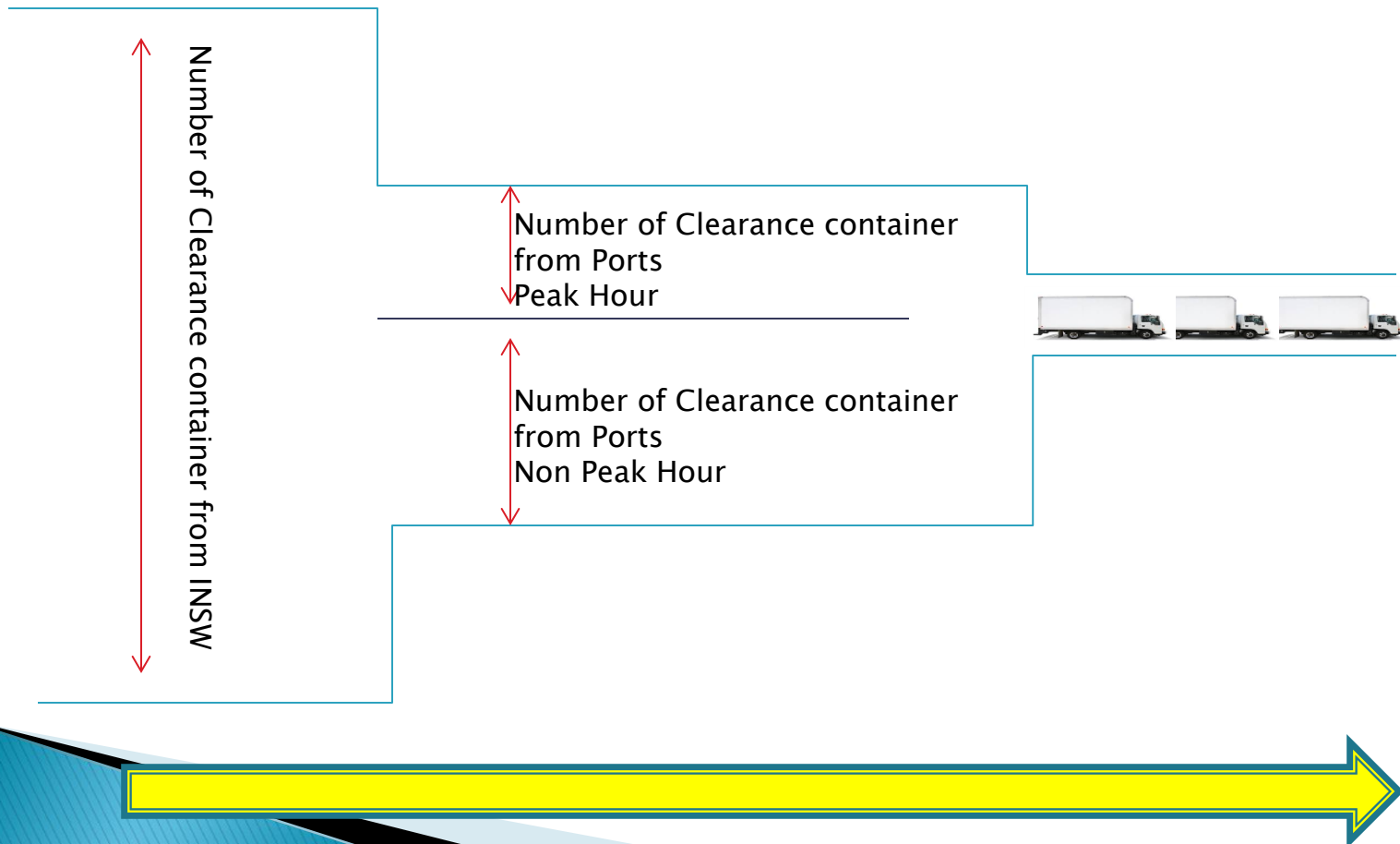
What else the problem??

- ▶ Here is our biggest problem, Port Road Capacity....



What we are still doing now is:

- ▶ Integration of INSW with Port Management System for Bottleneck Road Capacity Planning

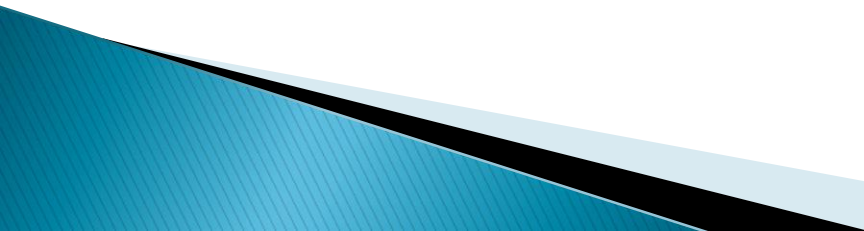


INSW Latest Status and Future plan

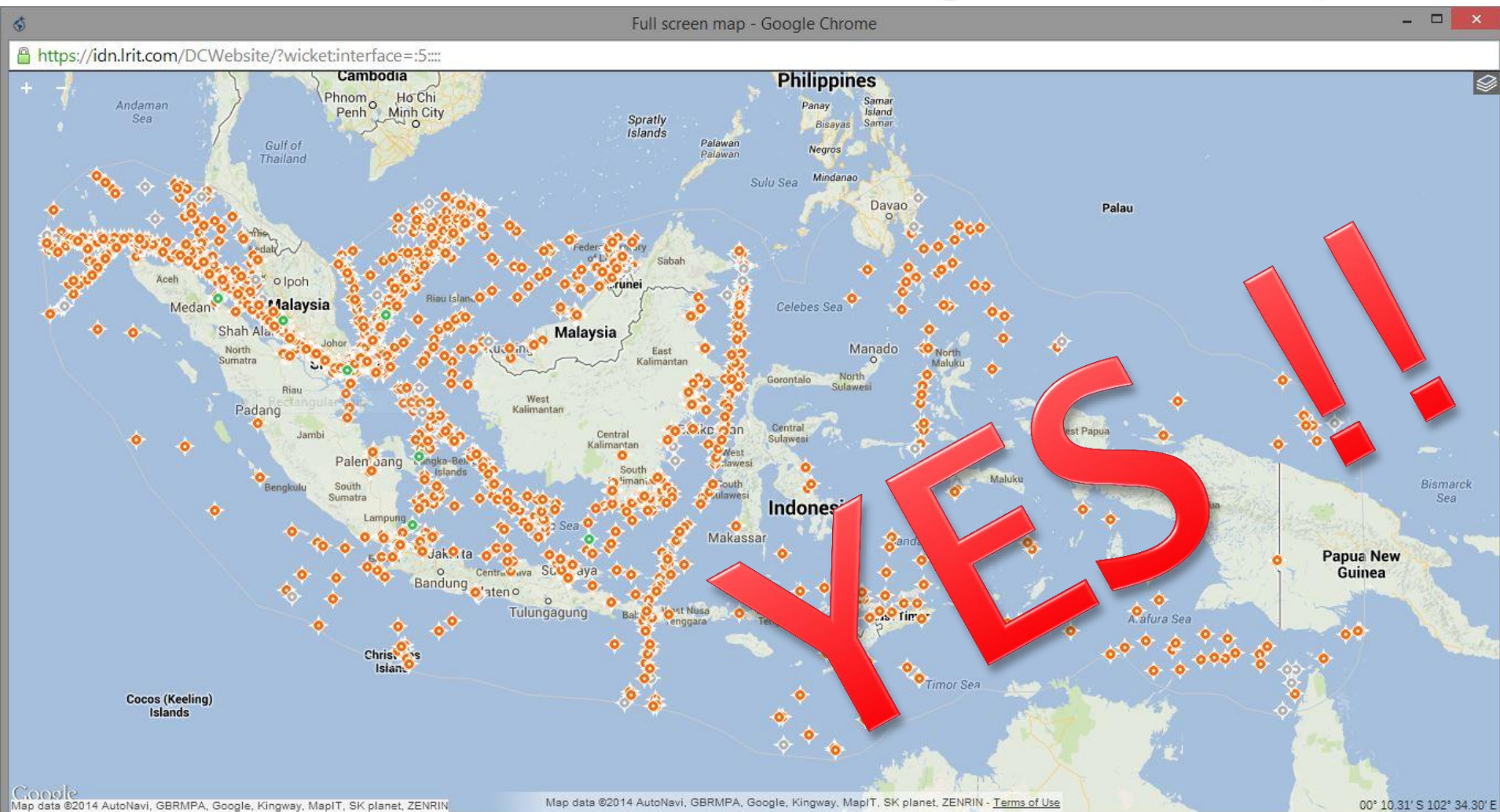
Latest Development

- ▶ Integrating 18 GA's license/permit issuance system with INSW clearance system.
- ▶ Integrating 2 GA's recommendation issuance system with GA's license/permit issuance system
- ▶ Integrating INSW clearance system with Port Community System (PortNet)
- ▶ Served 9 Main Ports and Has been expanded to 7 other ports nationwide (Total 16 ports)
- ▶ President of Republic of Indonesia has released Presidential Regulation ref. 76/2014, mandating permanent body of INSW to manage, enhance and operate INSW.

Next Plan

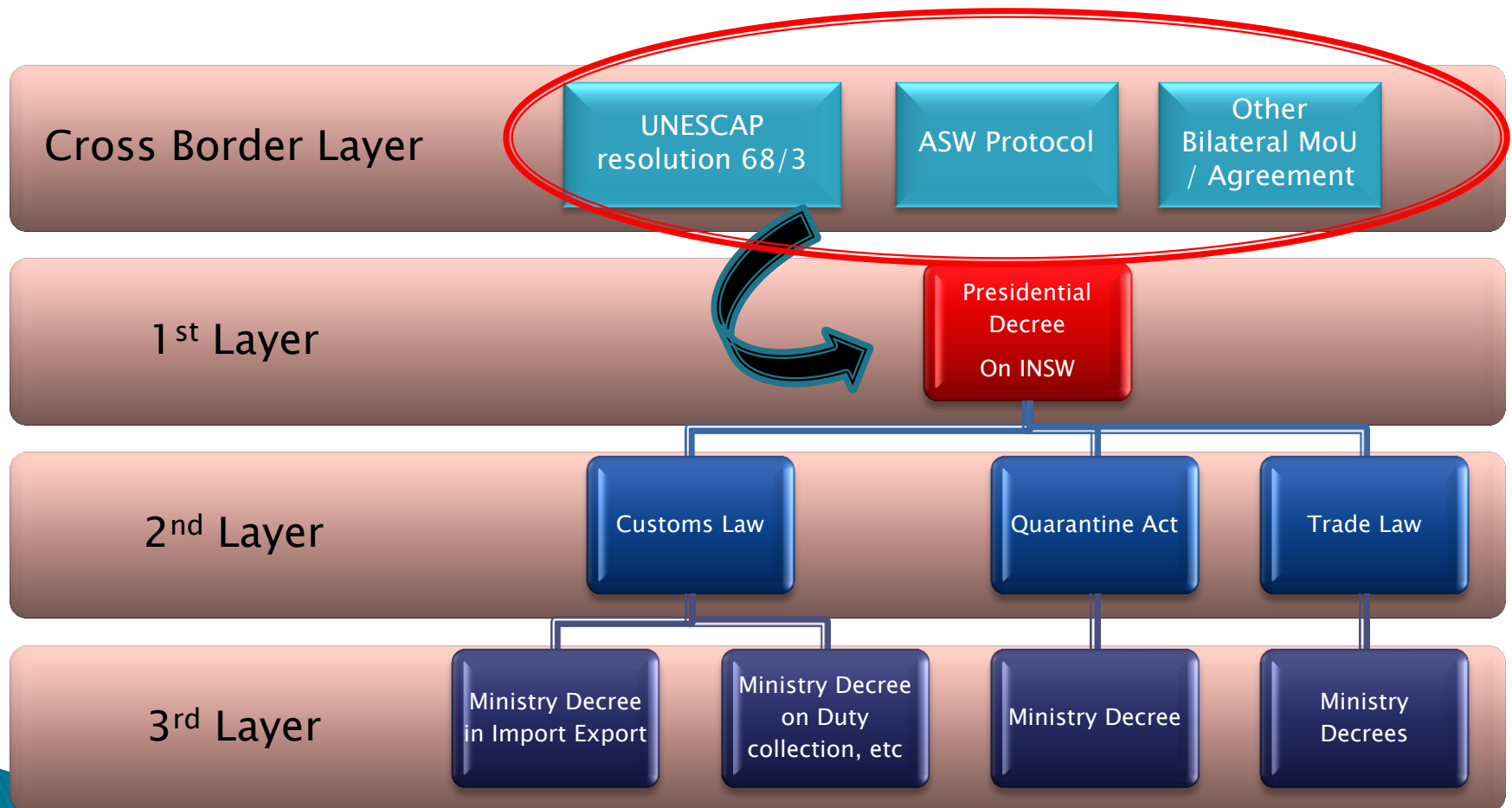
- ▶ Integrating all government payment services under INSW e-payment programs
 - ▶ Automating process on Bonded Warehouse and Customs Warehouse Management System with GA's licenses issuance system.
 - ▶ Nationwide coverage expansion
 - ▶ Integrating the process of monitoring movement of transport and logistics with INSW process (LRIT, AIS, etc.)
- 

By the end, after all system has been integrated, Can we identify How many of these vessels are not declaring their activity??



<http://idn.lrit.com>

Legislation on Indonesia before and after Cross Border





Thank You

<http://www.insw.go.id>

<http://eservice.insw.go.id>