

# IMPACT INVESTMENT EXCHANGE ASIA

*...capital markets for social good*

**Making a Difference in Asia  
3 November 2009**

# Impact Investment Exchange (Asia)

. . . creating a trading platform for securities  
issued by Social Enterprises.



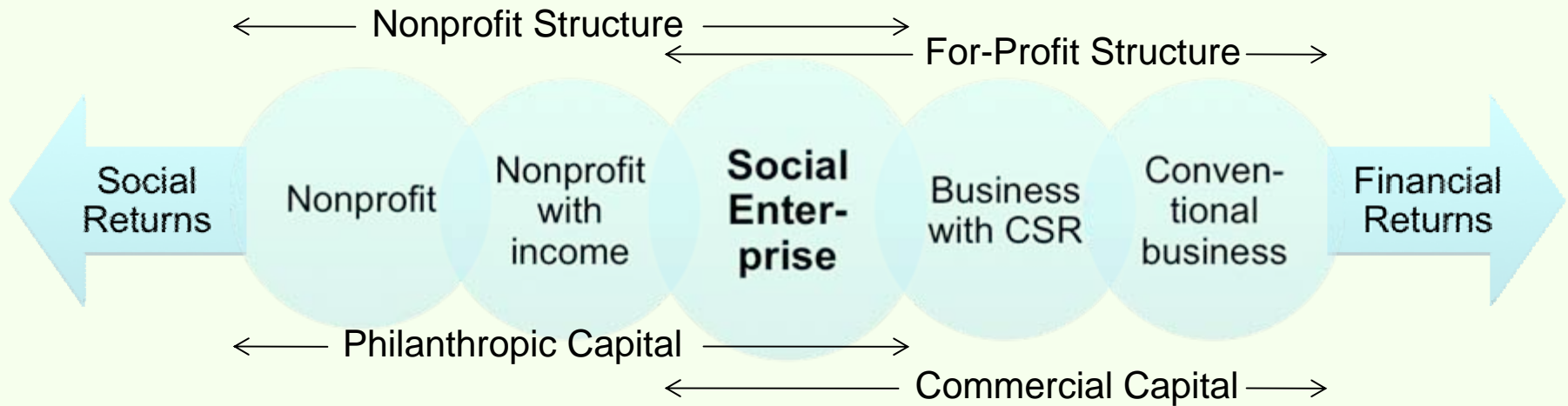
## The Mission

To provide a liquid and transparent market where  
*Social Enterprises* can raise capital for expansion to  
multiply their social and environmental impact

- and -

*Impact Investors* can achieve both financial  
and social / environmental returns.

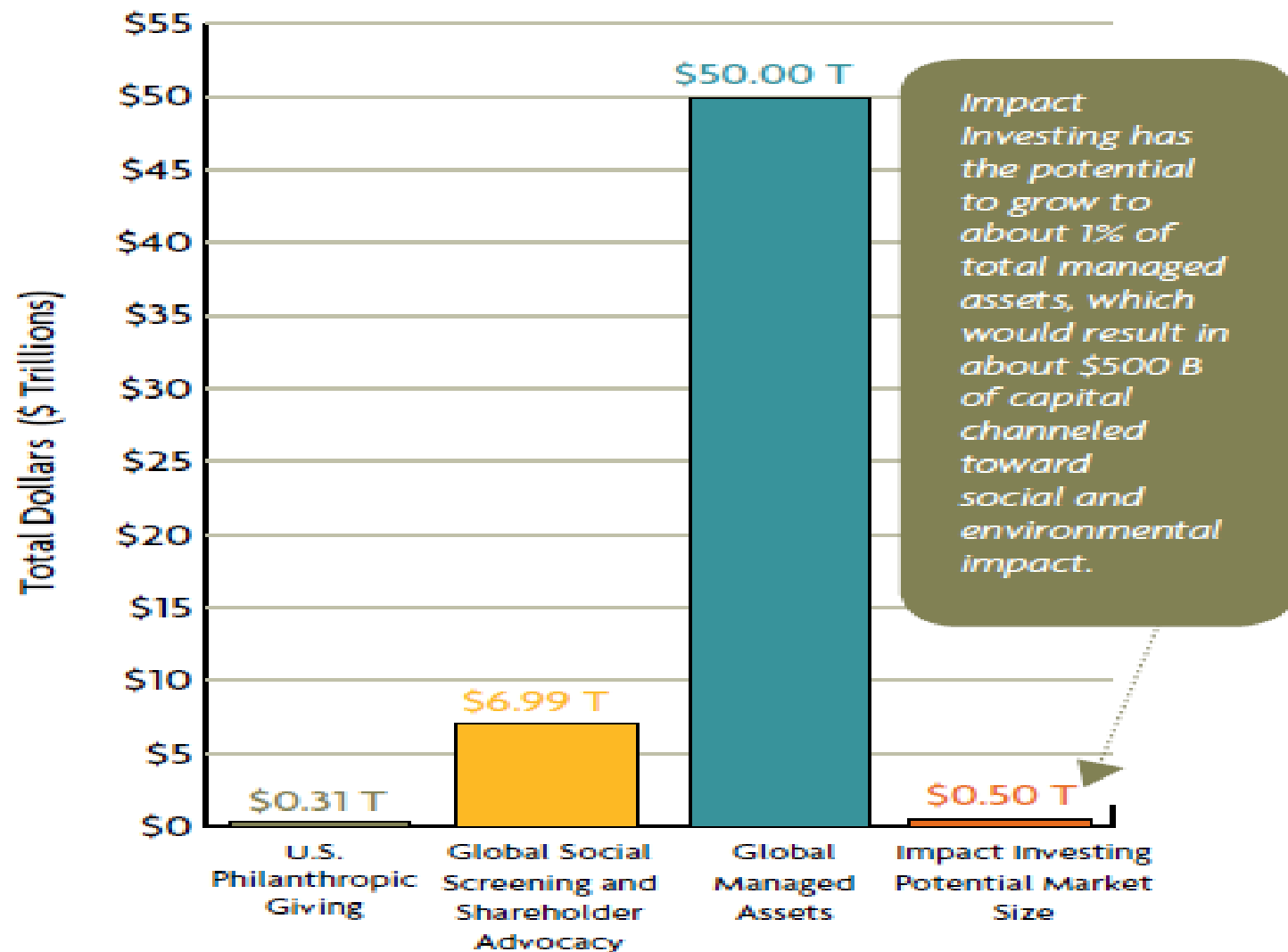
# Social Enterprise



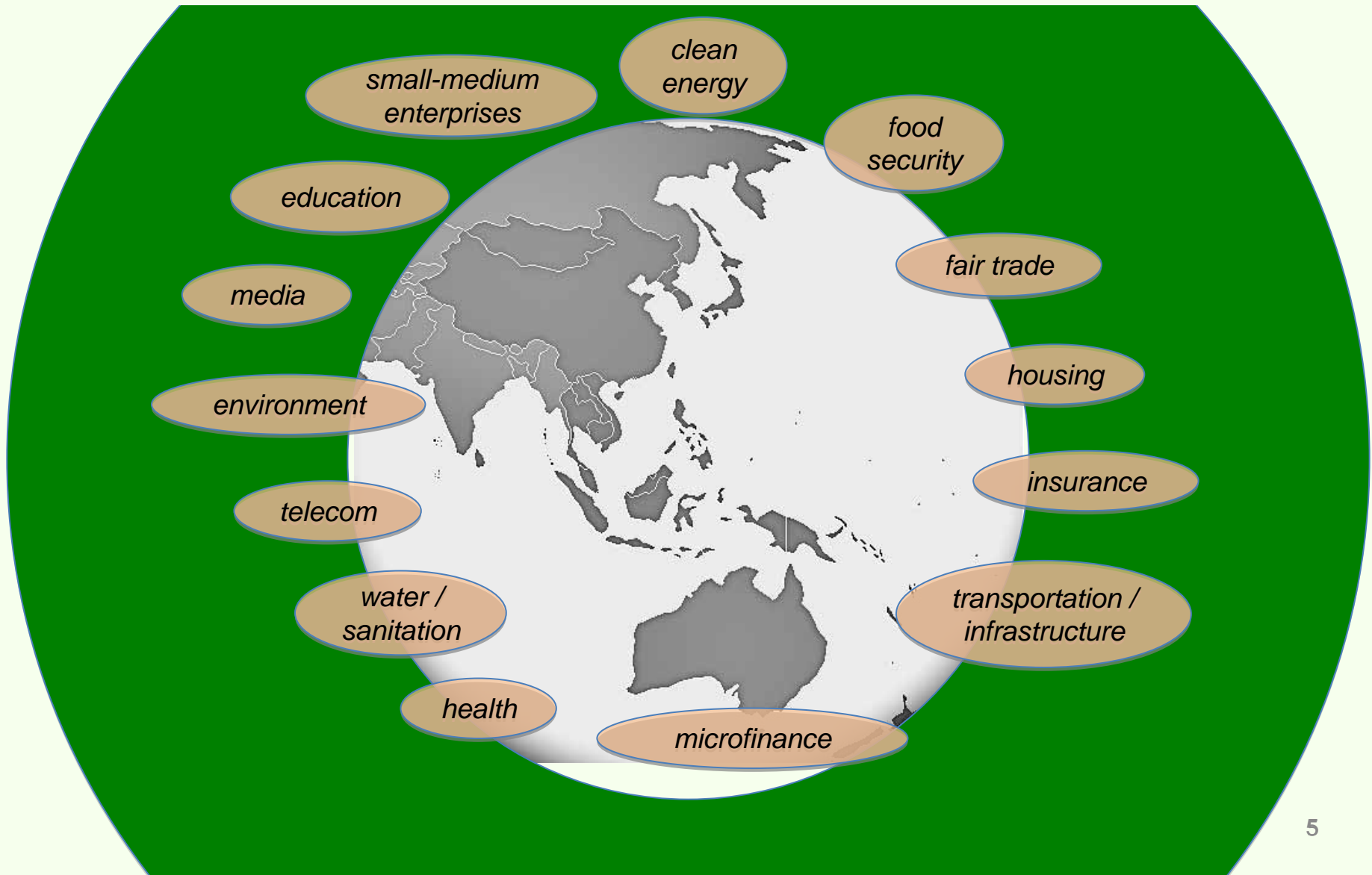
## Social Enterprises:

- Social mission-oriented for-profit
  - OR business-oriented non-profit
- Emphasis on sustainability

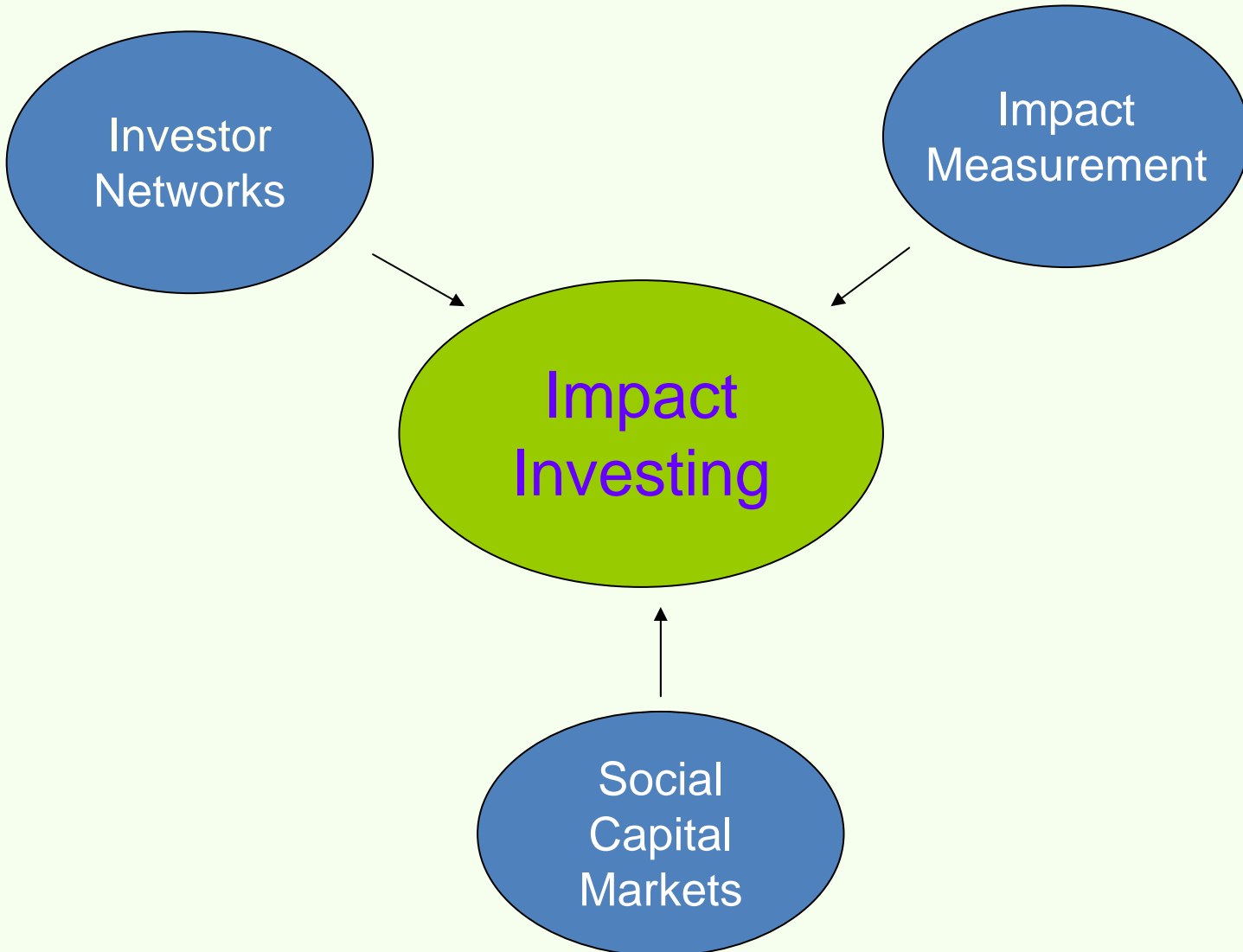
## Comparative Market Sizing



**A diverse Asian Social Enterprise sector has emerged to tackle a variety of social problems.**



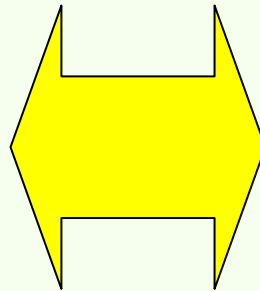
# Infrastructure Required for Impact Investing



# The Need for Social Impact Measurement

## Social Enterprise Needs

- Access to capital
- Investor alignment
- Protection against mission drift / loss of control
- Investors who “value” social impact



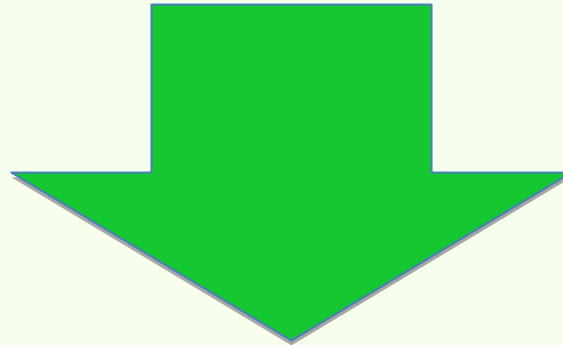
## Impact Investor Needs

- Visibility / ease of search
- Accrediting of Social Enterprises
- Transparent reporting of Social Metrics
- Ideally, social impact measurement

# The Opportunity

Social Enterprises need a new way of accessing investor capital to take their work to scale.

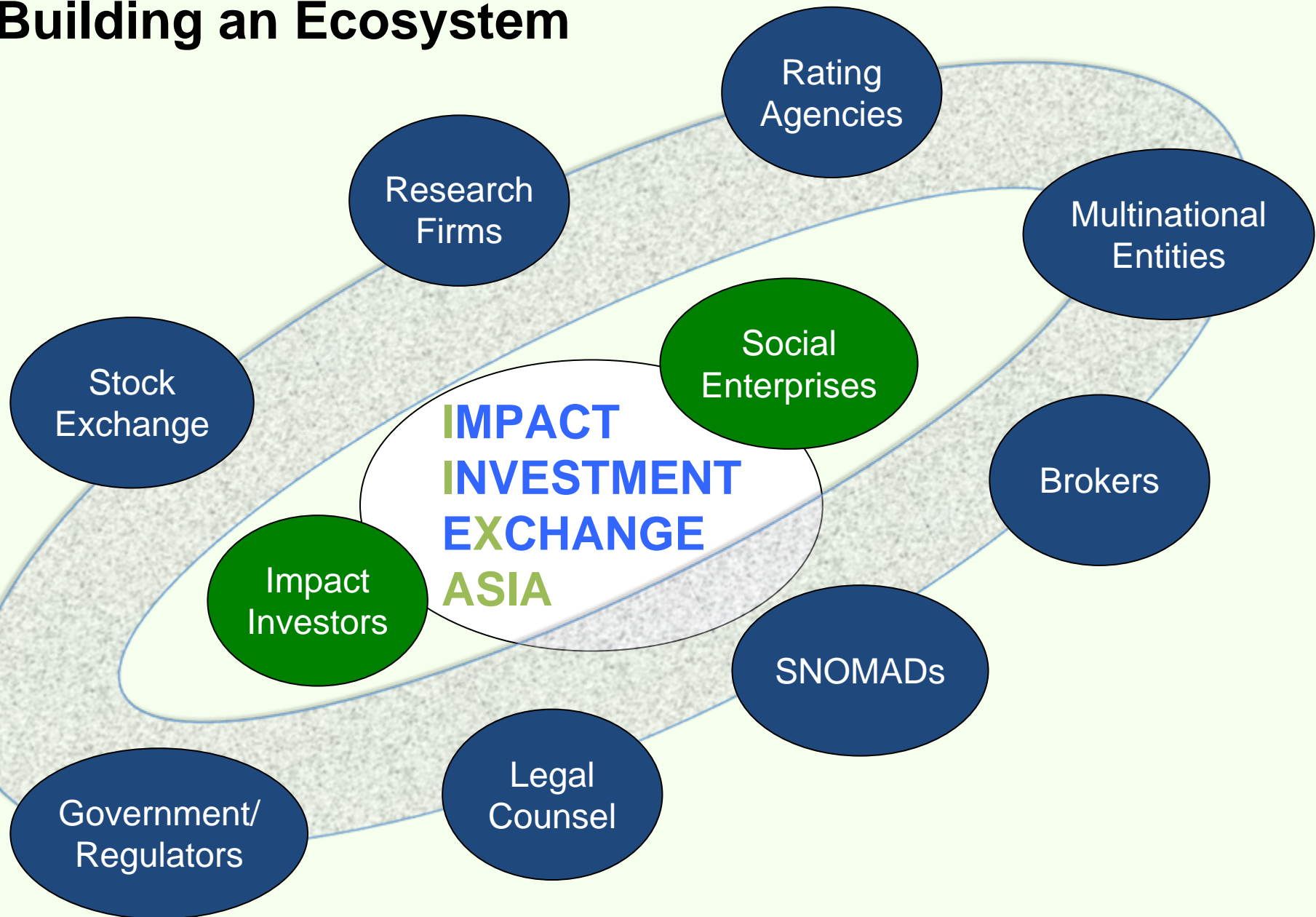
Impact Investors need a new way of accessing economically / socially / environmentally viable and sustainable investments.



**Impact Investment Exchange Asia catalyzes both.**



# Building an Ecosystem



**IMPACT  
INVESTMENT  
EXCHANGE  
ASIA**

**Thank You**