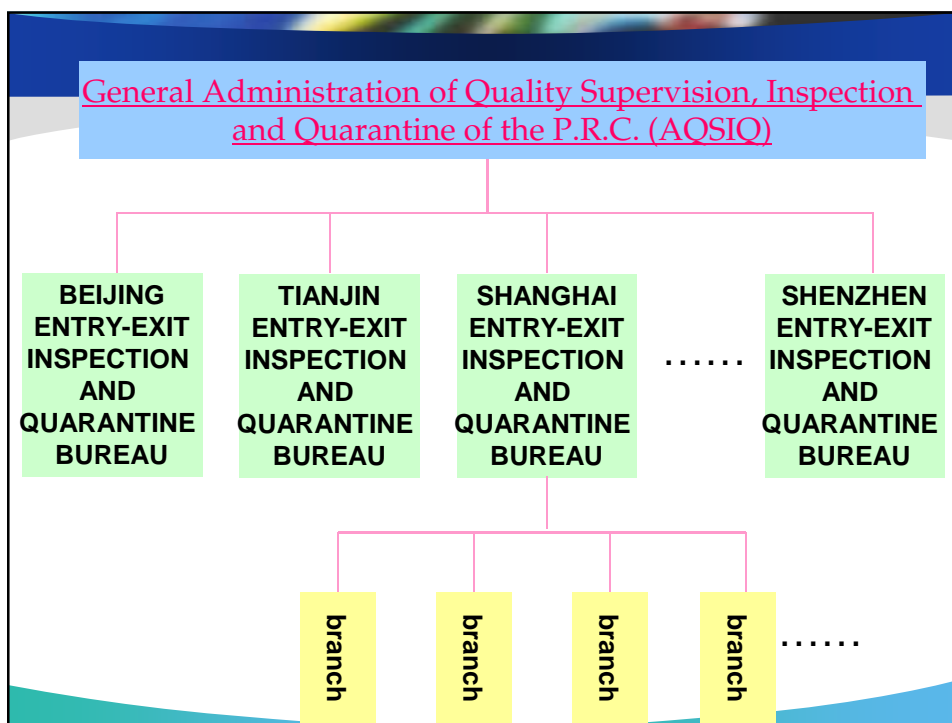


## Contents

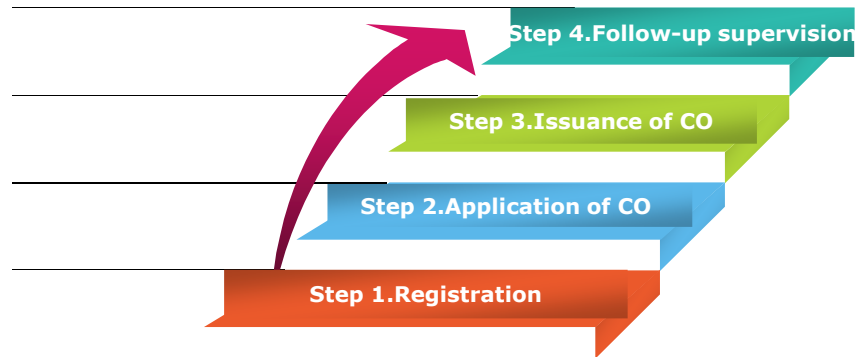
- 1 Current Procedures for Issuing APTA CO
- 2 APTA CO data
- 3 Views on Issuance of Electronic CO

## 1.Current Procedures for Issuing APTA CO

- General Administration of Quality Supervision, Inspection and Quarantine of the P.R.C. (AQSIQ) is in charge of the administration of Issuance of all kinds of Certificates of Origin (CO) in China
- The 35 Entry-Exit Inspection and Quarantine Bureaus (CIQs) under the jurisdiction of AQSIQ, with more than 300 branches and 3,000 issuing officials, are in charge of the issuing CO in different areas.



## 1. Current Procedures for Issuing APTA CO



### Step 1: Registration

1. The enterprises submit the registration application as well as the scanned copy of relevant documents through electronic system to local CIQs. The relevant documents can also be hard copy.
2. The local CIQs will carry out on-the-spot consideration after receiving the application and make a decision.
3. Record keeping. The CIQs will keep the electronic document in file.

## Step 2: CO application

### On-line Application.

➤The enterprises send application data through the electronic system to issuing authority.

➤The system will automatically check the application data to see if there are some mistakes. If it is correct, the data will be further examined by the issuing officials. If wrong, the data will be sent back for revision.

➤The relevant document includes: invoice, packing list, bill of lading etc.

### CO application format

 中华人民共和国出入境检验检疫 原产地证明书申请书							
申请单位 (盖章):		注册号:		证书号码:			
郑重声明:							
本人是被正式授权代表申请单位申请办理原产地证书和签署本申请书的。							
本人所提供原产地证书及所附单据内容正确无误, 如发现弄虚作假, 冒充证书所列货物, 篡改证书, 自愿按照有关规定接受处罚并负法律责任, 现将有关情况申报如下:							
证书种类		最终目的国/地区		中国/地区		出证日期	
贸易方式		商品 FOB 总值 (美元)					
序号	HS 编码	货物名称	进口成份*	生产企业/联系人/电话	数/重量	单位	FOB 值 (美元)
1							
2							
3							
4							
5							
6							
7							
8							
随附单证							
备注:				申报员 (签名):  电话:  日期:      年    月    日			

中华人民共和国国家质量监督检验检疫总局制(2006.10)

\*注: “进口成份”指产品含进口成份的情况, 如不含进口成份, 则填 0%。若含进口成份, 则填进口成份占产品出厂价的百分比。

贸易方式包括: 一般贸易、进料加工贸易、来料加工贸易、外商投资、易货贸易、补偿贸易、边境贸易、展卖贸易、零售贸易、无偿援助、其他贸易方式等。

### Step 3: CO issuance

1. On-line Examination. The issuing official will examine the application as well as the relevant documents to see if the goods is qualified to issue a CO. If no problem, the CO is issued. If problems exist, the official will send the application back to enterprise for revision. On-spot-investigation are selectively carried out according to different situation. Hard copy of relevant documents are sometimes required to be submitted during the process of examination.

2. CO issued. The relevant data on line will be printed on a blanked APTA CO. And then signed and stamped. The relevant electronic data and hard copy are retained according to relevant provisions stipulated in the Operational Procedures for certification of APTA Certificate of Origin.

In a word, all procedures except signature and stamp for issuing a APTA CO are done electronically in China.

3. Charge. The applicant was being charged 35 RMB for a non-preferential CO, and 40 RMB for a preferential CO, including APTA CO. At present, there is no charge for issuing COs since August 1<sup>st</sup>, 2013 according to relevant national requirement.

4. Time. According to our domestic laws and regulations, a CO shall be issued within 2 working days upon receipt of the application. However, if on-the-spot investigation is needed, the time is not limited to 2 days. In real practice, our issuing authority usually issues a CO within 1 day.

#### Step 4: Follow-up supervision

**1.penalty.** For those non-compliance behaviors, the enterprises will be penalized according to relevant domestic laws and regulations.

**2.verification.** For those verification request from the importing countries, the issuing authority will conduct investigations and reply within the period stipulated by the APTA. Since 2011, the INTERNATIONAL E-VERIFICATION SYSTEM FOR CERTIFICATE OF ORIGIN has been run on the internet.

#### 2. APTA CO data

	No. of APTA CoO issued	Total FOB value of exports	No. of cases where a request for verification was made
2009	136,047	\$4,574,000,000	0
2010	191,224	\$6,472,000,000	7
2011	198,597	\$7,790,000,000	0
2012	198,003	\$7,058,000,000	2

