



# CAPACITY BUILDING WORKSHOP on FACILITATION of INTERNATIONAL RAILWAY TRANSPORT

(18-19.12.2018, Bangkok)

**UTLC**

Eurasian  
Rail Alliance

#ENJOYTHERAIL



# TRANSIT SERVICES AND BORDER TERMINALS



- **Dostyk/Altynkol - Brest**
- **Dostyk/Altynkol – Bruzghi**  
operates since July 2017
- **Dostyk/Altynkol - Kaliningrad**  
operates since September 2017
- **Dostyk/Altynkol - Svislach**  
operates since March 2018

# EURASIAN RAIL TRANSIT CORRIDOR'S GROWTH POINTS

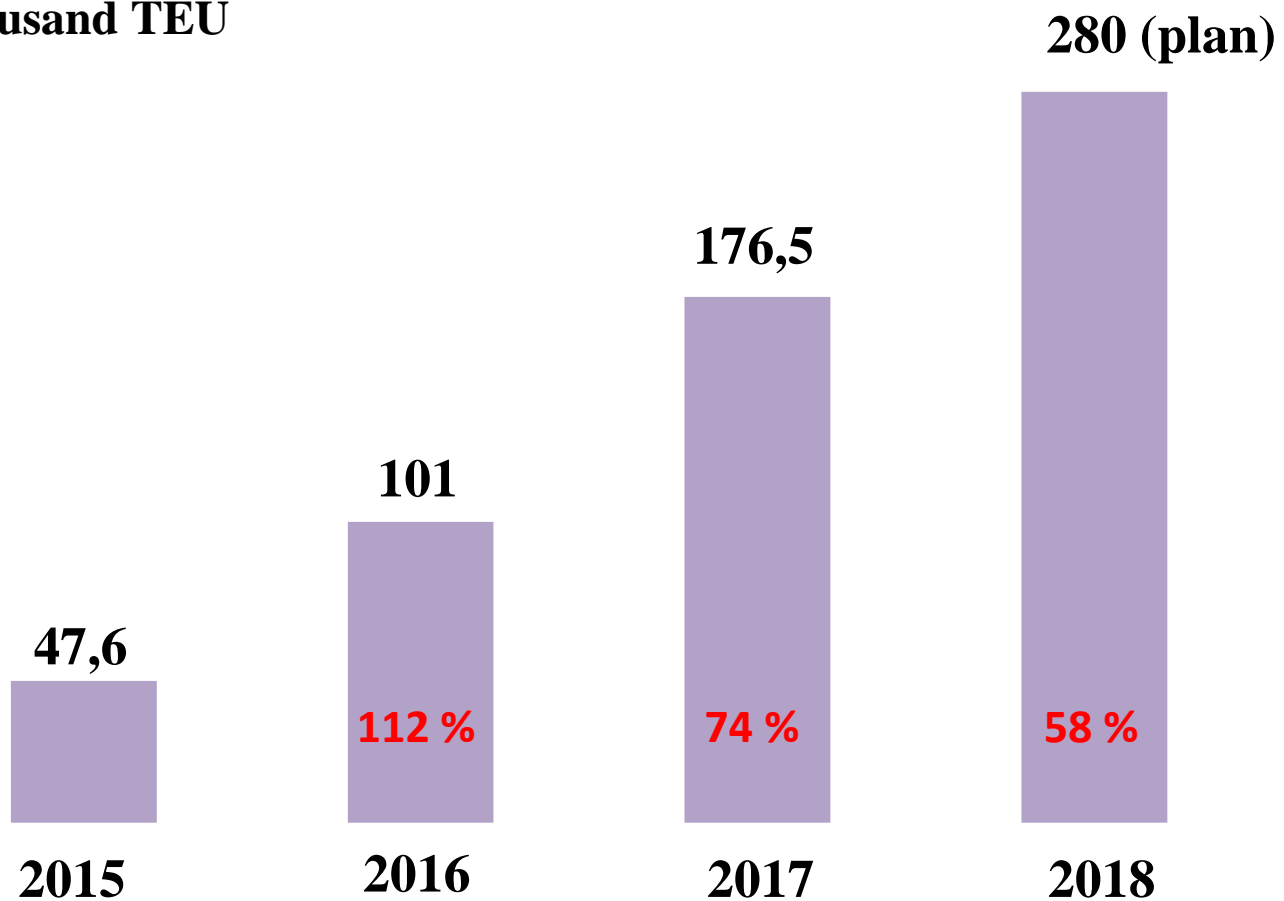


- **1150 km/day**
- **5430 km**
- **5,5 days**

Eurasian railway corridor is the most dynamically developing corridor of the «New Economic Silk Road»

# DYNAMICS OF VOLUME OF TRANSPORTATION

Thousand TEU



- 2102 container trains in 2017
- 3300 container trains in 2018 (plan)

# NEW MULTIMODAL SERVICES

	Kaliningrad «Dry»	Kaliningrad «MM»
Max frequency of trains per day	16	8
Max capacity, TEU per year	450 000	300 000

**Transit time from Kaliningrad sea port:**

Trelleborg

Rostock

Hamburg

**Rail distance from station Braniewo to:**

Lodz

Berlin

Duisburg

16  
hours

20  
hours

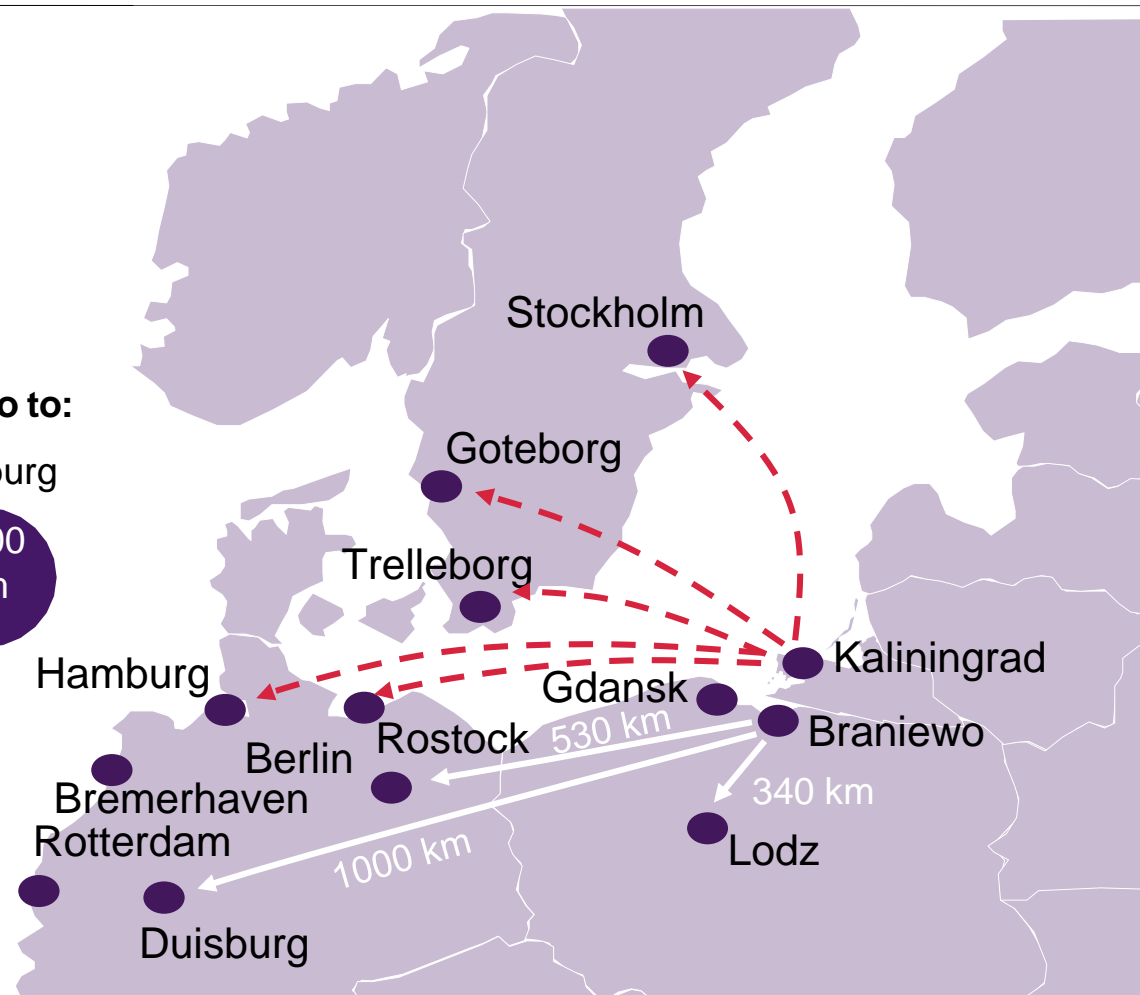
36  
hours

320  
km

530  
km

1000  
km

November 2, 2018 from the port of Kaliningrad through the station Dostyk to Chengdu JSC UTLC ERA sent two trains, which arrived by sea from Rotterdam, in the frame of multimodal transportation project.



# WHAT we SHOULD DO

---

- ✓ Application of CIM/SMGS consignment note in Eurasian traffic
- ✓ Implementation of measures for the transition to e-CIM/SMGS and the introduction of paperless technologies
- ✓ Formation of transit-oriented customs legislation
- ✓ Coordination of efforts of customs services of neighboring countries to simplify customs and other formalities at the border
- ✓ Development of legislation for multimodal transport

# ERAI – RAILWAY TRANSIT PRICE INDEX 1520 [WWW.INDEX1520.COM](http://WWW.INDEX1520.COM)

Reflects the average cost of transporting 40' container along Eurasian rail transit corridor China – Europe by infrastructure at 1520 mm of Kazakhstan, Russia and Belarus



## Functionality:

- 1** Accessibility, transparency, competitiveness
- 2** Opportunity to plan logistic expenses
- 3** Obtaining a prompt information about the current rate of ERAI

**ERAI** - index of:  
Eurasian Rail Alliance Index

- connectivity
- partnership
- cooperation

# TO RAIL OR NOT TO RAIL?

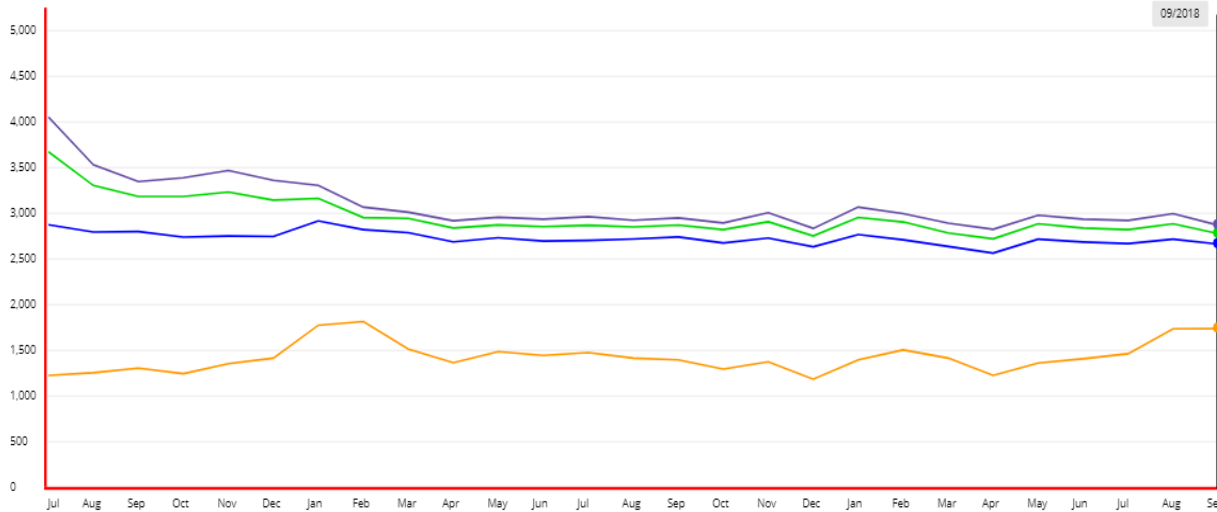
ERA I  
Eurasian Rail Alliance Index

2,783.00 USD -107 -3.70% ▼

1 Year 2 Years 3 Years 4 Years 5 Years

ERA I Composite Index ERA I U-East ERA I U-West WCI Drewry Freight turnover (x10)

Transit time  
5,5 days



ERA I U-East  
2,667.00 USD -55 -2.02% ▼

ERA I U-West  
2,875.00 USD -127 -4.23% ▼

WCI Drewry  
1,743.00 USD +3 +0.17% ▲

Freight turnover (x10)  
27,680 TEU -470 -1.67% ▼

## Main parameters of the index

### Index measurement unit

USD/FEU

### Routes

Dostyk/Altynkol -  
Brest/Bruzhi/Svislach/Kaliningrad

### Index operator

JSC UTLC ERA

### Update period

Monthly

### Transit time

5,5 days  
target for 2025 - 3,5 days

### Average travelling speed

930 - 1 020 km/day,  
target for 2020 - 1 500 km/day

### Update procedure

Analytics publication in English,  
Russian and Chinese



**UTLC**

Eurasian  
Rail Alliance

**#ENJOYTHERAIL**