



## NEMO Geoportal

This is geospatial data sharing platform for Disaster Risk Reduction from National Emergency Management Office (NEMO), Tonga. Various types data including geospatial data, documents, etc. can be easily access, visualized, download using this platform.

Data Providers : Click Here



### Layers

Explore data layers and download in standard data formats



### Maps

Explore maps generated by aggregating and styling data layers. Get more insight in to the data



### Documents

Explore published documents and download in standard document formats

## Explore Layers

Upload Layers

Cart

Add resources through the 'Add to cart' buttons.

Set Permissions Create a map

Filters Clear

TEXT

Search by text

TYPE

Raster 3

Vector 13

CATEGORIES

KEYWORDS

OWNERS

DATE

REGIONS

EXTENT

Total: 21



SOCIETY

#### Percentage of Population aged between 0 to 4 years old

This layer represents percentage of population aged 0 to 4 years old in each of Tonga's districts.

nemo 15 Jun 2017 8 0 0 Create a Map



#### DEM of Tonga (SRTM) - 90m Spatial Resolution

This digital elevation model is developed from Shuttle Radar Topography Mission (SRTM). Spatial Resolution is 90m per pixel.

nemo 12 Jun 2017 16 0 0 Create a Map

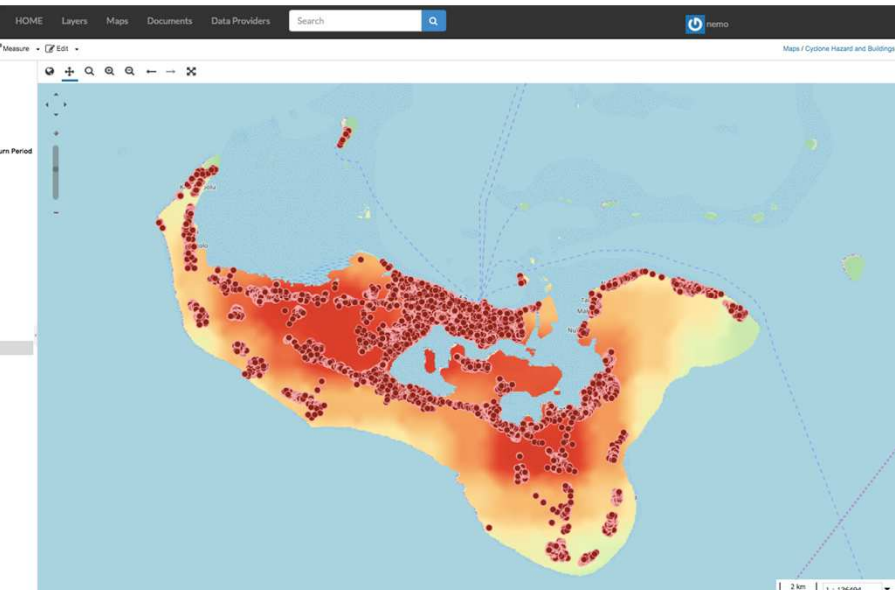
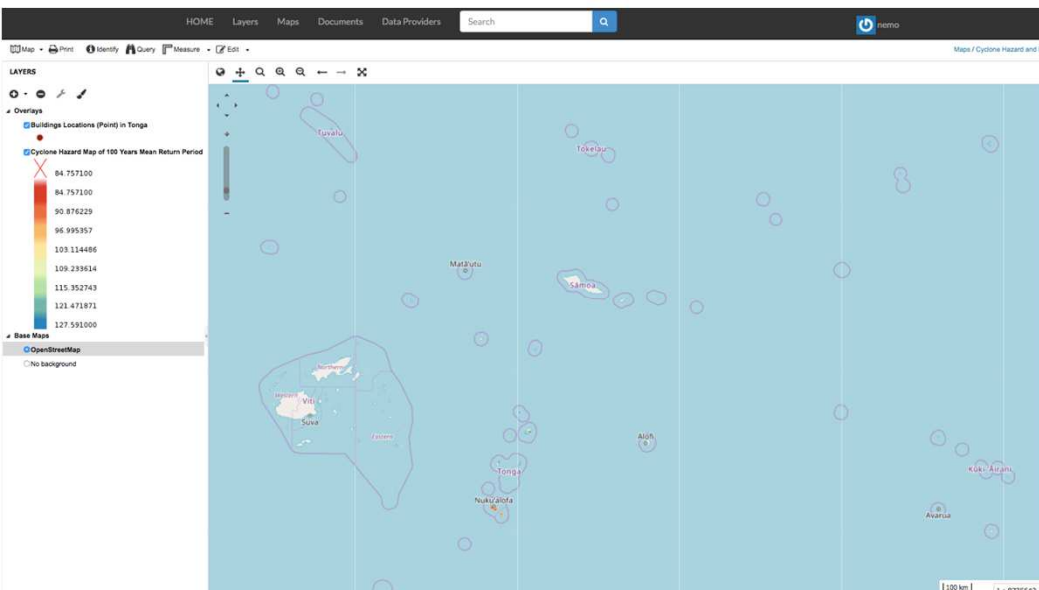


SOCIETY

#### District-wise Percentage Households of Piped Drinking Water

Layer shows source of piped drinking water as a percentage of households per district. Additionally, layer contains actual total number of households per district.

nemo 12 Jun 2017 1 0 0 Create a Map



GeoNode

DataMapsAbout

Search

Sign in

# NEMO - Cyclone Gita Geoportal

This is a spatial data repository for all data related to Tropical Cyclone Gita that hit Tonga in 2018. If you have any questions about the data, please [contact us](#).

Access the data >

## Search for Data.

Search

Advanced Search

### Featured Datasets



KoBoToolbox

Damage Assessment Form

3338 submissions

Form Preview

Damage Assessment Form

Date

yyyy-mm-dd

Name of Village

Name of Affected House Hold

Owner of the Building

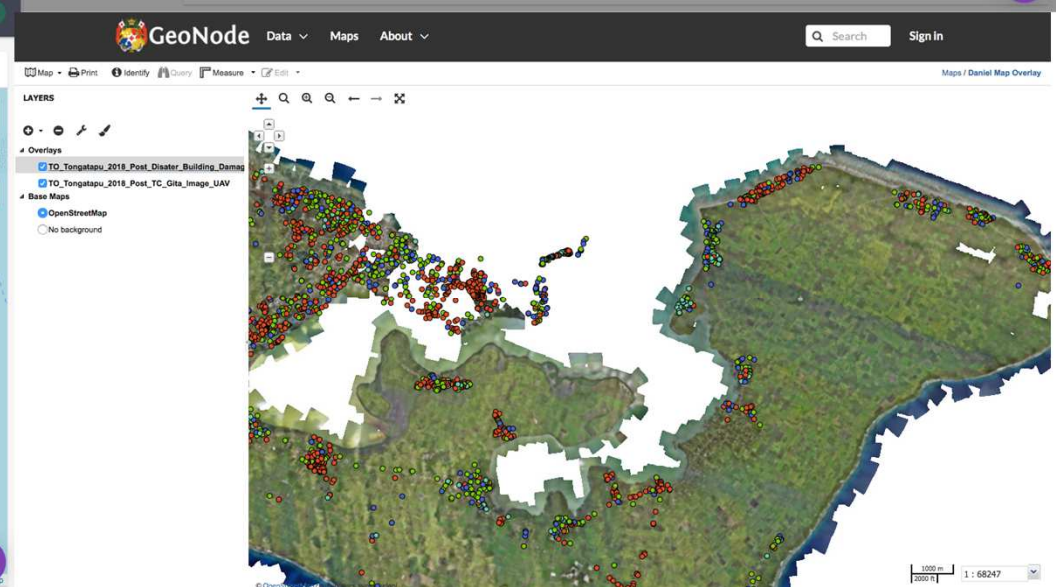
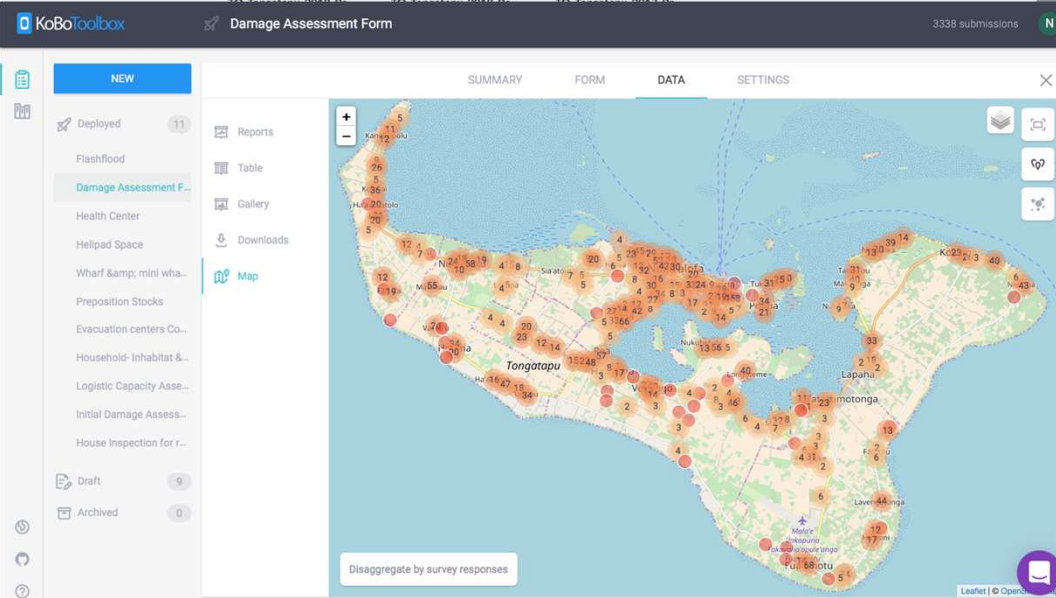
☐ Yes

☐ No


Level of Damage

☐ 1

☐ 2







3.0.2  
2.18.19 LTR

[DISCOVER QGIS](#)
[FOR USERS](#)
[GET INVOLVED](#)
[DOCUMENTATION](#)


Download for Windows

Download for Mac OS X

Latest release (richest on features):

Mac Installer Package for macOS Yosemite (10.10) and newer.

Installation instructions are in the Read Me on the disk image. This package uses the [python.org Python 3.6](#) - other distributions are not supported. Install packages in the numbered order.




QGIS macOS Installer Version 3.0

Long term release (most stable):

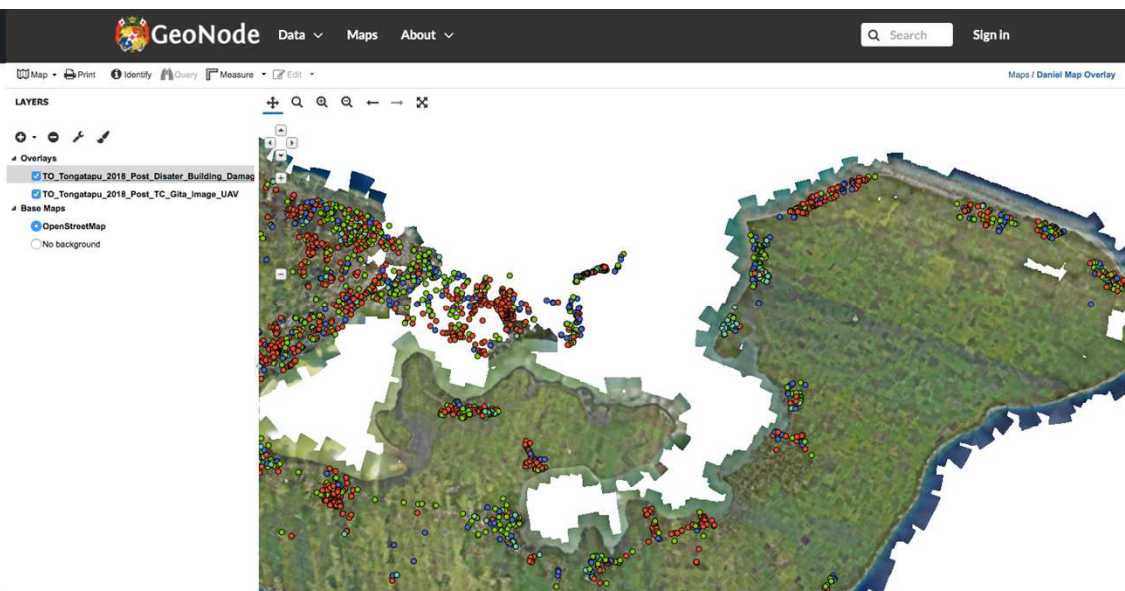
Mac Installer Package for OS X Mountain Lion (10.8) and newer.

Installation instructions are in the Read Me on the disk image. This package uses the system Python 2.7 - other distributions are not supported. It also requires the NumPy and Matplotlib packages on the disk image. Install packages in the numbered order. If an older major version is being upgraded (2.16 or older), delete QGIS.app from your Applications folder before installing this version.



QGIS OS X Installer Version 2.18

Download for Linux



PIE

PIE-Map

PIE-Integrator

PIE-DXP

PIE-Globe

PIE-UAV

PIE-Cloud

软件下载



航天宏图

扫描二维码 关注我们

公司新闻 行业动态 管理视野

招贤纳士

航天宏图邀请您进入》

无人机低空信息处理平台PIE-UAV

1. 产品简介

PIE-UAV是航天宏图专门针对无人机低空遥感自主研发的，集无人机影像处理和无人机视频处理为一体的综合平台系统。它提供从数据输入到产品生成的一体化解决方案，具备对飞行时获取的影像和视频进行快速处理的功能。它采用并行处理机制，大幅提高了软件运行效率，能很好地适应无人机海量数据的处理要求；采用插件架构，具有高度的灵活性和可扩展性。PIE-UAV可广泛用于灾害应急救援、国土资源调查、水资源及环境监测、森林防火、战场评估、数字城市建设等领域。



2. 无人机影像处理模块

2.1. 模块概述

无人机影像处理模块可对任何无人飞行器、任何传感器设备获取的航拍影像进行拼接处理，具备数字正射影像图（DOM）、数字高程模型（DEM）、三维景观的生产能力；在无特征/弱特征区域（如沙漠、绿色植被、水域



GeoNode

[Data](#)
[Maps](#)
[About](#)

[Sign in](#)

Map
Print
Identify
Query
Measure
Edit

Layers

