

ESCAP, 6-7 Nov. 2015, United Nations University  
Sharing Knowledge and Experiences Toward Sustainable Ageing Societies in  
North-East Asia:  
The 1<sup>st</sup> Meeting of the North-East Asian Forum on Population Ageing

# Towards Integrated Community Care System in Fukuoka-city, Japan

Takeo Ogawa, Ph.D.

President

Asian Aging Business Center (NPO)



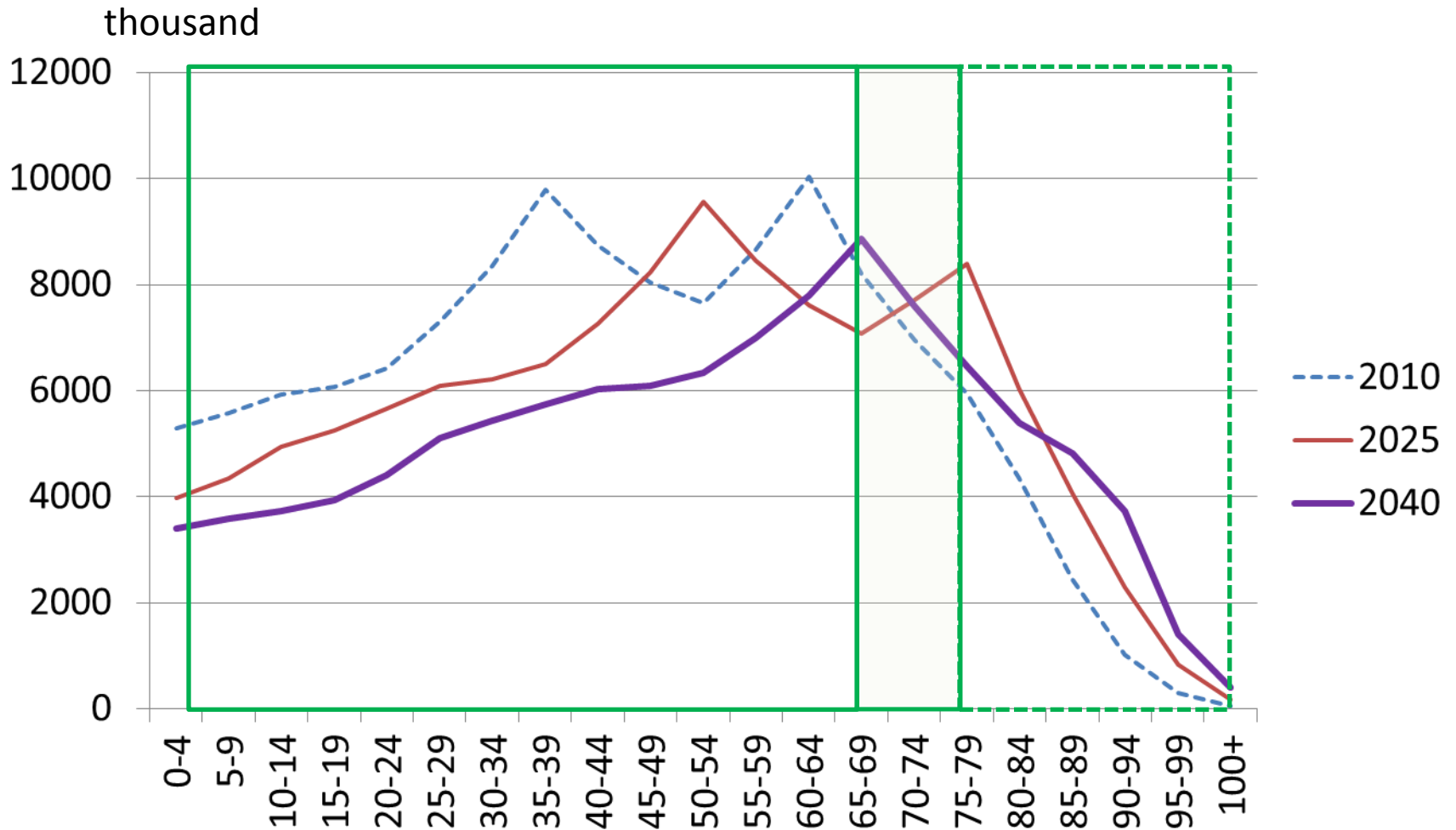
# Contents

1. Japanese Long-term Care System in Demographic Transition
2. Municipality's Prospects: Case of Fukuoka-city
3. Reorganization of Medical and Long-term Care into the Integrated Community Care System: Case of Fukuoka-city
4. Capacity Building of Care Workers for the Integrated Community Care System

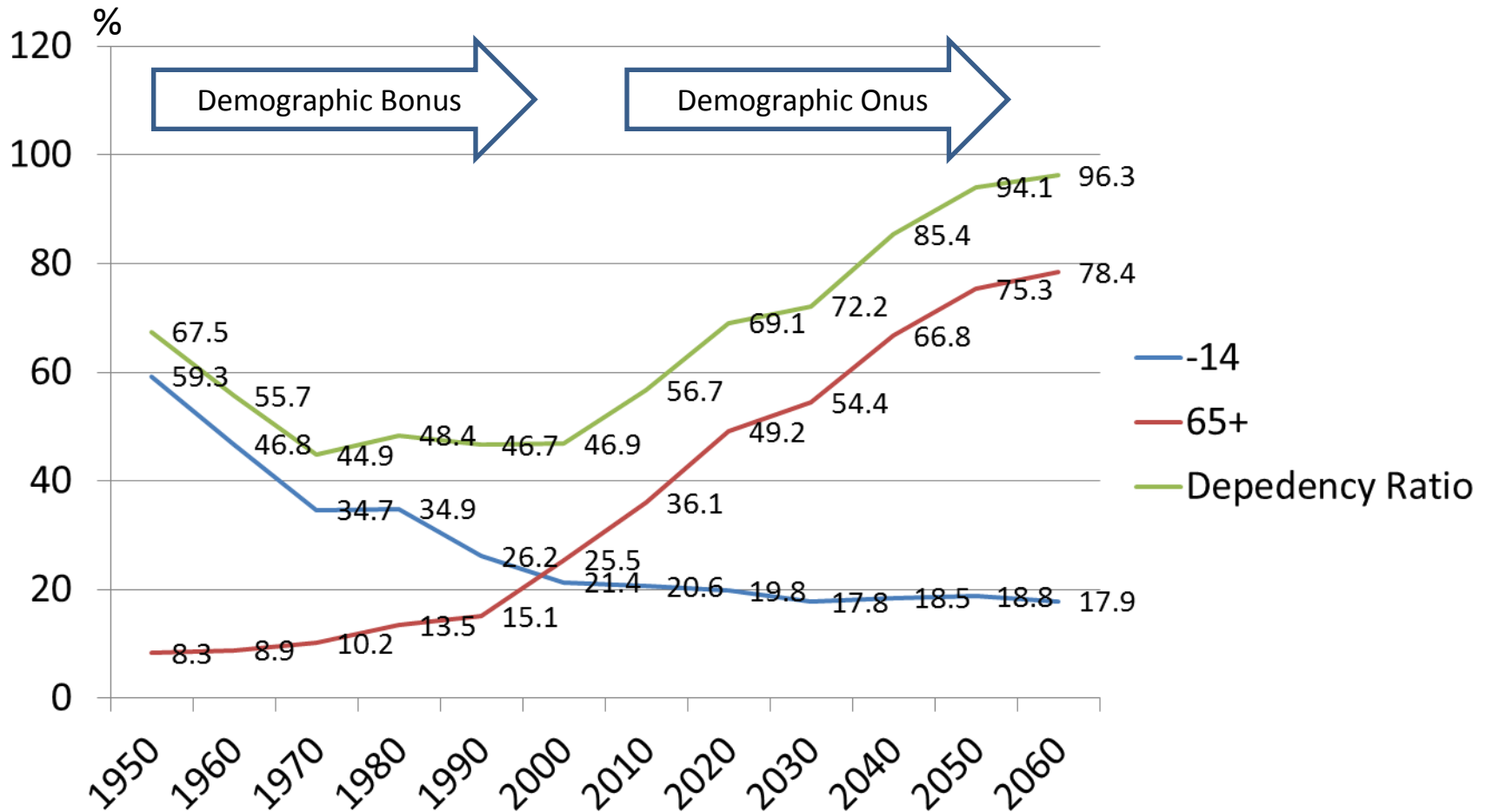
孝  
介護・看護  
療養保護  
老年護理  
長期照護

# **1. JAPANESE LONG-TERM CARE SYSTEM IN DEMOGRAPHIC TRANSITION**

# Japanese Age-Population Change



# Demographic Transition in Japan (Change of Dependency Ratio)



National Institute of Population and Social Security Research. 2012.  
Population Projection for Japan: 2011-2060

# Status Quo of LTC in Japan

- Decentralized Social Insurance System  
Public Long-term Care Insurance System is based on national & local governmental budget, premium by aged 40-64 (Health Insurance), and premium by aged 65+ (Pension).
- De-hospitalization  
Japanese LTC is differentiated from the medical cure and the nursing care. Japanese LTC has its own domain.

# Regional Disparities of Medical/LTC Services

Yasushi Takahashi, 2015

[http://www.policycouncil.jp/pdf/prop04/prop04\\_3\\_150702.pdf](http://www.policycouncil.jp/pdf/prop04/prop04_3_150702.pdf)

		Acute Hospitals						
		1 Poor	2	3	4 Average	5	6	7 Abundant
LTC Facilities	1 Poor					Tokyo Central		
	2	Nemuro Depopulated					Fukuoka Wide Area	
	3							
	4 Average				Oume Suburb			
	5	Tokyo Island						Omuta Local City
	6							Beppu Local City
	7 Abundant				Miyoshi Depopulated			

- National Qualification of Service Providers and LTC workers

Socialization of LTC from homework to quasi-Labor market. Various service providers including private corporations and non-profit organizations.

Qualification of certified care workers.

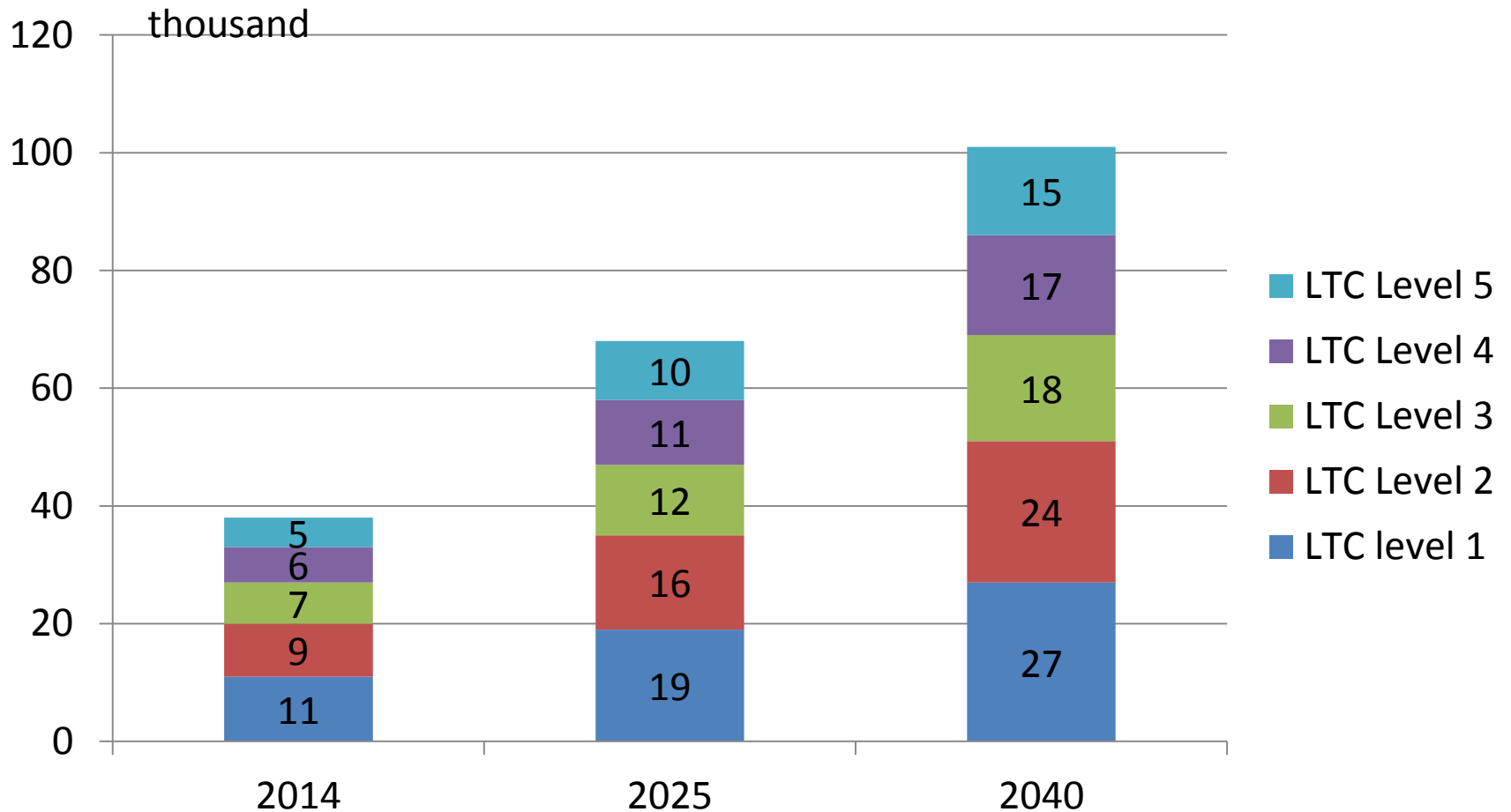
- How can we sustain the public long-term care system in a demographic onus era.





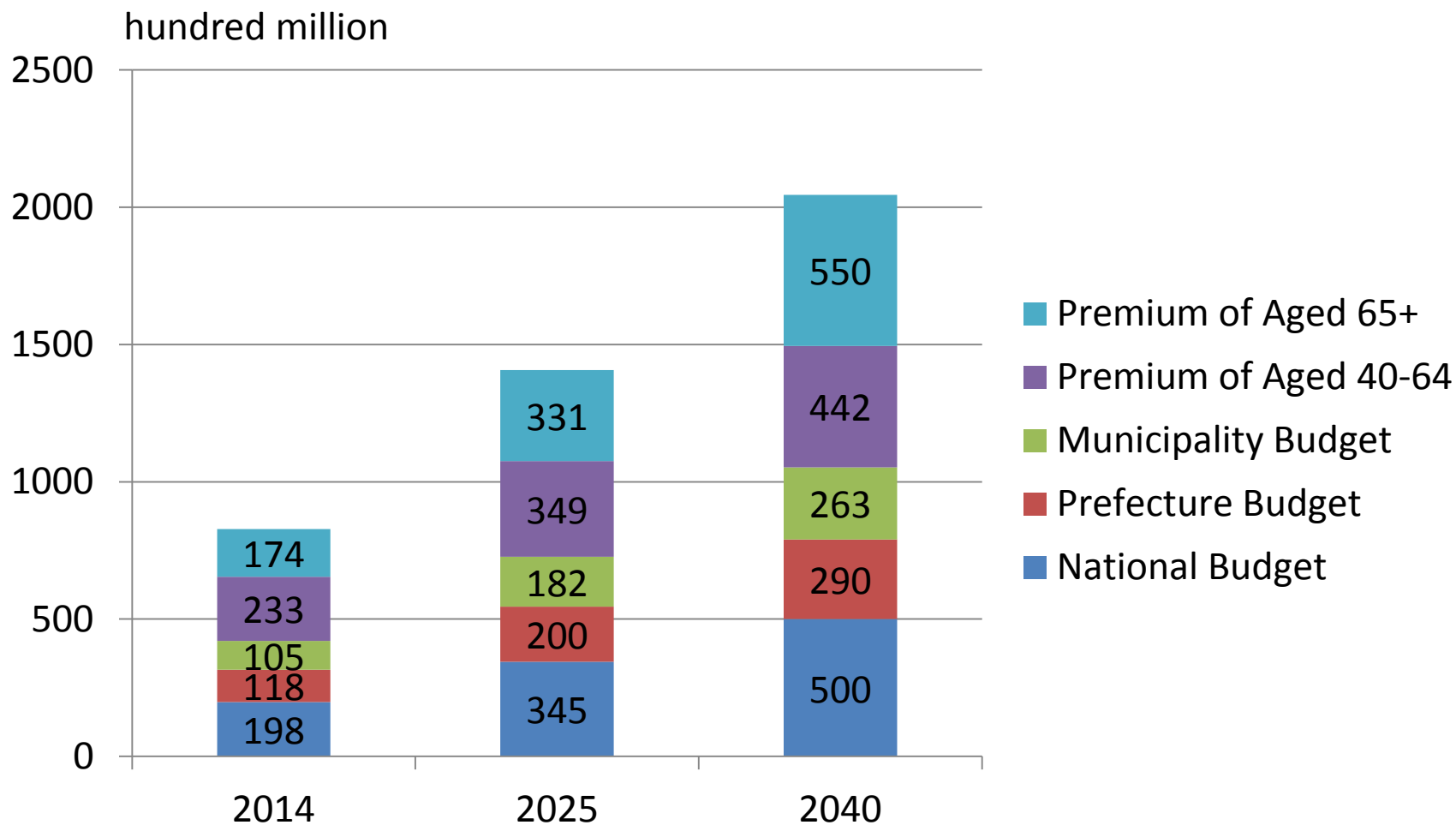
## **2. MUNICIPALITY'S PROSPECTS: CASE OF FUKUOKA-CITY**

# Estimated LTC-recognized Elderly



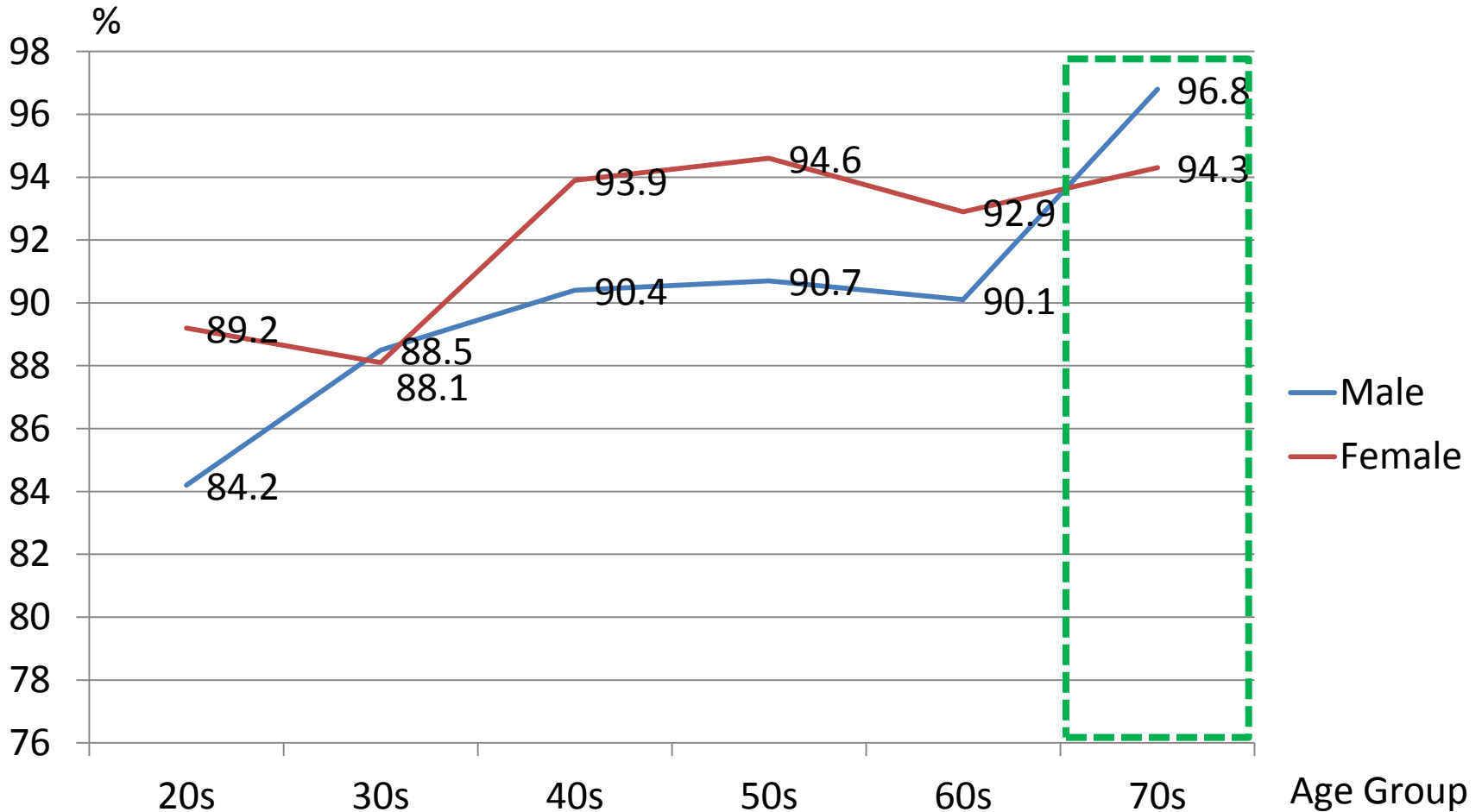
Fukuoka-city, 2014. A Comprehensive Vision of Health and Welfare for the Elderly

# Estimated LTC Budget of Fukuoka-city



Fukuoka-city, 2014. A Comprehensive Vision of Health and Welfare for the Elderly

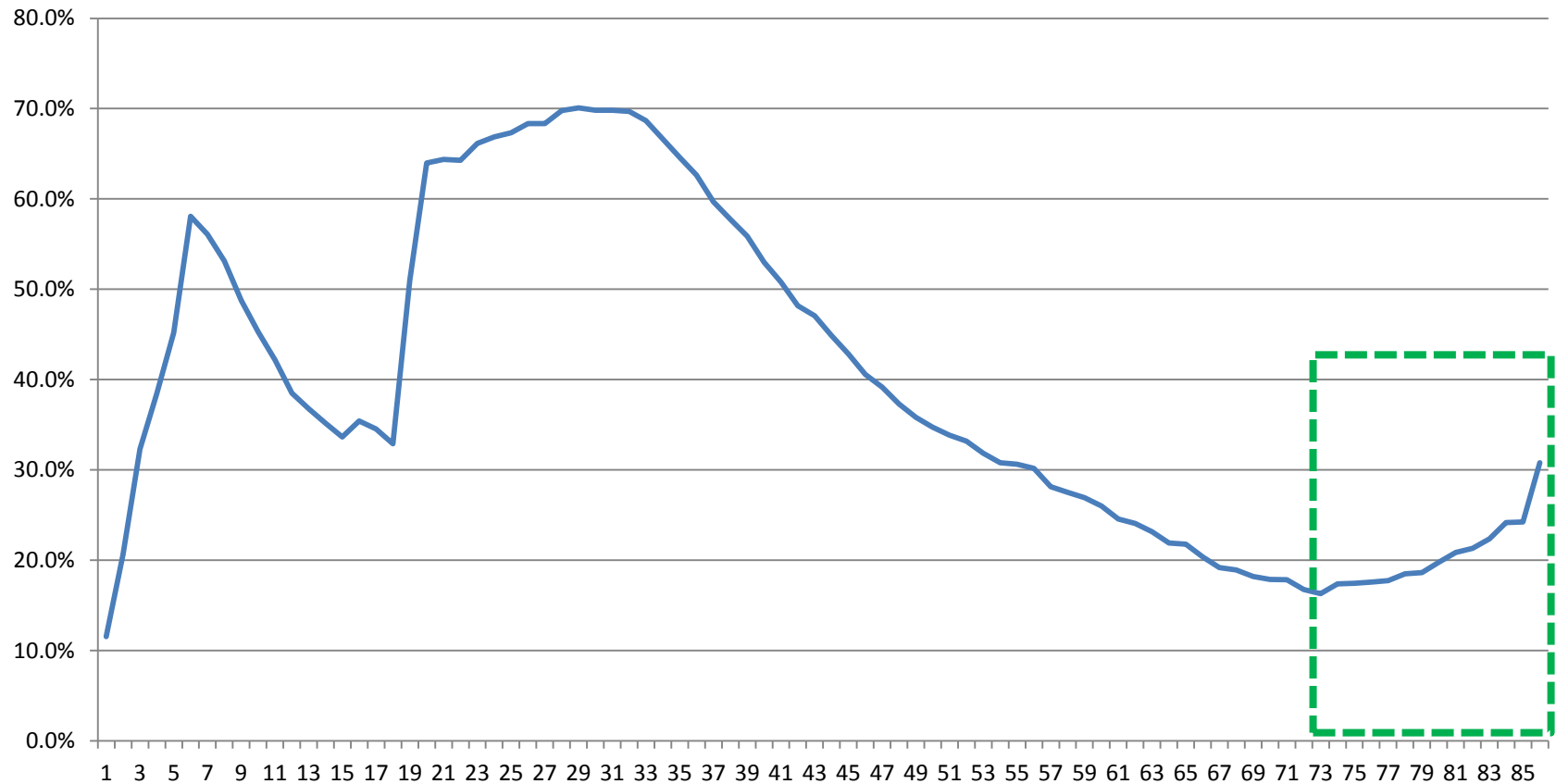
# The Citizen's Will of Stable Settlement



Fukuoka-city, 2014. Opinion Poll for Municipality

# Migration Rate in Fukuoka-city

## Ageing in Place?

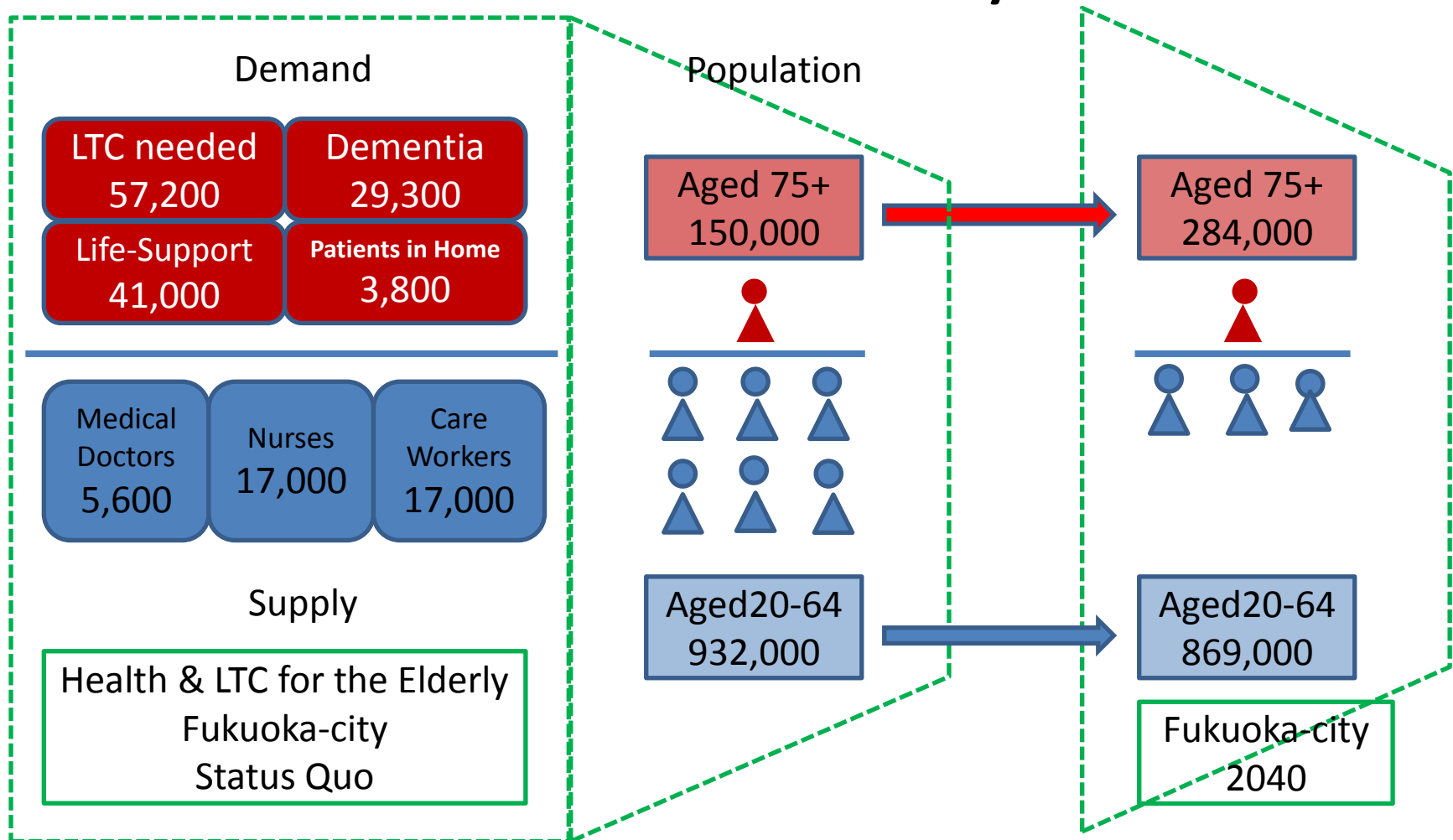


Census, 2010. Fukuoka-city.

# Status Quo of LTC in Fukuoka-city

- Residential Care Facilities 75
- Community-based Multi-Functional Small-size Facilities 24
- Community-based Day Care Services 506
- Community-based Visiting Services 723
- Population 1,500,000
- Aged 65+ 297,000
- Recognized LTC 38,000

# Service Demand-Supply Balance in Fukuoka-city

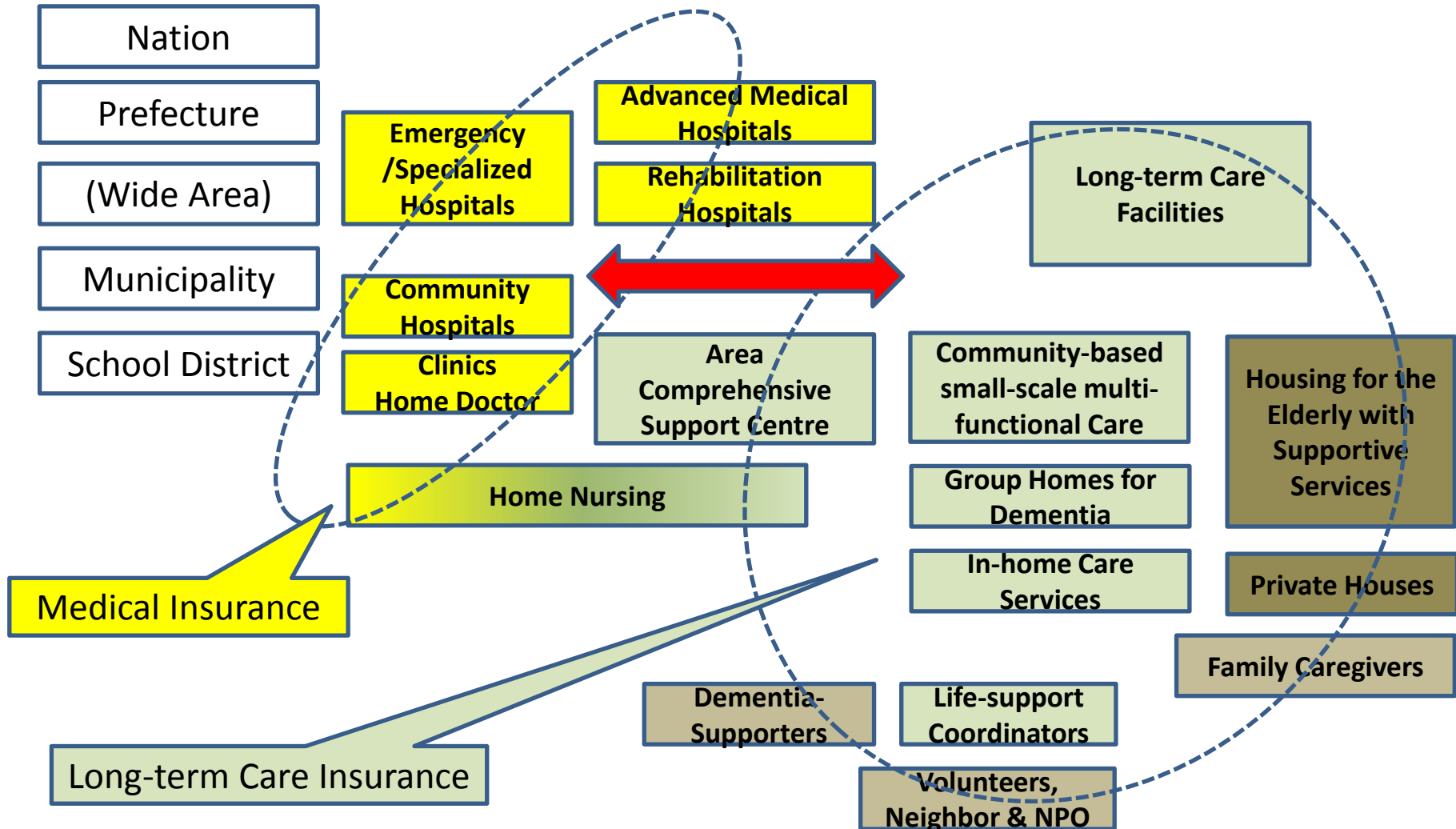




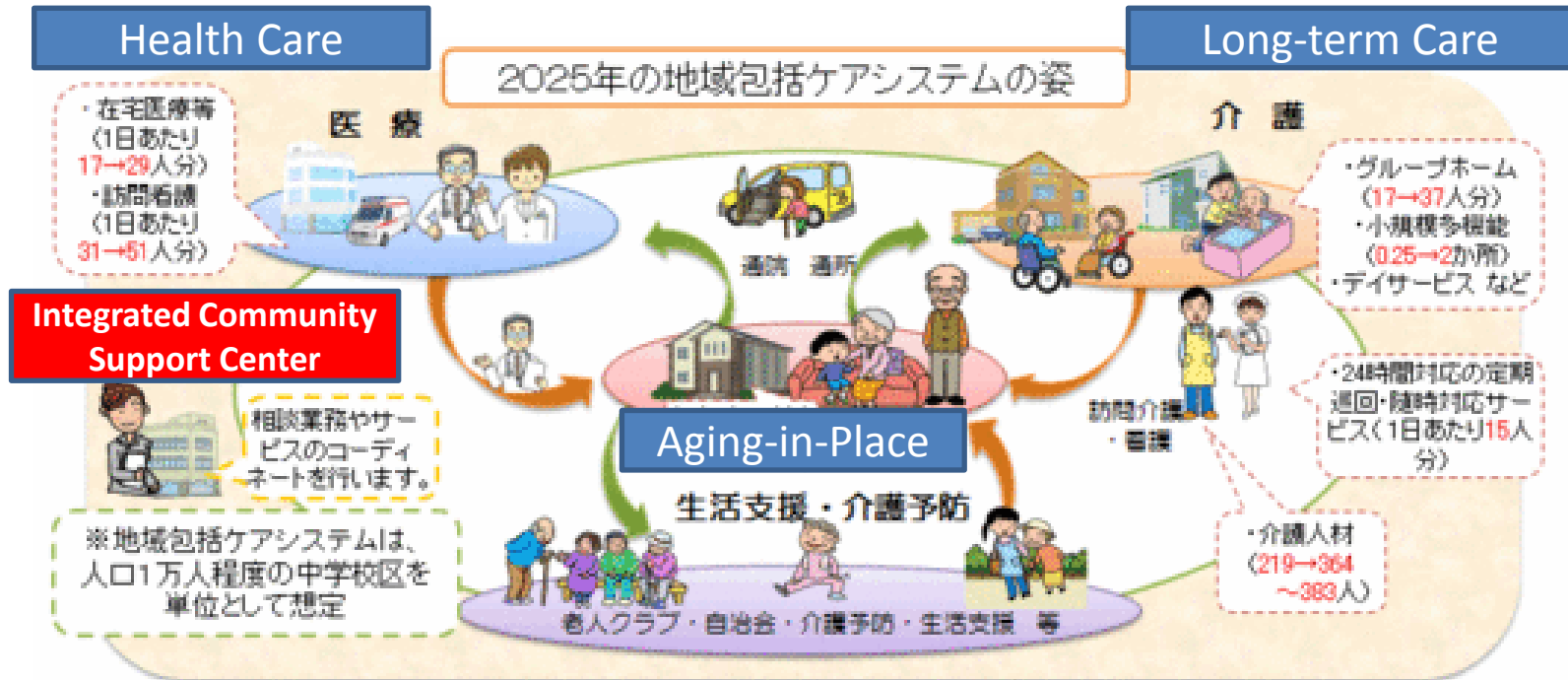
### **3. REORGANIZATION OF MEDICAL AND LONG-TERM CARE INTO THE INTEGRATED COMMUNITY CARE SYSTEM: CASE OF FUKUOKA-CITY**



# Integrated Community Care System



# Aging in Place Integrated Community Care System



※数値は、現状は2011年、目標は2025年のもので、人口1万人の場合 0

Life-Support & Preventive Care

# Fukuoka-city

## Challenging Strategies for 2040

1. Mind Set! Citizen's Awareness  
Orienting preventive care & health promotion  
Community involvement
2. System transform! Reconstruction of service providing system  
Securing "Ageing in Place!"
3. Town Design! Urban planning for hyper aged society  
Constructing age-friendly city!  
Enhancing active ageing

# 1. Mind Set!

- Enhancing 4 dimensions of independent citizen
- Health: Prolonging healthy life expectancy  
Preventive long-term care
- Latter Life: Self-management of health, One who should be helped well
- Income: Not only depend on pension and social security but also gain wage/income/interest.
- Decision of the end of life: Living will.

# 1 Mind Set!

- Sharing:  
From “Live alone” to community involvement  
Community café  
Social participation

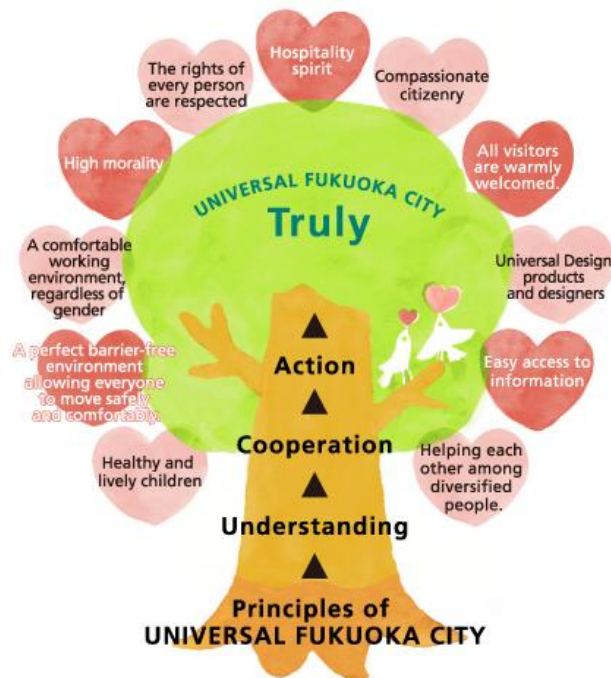


## 2. System Transform

- Combining between the health care and the long-term care into an Integrated community care system  
Harmonizing formal care and informal care  
Social inclusion
- Applying Information & Communication Technologies, and Robotics  
Disclosing big data

# 3. Town Design

- Global action:  
Constructing an active ageing city Fukuoka  
Capacity building of international care workers





## **4. CAPACITY BUILDING OF CARE WORKERS FOR THE INTEGRATED COMMUNITY CARE SYSTEM**



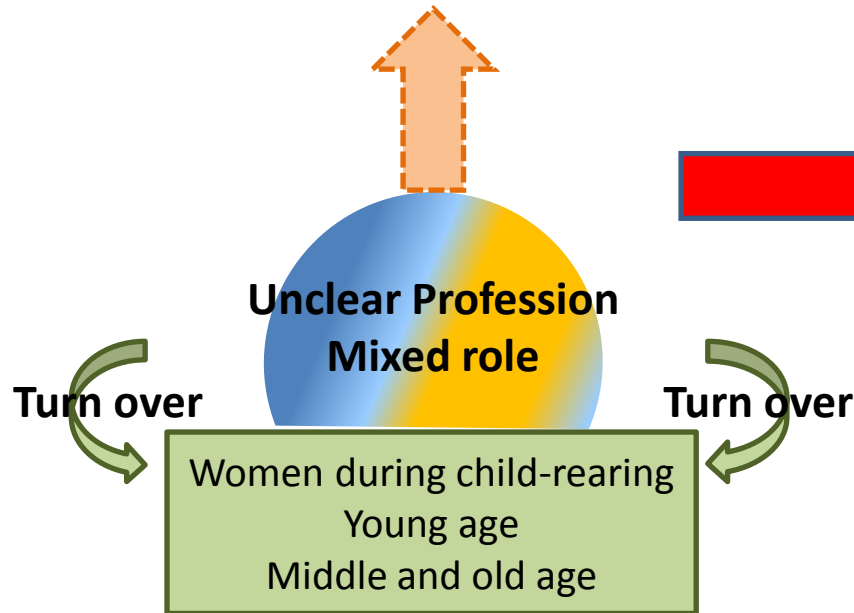
# Estimated Volume of Health and Long-term Care Services in 2025

	2011	2025
Beds in Hospitals, Average Hospitalization Period	1,070,000 Beds 19~20 days	High Acute 220,000beds 15~16 days Middle Acute 460,000 beds 9days Low Acute 350,000 60days
Medical Doctors	290,000	320,000~340,000
Nurses	1,410,000	1,950,000~2,050,000
Clients of LTC	4,260,000	6,410,000
In-home Care	3,040,000	4,490,000
Community-based Care	310,000	610,000
Long-term care Facilities	Nursing Home 480,000 老健440,000	特養720,000 老健590,000
LTC staffs	1,400,000	2,320,000~2,440,000
Visiting Nurse (/day)	280,000	490,000

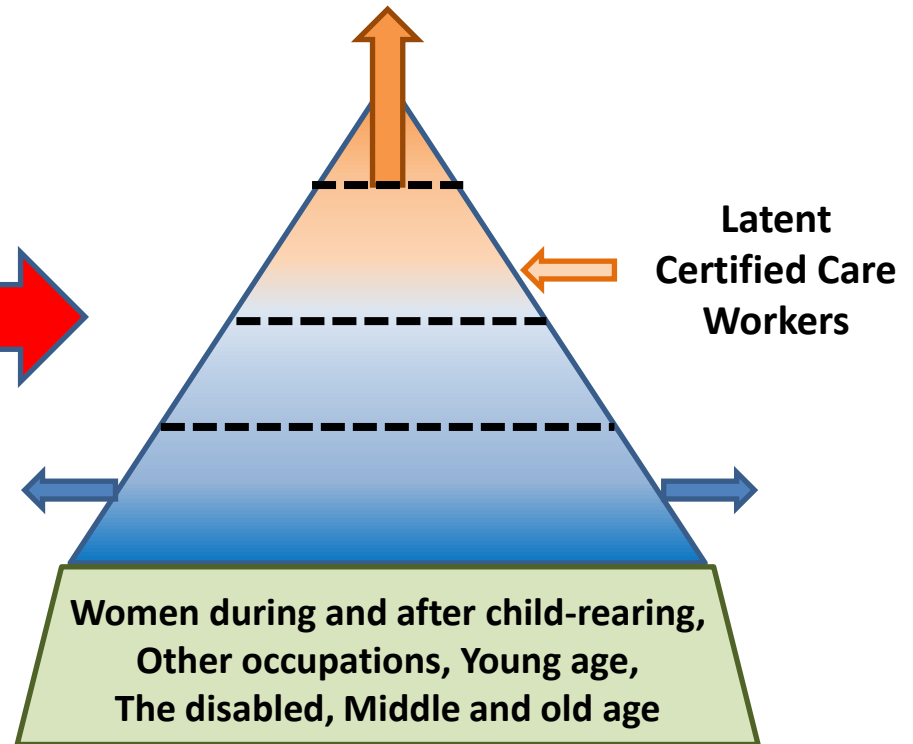
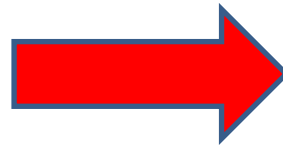
Japan Cabinet,2011. Integrated Reform of Social Security and Tax

# Structural Transformation of Long-term Care Workforce

Little Future Outlook  
Impenetrable Career Path



Status quo



Ideal Structure in 2015

Enhancing Entry to Care Work

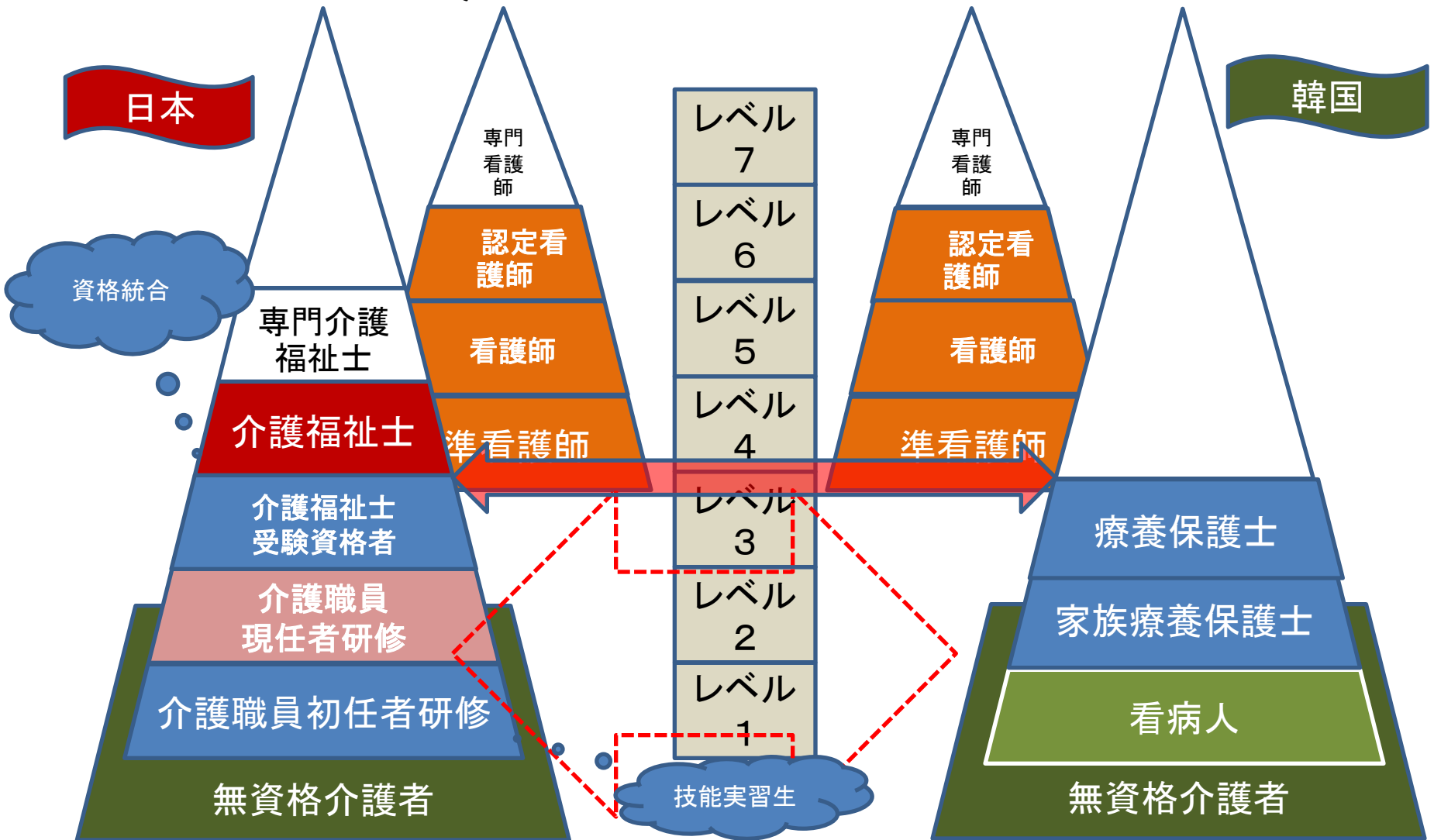
Improvement of Working Conditions

Quality improvement

# Japanese Qualification Framework of Long-term Care Competency



# International Harmonization of Qualification of LTC



# Brain Circulation

- Win-win-win through capacity development



# International Training Centre for Long-term Care for the Elderly

- Living Lab for LTC
- Information Platform
- Developing Programs for Training of Trainers
- Comparative Researches of Long-term Care on Multi-cultural Contexts
- Evaluation Research and Consulting
- Collaboration Approaches to Ageing Communities