

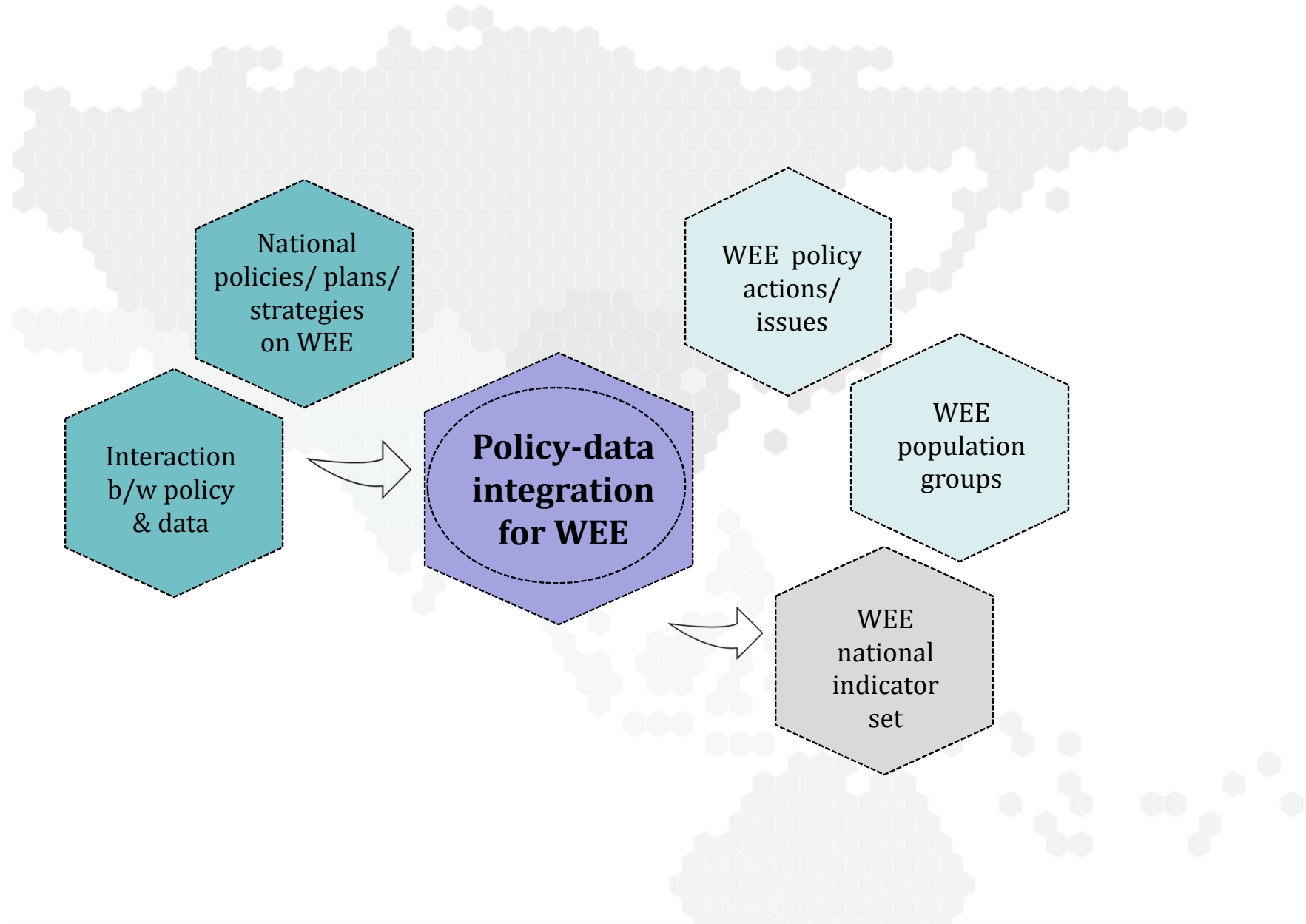
National Workshop on Gender Policy-Data Integration in the context of
Women's Economic Empowerment in the Philippines

1 -3 August 2018, Manila

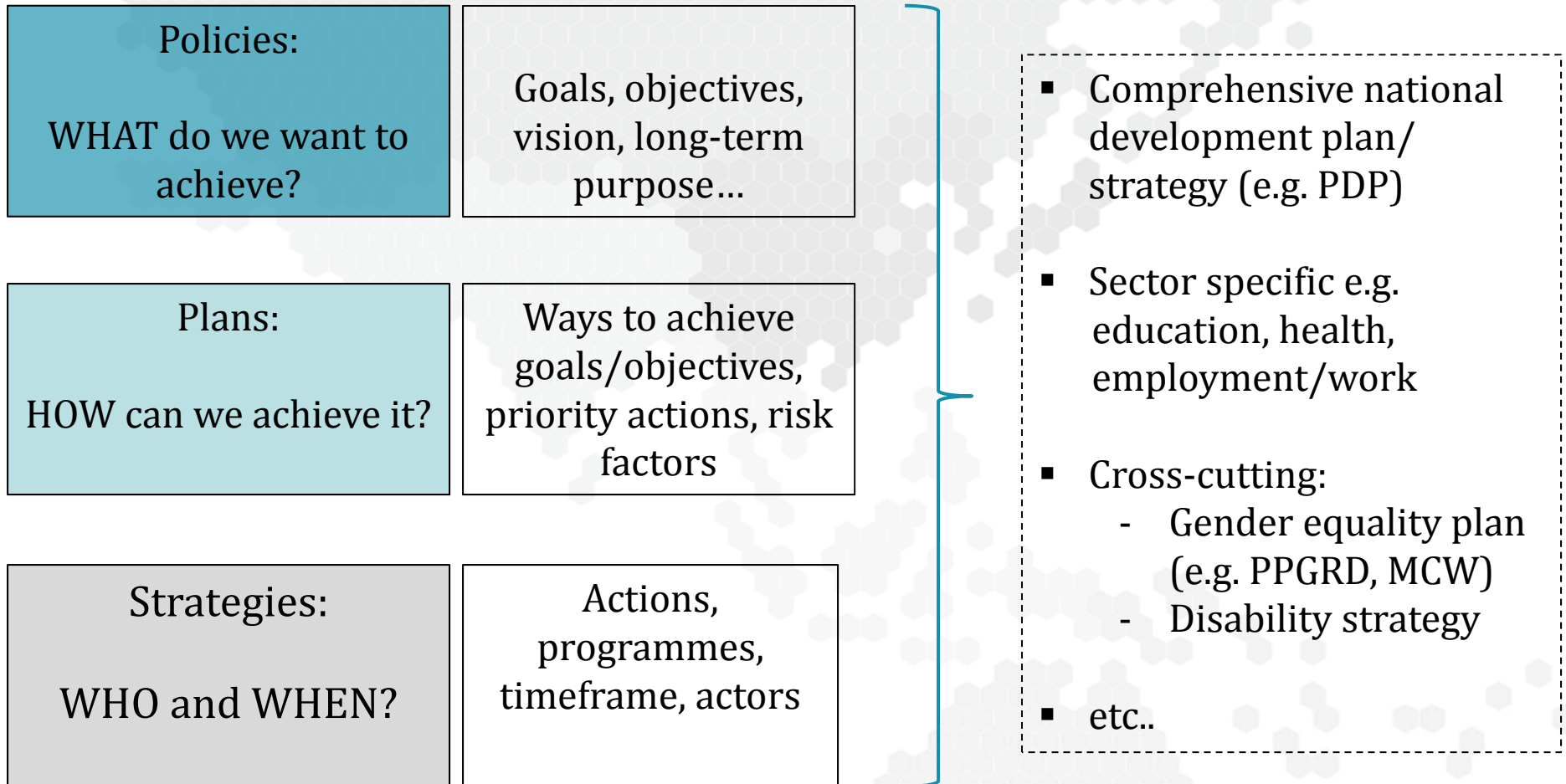
Session 1: Setting the scene

Connecting policies and data in the context
of women's economic empowerment (WEE)

Sharita Serrao
Statistics Division



National policies/plans/strategies



National policies/plans/strategies related to WEE: “whole-of-government”

.... to **succeed and advance economically** and to make and act on **economic decisions...**

Report of the UNSG HLP on Women’s Economic Empowerment (2016)

....transformational process, in which women gain increased **access to and power over economic assets and economic decisions...**

Report of the European Parliament's Committee on Women’s Rights and Gender Equality (2017)

National policies/plans/strategies related to WEE: conceptual framework

Enabling/constraining factors



Women's individual and collective lived experience
(direct factors)



Wider structural conditions / environment
(underlying factors)

Wide range of WEE-related policy actions/ issues and outcomes, e.g.

Issues/policy actions:

1. Unemployment benefits; social pension; childcare support.
2. Employment guarantee schemes.
3. Legal framework for maternity/paternity/paternal leave.
4. Etc.

WEE outcomes:

1. Alleviate women's poverty.
2. Increase women's ability to cope with shocks.
3. Enhancing opportunities for women's employment.



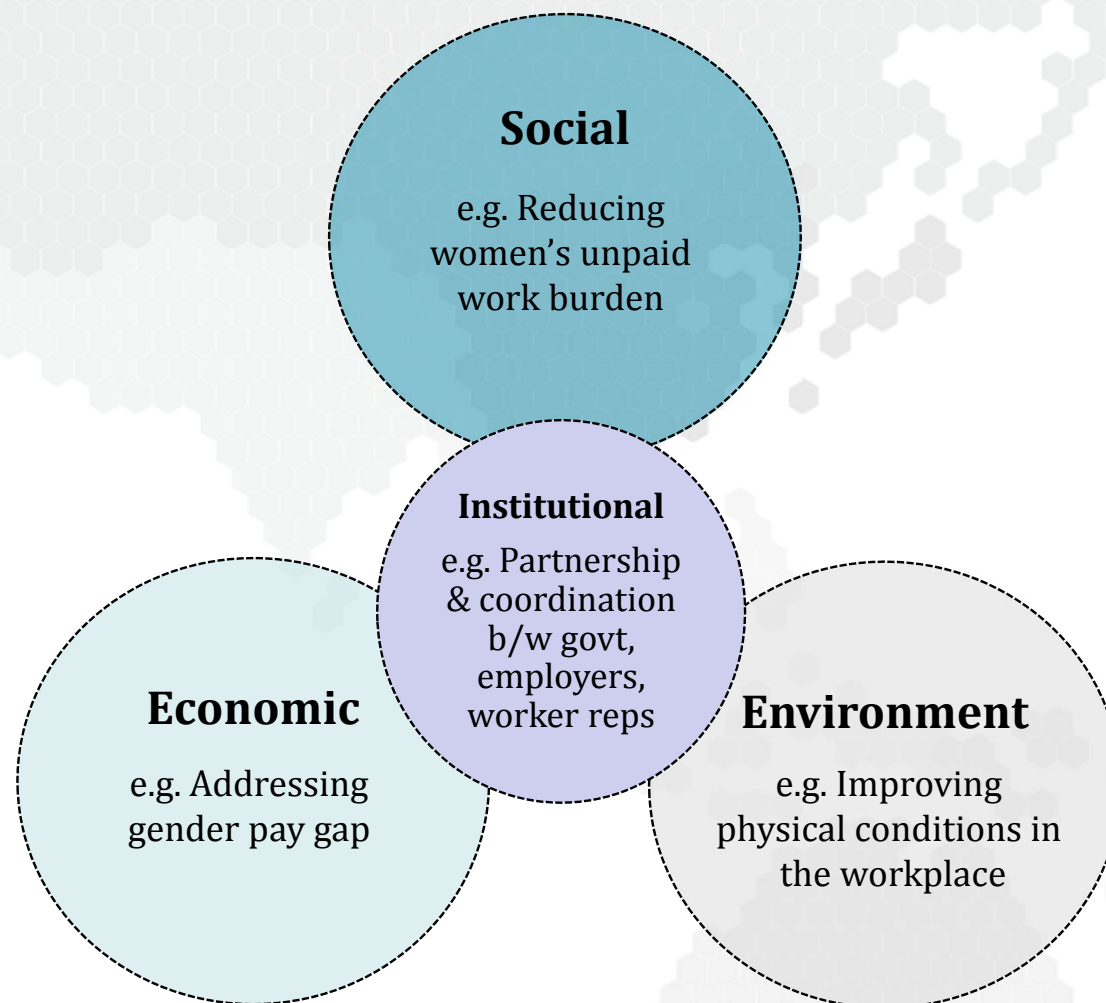
Issues/policy actions:

1. Increase girls' access to education.
2. Increase legal age for marriage.
3. Increase women's access to financial resources, assets.
4. Etc.

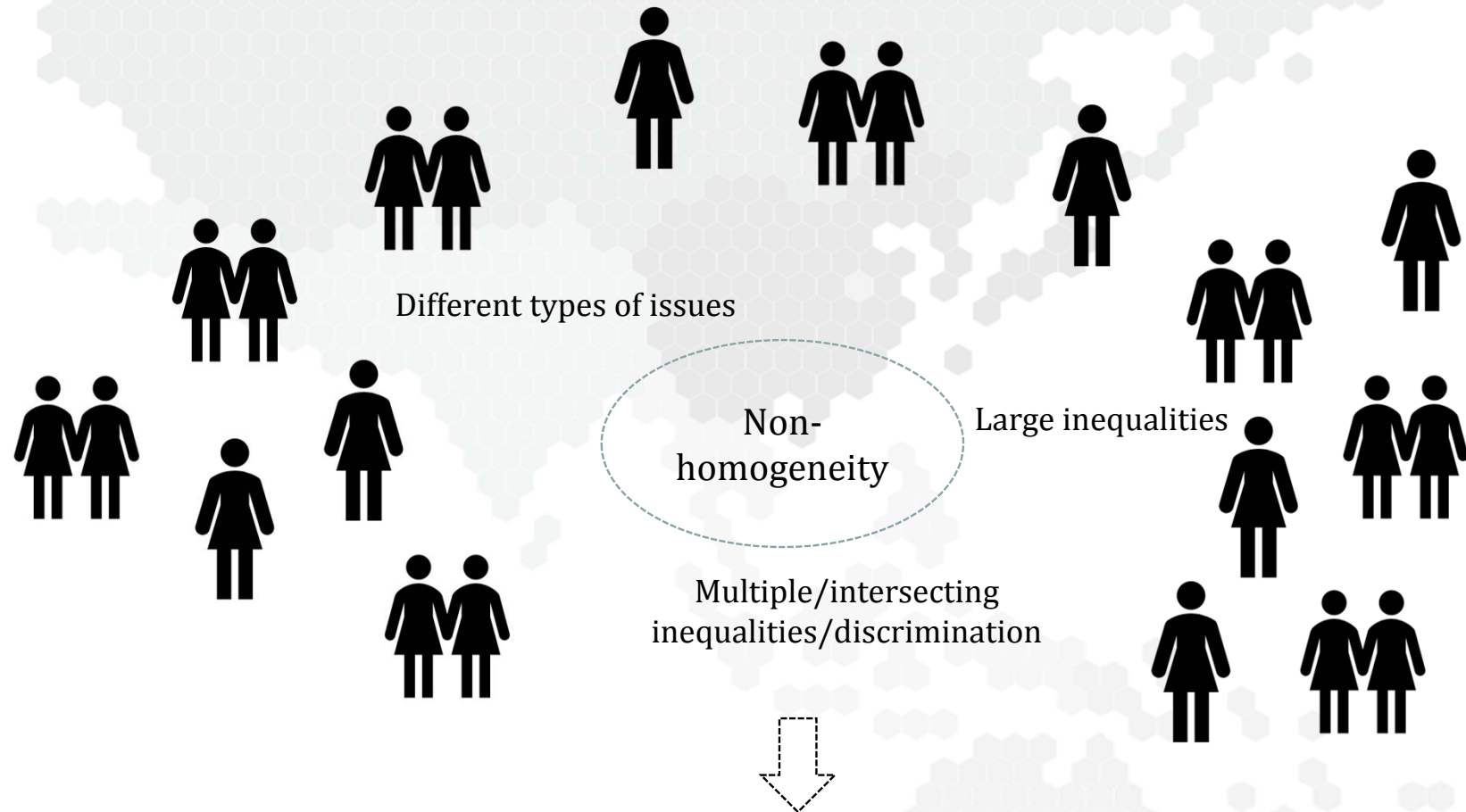
WEE outcomes:

1. Address (social) norms that see men as economic providers and women as mothers/carers.

National policies/plans/strategies related to WEE: interlinked dimensions of development

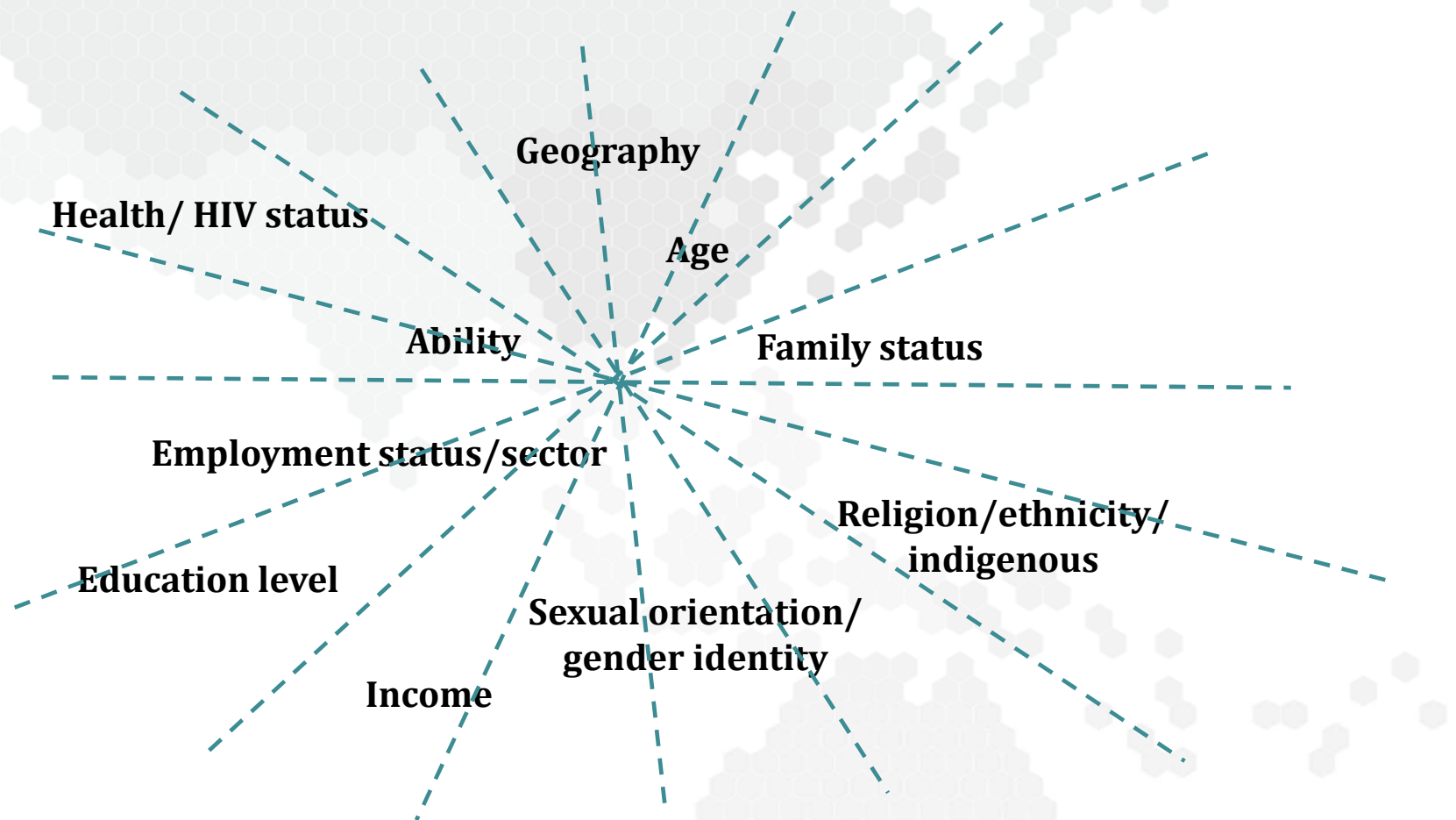


WEE population/target groups: reaching the most marginalized & *leaving no-one-behind*

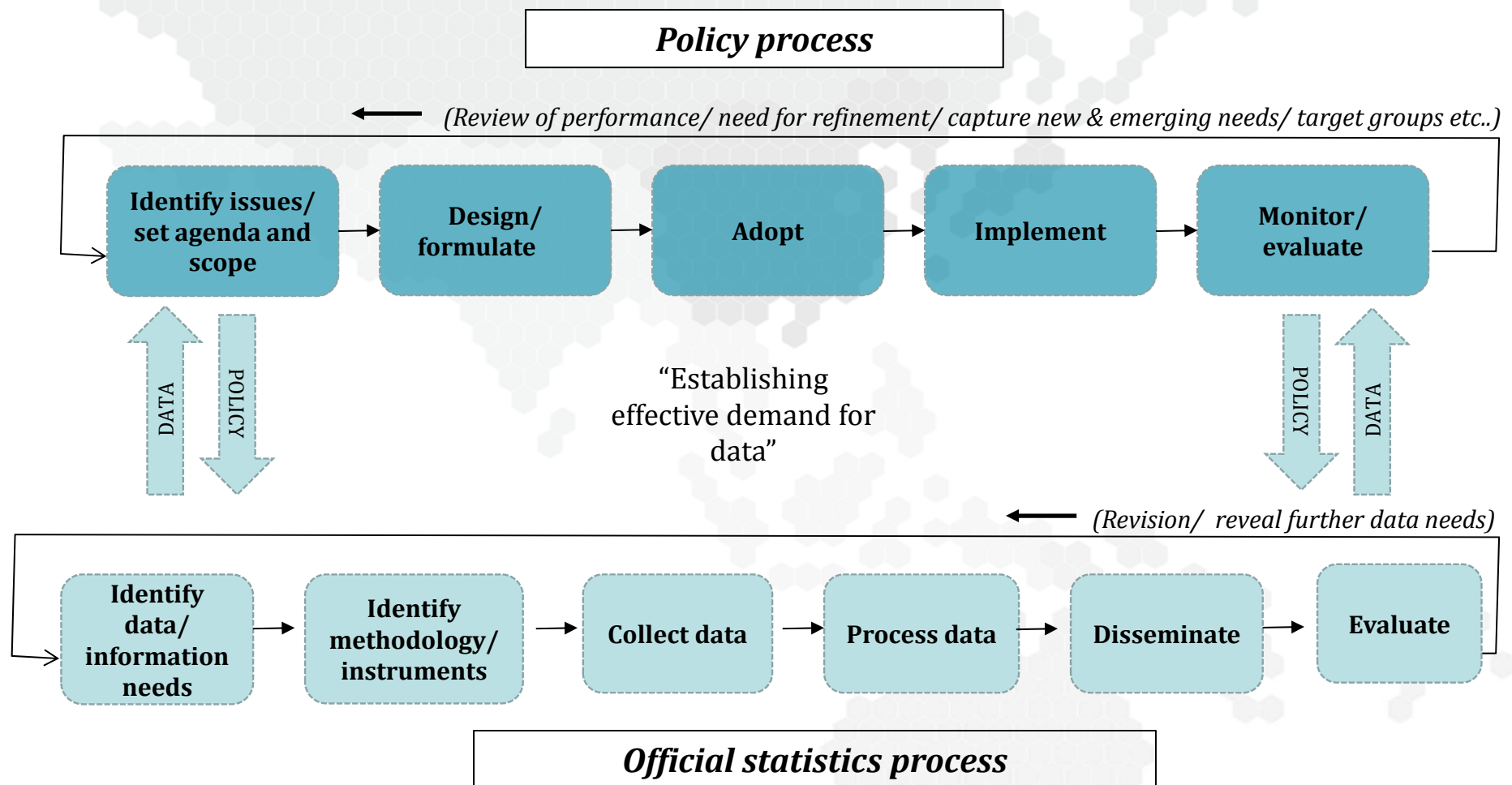


From national aggregates to collection methods/disaggregated data allowing for comparison between different groups of women and girls

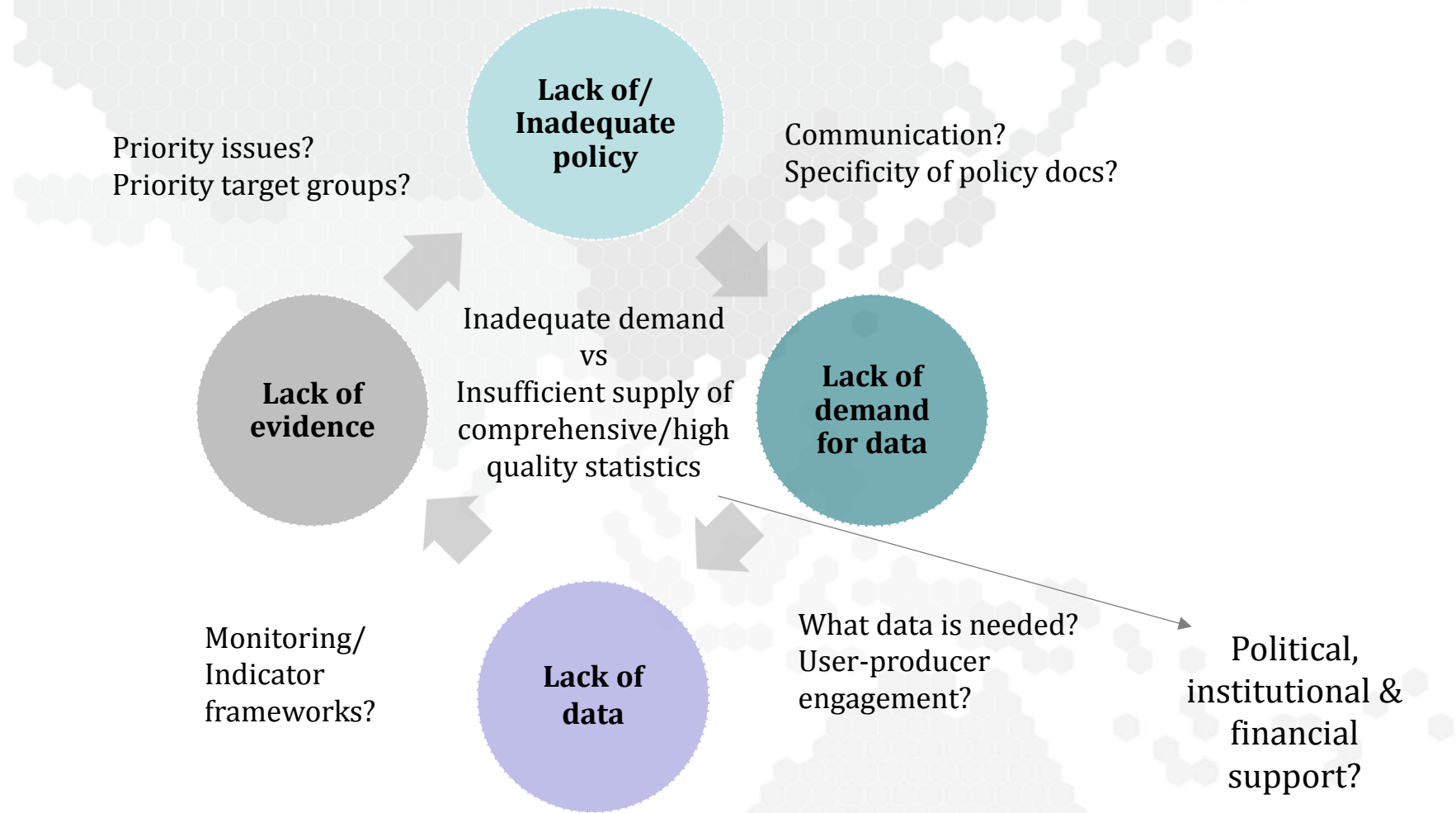
WEE population/target groups: intersectionalities & nested disaggregation needs



Interaction between policy and data: what and how?



Policy versus data



From vicious to virtuous cycle...

1. Engagement of NSO with policy counterparts:

- Priority pop groups, issues, needs.
- Priority stat info needs in NSDS/ master plans.
- Align work programme of NSO/stat units.

2. Review of existing/planned comprehensive and/or sectoral policies/plans/strategies (relevant for WEE):

- Coverage of relevant pop groups /their issues.
- Needs for data/ official stats for inclusive dev.
- Guided by 2030 Agenda/other intl. & reg dev frameworks.

3. Incorporation of such pop groups & issues into relevant national monitoring/indicator frameworks:

- Information and accountability tools
- Political support & investment needed

National sustainable development indicator set f(NSDIS) or WEE : what?

A collation of priority indicators at national level directly responding to WEE policy priorities

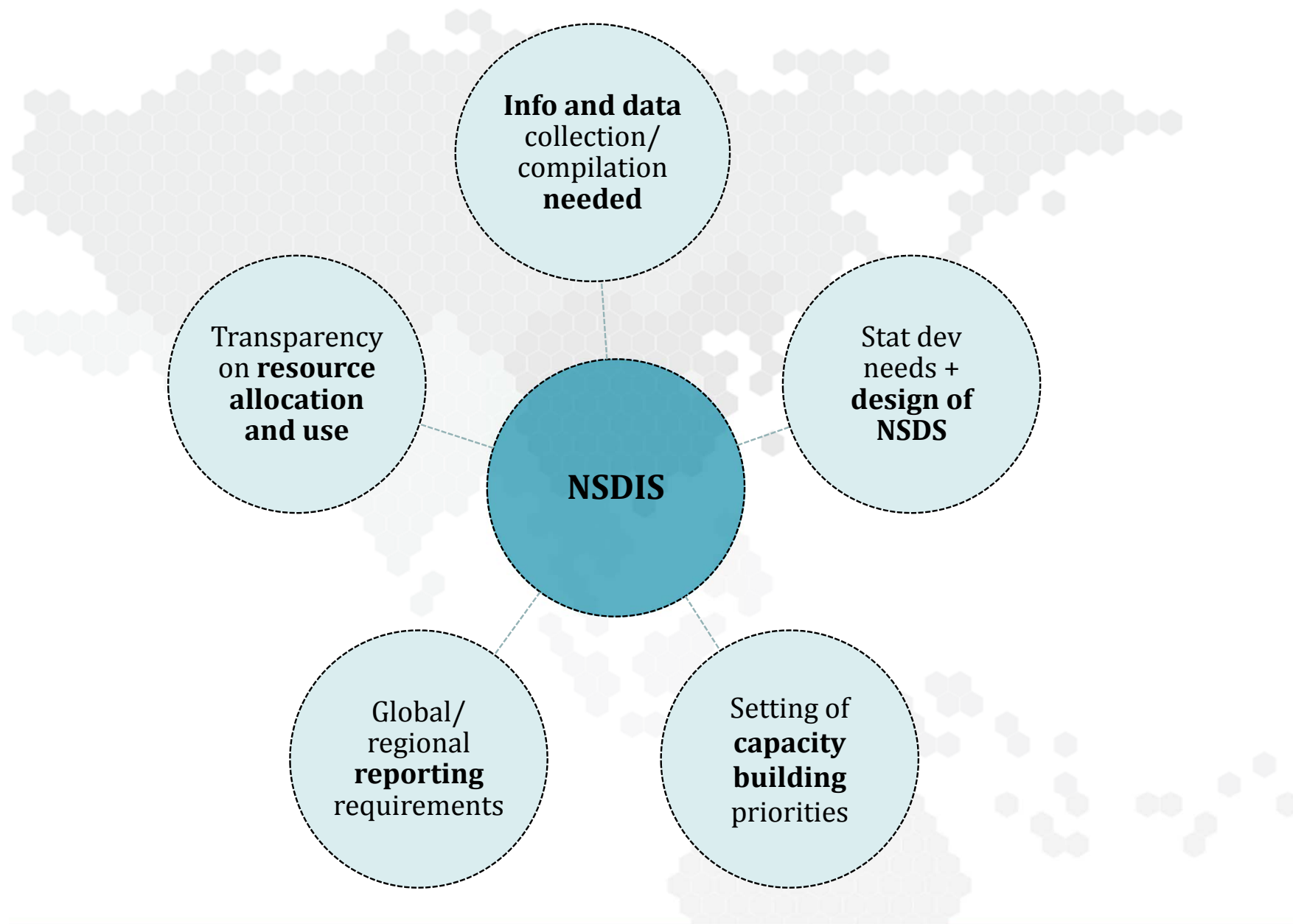
- Guided by indicators from:
 - **National documents:** National development plan; gender-equality plan; sectoral plans...
 - **Global indicator frameworks:** SDGs, Global Minimum Set of Gender Indicators (endorsed by the UN Statistical Commission)
 - **Regional indicator frameworks:** Regional Core Set of Gender Indicators; Incheon Strategy on Disability etc. (endorsed through regional-level inter-governmental processes)
 -

National sustainable development indicator set for WEE: broad context

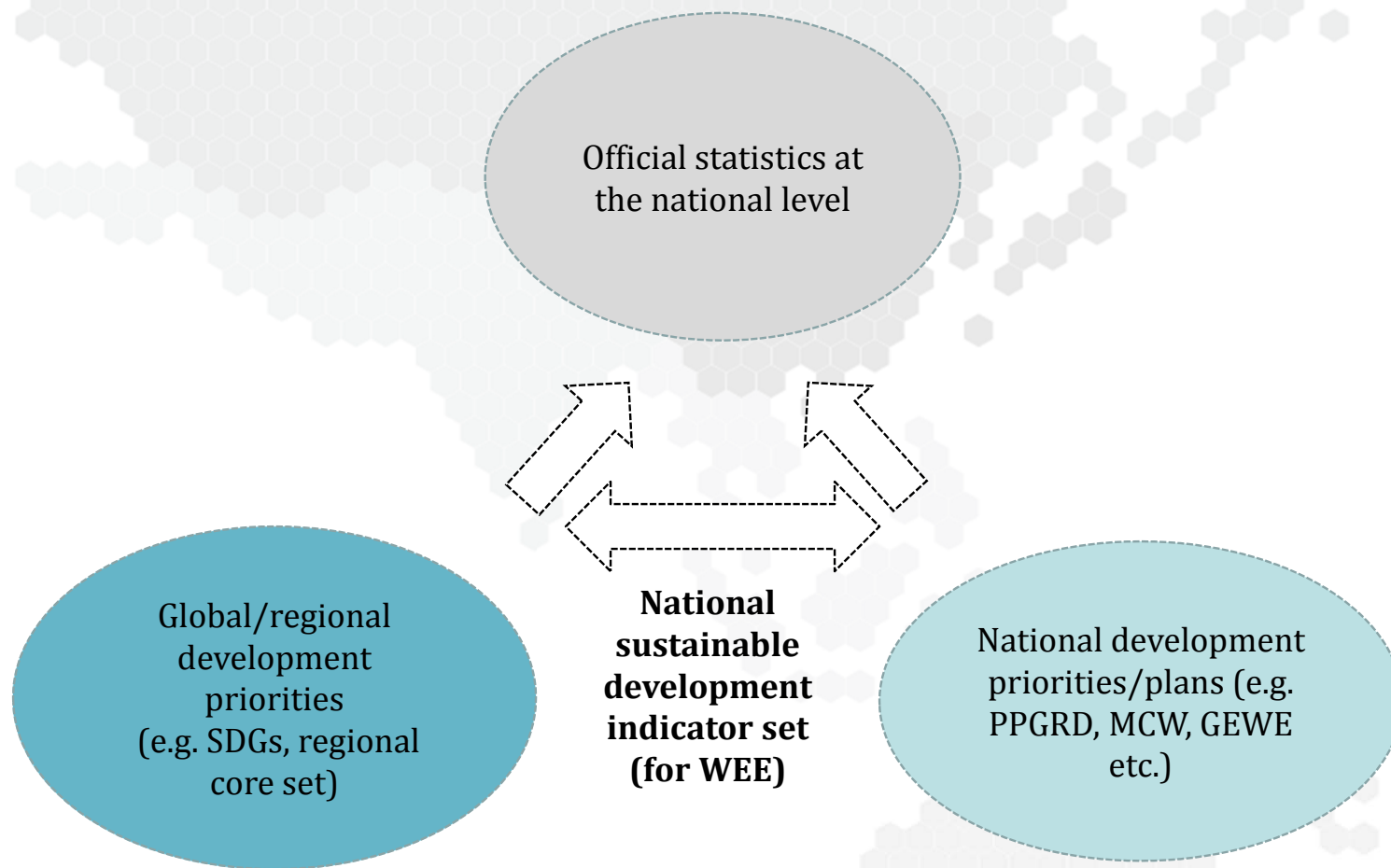
SDG 17. Strengthen the means of implementation and revitalize the Global Partnership for Sustainable Development

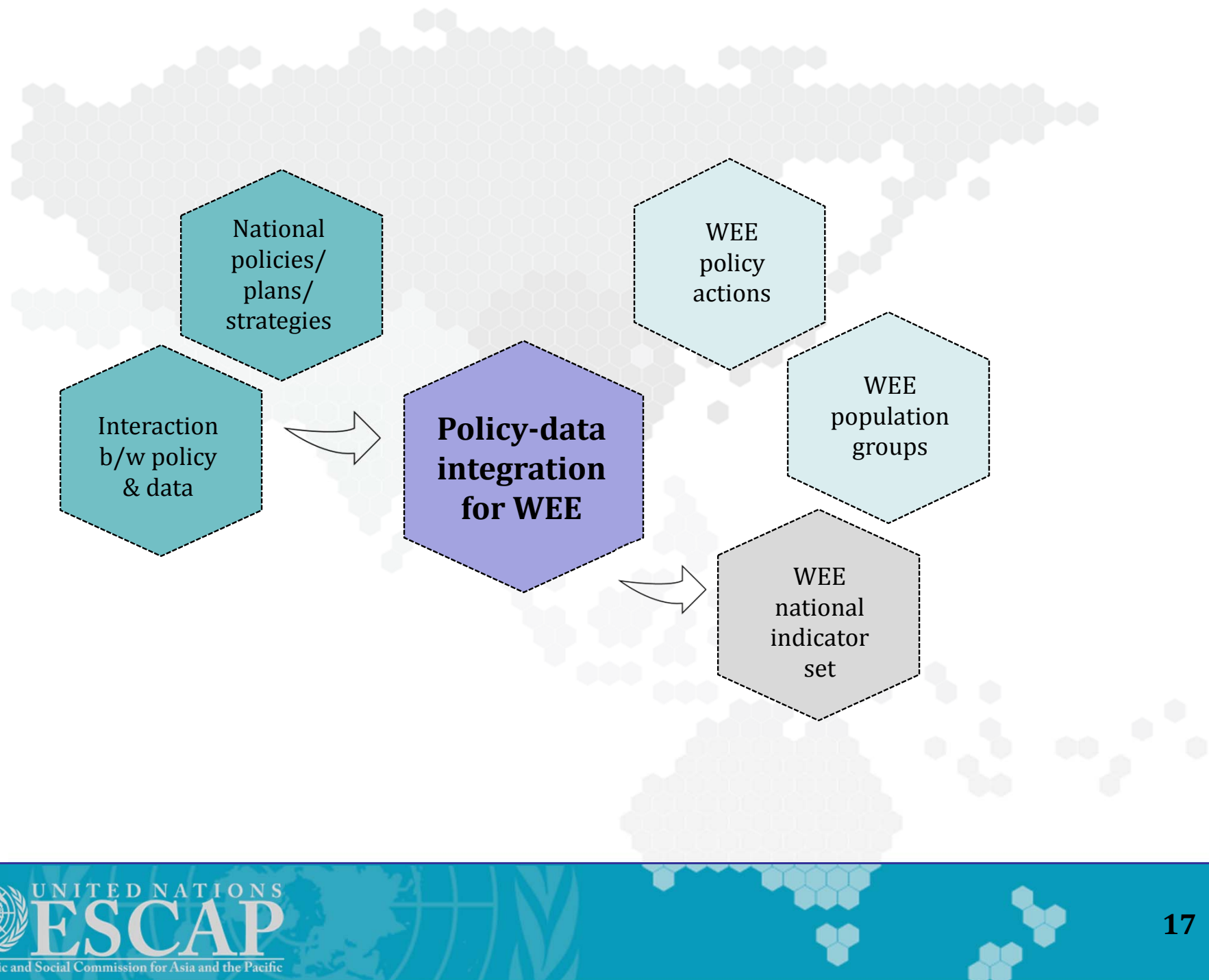
17.15 Respect each country's policy space and leadership to establish and implement policies for poverty eradication and sustainable development

- 17.15.1 Extent of use of **country-owned results frameworks** and planning tools by providers of development cooperation

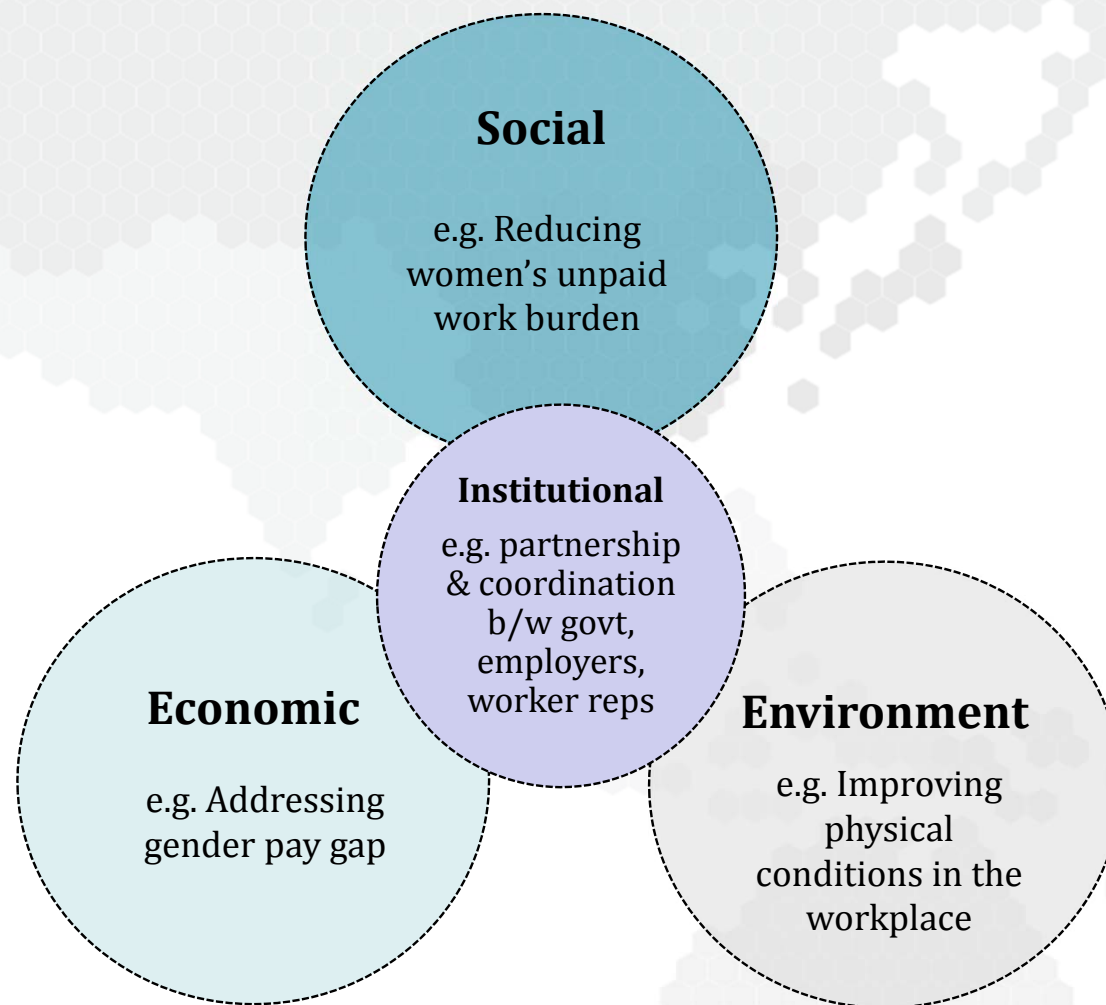


NSDIS: linking development priorities with official statistics...

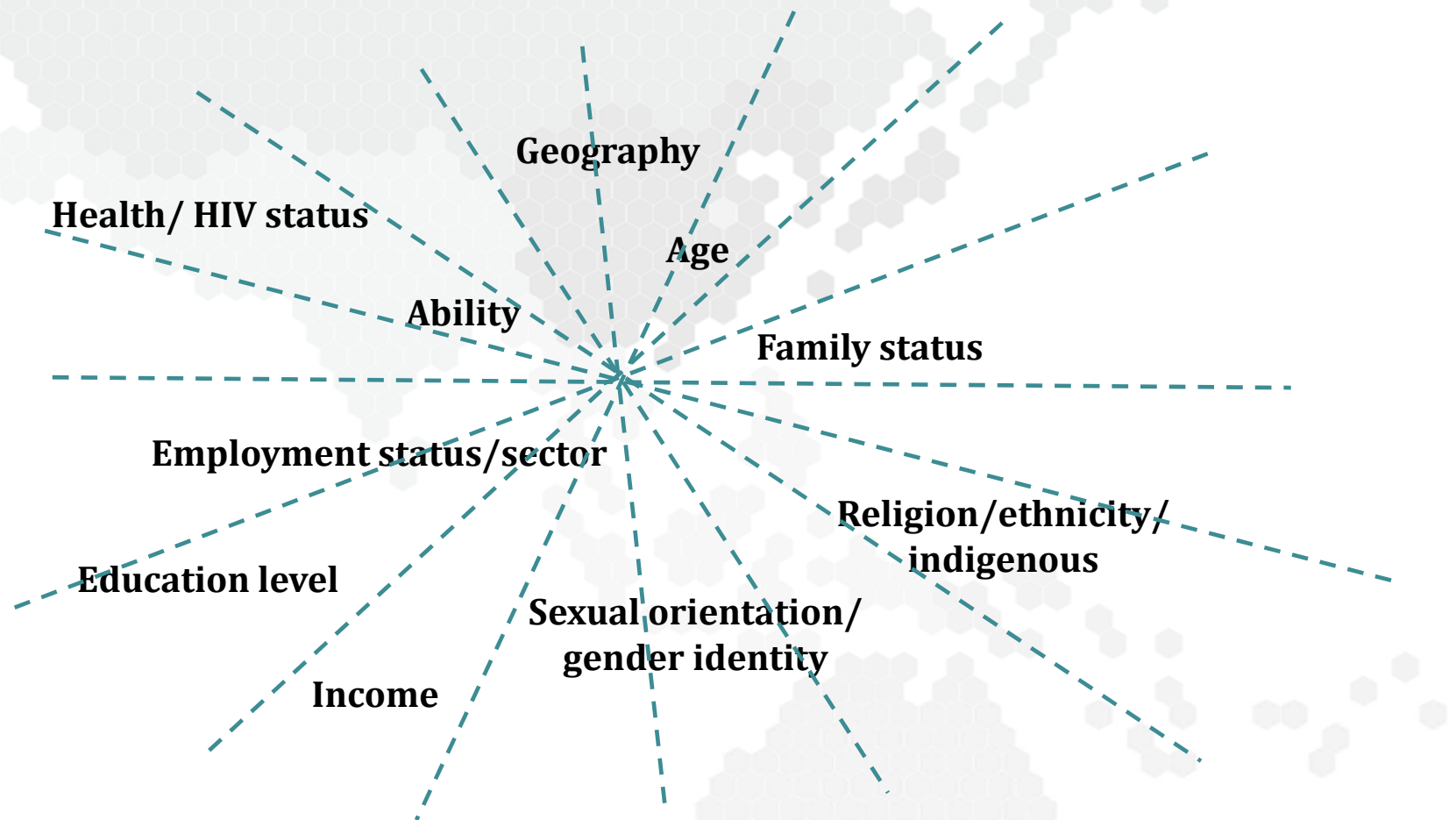




1. Integration across development dimensions



2. Integration across multiple characteristics/ inequalities/discrimination for W&G



3. Integration in policy-data process to establish demand

1. Engagement of NSO with policy counterparts:

- Priority pop groups, issues, needs.
- Priority stat info needs in NSDS/ master plans.
- Align work programme of NSO/stat units.

2. Review of existing/planned comprehensive and/or sectoral policies/plans/strategies (relevant for WEE):

- Coverage of relevant pop groups /their issues.
- Needs for data/ official stats for inclusive dev.
- Guided by 2030 Agenda/other intl. & reg dev frameworks.

3. Incorporation of such pop groups & issues into relevant national monitoring/indicator frameworks:

- Information and accountability tools
- Political support & investment needed