

East Asia Low Carbon Green Growth Roadmap Forum
 25-26 April 2012
 Garnet Room (37th Floor), Lotte Hotel,
 Seoul, Republic of Korea

Session 3: Visible system change:
Sectoral issues on urban planning and design,
transport, green buildings, energy, water and waste systems.

Takashi Hongo
 Senior Fellow
 Mitsui Global Strategic Studies Institute

1

Public Transport

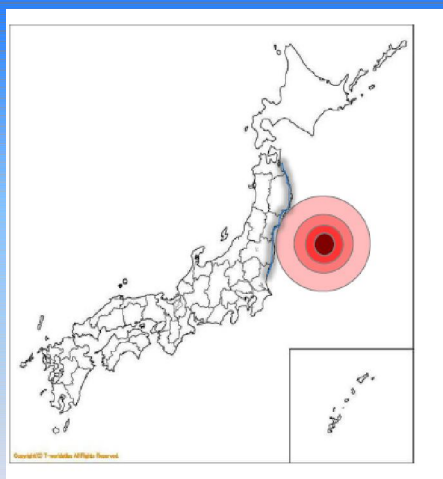
~ Low Environment Impact, Convenient and Safety ~

	hours	CO2 emission	Government support
High speed city link (Shinkansen)	2hrs48 min.	11kg/person	Lease of new line by public company
Car (Motor way)	7hours +	83kg/person	Owner of motor way is public company
Flight	1hour 15minutes+ ground transport (2hrs30min+)	137kg/person	Airport authority

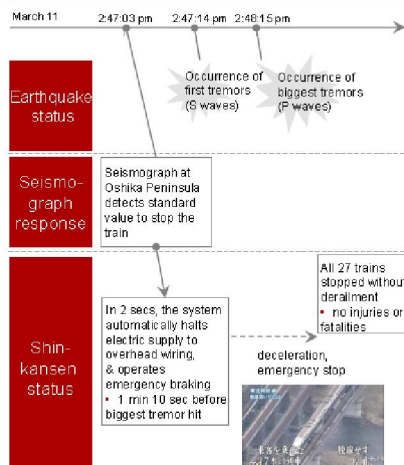
Source NaviTime, ICAO

2

The Great East Japan Earthquake and Shinakansen

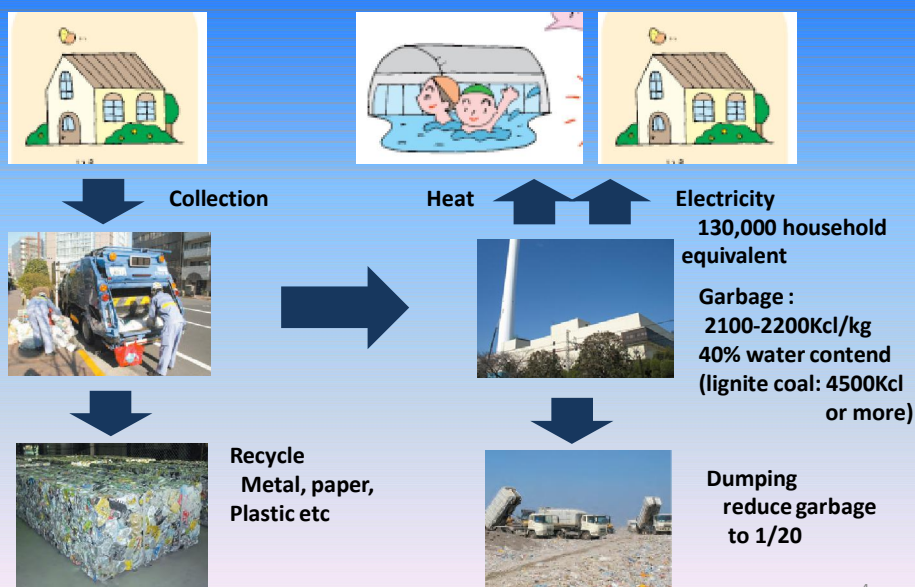


Succeed in making an emergency stop without derailling

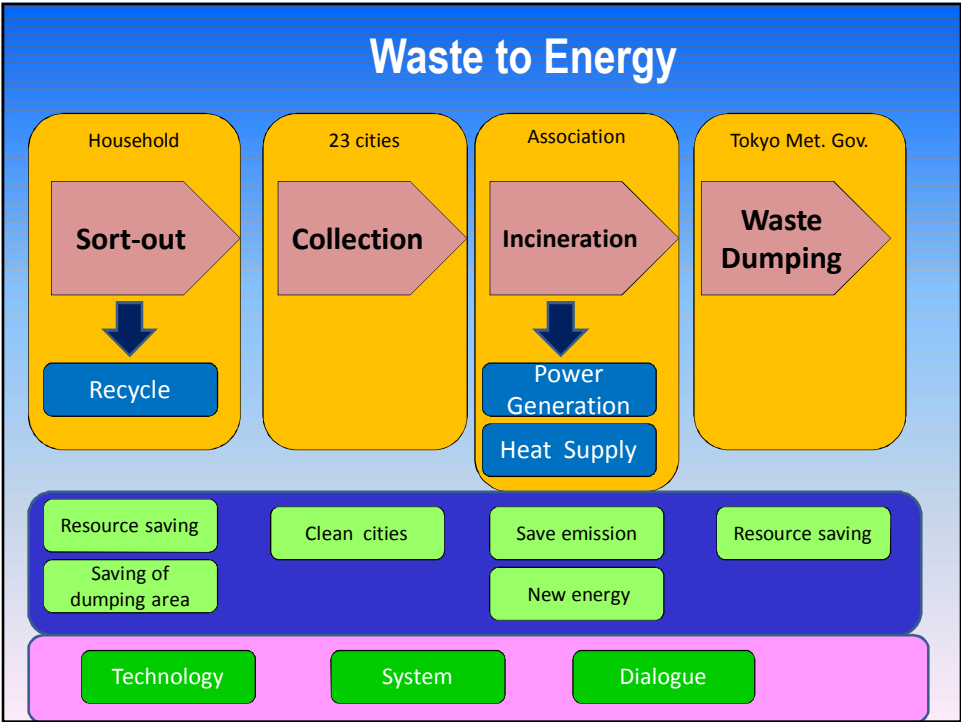
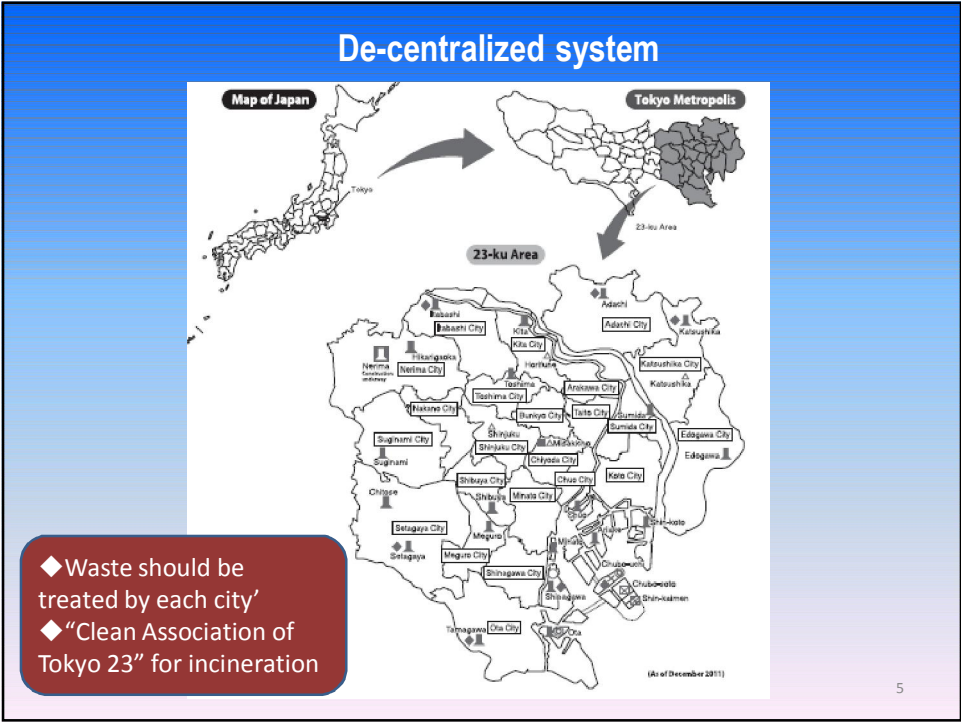


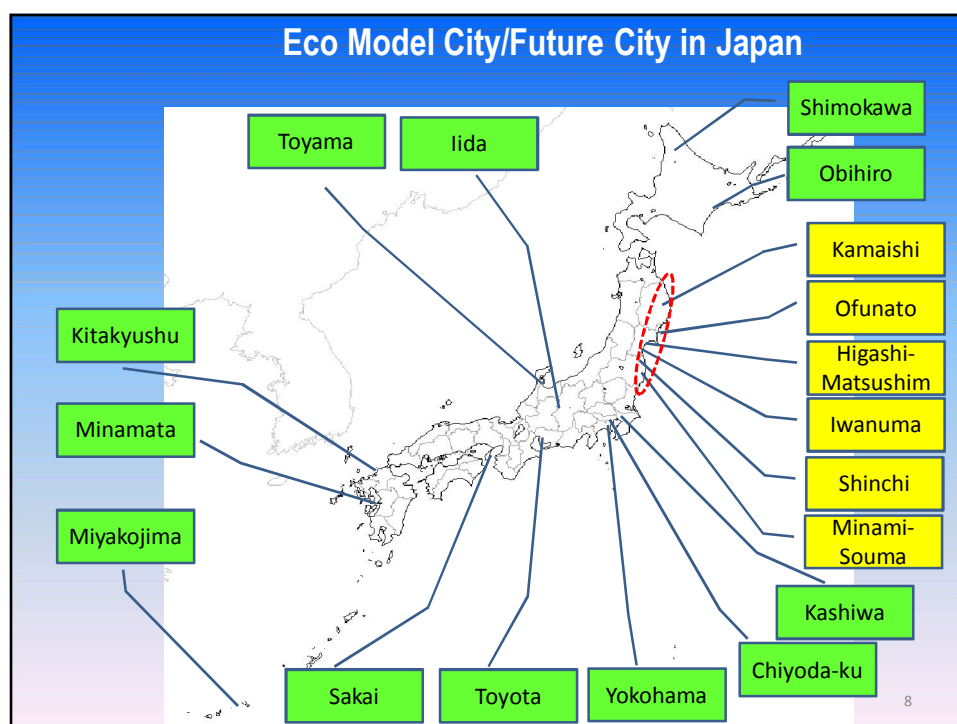
3

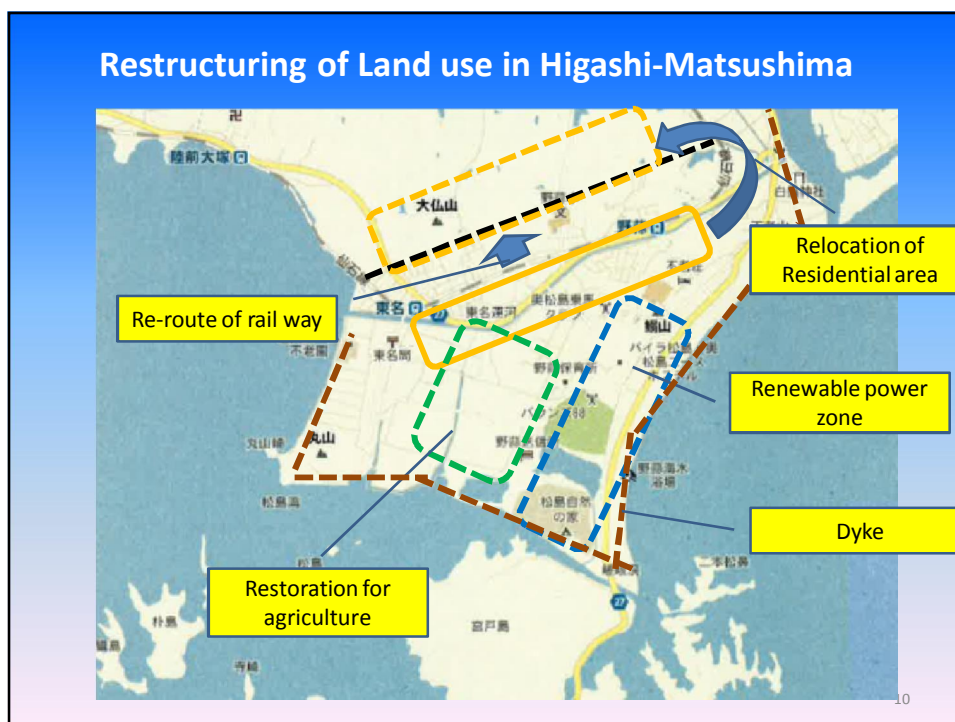
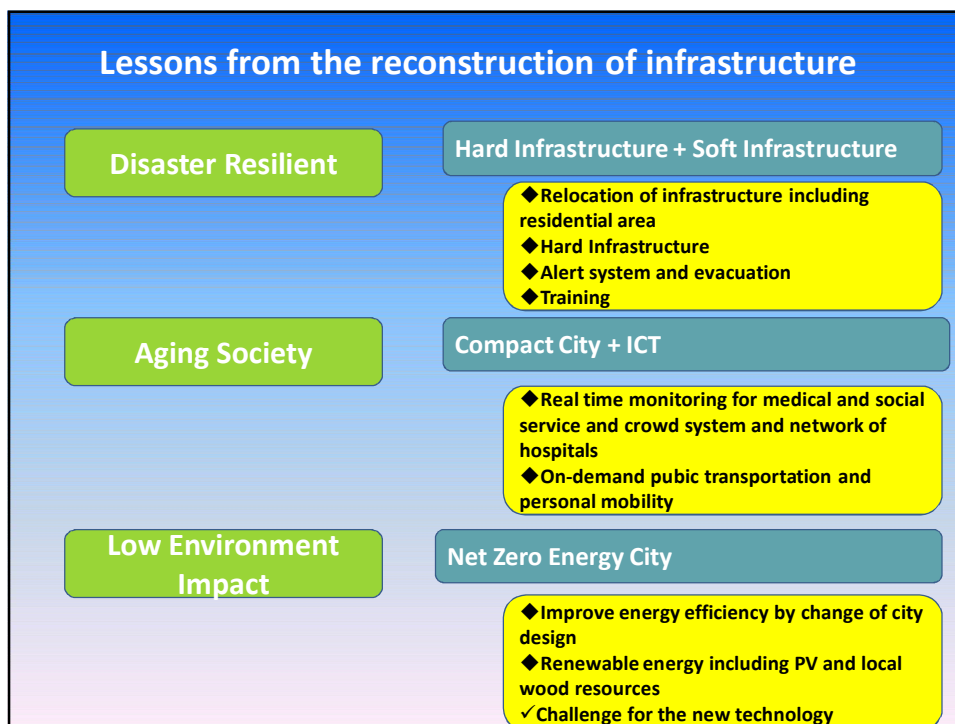
Waste Treatment system in Tokyo MG



4







New Technologies for Reconstruction

	Aging society	Low Carbon Economy
Kamaishi	Medical and social care services by ICT, Electric power assist bicycle	Wind power and wood biomass generation. LNG co-generation. Power generation from rubble by melting furnace technology
Ofunato, Kesennuma	On-demand Bus, micro vehicle	Mega solar, and wind power. Fishing freezer by renewable energy. Wood pellet stove by local wood resources
Higashi-Matsushima	Medical and social care services by multi media, new personal mobility and taxi sharing	Net Energy Zero City. Mega solar. Biomass energy including micro algae
Iwanuma	Medical service by crowd system	Eco Compact City, mega solar
Shinchi	On-demand transportation by Electric vehicle, improvement of service by tablet terminals	Coal-biomass power generation, mega solar
Minami-Soma	Co-house and reunification of community	Mega solar, wind and biomass power. Horticulture by renewable energy

11

Why Green Economy?



12

