

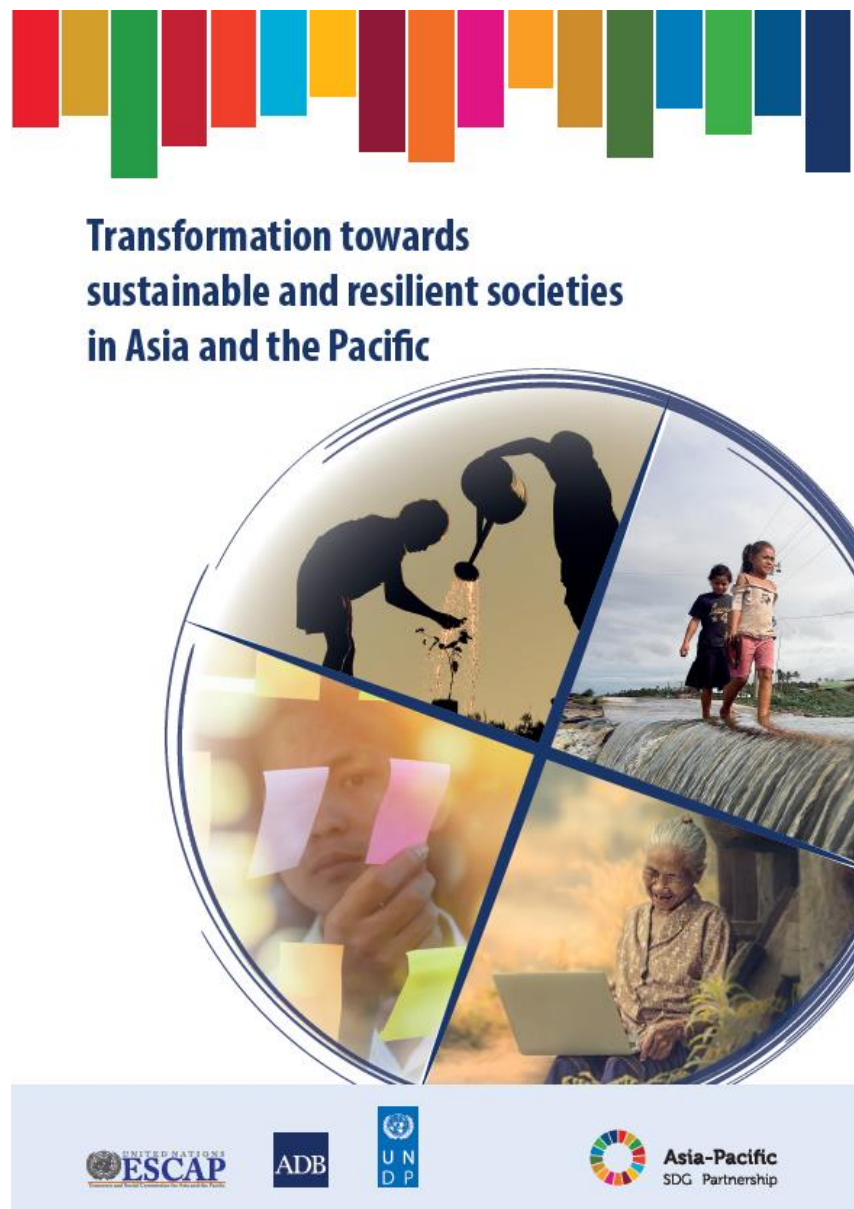
Perspectives on the APFSD and HLPF theme 2019

“Empowering people and ensuring inclusiveness and equality”

Arun Jacob
ESCAP

North and Central Asian Forum on Implementation of
the Sustainable Development Goals

3-4 September 2018, Tbilisi, Georgia



Summary of the SDG partnership report 2018

- discusses the complex landscape of risks and resilience in Asia and the Pacific
- points to the implications of selected megatrends in the Asia-Pacific region
- how resilience is related to targets and indicators of the sustainable development goals
- focusses attention on four types of inter-related resilience capacities, providing examples of efforts to strengthen each
- illustrates a three-step approach to incorporating resilience into policymaking by means of a case study on food systems
- draws conclusions for innovative policymaking

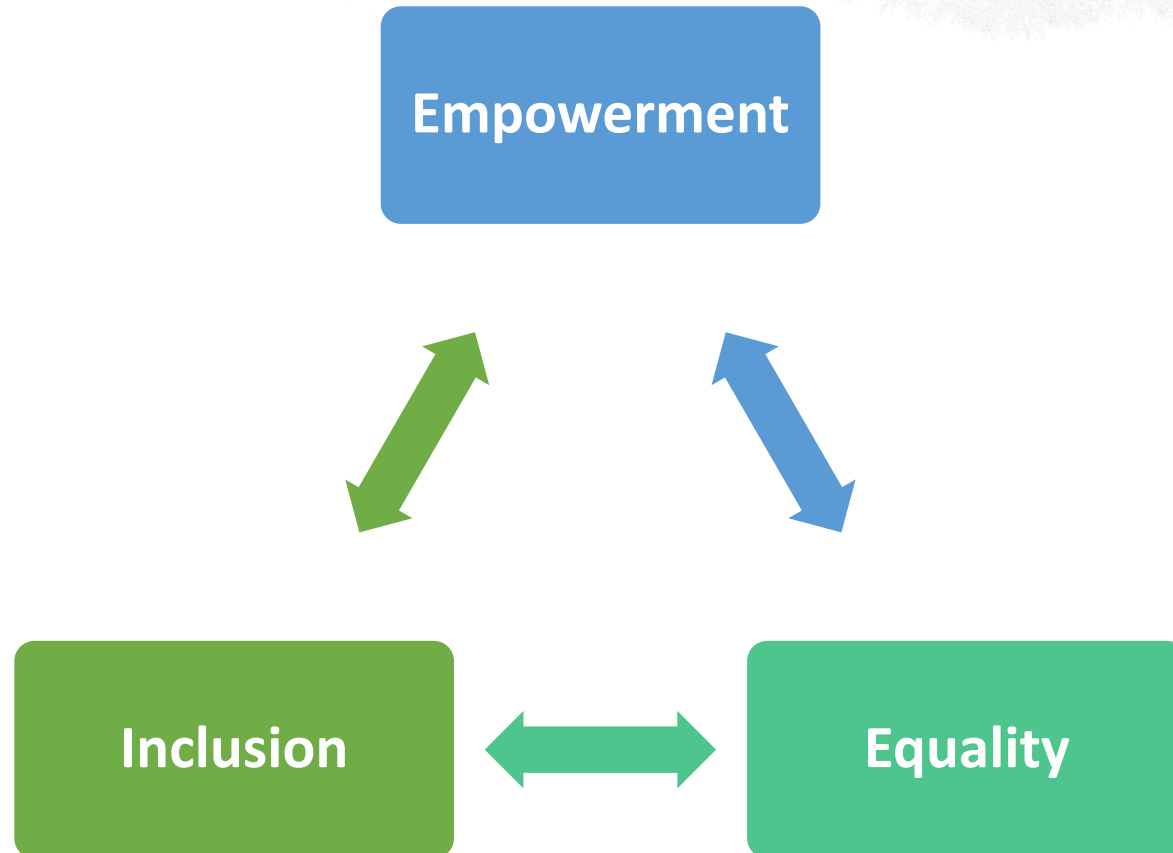


HLPF and
APFSD Theme
2019

Empowering people and ensuring inclusiveness and equality

Initial framework from ESCAP

Three central concepts of the HLPF 2019 theme



Empowerment

- Expansion of freedom of choice and action, increasing control over resources and decisions that affect one's life

Inclusion

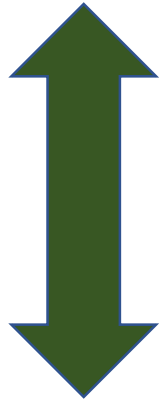
- Ensure *no one is left behind*

Equality

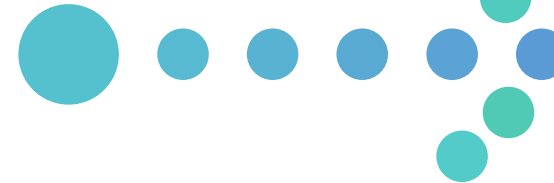
- Address enormous disparities of opportunity, wealth and power

Relationship between empowerment, inclusion and equality articulated in SDG target 10.2

Inclusion



Empowerment



Vulnerable groups

women and girls

children

youth

persons with
disabilities

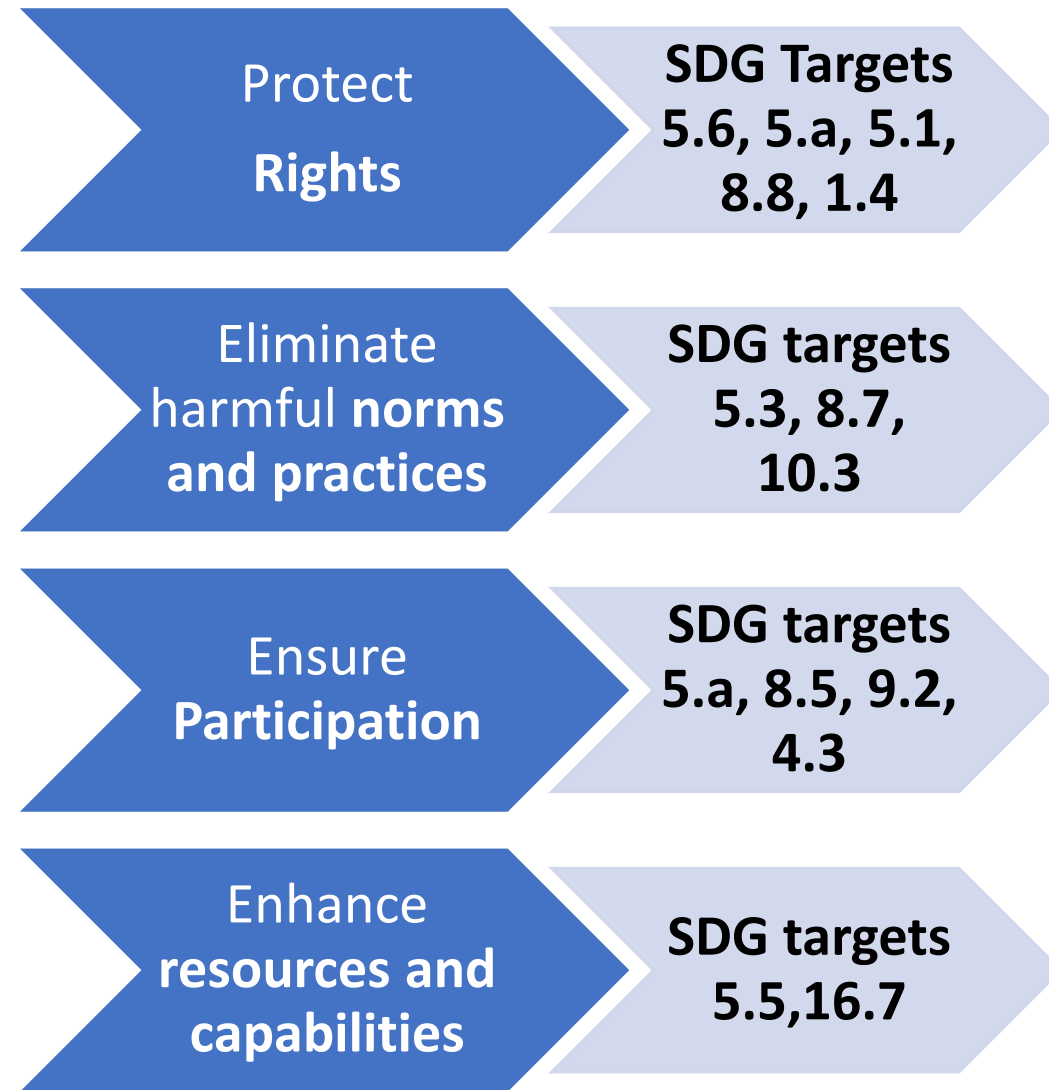
people living with
HIV/AIDS

older persons

indigenous
peoples

refugees, internally
displaced persons
and migrants

Four components of empowerment and inclusiveness approach derived from relevant SDG targets



Empowerment and inclusiveness approach can be applied to several SDG areas





Case Study Presentations

Questions

- **How does your entity understand empowerment?**
- How does your project/ programme support empowerment, inclusion and equality ? How does that in turn strengthen the ability of people to contribute to and/ or accelerate progress on specific SDGs (especially the ones in focus, SDGs 4 ,8, 10, 13, 16 and 17)?
- Who is being empowered by the project/policy?
- **What are the barriers and systemic issues related to empowerment of vulnerable groups and ensuring inclusiveness and equality?**
- What is a key learning from your project on how to promote the empowerment of people and ensuring inclusiveness and equality?
- **Which national policies are helpful when it comes to empowering people and ensuring inclusiveness and equality?**

Questions for Group Work

- **How does your entity understand empowerment?**
- **What are the barriers and systemic issues related to empowerment of vulnerable groups and ensuring inclusiveness and equality?**
- **Which national policies are helpful when it comes to empowering people and ensuring inclusiveness and equality?**