



GREENING THE UNITED NATIONS

Aneta S. Nikolova

Environment and Development Division



UN ENVIRONMENTAL SUSTAINABILITY

KEY DRIVERS



Lead by
example



Consistency
with the
SDGs



Reputational
gains



UN policy
framework



Financial
savings

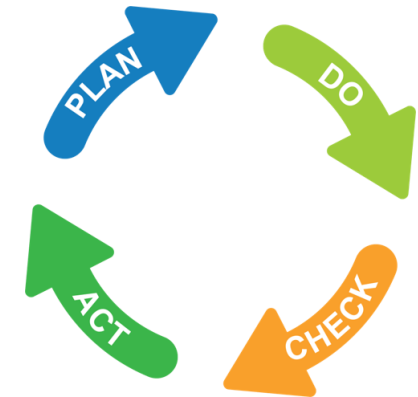
KEY SUSTAINABILITY INITIATIVES



ENVIRONMENTAL MANAGEMENT SYSTEM

EMS

A set of processes that enable organizations to plan, monitor and continually improve their environmental performance while increasing their operating efficiency – ISO 14001 PDCA cycle



ESCAP KEY ENVIRONMENTAL ASPECTS



KEY INITIATIVES

WASTE



MAY 2018 MIXED WASTE AUDIT

We aim big!

The UN Compound in Bangkok goes single-use catering items free

BEAT
PLASTIC
POLLUTION

WORLD
ENVIRONMENT
DAY

UN
environment

UNITED NATIONS
ESCAP
Economic and Social Commission for Asia and the Pacific

GREENING
THE BLUE.



NO PLASTIC STRAWS,
NO SINGLE-USE
CONTAINERS & PLATES

NO
SINGLE-USE
CUPS



NO PLASTIC WRAPS
AND SINGLE-USE
SUGAR PACKETS



SEPTEMBER

NOVEMBER

JUNE

OCTOBER

DECEMBER

NO PLASTIC
BAGS AND
CUTLERY

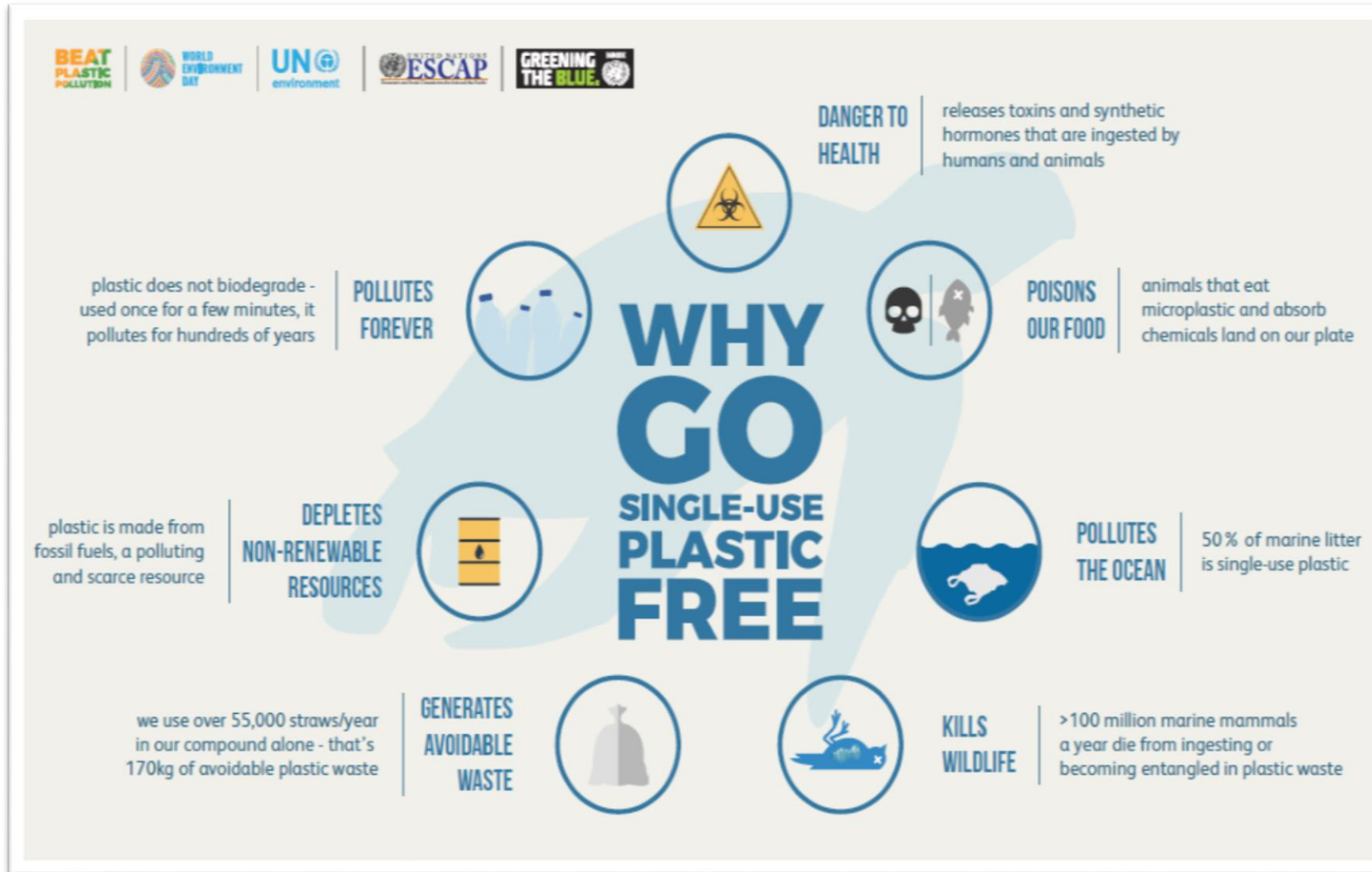


NO PLASTIC
BOTTLES



SINGLE-USE CATERING ITEMS BAN

KEY INITIATIVES



STAFF AWARENESS CAMPAIGNS

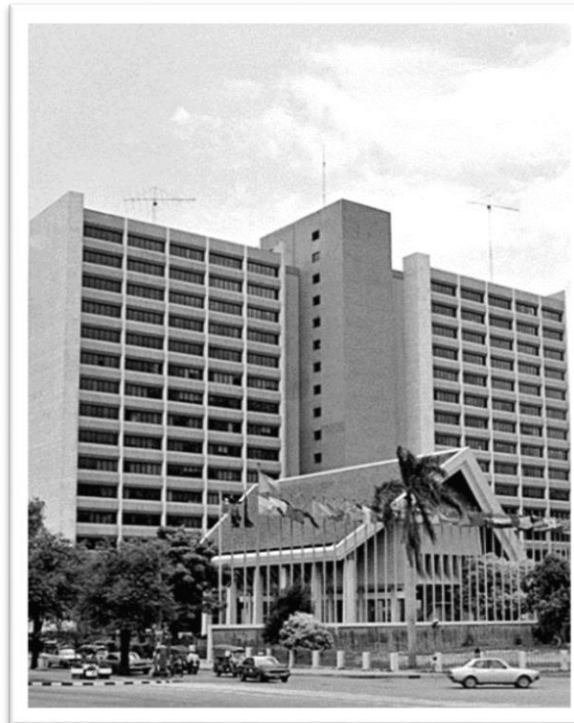
KEY INITIATIVES

ENERGY



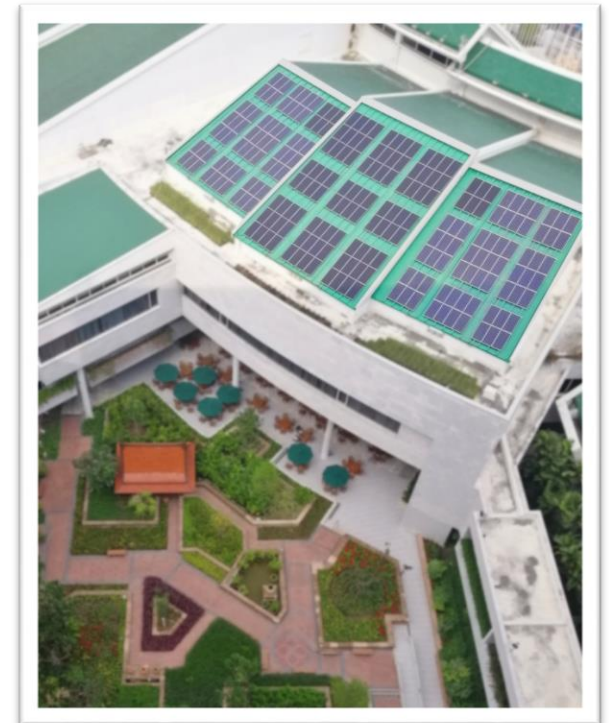
EARTH HOUR

Up to 90 t CO₂e
156,000 kWh
saved per year



ENERGY EFFICIENCY

SMP renovation
works 16-18 %



SOLAR PANELS

500 extra solar
panels in 2019
(256 kW)

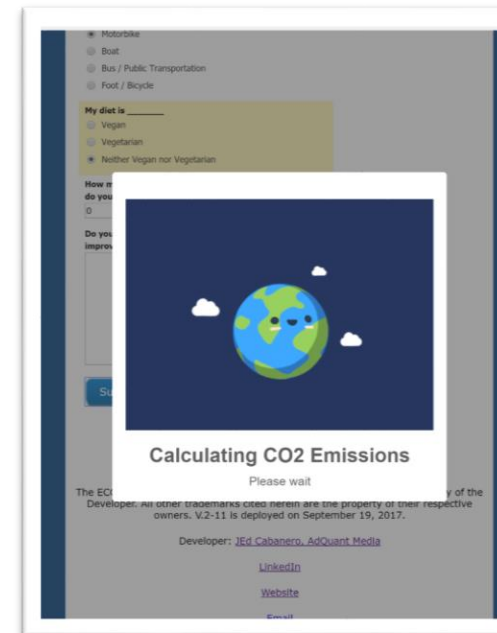
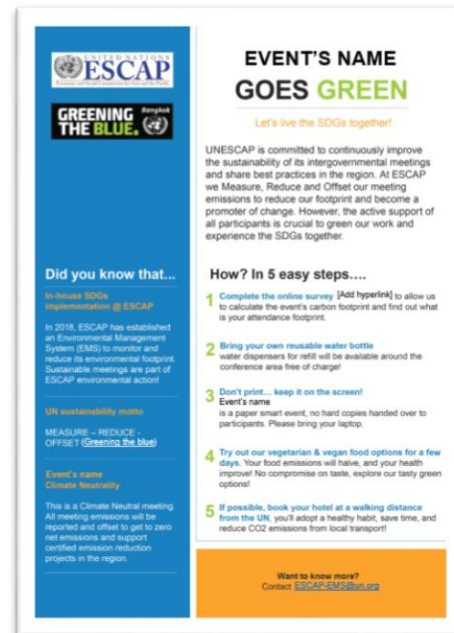
MEETINGS

EMS TARGETS IN ACTION

All ESCAP intergovernmental meetings' emissions will be offset in the first EMS cycle.

SUSTAINABLE MEETINGS

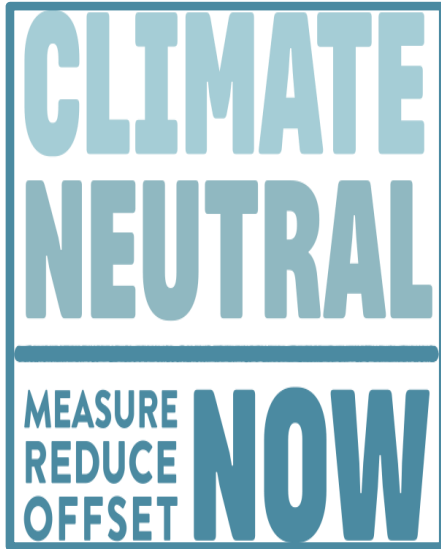
- Carbon accounting
- Emissions offsetting
- Paper smart
- Waste prevention
- Teleconferencing
- Sustainable menus
- Participants awareness raising



Have you completed your carbon neutral ECO survey?



OTHER INITIATIVES



OFFSETTING

ESCAP offset its 2017 & 2018 emissions



SUSTAINABLE COMMUTE

New bicycle lockers & video to promote cycling to work

A screenshot of a web-based survey form titled "Environmental benefits of Flexible Working Arrangements in Bangkok - Assessment study". The form includes a header with the "GREENING THE BLUE" logo and a detailed introductory paragraph. Below the text, there are four sections for data entry: "1. First Name", "2. Family Name", "3. Organisation", and "4. ESCAP Division". Each section has a text input field and a "Select from reports" button. The form is framed by a blue border with a green and blue abstract design on the left side.

FWAs ENVIRONMENTAL ASSESSMENT SURVEY

Prevented emissions from FWAs in Bangkok



PILOT: online & Paper smart language classes

Compatibility with FWAs & waste prevention through smart use of technology

FUTURE INITIATIVES



ELECTRIC FLEET
Ongoing process



ARTIFICIAL
INTELLIGENCE

"WE" are the EMS



THANK YOU

