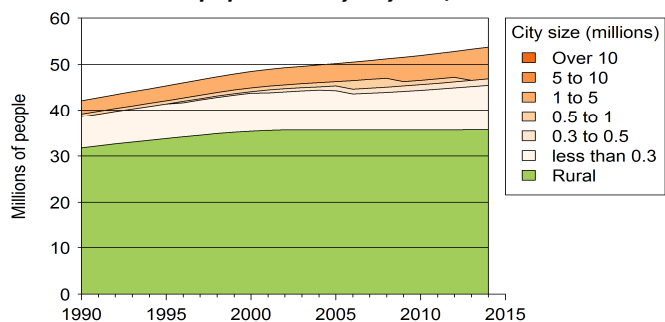




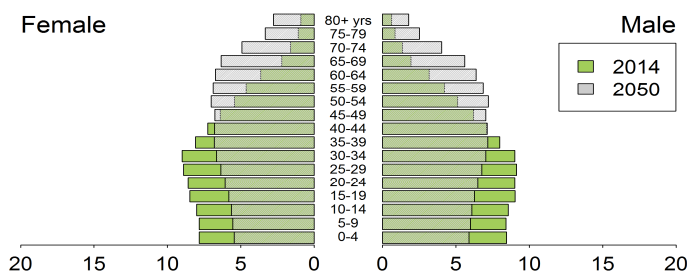
Demographic trends

Population size (millions), 1990, 2014	42.1	53.7
Average annual growth rate (%), 1990, 2014	1.6	0.9
Urban population (% of pop.), 1990, 2014	24.6	33.6
in cities over 1 million people	6.9	12.8
in cities from 0.3 to 1 million people	1.5	2.7
in cities < 0.3 million people	16.2	18.1
Population density (pop. per km ²), 1990, 2012	62.3	78.0
Foreign population (% of pop.), 1990, 2013	0.3	0.2
Net migration rate (migrants per 1 000 pop.)	-0.6	-0.4
Life expectancy at birth (in years), 1990, 2014	58.7	65.3
Total fertility rate, 1990, 2014 (Live births per woman)	3.4	1.9
Adolescent fertility rate, 1990-1995, 2010-2015 (Live births per 1 000 women aged 15-19 years)	29.8	12.1

Rural and urban population by city size, 1990-2014



Population age structure, female and male, 2014, 2050



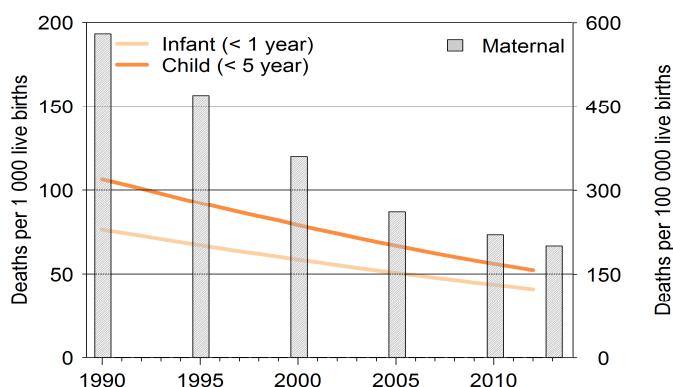
Poverty and inequalities

Population living in poverty		
below 1.25 dollars (2005 PPP) a day	-	-
below 2 dollars (2005 PPP) a day	-	-
below national poverty line (% of population)	-	-
Gini index (income equality coefficient)	-	-
Population with access to		
Improved water sources (% of pop.)		
Rural, 1990, 2012	48.0	81.0
Urban, 1990, 2012	80.0	95.0
Improved sanitation (% of pop.)		
Rural, 1991, 2012	45.0	74.0
Urban, 1991, 2012	77.0	84.0

Health

Mortality rate (deaths per 1 000 live births)		
Infant, 1990, 2012	76.1	41.1
Under-five, 1990, 2012	106.4	52.3
Children under-five underweight (%), 1990, 2009	32.5	22.6
Maternal mortality ratio, 1990, 2013 (deaths per 100 000 live births)	580	200
Antenatal care visit, at least one visit, 1997, 2010 (% of women with live births)	75.8	83.1

Infant, child and maternal mortality rates, 1990-2013



Population living with HIV		
Total adults, number, 2012	-	2E+05
AIDS deaths, number, 1990, 2001	200	9800
HIV prevalence rate (% pop. 15-49 yrs), 1990, 2012	0.2	0.6

Total health expenditure		
% of GDP, 1995, 2012	2.14	1.79
Current PPP dollars per capita, 1995, 2012	8.58	24.72
General government health expenditure		
% of government expenditure, 1995, 2012	4.14	1.5
Current PPP dollars per capita, 1995, 2011	1.75	3.61

Education

Net enrolment in primary *	-	-
Net enrolment in secondary, * 1999, 2010	28.7	47.0
Gross enrolment in tertiary, * 2011 * (% of respective school age population)	-	13.8
Adult literacy rate (% of pop. aged 15 yrs and above)		
Female, 2000, 2012	86.4	90.5
Male, 2000, 2012	93.9	95.0
Public expenditure on education		
% of GDP, 1995, 2011	1.2	0.8
% of total government expenditure, 1999, 2011	2.1	4.4
Public expenditure per pupil (% of GDP per capita)		
Primary, 2003	-	2.7
Secondary, 2003	-	2.9
Tertiary, 2011	-	11.8
Gross domestic expenditure on research/development		
% of GDP, 1997, 2002	0.1	0.2
Current PPP dollars per capita	-	-

Air pollution and climate change

Greenhouse gas emissions			
Million tons of CO ₂ equivalent, 1990, 2010	875.3	361.5	
% change per annum, 1990-1995, 2010	1.5	5.1	
Tons of CO ₂ equiv. per capita, 1990, 2010	20.8	7.0	
Tons of CO ₂ equiv. per \$1000 GDP, 1990, 2010	169.3	8.6	
CO ₂ emissions from fuel combustion			
Million tons of CO ₂ equivalent, 1990, 2011	4.1	8.3	
% change per annum, 1990, 2011	-6.7	2.7	
Tons of CO ₂ equiv. per capita, 1990, 2011	0.1	0.2	
Grams of CO ₂ equiv. per \$1 GDP	-	-	

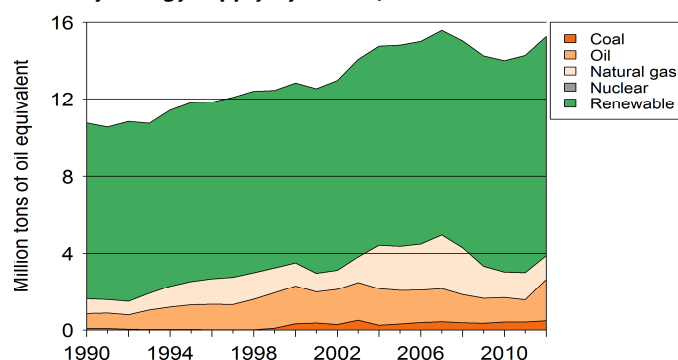
Water

Renewable water available, 1992, 2012	26899	22122
Domestic water withdrawal, 2000, 2000 (m ³ per capita per annum)	68.6	68.6

Energy

Total primary energy supply (TPES) (kg of oil equivalent)		
Per capita, 1990, 2012	253.5	289.2
Per 1 000 GDP 2005 PPP dollars	-	-
Renewable energy (% of TPES), 1990, 2011	85.4	77.5

Primary energy supply by source, 1990-2012



Biodiversity

Areas protected		
Marine (% of territorial water), 1990, 2012	0.2	0.2
Terrestrial (% of surface area), 1990, 2012	3.0	7.3
Forest (% of land area), 1990, 2012	60.0	47.7

Natural disasters

Deaths (number per annum), 1991, 2013	23.0	23.0
People affected (1 000 per annum), 1991, 2013	360.1	73.3
Economic damages (% of GDP), 1991, 2013	1.5	0.0

Connectivity

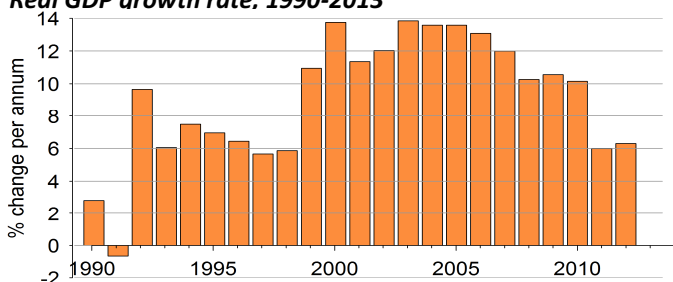
Mobile cellular subscriptions,* 1990, 2013	0.0	12.8
Internet users,* 1990, 2013	0.0	1.2
Fixed broadband internet subscribers,* 2000, 2013 * (per 100 population)	0.0	0.2

Railway density, 1990	5.1	-
Road density, 1990, 2010	38.3	52.6
Km of railway/road per 1 000 km ² land area		
Paved roads (% of roads), 1990, 2005	10.9	11.9
Passenger cars (per 1 000 pop.), 2000, 2011	3.8	5.4
Road traffic deaths (per 100 000 pop.), 2010	-	15.0

Economic growth

Gross domestic product (GDP)		
Constant, billion 2005 USD, 1990, 2012	3.3	22.9
Current USD per capita, 1990, 2012	122.8	1126
2005 PPP per capita	-	-

Real GDP growth rate, 1990-2013



Employment

Employment-to-population ratio		
% Population aged 15 and above, 1991, 2012	72.1	75.4
% Female aged 15 and above, 1991, 2012	68.6	71.8
% Male aged 15 and above, 1991, 2012	75.9	79.2
Unemployment rate (% of labour force), 1991, 2012		
Female, 1991, 2012	5.3	4.5
Male, 1991, 2012	4.2	3.7
Youth unemployment rate		
% of labour force aged 15-24, 1991, 2012	11.6	11.5

Fiscal balance

Government revenue (% of GDP), 1990, 2013	9.6	23.6
Government expenditure (% of GDP), 1990, 2013	12.4	29.2

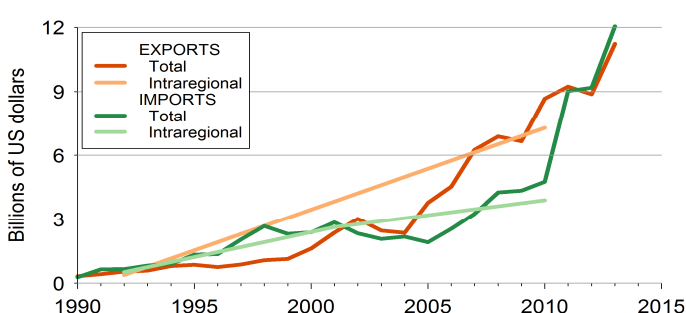
Monetary measures

Inflation rate (% per annum), 1990, 2013	17.6	5.5
Exchange rate against USD, 1990-2000, 2013 (% change per annum)	0.3	45.7

International trade

Exports of merchandise (% of GDP), 1990, 2013	6.3	17.7
Imports of merchandise (% of GDP), 1990, 2013	5.2	19.0
Exports of services (% of GDP), 1990, 2011	1.8	1.0
Imports of services (% of GDP), 1990, 2011	1.4	1.9

Total and intraregional exports and imports, 1990-2013



International financing

FDI inflows (% of GDP), 1990, 2012	4.4	3.8
FDI outflows (% of GDP)	-	-
ODA received (% of GDP), 1990, 2012	3.1	0.8
Personal remittances rec'd (% of GDP), 1990, 2011	0.1	0.2
Net external debt (% of GDP), 1990, 2012	90.6	4.3