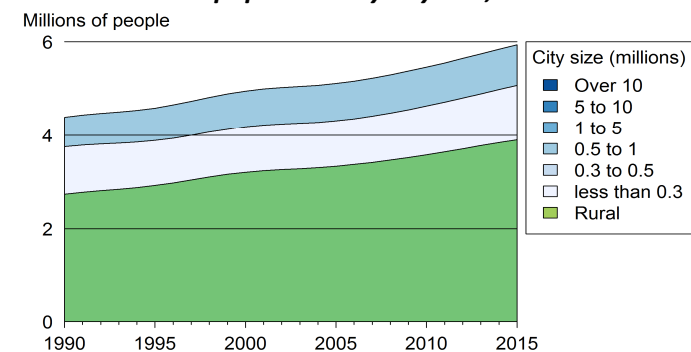


Kyrgyzstan

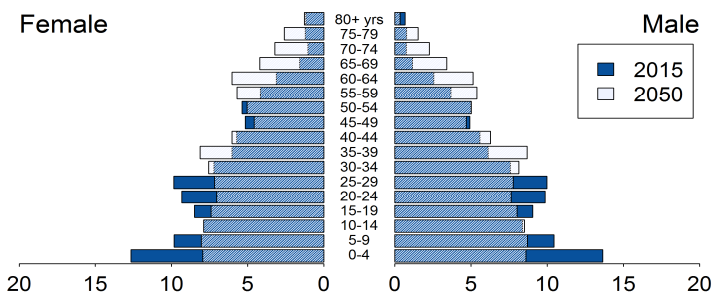
Demographic trends

Population size (millions), 1990, 2015	4.4	5.9
Average annual growth rate (%), 1990, 2015	1.2	1.6
Urban population (% of pop.), 1990, 2015	37.8	34.3
in cities over 1 million people	0.0	0.0
in cities from 0.3 to 1 million people	14.5	14.6
in cities < 0.3 million people	23.3	19.7
Population density (pop. per km ²), 1992, 2012	22.4	28.2
Foreign population (% of pop.), 1990, 2013	14.2	4.1
Net migration rate (migrants per 1 000 pop.)	-12.1	-4.0
Life expectancy at birth (in years)	66.3	70.3
Total fertility rate, 1990, 2015 (Live births per woman)	3.9	3.1
Adolescent fertility rate (Live births per 1 000 women aged 15-19 years)	68.3	41.6

Rural and urban population by city size, 1990 to 2015



Population age structure, 2015 and 2050



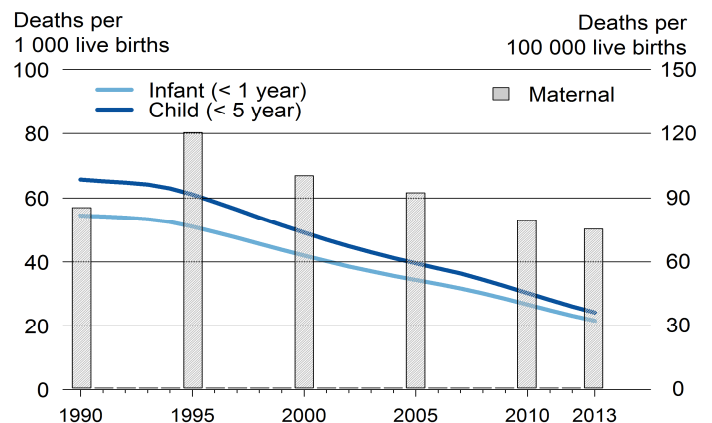
Poverty and inequalities

Population living in poverty (% of population)		
below 1.25 dollars (2005 PPP) a day, 1993, 2011	18.6	5.1
below 2 dollars (2005 PPP) a day, 1993, 2011	30.1	21.1
below national poverty line, 2013	-	37.0
Gini index (income equality coefficient), 1993, 2011	53.7	33.4
Population with access to		
Improved water sources (% of pop.)		
Rural, 1990, 2015	62	86
Urban, 1990, 2015	96	97
Improved sanitation (% of pop.)		
Rural, 1990, 2015	90	96
Urban, 1990, 2015	93	89

Health

Mortality rate (deaths per 1 000 live births)		
Infant, 1990, 2013	54.5	21.6
Under-five, 1990, 2013	65.7	24.2
Children under-five underweight (%), 1997, 2012	10.4	3.4
Maternal mortality ratio, 1990, 2013 (deaths per 100 000 live births)	85	75
Antenatal care visit, at least one visit, 1997, 2014 (% of women with live births)	97.3	98.4

Infant, child and maternal mortality rates, 1990 to 2013



Population living with HIV

Total adults, number, 1990, 2013	102	8021
AIDS deaths, number, 1990, 2013	3.0	327
HIV prevalence rate (% pop. 15-49 yrs), 1990, 2013	0.0	0.2

Total health expenditure

% of GDP, 1995, 2013	6	6.7
Current PPP dollars per capita, 1995, 2012	59.4	175.1
General government health expenditure		
% of government expenditure, 1995, 2013	10.7	13.2
Current PPP dollars per capita, 1995, 2011	39.4	95.9

Education

Gross enrolment (% of respective school age population)		
Primary education	-	-
Secondary education	-	-
Tertiary education, 1999, 2013	29.2	47.6
Adult literacy rate (% of pop. aged 15 yrs and above)		
Female, 1999, 2015	98.1	99.4
Male, 1999, 2015	99.3	99.6
Public expenditure on education		
% of GDP, 1994, 2012	5.6	7.4
% of total government expenditure, 2000, 2012	11.6	18.2
Public expenditure per pupil (% of GDP per capita)		
Primary	-	-
Secondary	-	-
Tertiary, 1998, 2010	36.1	18.9
Gross domestic expenditure on research/development		
% of GDP, 1999, 2011	0.2	0.2
Current PPP dollars per capita, 1999, 2011	2.7	4.5

Air pollution and climate change

Greenhouse gas emissions

Million tons CO ₂ -e _q , 1990, 2012	33.3	13.8
% change per annum, 1990, 2012	106.6	-0.4
Tons CO ₂ -e _q , per capita, 1990, 2012	7.6	2.4
Tons CO ₂ -e _q /1 000 US dollars GDP, 1990, 2012	12.8	2.1

CO₂ emissions from fuel combustion

Million tons CO ₂ -e _q , 1990, 2013	22.8	8.9
% change per annum, 1991, 2012	-10.2	32.1
Tons CO ₂ -e _q , per capita, 1990, 2013	5.2	1.5
Grams CO ₂ -e _q /US dollar GDP, 1990, 2013	7420.3	2483.0

Water

Renewable water available *, 1992, 2014	5 276	4 042
Domestic water withdrawal *, 1994, 2006	66.2	43.4

* (m³ per capita per annum)

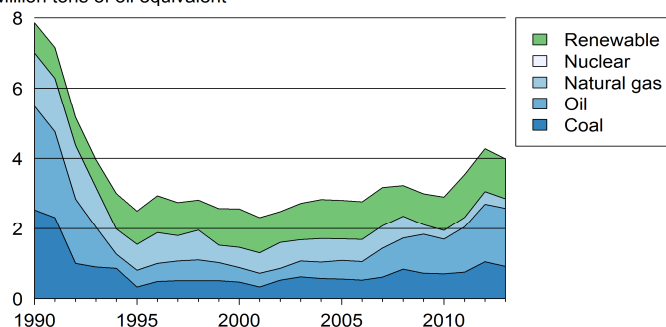
Energy

Total primary energy supply (TPES) (kg of oil equivalent)

Per capita, 1990, 2013	1703.5	687.3
Per 1 000 GDP 2005 US dollars, 1990, 2013	2439.6	1104.2
Renewable energy (% of TPES), 1990, 2012	11.5	29.6

Primary energy supply by source, 1990 to 2013

Million tons of oil equivalent



Biodiversity

Areas protected

Marine (% of territorial water), 1990, 2014	0.0	0.0
Terrestrial (% of surface area), 1990, 2014	6.3	6.9
Forest (% of land area), 1992, 2012	4.4	5.1

Natural disasters

Deaths (number per annum), 1992, 2014	58	0
People affected (1 000 per annum), 1992, 2014	104	0
Economic damages (% of GDP), 1992, 2014	7.4	0.0

Connectivity

Mobile cellular subscriptions,* 2000, 2014	0.2	129.4
Internet users,* 2000, 2014	1.0	28.3
Fixed broadband internet subscribers,* 2014	-	4.0

* (per 100 population)

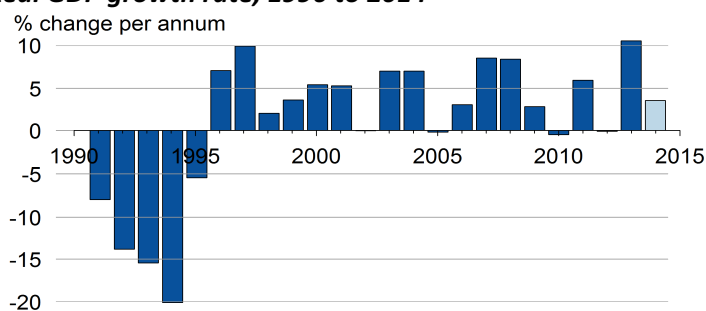
Railway density, 2012	-	2.2
Road density, 2000, 2007	96.5	177.3
Km of railway/road per 1 000 km ² land area		
Paved roads (% of roads), 1990, 2000	90.0	91.0
Passenger cars (per 1 000 pop.), 2000, 2010	38.8	62.9
Road traffic deaths (per 100 000 pop.), 2013	-	22.0

Economic growth

Gross domestic product (GDP)

Constant, billion 2005 US dollars, 1990, 2014	3.1	3.7
Current US dollars per capita, 1990, 2013	594	1 258
2011 PPP per capita, 1990, 2013	3 472	3 096

Real GDP growth rate, 1990 to 2014 ^{1/}



^{1/} 2014: World Bank estimates

Employment

Employment-to-population ratio

% Population aged 15 and above, 1991, 2013	60.5	60.1
% Female aged 15 and above, 1991, 2013	52.8	49.4
% Male aged 15 and above, 1991, 2013	68.7	71.4
Unemployment rate (% of labour force), 1991, 2013	8.4	8
Female, 1991, 2013	9.4	9.2
Male, 1991, 2013	7.5	7.2

Youth unemployment rate

% of labour force aged 15-24, 1991, 2013	15.6	15.6
--	------	------

Fiscal balance

Government revenue (% of GDP), 1990, 2013	26.8	26.5
Government expenditure (% of GDP), 1990, 2013	37.1	29.8

Monetary measures

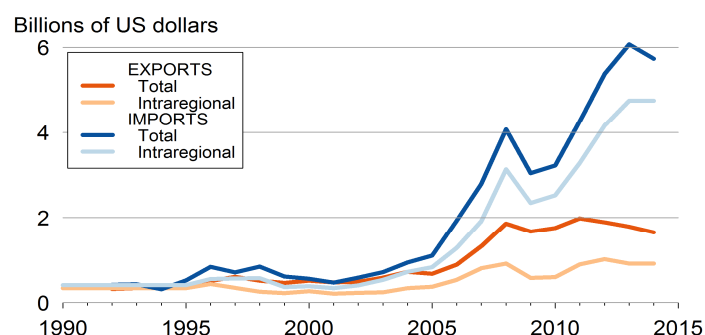
Inflation rate (% per annum), 1996, 2014	31.9	7.5
Exchange rate against US dollar, 1995, 2014	-0.2	10.8

(% change per annum)

International trade

Exports of merchandise (% of GDP), 1992, 2014	14.5	22.0
Imports of merchandise (% of GDP), 1992, 2014	19.1	76.6
Exports of services (% of GDP), 2014	-	11.9
Imports of services (% of GDP), 2014	-	16.3

Total and intraregional exports and imports, 1990 to 2013



International financing

FDI inflows (% of GDP), 1992, 2014	0.0	2.8
FDI outflows (% of GDP), 1992, 2014	0.0	0.0
ODA received (% of GDP), 1992, 2013	1.0	7.4
Personal remittances rec'd (% of GDP), 1993, 2014	0.1	30.0
Net external debt (% of GDP), 1992, 2013	0.3	94.2