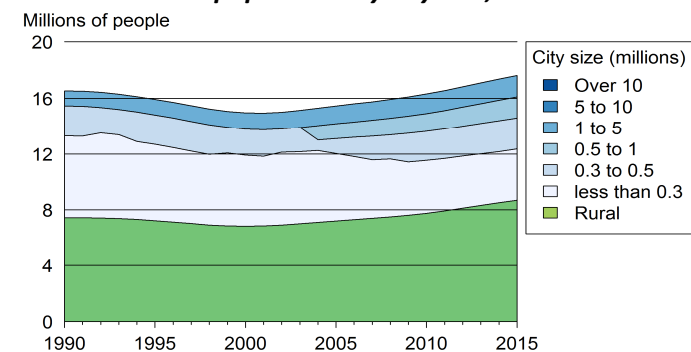


Kazakhstan

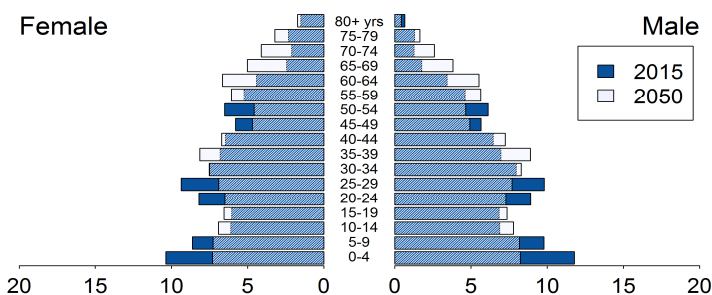
Demographic trends

Population size (millions), 1990, 2015	16.5	17.6
Average annual growth rate (%), 1990, 2015	0.1	1.4
Urban population (% of pop.), 1990, 2015	55.0	50.7
in cities over 1 million people	6.5	8.6
in cities from 0.3 to 1 million people	13.0	21.2
in cities < 0.3 million people	35.5	20.9
Population density (pop. per km ²), 1992, 2012	6.0	6.2
Foreign population (% of pop.), 1990, 2013	22.4	21.1
Net migration rate (migrants per 1 000 pop.)	-18.6	1.9
Life expectancy at birth (in years)	65.5	69.1
Total fertility rate, 1990, 2015 (Live births per woman)	2.8	2.6
Adolescent fertility rate (Live births per 1 000 women aged 15-19 years)	53.7	31.4

Rural and urban population by city size, 1990 to 2015



Population age structure, 2015 and 2050



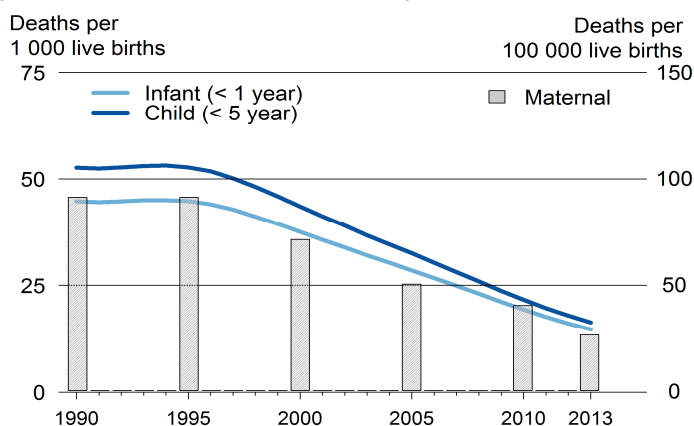
Poverty and inequalities

Population living in poverty (% of population)		
below 1.25 dollars (2005 PPP) a day, 1993, 2010	4.2	0.1
below 2 dollars (2005 PPP) a day, 1993, 2010	17.6	0.8
below national poverty line, 2013	-	2.9
Gini index (income equality coefficient), 1993, 2010	32.7	28.6
Population with access to		
Improved water sources (% of pop.)		
Rural, 1990, 2015	90	86
Urban, 1990, 2015	97	99
Improved sanitation (% of pop.)		
Rural, 1990, 2015	97	98
Urban, 1990, 2015	96	97

Health

Mortality rate (deaths per 1 000 live births)		
Infant, 1990, 2013	44.7	14.6
Under-five, 1990, 2013	52.6	16.3
Children under-five underweight (%), 1995, 2010	4.4	3.7
Maternal mortality ratio, 1990, 2013 (deaths per 100 000 live births)	91	26
Antenatal care visit, at least one visit, 1995, 2011 (% of women with live births)	92.5	99.2

Infant, child and maternal mortality rates, 1990 to 2013



Population living with HIV

Total adults, number	-	-
AIDS deaths, number	-	-
HIV prevalence rate (% pop. 15-49 yrs)	-	-

Total health expenditure

% of GDP, 1995, 2013	4.6	4.3
Current PPP dollars per capita, 1995, 2012	171.9	607.6
General government health expenditure		
% of government expenditure, 1995, 2013	11.5	10.9
Current PPP dollars per capita, 1995, 2011	107.4	309.1

Education

Gross enrolment (% of respective school age population)		
Primary education	-	-
Secondary education	-	-
Tertiary education, 1999, 2013	24.9	55.3
Adult literacy rate (% of pop. aged 15 yrs and above)		
Female, 1999, 2015	99.3	99.8
Male, 1999, 2015	99.8	99.8
Public expenditure on education		
% of GDP, 1995, 2009	4.0	3.1
% of total government expenditure, 2009	-	13.0
Public expenditure per pupil (% of GDP per capita)		
Primary	-	-
Secondary	-	-
Tertiary, 2006	-	7.5
Gross domestic expenditure on research/development		
% of GDP, 1999, 2013	0.2	0.2
Current PPP dollars per capita, 1999, 2013	12.4	40.4

Air pollution and climate change

Greenhouse gas emissions

Million tons CO ₂ -e _q , 1990, 2012	372.3	366.5
% change per annum, 1990, 2012	54.1	4.6
Tons CO ₂ -e _q per capita, 1990, 2012	22.5	21.8
Tons CO ₂ -e _q /1 000 US dollars GDP, 1990, 2012	12.5	1.8

CO₂ emissions from fuel combustion

Million tons CO ₂ -e _q , 1990, 2013	237.2	244.9
% change per annum, 1991, 2012	3.9	-2.2
Tons CO ₂ -e _q per capita, 1990, 2013	14.4	14.3
Grams CO ₂ -e _q /US dollar GDP, 1990, 2013	4723.1	2647.9

Water

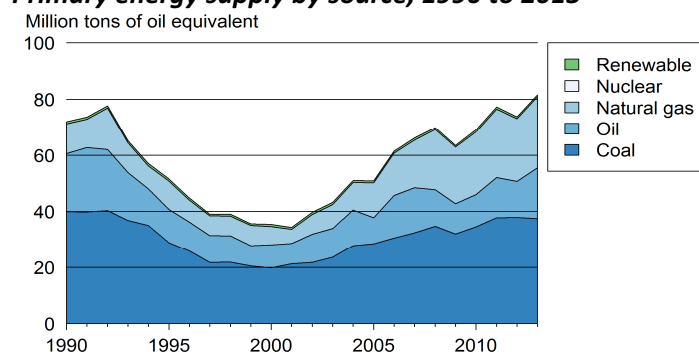
Renewable water available *, 1992, 2014	6 596	6 240
Domestic water withdrawal *, 1995, 2010	36.6	53.8
* (m ³ per capita per annum)		

Energy

Total primary energy supply (TPES) (kg of oil equivalent)

Per capita, 1990, 2013	4443.4	4768.7
Per 1 000 GDP 2005 US dollars, 1990, 2013	1462.3	881.7
Renewable energy (% of TPES), 1990, 2012	1.0	1.0

Primary energy supply by source, 1990 to 2013



Biodiversity

Areas protected

Marine (% of territorial water), 1990, 2014	0.0	0.0
Terrestrial (% of surface area), 1990, 2014	2.4	3.3
Forest (% of land area), 1992, 2012	1.3	1.2

Natural disasters

Deaths (number per annum), 1993, 2014	10	5
People affected (1 000 per annum), 1993, 2014	30	3
Economic damages (% of GDP), 1993, 2014	0.1	0.0

Connectivity

Mobile cellular subscriptions,* 2000, 2014	1.3	161.2
Internet users,* 2000, 2014	0.7	54.9
Fixed broadband internet subscribers,* 2014	-	12.4
* (per 100 population)		

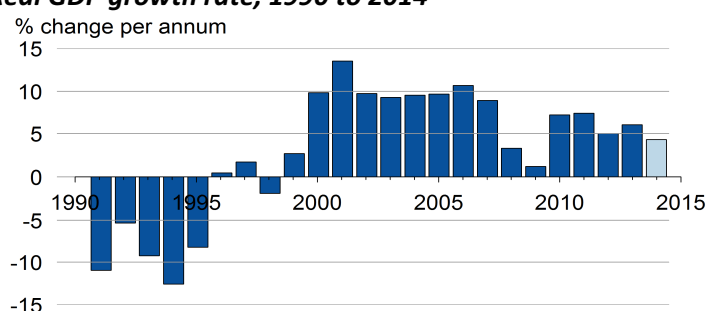
Railway density, 1992, 2012	5.3	5.3
Road density, 2011	-	36.0
Km of railway/road per 1 000 km ² land area		
Paved roads (% of roads), 1990, 2011	55.1	88.7
Passenger cars (per 1 000 pop.), 2000, 2011	67.2	214.6
Road traffic deaths (per 100 000 pop.), 2013	-	24.2

Economic growth

Gross domestic product (GDP)

Constant, billion 2005 US dollars, 1990, 2014	50.2	96.2
Current US dollars per capita, 1990, 2013	1 796	13 124
2011 PPP per capita, 1990, 2013	12 588	22 385

Real GDP growth rate, 1990 to 2014 ^{1/}



^{1/} 2014: World Bank estimates

Employment

Employment-to-population ratio

% Population aged 15 and above, 1991, 2013	61.8	65.9
% Female aged 15 and above, 1991, 2013	54.3	61.0
% Male aged 15 and above, 1991, 2013	70.2	71.3
Unemployment rate (% of labour force), 1991, 2013	9.5	5.2
Female, 1991, 2013	11.3	6.3
Male, 1991, 2013	7.9	4.1

Youth unemployment rate

% of labour force aged 15-24, 1991, 2013	15.7	4.5
--	------	-----

Fiscal balance

Government revenue (% of GDP), 1991, 2013	31.7	14.6
Government expenditure (% of GDP), 1990, 2013	35.6	20.7

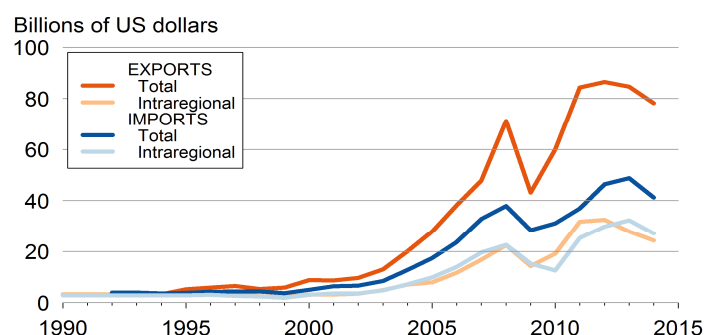
Monetary measures

Inflation rate (% per annum), 1994, 2014	1877.4	6.7
Exchange rate against US dollar, 1995, 2014	71.5	17.8
(% change per annum)		

International trade

Exports of merchandise (% of GDP), 1992, 2014	12.3	33.4
Imports of merchandise (% of GDP), 1992, 2014	15.0	17.6
Exports of services (% of GDP), 2014	-	2.7
Imports of services (% of GDP), 2014	-	5.4

Total and intraregional exports and imports, 1990 to 2013



International financing

FDI inflows (% of GDP), 1992, 2014	0.4	4.1
FDI outflows (% of GDP), 1992, 2014	0.0	1.5
ODA received (% of GDP), 1991, 2013	0.4	0.0
Personal remittances rec'd (% of GDP), 1995, 2013	0.6	0.1
Net external debt (% of GDP), 1992, 2013	0.1	66.2