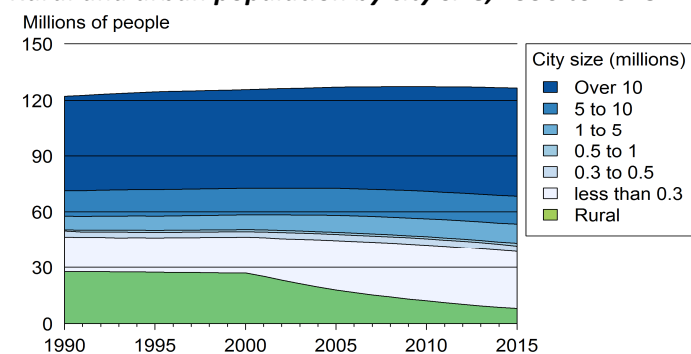


Japan

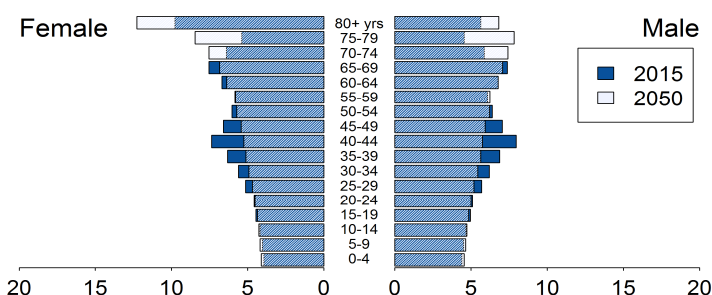
Demographic trends

Population size (millions), 1990, 2015	122.2	126.6
Average annual growth rate (%), 1990, 2015	0.4	-0.2
Urban population (% of pop.), 1990, 2015	77.3	93.7
in cities over 1 million people	58.8	65.9
in cities from 0.3 to 1 million people	3.2	3.7
in cities < 0.3 million people	15.3	24.1
Population density (pop. per km ²), 1990, 2012	323.6	336.4
Foreign population (% of pop.), 1990, 2013	0.9	1.9
Net migration rate (migrants per 1 000 pop.)	0.7	0.6
Life expectancy at birth (in years)	79.4	83.3
Total fertility rate, 1990, 2015 (Live births per woman)	1.6	1.4
Adolescent fertility rate (Live births per 1 000 women aged 15-19 years)	4.0	4.5

Rural and urban population by city size, 1990 to 2015



Population age structure, 2015 and 2050



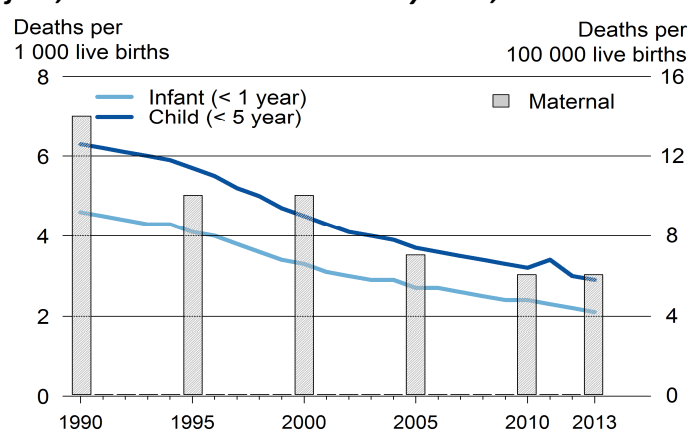
Poverty and inequalities

Population living in poverty (% of population)		
below 1.25 dollars (2005 PPP) a day	-	-
below 2 dollars (2005 PPP) a day	-	-
below national poverty line	-	-
Gini index (income equality coefficient), 2008	-	32.1
Population with access to		
Improved water sources (% of pop.)		
Rural, 1990, 2015	100	100
Urban, 1990, 2015	100	100
Improved sanitation (% of pop.)		
Rural, 1990, 2015	100	100
Urban, 1990, 2015	100	100

Health

Mortality rate (deaths per 1 000 live births)		
Infant, 1990, 2013	4.6	2.1
Under-five, 1990, 2013	6.3	2.9
Children under-five underweight (%)	-	-
Maternal mortality ratio, 1990, 2013 (deaths per 100 000 live births)	14	6
Antenatal care visit, at least one visit (% of women with live births)	-	-

Infant, child and maternal mortality rates, 1990 to 2013



Population living with HIV

Total adults, number	-	-
AIDS deaths, number	-	-
HIV prevalence rate (% pop. 15-49 yrs)	-	-

Total health expenditure

% of GDP, 1995, 2013	6.8	10.3
Current PPP dollars per capita, 1995, 2012	1556.6	3577.7
General government health expenditure		
% of government expenditure, 1995, 2013	15.5	20
Current PPP dollars per capita, 1995, 2011	1278.8	2539.6

Education

Gross enrolment (% of respective school age population)		
Primary education	-	-
Secondary education	-	-
Tertiary education, 1999, 2012	46.6	61.5
Adult literacy rate (% of pop. aged 15 yrs and above)		
Female	-	-
Male	-	-
Public expenditure on education		
% of GDP, 1993, 2013	3.5	3.8
% of total government expenditure, 1998, 2013	10.2	9.6
Public expenditure per pupil (% of GDP per capita)		
Primary, 1998, 2012	19.8	23.8
Secondary, 1998, 2012	19.8	25.8
Tertiary, 1998, 2012	13.1	25.5
Gross domestic expenditure on research/development		
% of GDP, 1999, 2013	3.0	3.5
Current PPP dollars per capita, 1999, 2013	739.3	1261.9

Air pollution and climate change

Greenhouse gas emissions

Million tons CO ₂ -e _{q.} , 1990, 2012	1304.7	1478.9
% change per annum, 1990, 2012	7.2	5.9
Tons CO ₂ -e _{q.} per capita, 1990, 2012	10.7	11.6
Tons CO ₂ -e _{q.} /1 000 US dollars GDP, 1990, 2012	0.4	0.2

CO₂ emissions from fuel combustion

Million tons CO ₂ -e _{q.} , 1990, 2013	1049.3	1235.1
% change per annum, 1990, 2012	7.8	3.4
Tons CO ₂ -e _{q.} per capita, 1990, 2013	8.6	9.7
Grams CO ₂ -e _{q.} /US dollar GDP, 1990, 2013	272.4	259.1

Water

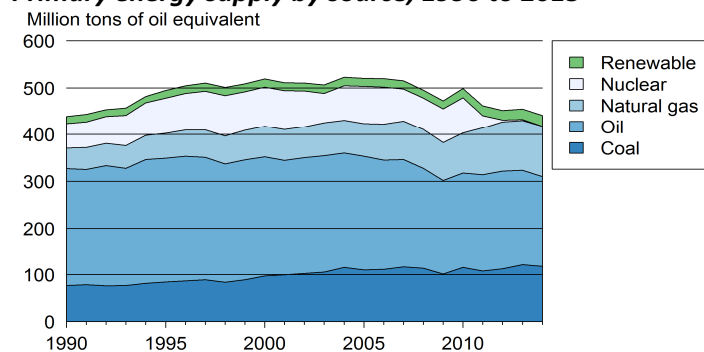
Renewable water available *, 1992, 2014	3 491	3 391
Domestic water withdrawal *, 1992, 2009	138.0	121.0
* (m ³ per capita per annum)		

Energy

Total primary energy supply (TPES) (kg of oil equivalent)

Per capita, 1990, 2014	3593.1	3479.4
Per 1 000 GDP 2005 US dollars, 1990, 2013	114.1	95.4
Renewable energy (% of TPES), 1990, 2013	3.4	4.3

Primary energy supply by source, 1990 to 2013



Biodiversity

Areas protected

Marine (% of territorial water), 1990, 2014	5.0	5.1
Terrestrial (% of surface area), 1990, 2014	18.1	19.4
Forest (% of land area), 1990, 2012	68.4	68.6

Natural disasters

Deaths (number per annum), 1990, 2014	67	273
People affected (1 000 per annum), 1990, 2014	148	39
Economic damages (% of GDP), 1990, 2014	0.2	0.1

Connectivity

Mobile cellular subscriptions,* 2000, 2014	53.1	120.4
Internet users,* 2000, 2014	30.0	90.6
Fixed broadband internet subscribers,* 2000, 2014	0.7	29.4
* (per 100 population)		

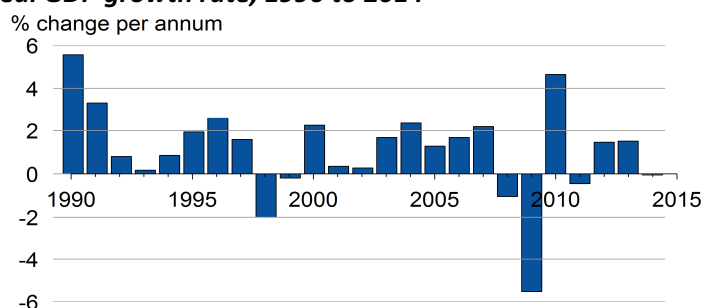
Railway density, 1990, 2012	55.6	55.2
Road density, 1990, 2011	684.6	930.0
Km of railway/road per 1 000 km ² land area		
Paved roads (% of roads), 1990	69.2	-
Passenger cars (per 1 000 pop.), 2000, 2011	403.7	454.9
Road traffic deaths (per 100 000 pop.), 2013	-	4.7

Economic growth

Gross domestic product (GDP)

Constant, billion 2005 US dollars, 1990, 2014	3851.3	4780.9
Current US dollars per capita, 1990, 2013	25 388	38 576
2011 PPP per capita, 1990, 2013	29 860	35 713

Real GDP growth rate, 1990 to 2014 ^{1/}



^{1/} 2014: World Bank estimates

Employment

Employment-to-population ratio

% Population aged 15 and above, 1991, 2013	62.4	56.9
% Female aged 15 and above, 1991, 2013	49.5	47.1
% Male aged 15 and above, 1991, 2013	76.1	67.4
Unemployment rate (% of labour force), 1991, 2013	2.1	4
Female, 1991, 2013	2.2	3.7
Male, 1991, 2013	2	4.3
Youth unemployment rate		
% of labour force aged 15-24, 1991, 2013	4.6	6.8

Fiscal balance

Government revenue (% of GDP), 1990, 2012	15.3	11.3
Government expenditure (% of GDP), 1990, 2012	15.7	19.3

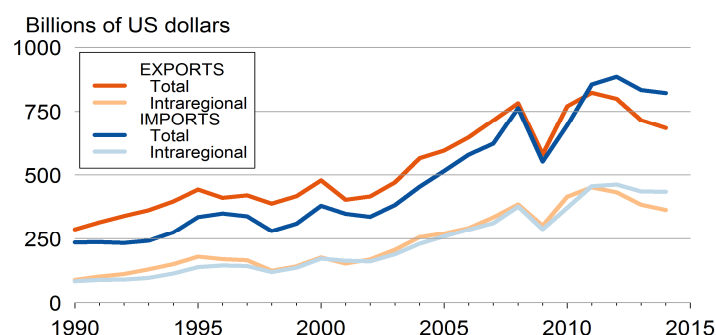
Monetary measures

Inflation rate (% per annum), 1990, 2014	3.0	2.7
Exchange rate against US dollar, 1990, 2014	4.9	8.6
(% change per annum)		

International trade

Exports of merchandise (% of GDP), 1990, 2014	9.3	14.0
Imports of merchandise (% of GDP), 1990, 2014	7.6	16.8
Exports of services (% of GDP), 2014	-	3.2
Imports of services (% of GDP), 2014	-	3.9

Total and intraregional exports and imports, 1990 to 2013



International financing

FDI inflows (% of GDP), 1990, 2014	0.1	0.0
FDI outflows (% of GDP), 1990, 2014	1.6	2.3
ODA received (% of GDP)	-	-
Personal remittances rec'd (% of GDP), 1991, 2014	0.0	0.1
Net external debt (% of GDP)	-	-