



ICT and risk informed decision making for resilient development

Asian Disaster Preparedness Center

Why focus on development?


- Disasters set back development programming, destroying years of development initiatives.
- Development programs can increase an area's susceptibility to disasters.
- Development programs can be designed to decrease the susceptibility to disasters and their negative consequences.
- Rebuilding after a disaster provides significant opportunities to initiate development programs.



ADPC's work in the region

Sharing risk information in Nepal




<http://drm.moha.gov.np/>



Government of Nepal
Ministry of Home Affairs
Singha Durbar, Kathmandu, Nepal

[Sign in](#) [?](#)

HOMELAYERSMAPSDOCUMENTSPEOPLESEARCH



WELCOME TO NEPAL GOVERNMENT GEO-PORTAL

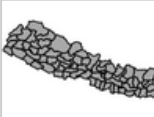
Nepal officially known as the Democratic Republic of Nepal is a landlocked sovereign country located in South Asia. It has an area of 147,181 square kilometres and a population of approximately 2.7 crores (27 million). It is located in the Himalayas and bordered to the north by the People's Republic of China, and to the south, east, and west by the Republic of India. Kathmandu is the capital of the country and the most populous city of the country.

Explore Layers


Explore Maps

LATEST LAYERS


Total: 15



[admin_district_1](#)
Layer from moha, 9 months, 1 week ago
No abstract provided
81 views
Average rating (0 votes)
[Download](#) [Create a map](#)

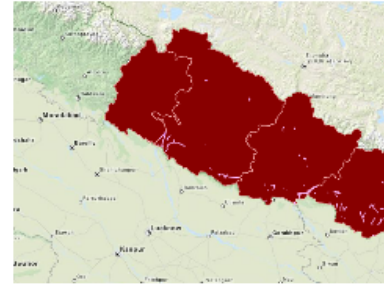


[admin_development_region_1](#)
Layer from moha, 9 months, 1 week ago
No abstract provided
69 views
Average rating (0 votes)
[Download](#) [Create a map](#)



[admin_development_region](#)
Layer from moha, 9 months, 1 week ago
No abstract provided

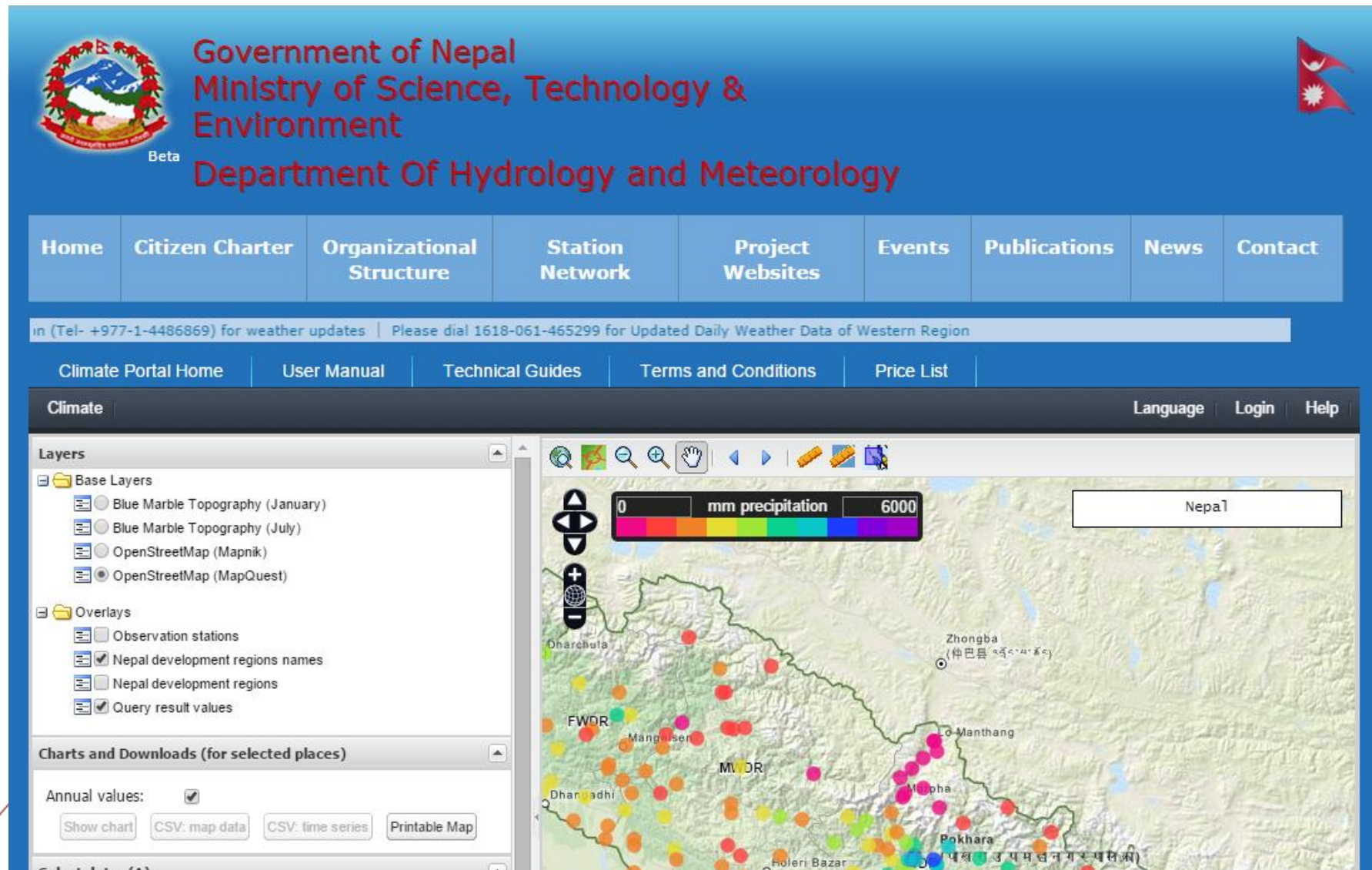
LATEST MAPS



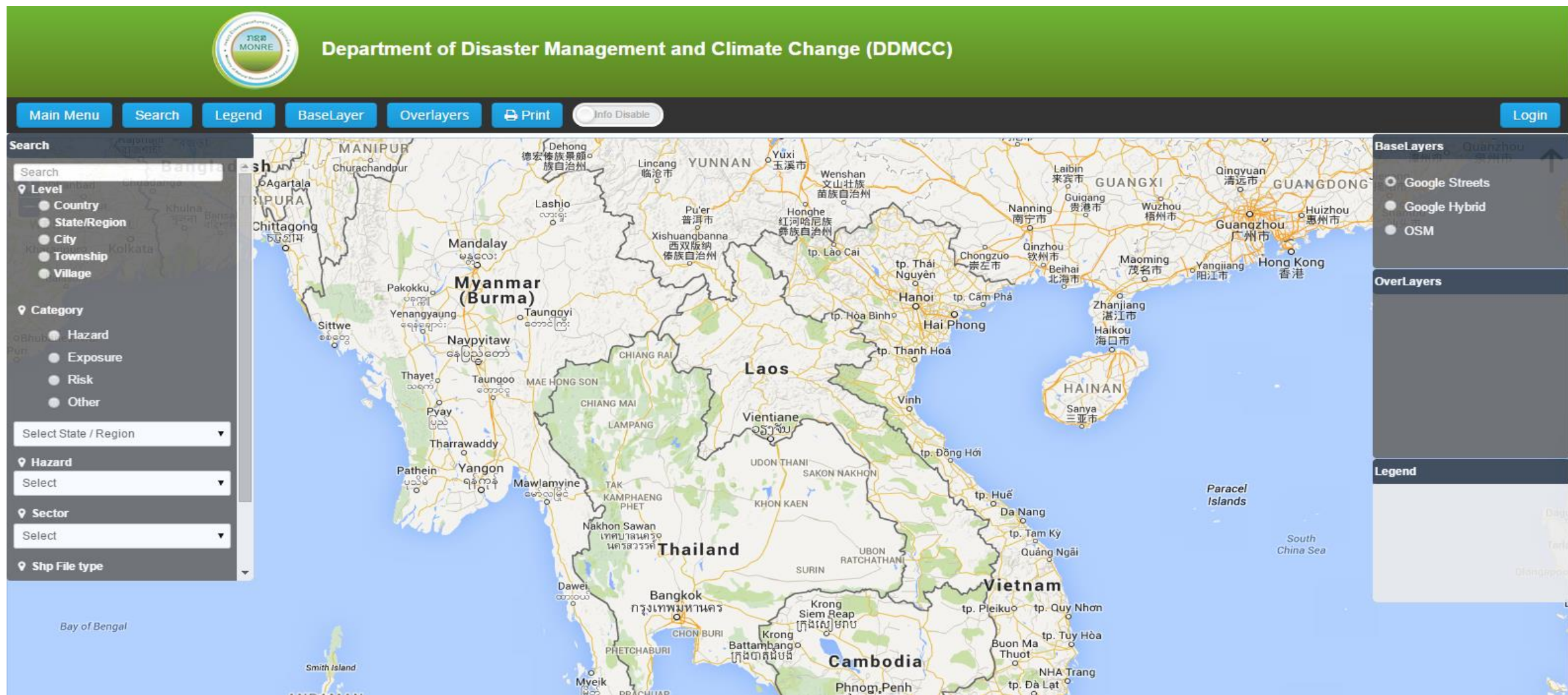
[Nepal Water Area](#)
Map from demo, 8 months, 3 weeks ago
130 views
Average rating (0 votes)
[Download](#) [View](#)

Nepal climate data portal

www.dhm.gov.np/dpc/



Geo spatial risk information sharing platform in Lao PDR



SERVIR-Mekong

<http://servir.adpc.net/>

Goal: To enhance climate change adaptation and landscape management in the Lower Mekong region through the increased application of geospatial analysis to policy and planning needs



OBJECTIVE

Build technical capacity to use geospatial analysis for decision making and planning.

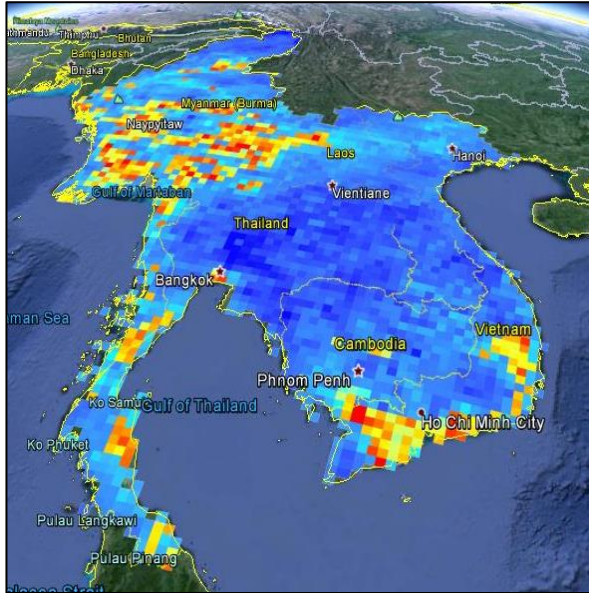
Improve the sharing of data and tools.

Develop user-tailored data and tools to address on-the-ground priorities

Ensure the sustainability of SERVIR-Mekong as a resource for the region

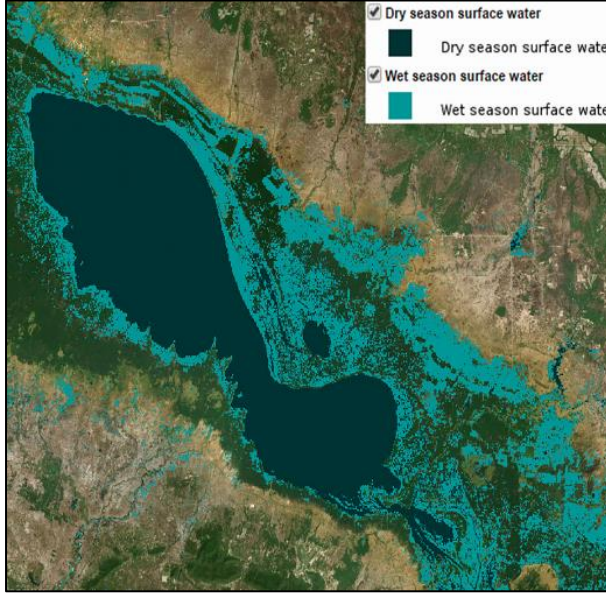
Program Duration:
Sept 2014 to Sept 2019

Geospatial Tools/Data for Disaster Risk Management from SERVIR-Mekong



Regional Drought Monitoring

- Monitor and forecast drought
- Estimate impacts on crop yields



Surface Water Mapping

- Analyze trends of wet/dry areas
- Analyze river course changes



Virtual Rain and River Gauge

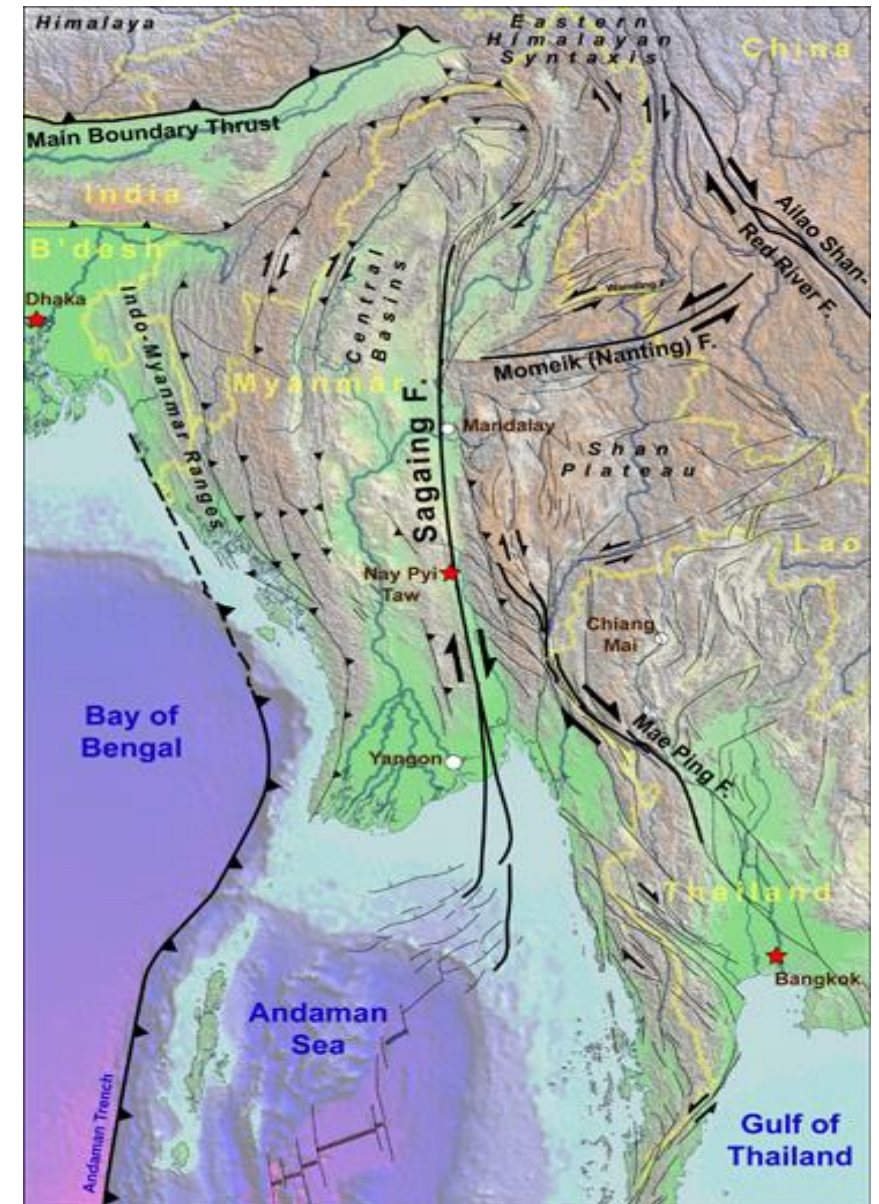
- Provide rain and stream height data
- Improve flood warning

Future Tools

- Real-time flood monitoring
- Severe thunderstorm warning

Earthquake risks in Mandalay

- Mandalay lies along the Sagaing fault in Myanmar
- Saging fault was the cause of 13 of 17 major EQs in the past 172 years and has been mostly quiet for the past 75 years
- Pre-1988, most major structures were designed without seismic resistance
- Soil investigation, an initial step in earthquake preparedness, was not mandatory in pre-1999



Utilizing risk information in Mandalay



- Risk-sensitive land use planning guidelines in Mandalay has been generated for local authority to implement
- City and household-level emergency response planning developed for the authority to reduce community risks
- At risk buildings have been identified to be retrofitted by the local authority



Challenges and priorities

Priorities

- Improving understanding of disaster risk
- Provide access to risk information
- Strengthening the ability of governments and institutions to manage disaster risk
- Capacity building of sub-national level officials
- Need for greater gender inclusivity
- Improving coordination among relevant domestic and regional agencies
- More financial resources to ensure the long-term sustainability initiatives
- Fostering greater private sector engagement

What's next?

- Sharing of risk information through national platform
- Application of risk information into sectoral development plans
- Utilization of space technology
- Use of social media for emergency preparedness
- Private sector engagement



**2016
AMCDRR**

Adopted 'New Delhi Declaration' and
'Asian Regional Plan for
Implementation of the Sendai
Framework'

Regional Plan: A Unique Approach



Greater
congruence with
sustainable
development



Regional
cooperation



Action oriented



Focus on early
warning



Enhanced
stakeholder groups
engagement



Emphasis on
understanding risk



private sector
partnerships



Increased
participation and
leadership of
women

ADPC vision:

**Safer communities and sustainable
development through disaster risk reduction**

Our Locations

- Bangkok, **Thailand**
- Dhaka, **Bangladesh**
- Yangon, **Myanmar**



Our Approach

Science, System, Application



- ADPC uses science-based approaches to **identify**, **quantify** and **understand** risk
- Strengthening **effective governance** systems for managing disaster and climate risks and **institutionalizing** disaster risk management
- Incorporating disaster risk reduction into **development processes**

Training

- Over **30 years** of experience
- Extensive portfolio of training courses serving **26 countries in Asia-Pacific**
- Over **14,000 graduates** from ADPC regional training worldwide
- **Alumni network** includes government officials, practitioners, development partners and media professionals



Regional Consultative Committee on Disaster Management

- Established in 2000
- 26 Member Countries
- Leading regional mechanism on disaster risk management in Asia-Pacific
- Provide opportunity for regional and sub-regional cooperation



THANK YOU

FOR YOUR ATTENTION



<http://www.adpc.net>



<http://www.drrprojects.net>



Group: Asian Disaster Preparedness Center



@ADPCnet