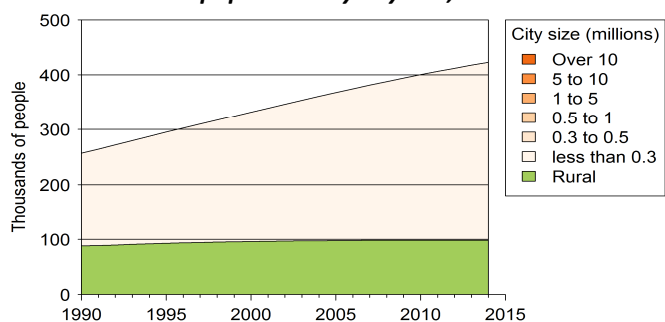




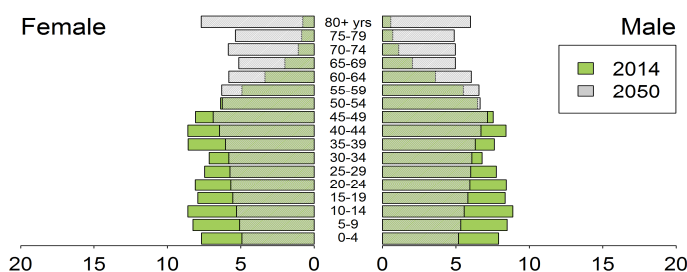
## Demographic trends

Population size (thousands), 1990, 2014	256.9	423.2
Average annual growth rate (%), 1990, 2014	2.9	1.3
Urban population (% of pop.), 1990, 2014	65.8	76.9
in cities over 1 million people	0.0	0.0
in cities from 0.3 to 1 million people	0.0	0.0
in cities < 0.3 million people	65.8	76.9
Population density (pop. per km <sup>2</sup> ), 1990, 2012	44.5	71.4
Foreign population (% of pop.), 1990, 2013	28.5	49.3
Net migration rate (migrants per 1 000 pop.)	0.8	0.8
Life expectancy at birth (in years), 1990, 2014	73.6	78.7
Total fertility rate, 1990, 2014 (Live births per woman)	3.5	2.0
Adolescent fertility rate, 1990-1995, 2010-2015 (Live births per 1 000 women aged 15-19 years)	44.1	23.0

### Rural and urban population by city size, 1990-2014



### Population age structure, female and male, 2014, 2050



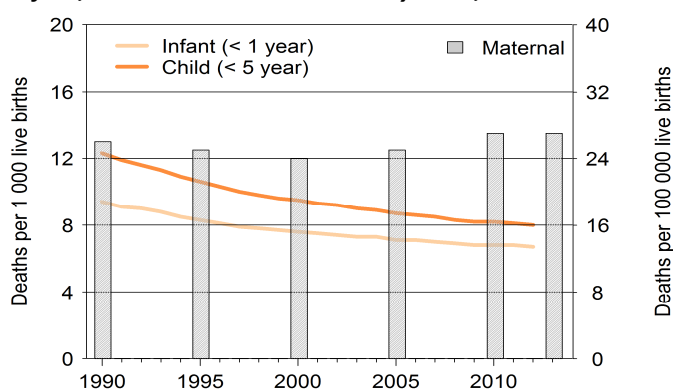
## Poverty and inequalities

Population living in poverty		
below 1.25 dollars (2005 PPP) a day	-	-
below 2 dollars (2005 PPP) a day	-	-
below national poverty line (% of population)	-	-
Gini index (income equality coefficient)	-	-
Population with access to		
Improved water sources (% of pop.)		
Rural	-	-
Urban	-	-
Improved sanitation (% of pop.)		
Rural	-	-
Urban	-	-

## Health

Mortality rate (deaths per 1 000 live births)		
Infant, 1990, 2012	9.4	6.7
Under-five, 1990, 2012	12.3	8
Children under-five underweight (%)	-	-
Maternal mortality ratio, 1990, 2013 (deaths per 100 000 live births)	26	27
Antenatal care visit, at least one visit, 1994, 2009 (% of women with live births)	100	99

### Infant, child and maternal mortality rates, 1990-2013



Population living with HIV		
Total adults, number	-	-
AIDS deaths, number	-	-
HIV prevalence rate (% pop. 15-49 yrs)	-	-

Total health expenditure		
% of GDP, 1995, 2012	2.95	2.28
Current PPP dollars per capita, 1995, 2012	1206	1218
General government health expenditure		
% of government expenditure, 1995, 2012	4.21	5.98
Current PPP dollars per capita, 1995, 2011	956.3	1102

## Education

Net enrolment in primary, * 2012	-	91.7
Net enrolment in secondary, * 2012	-	94.7
Gross enrolment in tertiary, * 1999, 2012 * (% of respective school age population)	12.0	24.3
Adult literacy rate (% of pop. aged 15 yrs and above)		
Female, 1991, 2012	82.5	93.7
Male, 1991, 2012	92.5	97.1
Public expenditure on education		
% of GDP, 1990, 2013	4.0	3.5
% of total government expenditure, 1990, 2013	8.9	9.7
Public expenditure per pupil (% of GDP per capita)		
Primary, 2010	-	5.2
Secondary, 2013	-	8.1
Tertiary, 2013	-	58.4
Gross domestic expenditure on research/development		
% of GDP, 2004	-	0.0
Current PPP dollars per capita, 2004	-	17.4

## Air pollution and climate change

### Greenhouse gas emissions

Million tons of CO <sub>2</sub> equivalent, 1990, 2010	18.4	20.2
% change per annum, 1990-1995, 2010	3.0	1.5
Tons of CO <sub>2</sub> equiv. per capita, 1990, 2010	71.5	50.4
Tons of CO <sub>2</sub> equiv. per \$1000 GDP, 1990, 2010	5.2	1.6

### CO<sub>2</sub> emissions from fuel combustion

Million tons of CO <sub>2</sub> equivalent, 1990, 2011	3.3	8.9
% change per annum, 1990, 2011	4.8	12.5
Tons of CO <sub>2</sub> equiv. per capita, 1990, 2011	12.6	21.9
Grams of CO <sub>2</sub> equiv. per \$1 GDP, 1990, 2011	255.8	480.2

## Water

Renewable water available, 1992, 2012	31257	20619
Domestic water withdrawal, 2009	-	384.1
(m <sup>3</sup> per capita per annum)		

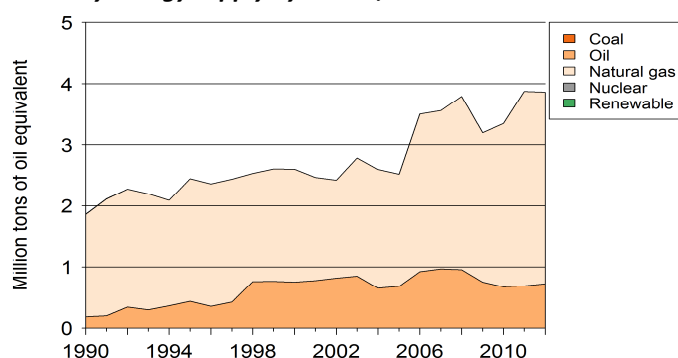
## Energy

### Total primary energy supply (TPES) (kg of oil equivalent)

Per capita, 1990, 2012	6721.3	9370.3
Per 1 000 GDP 2005 PPP dollars, 1990, 2012	135.9	203.8

Renewable energy (% of TPES), 1990, 2011	0.1	0.0
--	-----	-----

### Primary energy supply by source, 1990-2012



## Biodiversity

### Areas protected

Marine (% of territorial water), 1990, 2012	1.4	1.4
Terrestrial (% of surface area), 1990, 2012	36.7	44.0
Forest (% of land area), 1990, 2012	78.4	71.4

## Natural disasters

Deaths (number per annum), 1994-2003	0.0	-
People affected (1 000 per annum), 1994-2003	0.0	-
Economic damages (% of GDP), 1994-2003	0.0	-

## Connectivity

Mobile cellular subscriptions,* 1990, 2013	0.7	112.2
Internet users,* 1990, 2013	0.0	64.5
Fixed broadband internet subscribers,* 2001, 2013	0.6	5.7
* (per 100 population)		

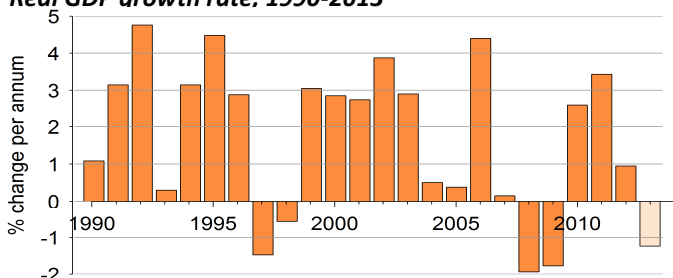
Railway density	-	-
Road density, 2010	-	574.8
Km of railway/road per 1 000 km <sup>2</sup> land area		
Paved roads (% of roads), 1990, 2010	31.4	81.1
Passenger cars (per 1 000 pop.), 2000, 2011	353.1	327.0
Road traffic deaths (per 100 000 pop.), 2010	-	6.8

## Economic growth

### Gross domestic product (GDP)

Constant, billion 2005 USD, 1990, 2012	6.9	10.3
Current USD per capita, 1990, 2012	13702	41127
2005 PPP per capita, 1990, 2012	49451	45979

### Real GDP growth rate, 1990-2013



## Employment

### Employment-to-population ratio

% Population aged 15 and above, 1991, 2012	62.5	61.9
% Female aged 15 and above, 1991, 2012	44.1	50.7
% Male aged 15 and above, 1991, 2012	78.5	72.9

### Unemployment rate (% of labour force), 1991, 2012

Female, 1991, 2012	5.2	4
Male, 1991, 2012	4.5	3.6

### Youth unemployment rate

% of labour force aged 15-24, 1991, 2012	12.6	11.4
--	------	------

## Fiscal balance

Government revenue (% of GDP), 1990, 2013	42.4	42.6
Government expenditure (% of GDP), 1990, 2013	43.7	31.3

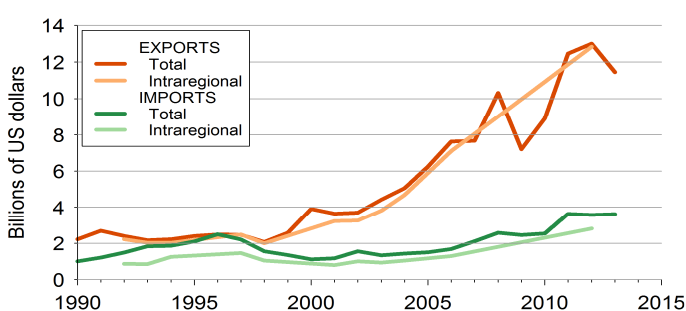
## Monetary measures

Inflation rate (% per annum)	-	-
Exchange rate against USD, 1990-2000, 2013	-0.5	0.1
(% change per annum)		

## International trade

Exports of merchandise (% of GDP), 1990, 2013	62.9	66.6
Imports of merchandise (% of GDP), 1990, 2013	28.4	21.0
Exports of services (% of GDP), 1996, 2011	11.8	7.2
Imports of services (% of GDP), 1996, 2011	10.9	9.3

### Total and intraregional exports and imports, 1990-2013



## International financing

FDI inflows (% of GDP), 1990, 2012	0.2	5.1
FDI outflows (% of GDP), 1990, 2012	0.0	-2.5
ODA received (% of GDP), 1990	0.1	-
Personal remittances rec'd (% of GDP)	-	-
Net external debt (% of GDP)	-	-