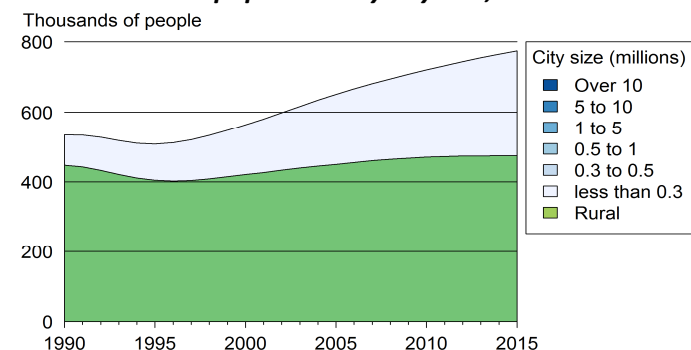


Bhutan

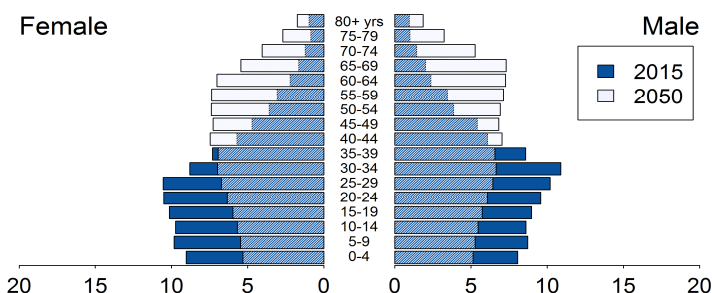
Demographic trends

Population size (thousands), 1990, 2015	535.5	774.8
Average annual growth rate (%), 1990, 2015	0.5	1.2
Urban population (% of pop.), 1990, 2015	16.4	38.7
in cities over 1 million people	0.0	0.0
in cities from 0.3 to 1 million people	0.0	0.0
in cities < 0.3 million people	16.4	38.7
Population density (pop. per km ²), 1990, 2012	11.4	19.4
Foreign population (% of pop.), 1990, 2013	4.4	6.7
Net migration rate (migrants per 1 000 pop.)	-32.9	2.7
Life expectancy at birth (in years)	54.5	68.9
Total fertility rate, 1990, 2015	5.6	2.0
(Live births per woman)		
Adolescent fertility rate	102.4	27.7
(Live births per 1 000 women aged 15-19 years)		

Rural and urban population by city size, 1990 to 2015



Population age structure, 2015 and 2050



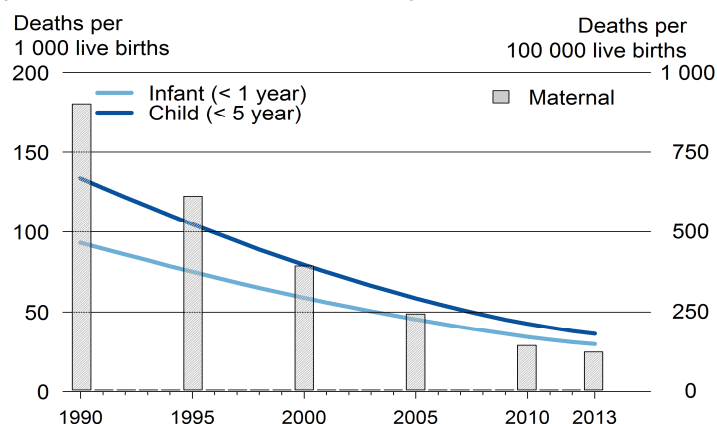
Poverty and inequalities

Population living in poverty (% of population)		
below 1.25 dollars (2005 PPP) a day, 2012	-	2.4
below 2 dollars (2005 PPP) a day, 2012	-	15.2
below national poverty line, 2012	-	12.0
Gini index (income equality coefficient), 2012	-	38.7
Population with access to		
Improved water sources (% of pop.)		
Rural, 1990, 2015	67	100
Urban, 1990, 2015	97	100
Improved sanitation (% of pop.)		
Rural, 1990, 2015	14	33
Urban, 1990, 2015	45	78

Health

Mortality rate (deaths per 1 000 live births)		
Infant, 1990, 2013	93.3	29.7
Under-five, 1990, 2013	133.7	36.2
Children under-five underweight (%), 1999, 2010	14.1	12.8
Maternal mortality ratio, 1990, 2013	900	120
(deaths per 100 000 live births)		
Antenatal care visit, at least one visit, 2000, 2012	51	97.9
(% of women with live births)		

Infant, child and maternal mortality rates, 1990 to 2013



Population living with HIV

Total adults, number, 1990, 2013	24	641
AIDS deaths, number, 1990, 2013	0.6	31
HIV prevalence rate (% pop. 15-49 yrs), 1990, 2013	0.0	0.1

Total health expenditure

% of GDP, 1995, 2013	3.8	3.6
Current PPP dollars per capita, 1995, 2012	70.7	252.8
General government health expenditure		
% of government expenditure, 1995, 2013	7.2	6.6
Current PPP dollars per capita, 1995, 2011	50.1	198.1

Education

Gross enrolment (% of respective school age population)		
Primary education, 1999, 2013	75.0	106.6
Secondary education, 1999, 2013	27.1	77.7
Tertiary education, 1999, 2013	2.7	10.9
Adult literacy rate (% of pop. aged 15 yrs and above)		
Female, 2015	-	55.0
Male, 2015	-	73.1
Public expenditure on education		
% of GDP, 2000, 2013	5.5	5.6
% of total government expenditure, 2000, 2013	11.5	15.6
Public expenditure per pupil (% of GDP per capita)		
Primary, 2013	-	8.2
Secondary, 2013	-	34.2
Tertiary, 2013	-	102.1
Gross domestic expenditure on research/development		
% of GDP	-	-
Current PPP dollars per capita	-	-

Air pollution and climate change

Greenhouse gas emissions		
Million tons CO ₂ -e _q , 1990, 2012	1.3	3.3
% change per annum, 1990, 2012	7.0	1.1
Tons CO ₂ -e _q , per capita, 1990, 2012	2.4	4.4
Tons CO ₂ -e _q /1 000 US dollars GDP, 1990, 2012	4.7	1.8
CO ₂ emissions from fuel combustion		
Million tons CO ₂ -e _q	-	-
% change per annum	-	-
Tons CO ₂ -e _q , per capita	-	-
Grams CO ₂ -e _q /US dollar GDP	-	-

Water

Renewable water available *, 1992, 2014	#####	#####
Domestic water withdrawal *, 2008	-	24.5
* (m ³ per capita per annum)		

Energy

Total primary energy supply (TPES) (kg of oil equivalent)		
Per capita	-	-
Per 1 000 GDP 2005 US dollars	-	-
Renewable energy (% of TPES)	-	-

Primary energy supply by source, 1990 to 2013

No available data

Biodiversity

Areas protected		
Marine (% of territorial water), 1990, 2014	0.0	0.0
Terrestrial (% of surface area), 1990, 2014	14.2	47.3
Forest (% of land area), 1990, 2012	65.0	85.8

Natural disasters

Deaths (number per annum), 1992, 2011	0	1
People affected (1 000 per annum), 1992, 2011	0	20
Economic damages (% of GDP), 1992, 2011	0.0	0.0

Connectivity

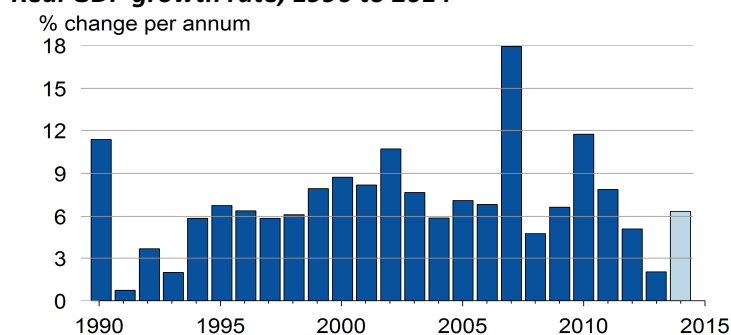
Mobile cellular subscriptions,* 2000, 2014	0.0	82.1
Internet users,* 2000, 2014	0.4	34.4
Fixed broadband internet subscribers,* 2014	-	3.3
* (per 100 population)		

Railway density	-	-
Road density, 2011	-	219.5
Km of railway/road per 1 000 km ² land area		
Paved roads (% of roads), 1990, 2011	77.1	34.2
Passenger cars (per 1 000 pop.), 2011	-	55.4
Road traffic deaths (per 100 000 pop.), 2013	-	15.1

Economic growth

Gross domestic product (GDP)		
Constant, billion 2005 US dollars, 1990, 2014	0.3	1.6
Current US dollars per capita, 1990, 2013	511	2 360
2011 PPP per capita, 1990, 2013	2 333	7 161

Real GDP growth rate, 1990 to 2014 ^{1/}



Employment

Employment-to-population ratio		
% Population aged 15 and above, 1991, 2013	63.2	71.0
% Female aged 15 and above, 1991, 2013	47.8	65.0
% Male aged 15 and above, 1991, 2013	77.1	75.9
Unemployment rate (% of labour force), 1991, 2013		
Female, 1991, 2013	2.4	2.5
Male, 1991, 2013	1.6	1.9
Youth unemployment rate		
% of labour force aged 15-24, 1991, 2013	5.4	6.7

Fiscal balance

Government revenue (% of GDP), 1990, 2012	18.8	20.3
Government expenditure (% of GDP), 1990, 2012	33.9	35.0

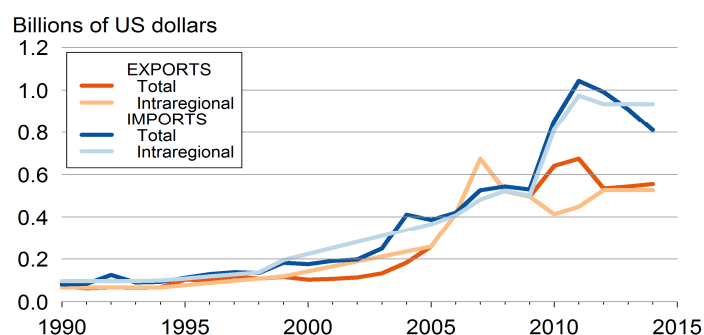
Monetary measures

Inflation rate (% per annum), 1990, 2014	10.0	8.2
Exchange rate against US dollar, 1990, 2014	7.9	4.1
(% change per annum)		

International trade

Exports of merchandise (% of GDP), 1990, 2014	25.6	29.3
Imports of merchandise (% of GDP), 1990, 2014	29.6	42.8
Exports of services (% of GDP), 2014	-	6.9
Imports of services (% of GDP), 2014	-	11.4

Total and intraregional exports and imports, 1990 to 2013



International financing

FDI inflows (% of GDP), 1990, 2014	0.6	0.3
FDI outflows (% of GDP)	-	-
ODA received (% of GDP), 1990, 2013	16.8	7.6
Personal remittances rec'd (% of GDP), 2014	-	0.7
Net external debt (% of GDP), 1990, 2013	30.5	83.1