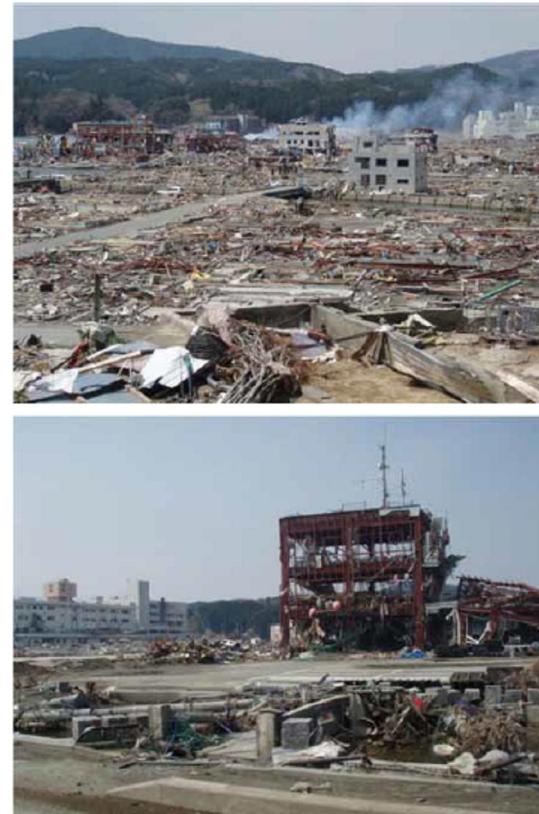


# Disaster Risk Reduction policy and statistics in Japan



Source: International Research Institute of Disaster Science, Tohoku University

# Outline of the presentation

- Overview of disaster risk reduction policy in Japan
- Overview of disaster data collection system in Japan
- Scheme related to disaster and disability in Japan
- Data related to disaster and disability in Japan
- Issues on data on disaster and disability in Japan

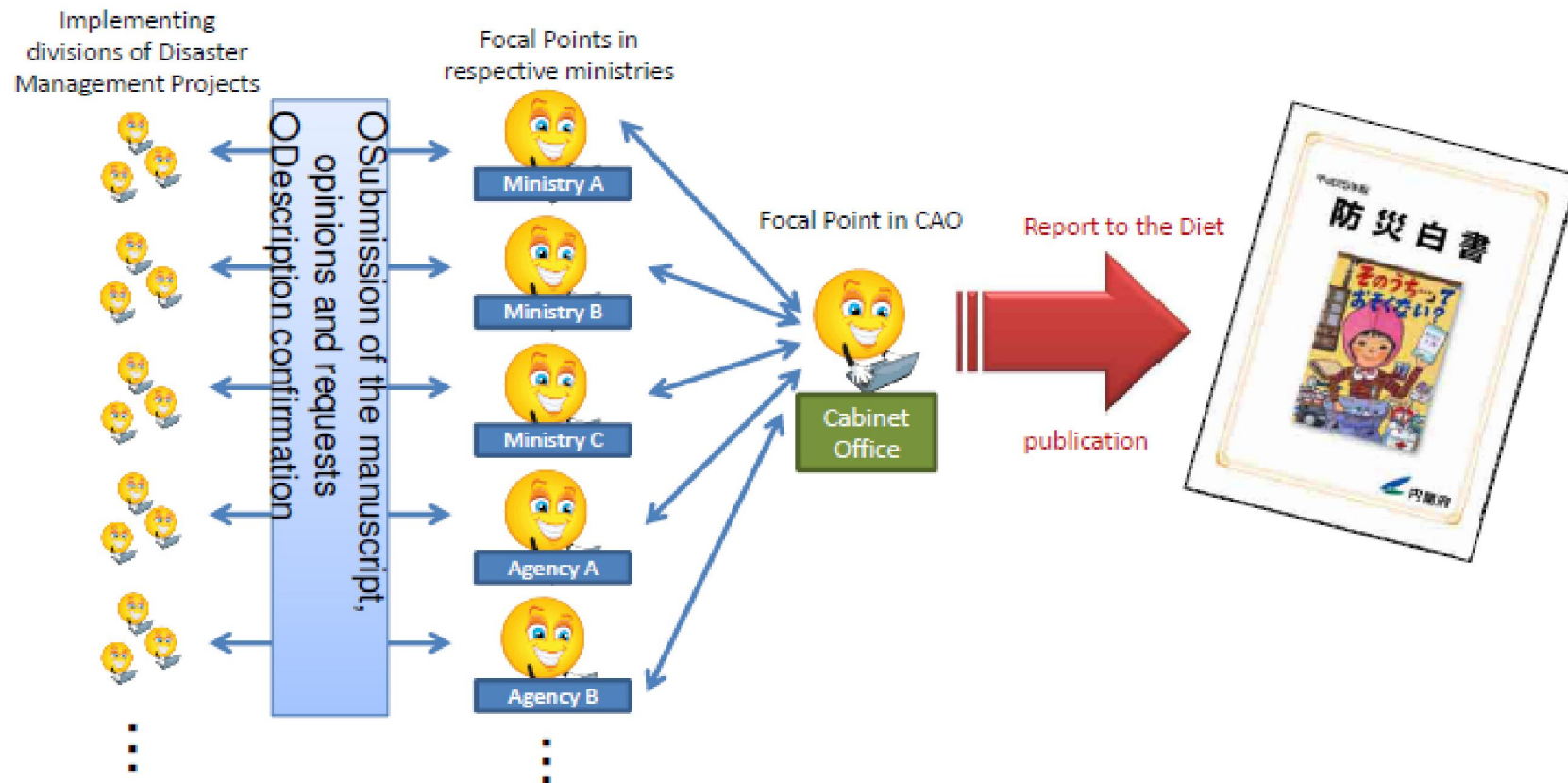
# Overview of disaster risk reduction policy in Japan

- Disaster Countermeasures Basic Act (1961) and 6 other basic acts.
    - Annual publication of white paper on disaster and management since 1963
    - Data on disability is included
    - Prefectural governments and municipalities are mandated to have disaster preparedness plan
  - Other 48 sectoral laws on preparedness/emergency response/reconstruction
- à Indicator 7.1



# How to collect Disaster DATA?

## Data gathering system of the Government of Japan



# Overview of disaster data collection system in Japan #2

- Municipalities collect information on deaths( disaggregated by gender, age and causes), injuries, damaged houses and damaged public facilities.
- Prefectures collect information from municipalities.

-----

- National police agency: human victims
- Ministry of Agriculture, Forestry and Fisheries: Economic losses.
- Ministry of Economy, Trade and Industry: Damages on companies

# Scheme related to disaster and disability in Japan

- Disaster Psychiatric Assistance Team to be dispatched upon requests from prefectural government.  
à Indicator 7.5
- General assistive device provision scheme  
à indicator 7.6
- Assistance for older persons and severely disabled persons
- à Indicator 7.1

# Data related to disaster and disability in Japan

- Dedicated interviews with officials at municipalities, representatives of organizations of persons with disabilities were conducted in the Tohoku Earthquake affected areas in Iwate, Miyagi and Fukushima prefectures by members of the Disability Policy Reform Promotion Council from 2011 to 2012.

# Data related to disaster and disability in Japan (example 1 from the town of Minami Sanriku)

	Number of registered citizens	Number of registered persons with disabilities	Percentage of persons with disabilities
Population as of February 2013	17,666	940	5.3 %
Death/missing	798	112	14.0%
Ratio of those who are dead/missing	4.5 %	11.9 %	

Source: Disability Policy Reform Promotion Council, 2013



# Issues on data on disaster and disability in Japan

- Multilayered and multisectoral players in disaster data collection: no centralized data base
- Immediate deaths or not: not very clear in some cases
- Disability and disaster data collection are collected at municipalities
- Disaggregation of victim data by disability status are not mandated

Thank you