

# ***Gender Responsive Planning and Budgeting: Indonesian Experience***



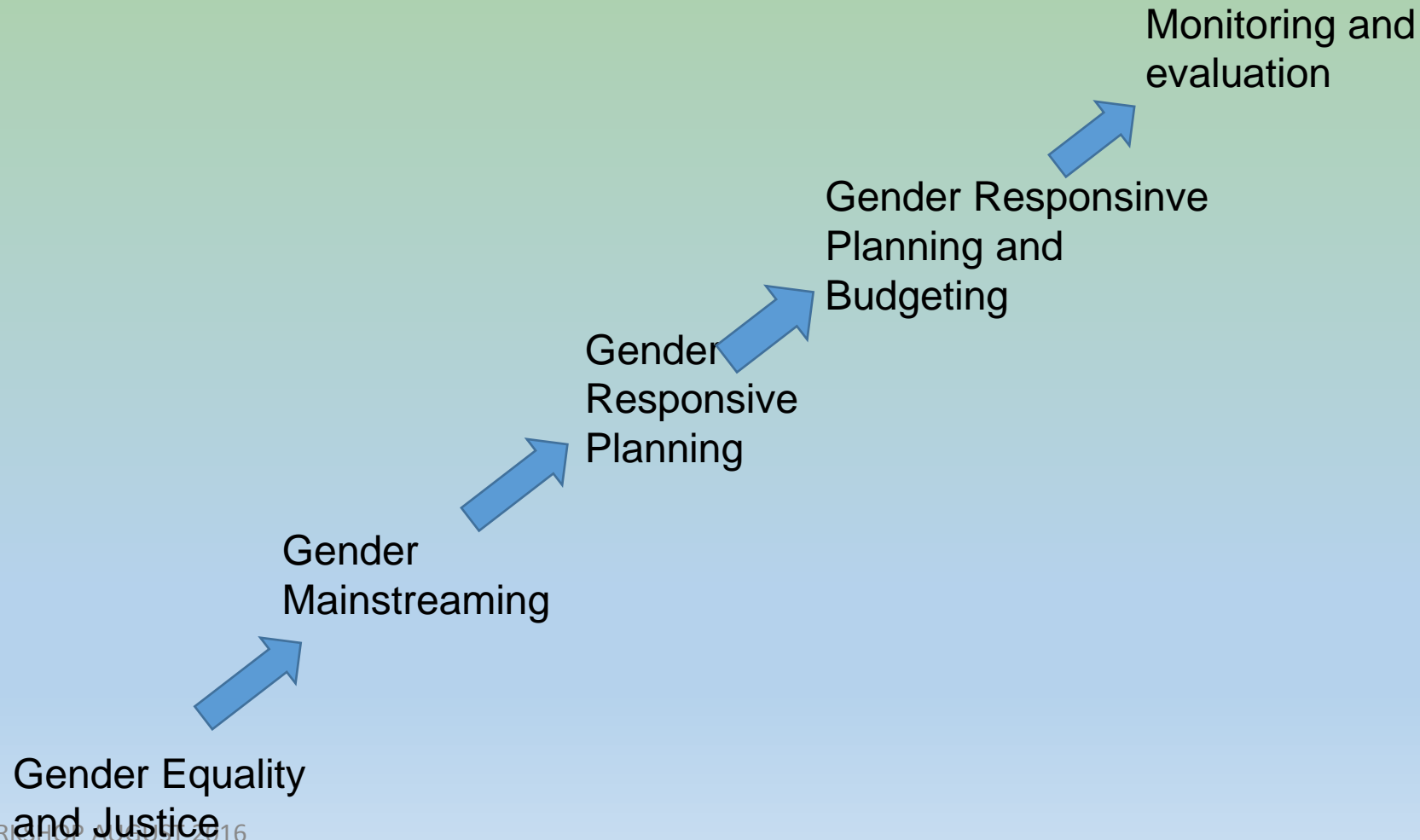
**Heru Kasidi**

**Ministry of Women Empowerment and Child Protection**

## LAOS GRB WORKSHOP AUGUST 2016



# Pathway to gender responsive planning and budgeting



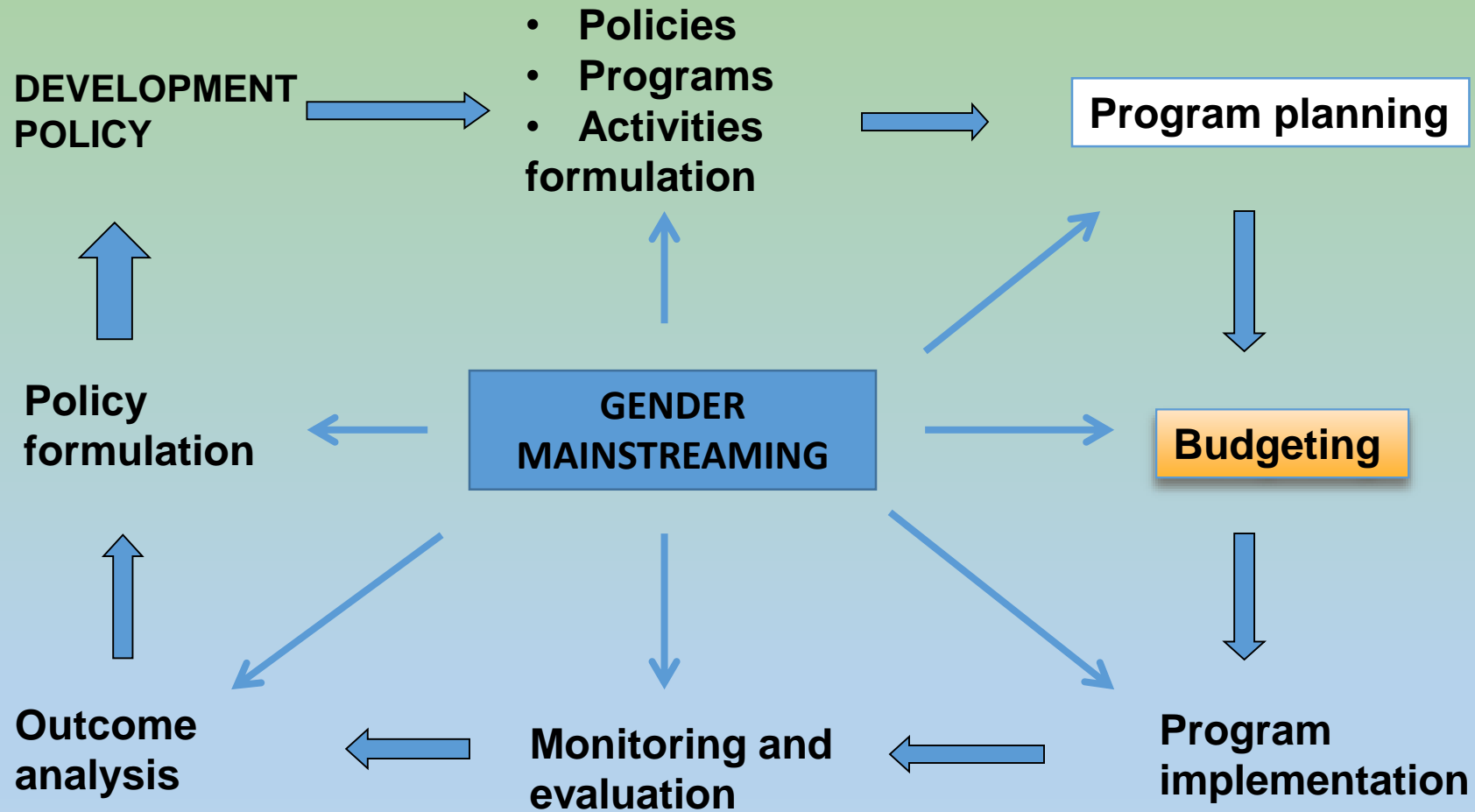
# **GENDER RESPONSIVE BUDGETING POLICY**

- 1. Presidential Instruction on GMS (2000)**
- 2. National Development Plan: Gender Indicators (2000-2019)**
- 3. Gender mainstreaming as Implementation Strategy**
- 4. Planning and Budgeting policy(2009-now)**

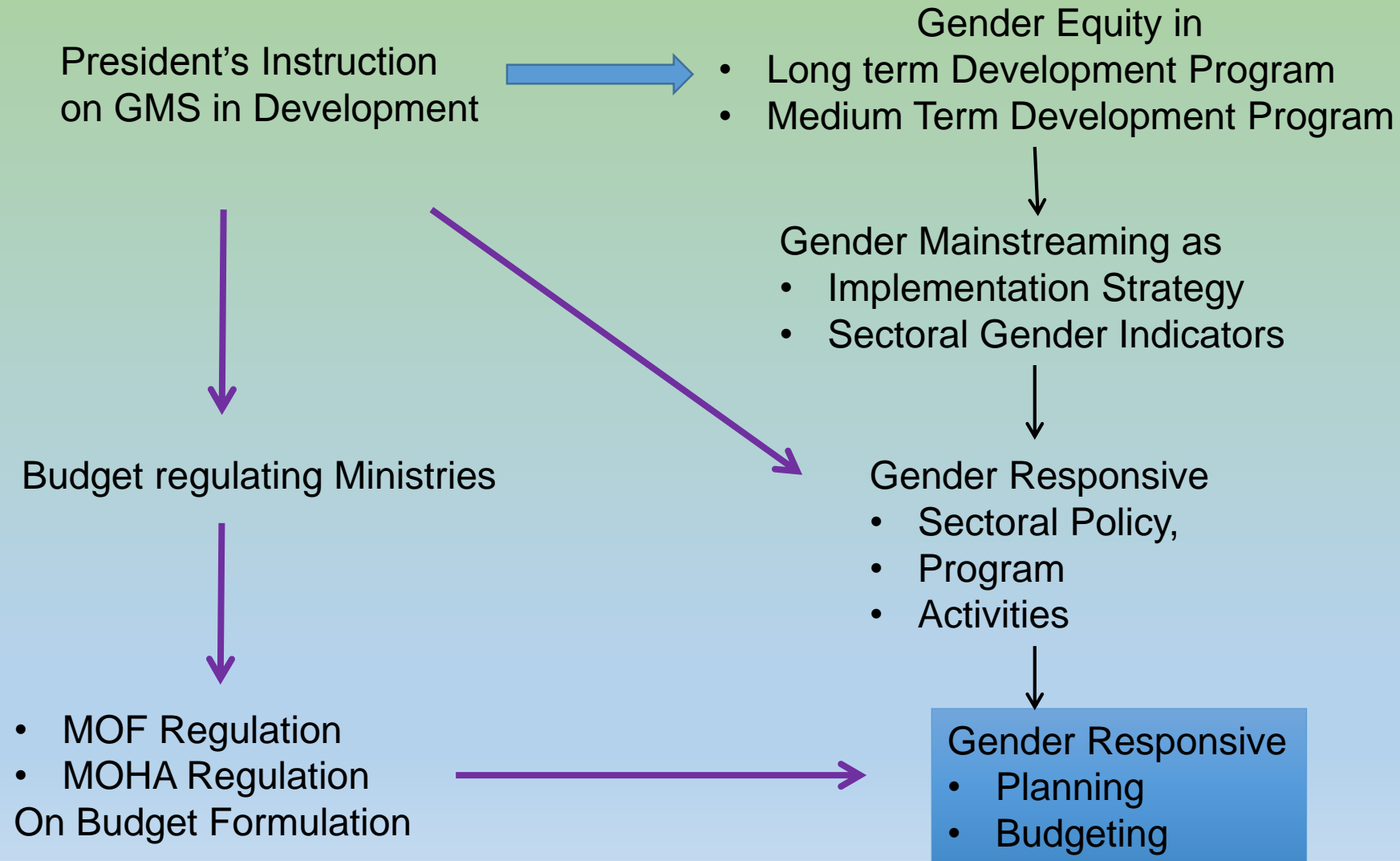


**At National and sub-National level**

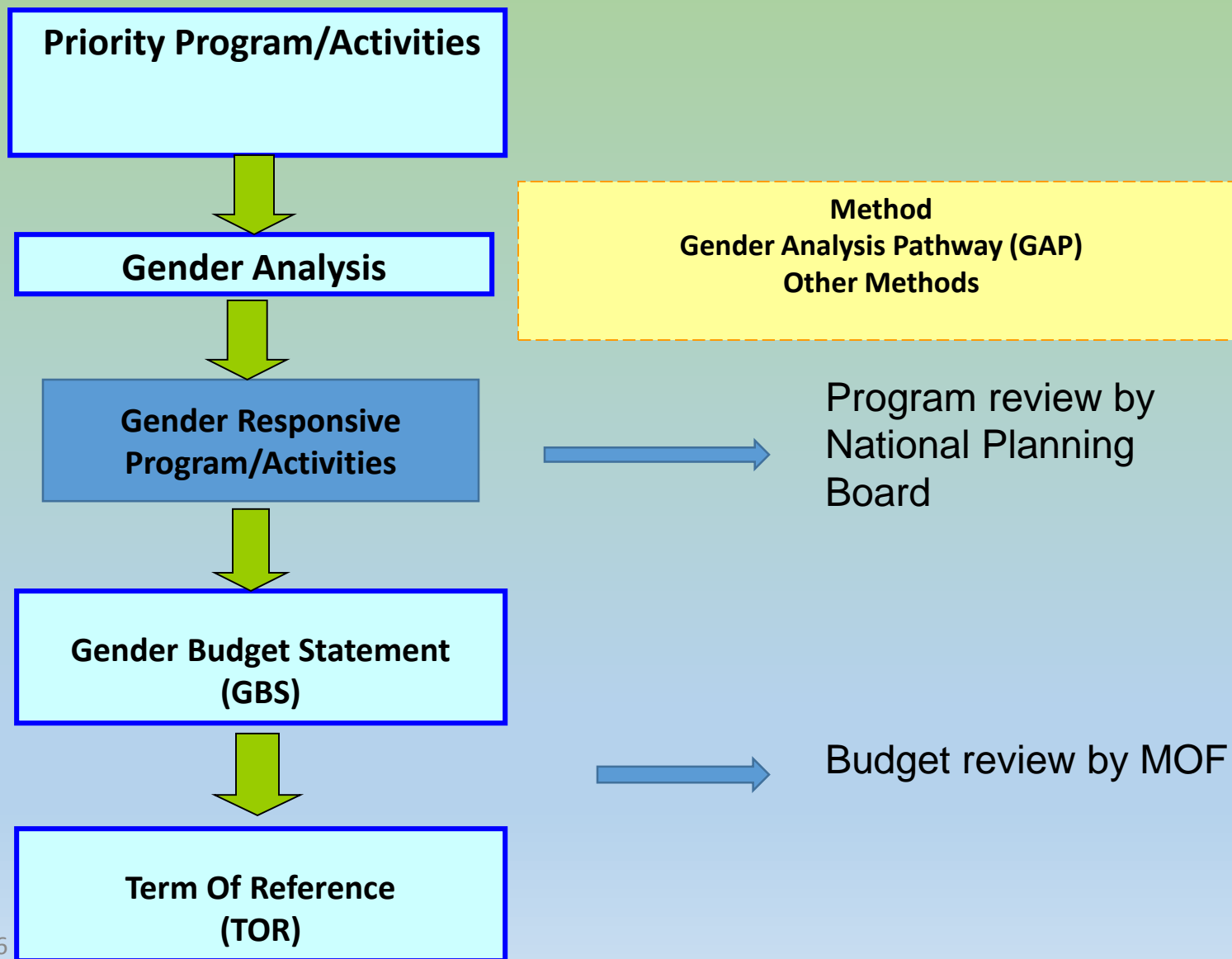
# Gender Mainstreaming in Planning and Budgeting Cycle



# GRB POSITION



# Steps of implementation



# Acceleration of GMS through Gender Responsive Planning and Budgeting

Join circular:

- Minister of Planning
- Minister of Finance
- Minister of Home Affair
- Minister of Women Empowerment and Child Protection





# Challenges

- **Awareness of decision makers**
- **Quick rotation of officials**
- **Availability of sex disaggregated data**
- **Large area to cover**
- **Shortage of resource persons**
- **GPRB is not yet completely institutionalized**
- **Monitoring of implementation**

# Finding innovative ways

- Top down and bottom up
- Deductive and inductive
- Examples of concrete actions then install it to system
- Strengthen network with community organization
- Integration with other approach

# Concrete action to policy

- Cottage industry : micro enterprises
- Integration of gender into curriculum of religion universities
- Gender sensitive text books for school
- Gender equity in family resilience building
- promoting women candidate for mayors and head of regional government
- Community initiative for women protection from VAW

## **GENDER ANALYSIS PATHWAY (GAP)**

### ***Summary form***

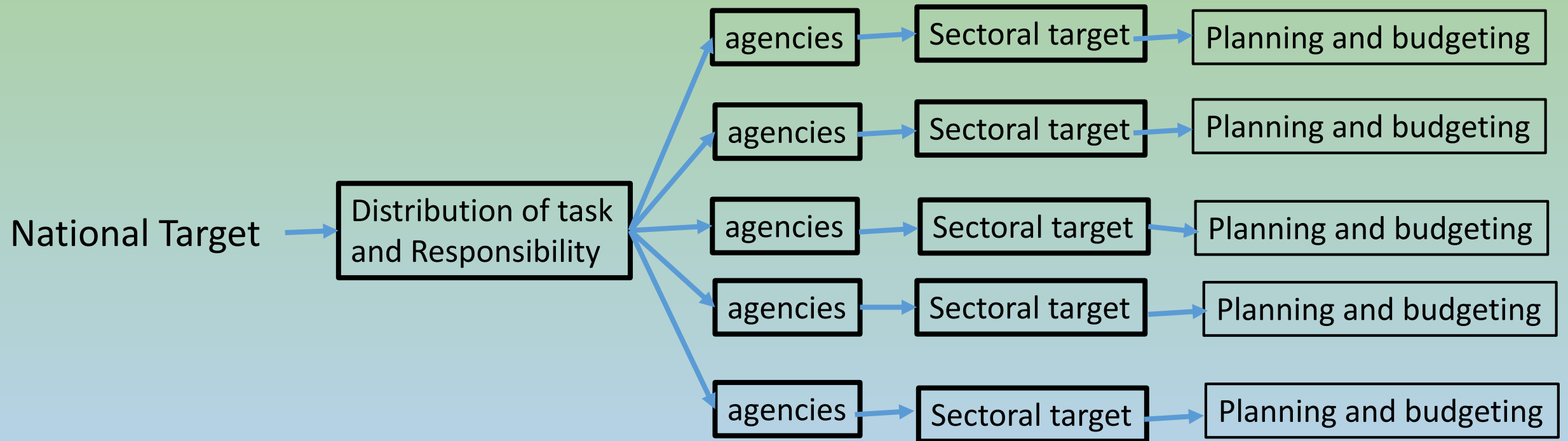
[illegible]

# Gender budget statement

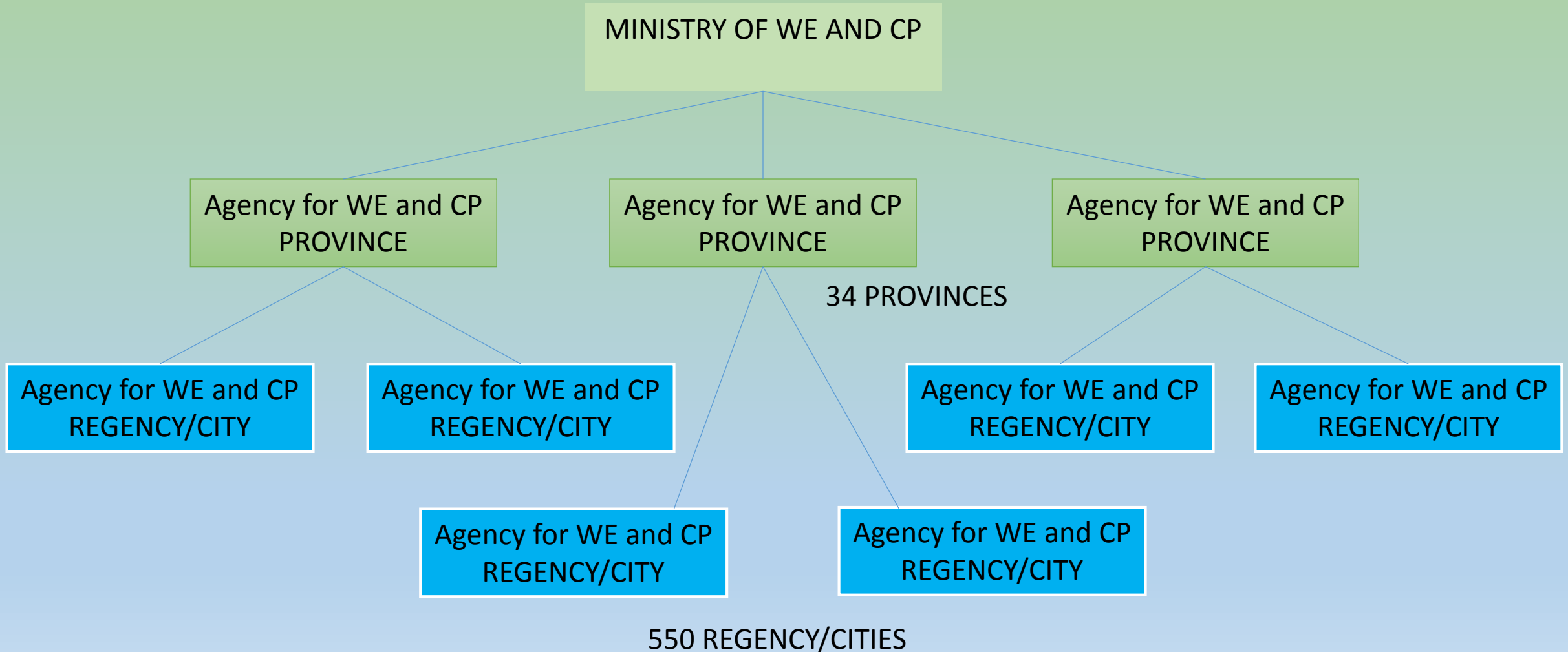
Program		
Program target		
Activities		
Background	Legal basis	
	General description	
Activities	Detail of activities	
	Indicators	
Objectives		
Method of implementation		
Location of activities		
Responsible unit		
Schedule of implementation		
Budget		

# Example of thematic activity

- Violence against women
  - Agencies involve:
  - Min. of Health
  - Min. of Social Affair
  - Min. of Education
  - Police Department
  - Attorney General



# Structure of Gender Mainstreaming Institution







# EXAMPLES OF OUTCOME of GENDER MAINSTREAMING

Institution	outcome
Min of Education	Gender parity ratio = 1 in Education policy Ratio girl:boy in school closing the gap 9 -12 years compulsory education
Min of Health	Guideline for standard building for public health center Alert husband program Mother loving hospital Services for violence survivor
Min of cooperatives	Credit and support for women micro enterprises
Min of social affair	Establishment of Directorate for rehabilitation of violence survivors Cash transfer for poor families with pregnant mother
Min of Public Works	Standard of settlement and housing Water and sanitation program Irrigation program





institution	Outcome
Min of Defense	Recruitment of women in military academy
Police Department	<ul style="list-style-type: none"> <li>• Recruitment of huge number of police women</li> <li>• Establishment of women and child unit</li> <li>• Training for Police officer on gender issues</li> <li>• Extension of services women and child unit to police station</li> </ul>
Min of transportation	<ul style="list-style-type: none"> <li>• Playing corner at stations and airport, breastmilk room</li> <li>• Special section in bus for women, women coach in the train</li> </ul>
Min of Civil Servant	Regulation on the provision of day care in govt offices
Min of religion	<ul style="list-style-type: none"> <li>• Revision of pre marital education</li> <li>• Integration of gender into curriculum in Religion Universities</li> </ul>
Min of Finance	Income tax, GMS
Universities	Establishment of Women and Gender Studies Center
Min of National Planning	Integration of gender mainstreaming in National Development Plan implementation strategies(Good governance, Sustainable development and gender mainsteaming)

# Gender and Tax

- Tax Law
- Exemption for Venture Capital which support micro and small enterprises
- Calculation of income tax:
  - Previous: only head of household entitled tax calculation after deduction for family expenses
  - Now for everyone who has dependent
  - Husband as dependent for women civil servant

# Thank you for your attention

