



ONE DISASTER-DATA

INDONESIA DISASTER-RELATED STATISTICAL FRAMEWORK



BNPB/BPS/UNFPA/UNESCAP
December 2019

CONTEXTS

SEDAI FRAMEWORK
FOR DISASTER RISK REDUCTION 2015-2030

OTHER GLOBAL
COMMITMENTS



OTHER GLOBAL
COMMITMENTS



INTERNATIONAL MONITORING AND REPORTING

INDICATORS

NATIONAL DEVELOPMENT

NATIONAL MEDIUM-TERM DEVELOPMENT PLAN 2020-2024 DRR AND CLIMATE CHANGE TARGETS

RISKS ASSESSMENTS

EMERGENCY
NEEDS ASSESSMENTS

POST DISASTER
NEEDS ASSESSMENTS

COMPILATIONS

IMPROVED DISASTER MANAGEMENT

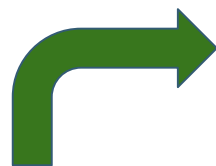
**INDONESIA
ONE DISASTER-DATA**

Basic statistics
Line ministries' sectoral data
Local governments' administrative data

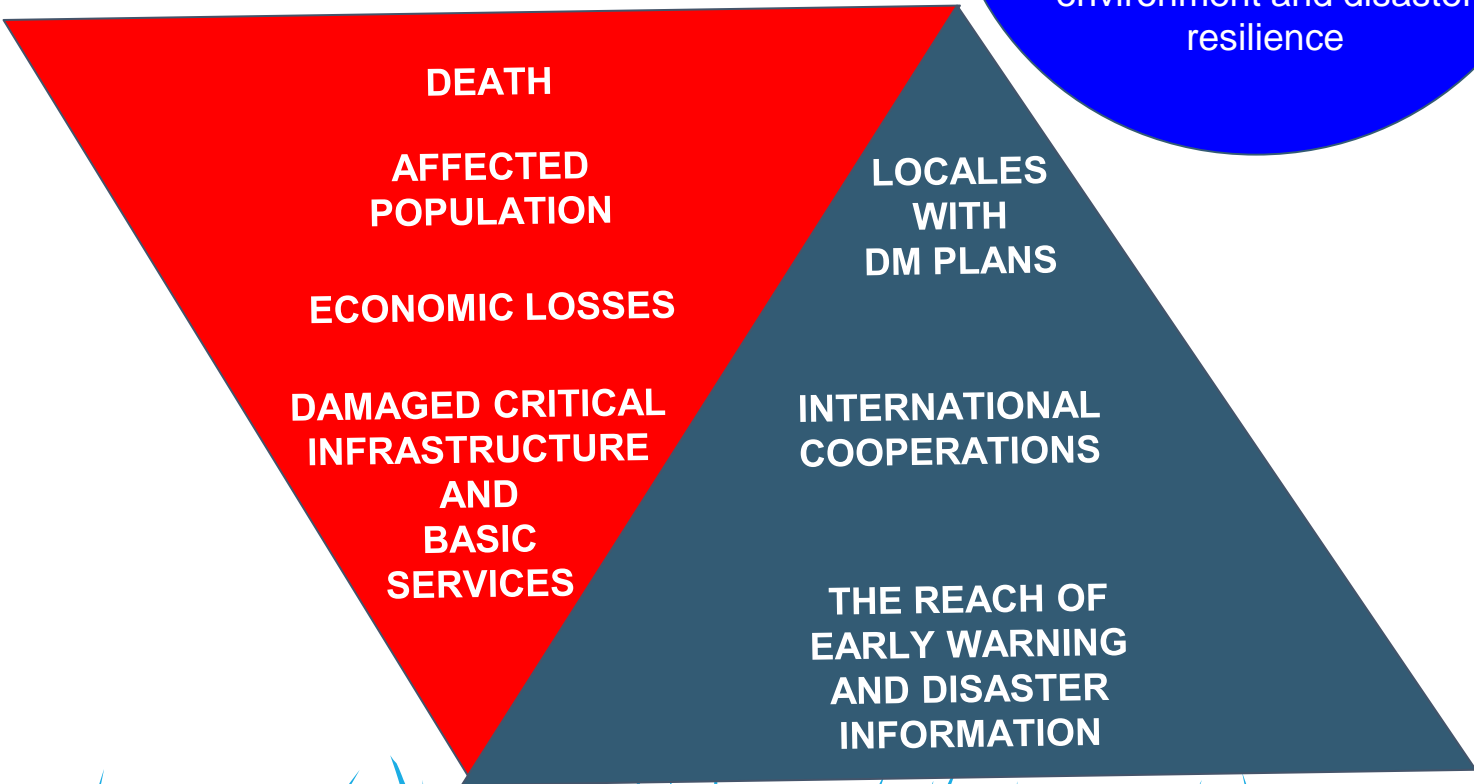


VARIOUS EXISTING DATA SOURCES

Disaster data
Thematic data



National Medium-Term Development Plan
Reducing economic losses up to 0.21% of GDP by 2024
through environment and disaster resilience



Death, missing, or affected people per 100,000

Direct economic losses in relation to GDP

Losses due to damaged critical infrastructure and disruption of basic services

Countries with DRR Strategies

Proportion of local governments implementing Sendai Framework strategies



Target 1.5

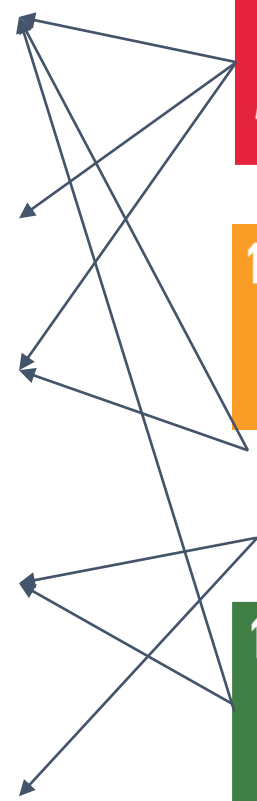


Target 11.5

Target 11.b



Target 13.1



POLICY FRAMEWORK

*Enhanced utilisation of data to improve disaster management
as part of the basic rights of citizens*

DISASTER MANAGEMENT

Disaster Management Act
No. 24/2007

STATISTICS

Statistics Act
No. 16 / 1997

LOCAL GOVERNANCE

Local Governments' Act
No. 23 / 2014

ONE-DATA

Presidential Decree on One-
Data Indonesia
No. 39 / 2019

The principle of data interoperability through one standard, one metadata, and one reference

SCOPE

*A guidelines that is internally coherent and internationally consistent
for all stakeholders to better utilisation of relevant and credible data to enhance disaster management*
UN ESCAP Technical Working Group on Disaster-Related Statistical Framework

ALL ASPECTS AND
PHASES OF DISASTER
RISK MANAGEMENT



COMPREHENSIVE

Management of disaster data and statistics regarding all matters throughout all phases of disaster risk management

ALL STAKEHOLDERS
OF DISASTER
MANAGEMENT



INTEGRATED

Involving all stakeholders including national and local governments, and its national and international partners

UNITY OF
STANDARDS,
METADATA, AND
PORTAL



CONSISTENT

Based on regulations and principles of One-Data Indonesia to promote data harmony and interoperability

INDONESIA ONE DISASTER-DATA

A framework consisting of policy, institutional arrangements, and technical management of disaster-related data as an integrated part of One-Data Indonesia and national statistical system to ensure disaster data that is:

- credible
- consistent
- interoperable, and
- internationally comparable

BASIC RANGE

RISKS

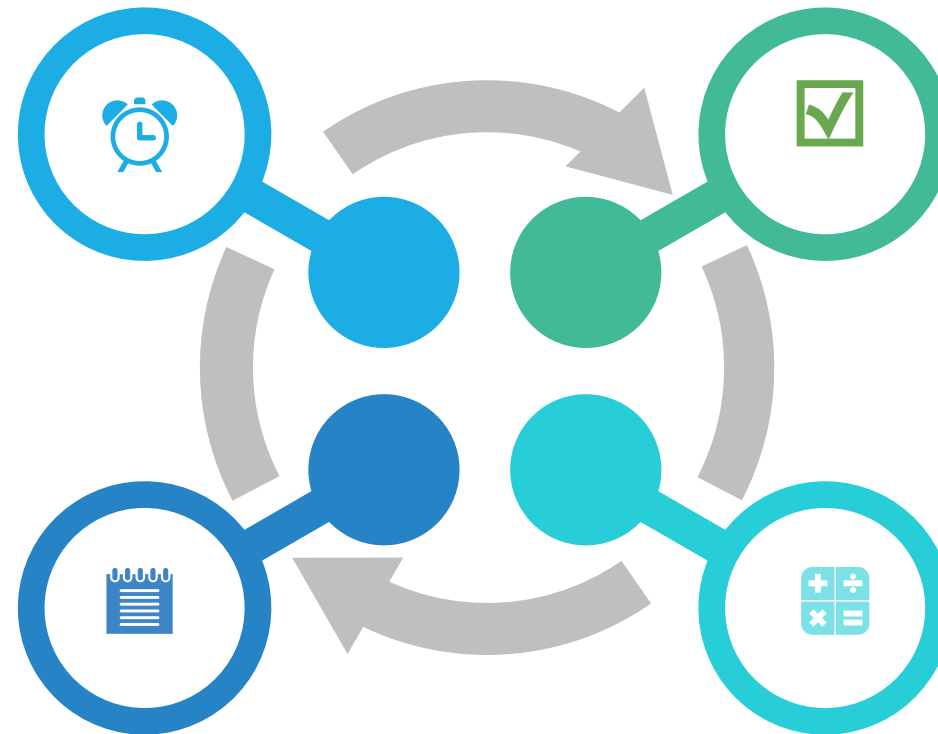
The extent of hazards that interacts with socio-economic characteristics that dynamically determines the chance of disaster-induced damage and losses

*HAZARDS
EXPOSURE
VULNERABILITY
COPING CAPACITIES*

IMPACTS

Information regarding damages and losses that directly or indirectly affect the post-disaster evaluation of damages and losses, i.e. impacts on

*HUMAN LIVES
MATERIALS AND THE ECONOMY
CRITICAL INFRASTRUCTURE
BASIC SERVICES
THE ENVIRONMENT AND HERITAGE*



DISASTER EVENTS

Characteristics of every hazardous events that are required to respond and recover from emergencies, and to develop time-series statistics for forecasting, prediction, and planning

*TYPES
TIME
LOCATION
UNIQUE IDENTIFICATION
STATUS*

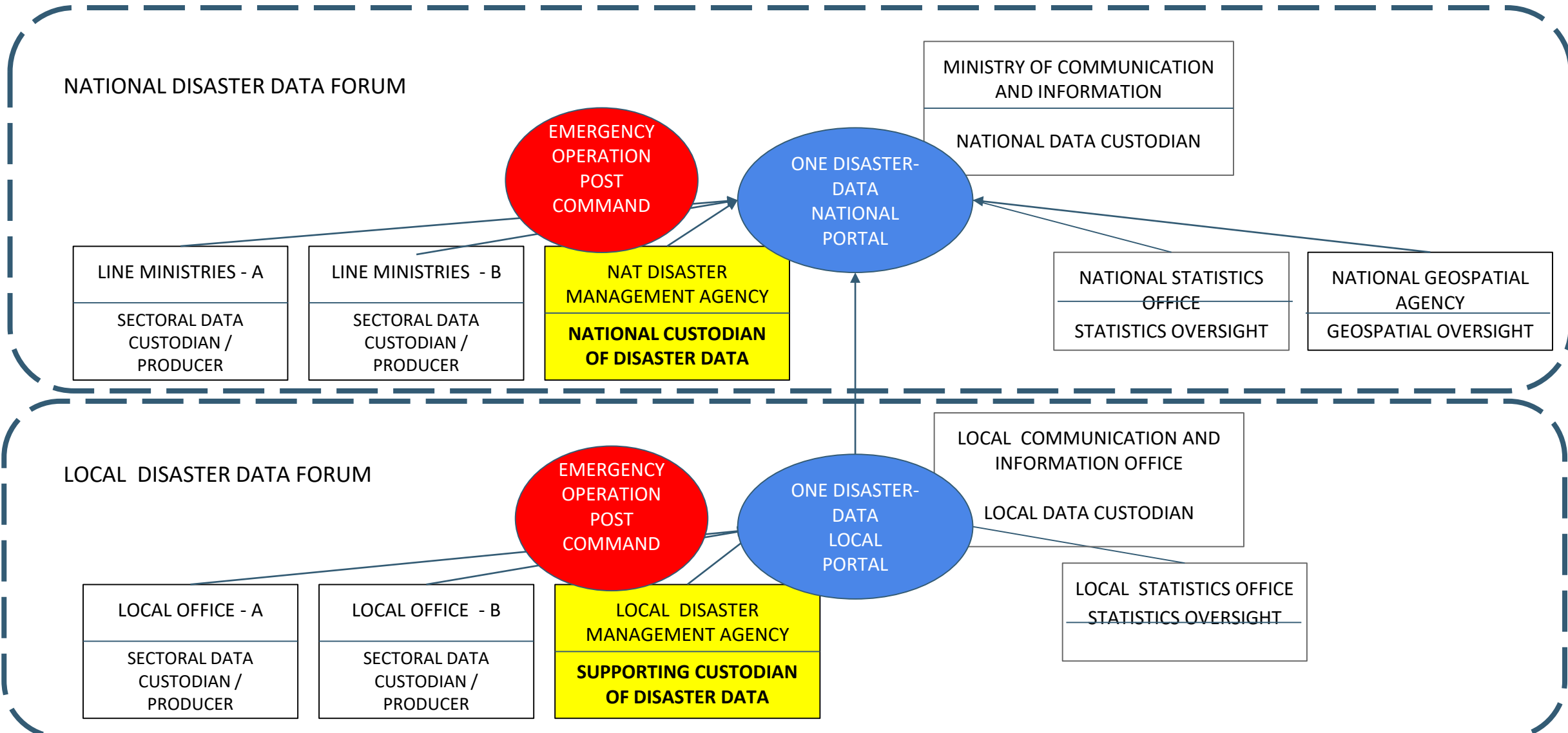
EXPENDITURE

Monetary valuation of spending on all investments and activities directly related to disaster risk management to determine the relationship between expenditure and results **and deliverables**

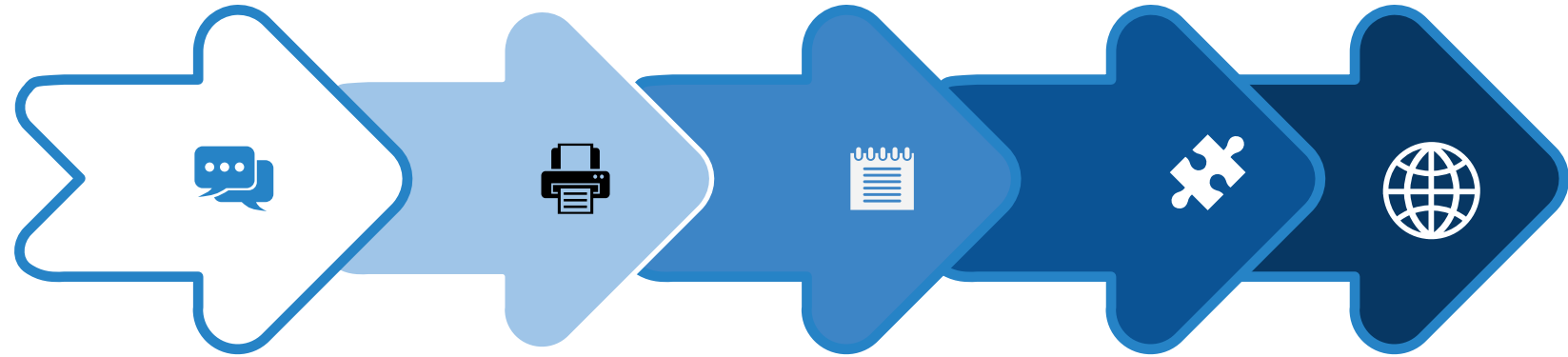
*RISK PREVENTION
RISK REDUCTION
EMERGENCY RESPONSE
RECOVERY
GENERAL GOVERNANCE, EDUCATION,
RESEARCH AND DEVELOPMENT, ETC.*



MECHANISMS



PROGRESS



01

BNPB - BPS CONSOLIDATION

15 OCTOBER

Joint development of framework, reconciling the mandates and objectives of the two national agencies

02

INTER-MINISTERIAL DATA MAPPING

3-4 NOVEMBER

Mapping out agencies' portfolios and identification of data possession plus proposed mechanisms and data protocol

03

LOCAL LEVEL PILOT VALIDATION

18 NOVEMBER

Confirming the framework applicability at the local level, identification of local dynamics and data traffic

04

REGIONAL EXPOSURE

3-5 DECEMBER

Asia-Pacific Regional Training - taking the lessons forward to the region

05

INTER-MINISTERIAL ADOPTION

- 17 DECEMBER

Development of regulatory framework - agreement on mechanisms and formation of national disaster data forum

<https://tinyurl.com/tq6e68t>

Thank you

