



GEM

Geoscience, Energy and Maritime Division



Pacific
Community
Communauté
du Pacifique

Pacific Community – SPC: Big Earth Data for Sustainable Development in the Pacific

**Dr Andrew Jones,
Director GEM Division**



GEM

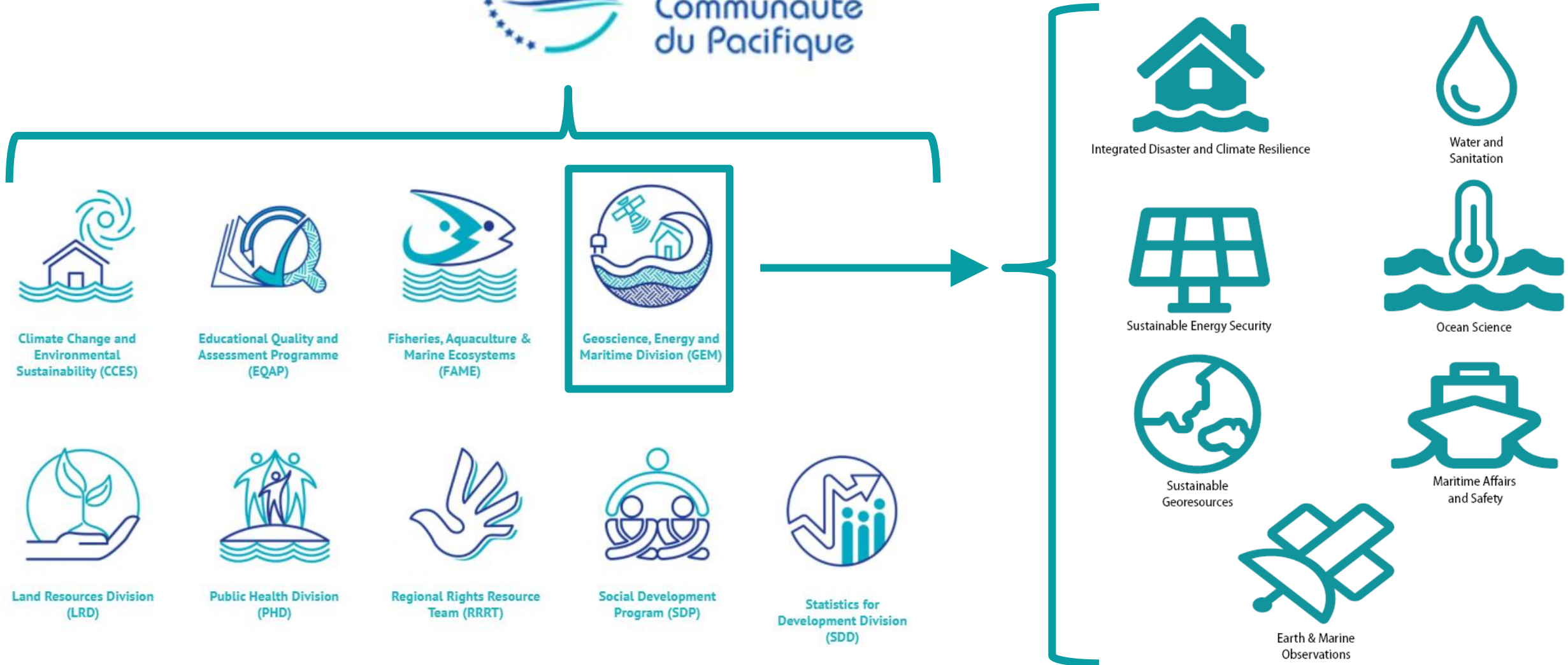
Geoscience, Energy and Maritime Division



Pacific
Community
Communauté
du Pacifique



Pacific
Community
Communauté
du Pacifique





GEM

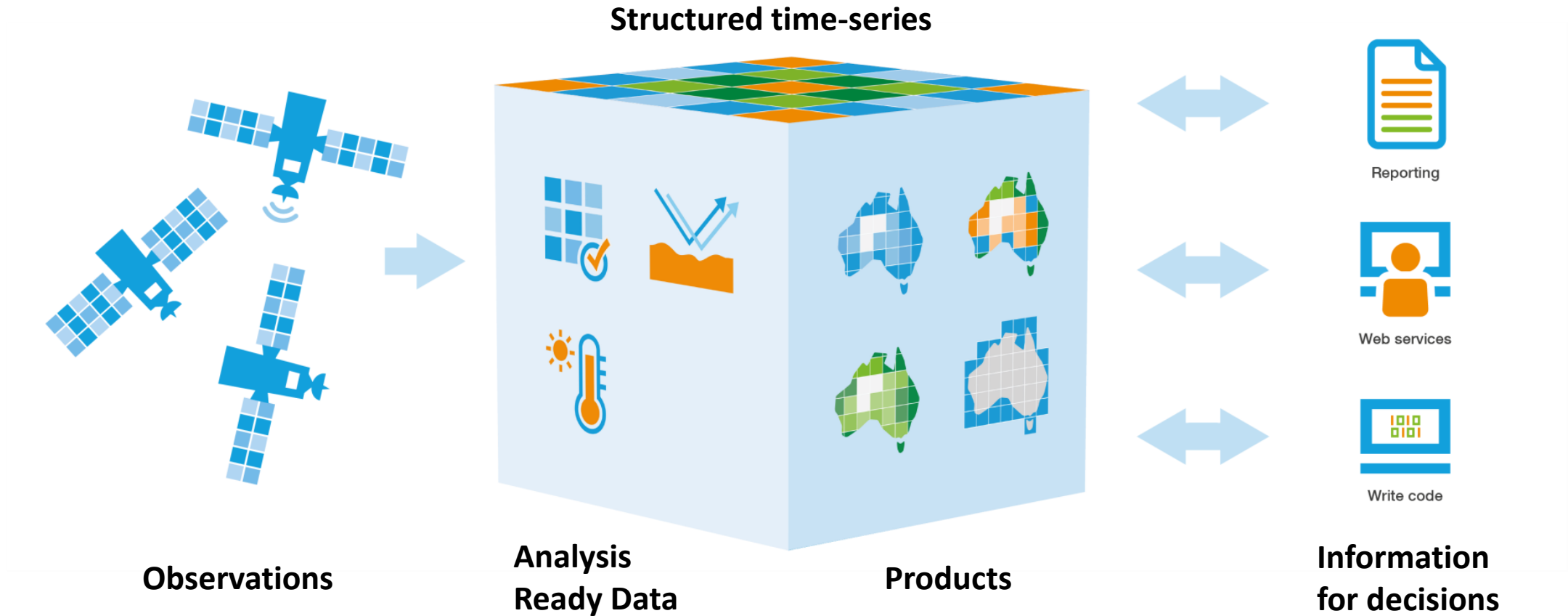
Geoscience, Energy and Maritime Division



Digital Earth Australia



Pacific Community
Communauté du Pacifique





GEM

Geoscience, Energy and Maritime Division



Pacific
Community
Communauté
du Pacifique

- Operational Data Cube for whole of Africa
 - Regular decision ready product / not research
 - Automated, run for every 10m pixel for entire continent updated every 5 days
 - Levering off other ODC developments
- New institutional home- ~30 staff
- Flexible cloud Infrastructure
- Funded for production of product and capacity building/Application development
- Multilateral effort, not owned by one country
- Products free and open and available to every African



Digital Earth
AFRICA





GEM

Geoscience, Energy and Maritime Division

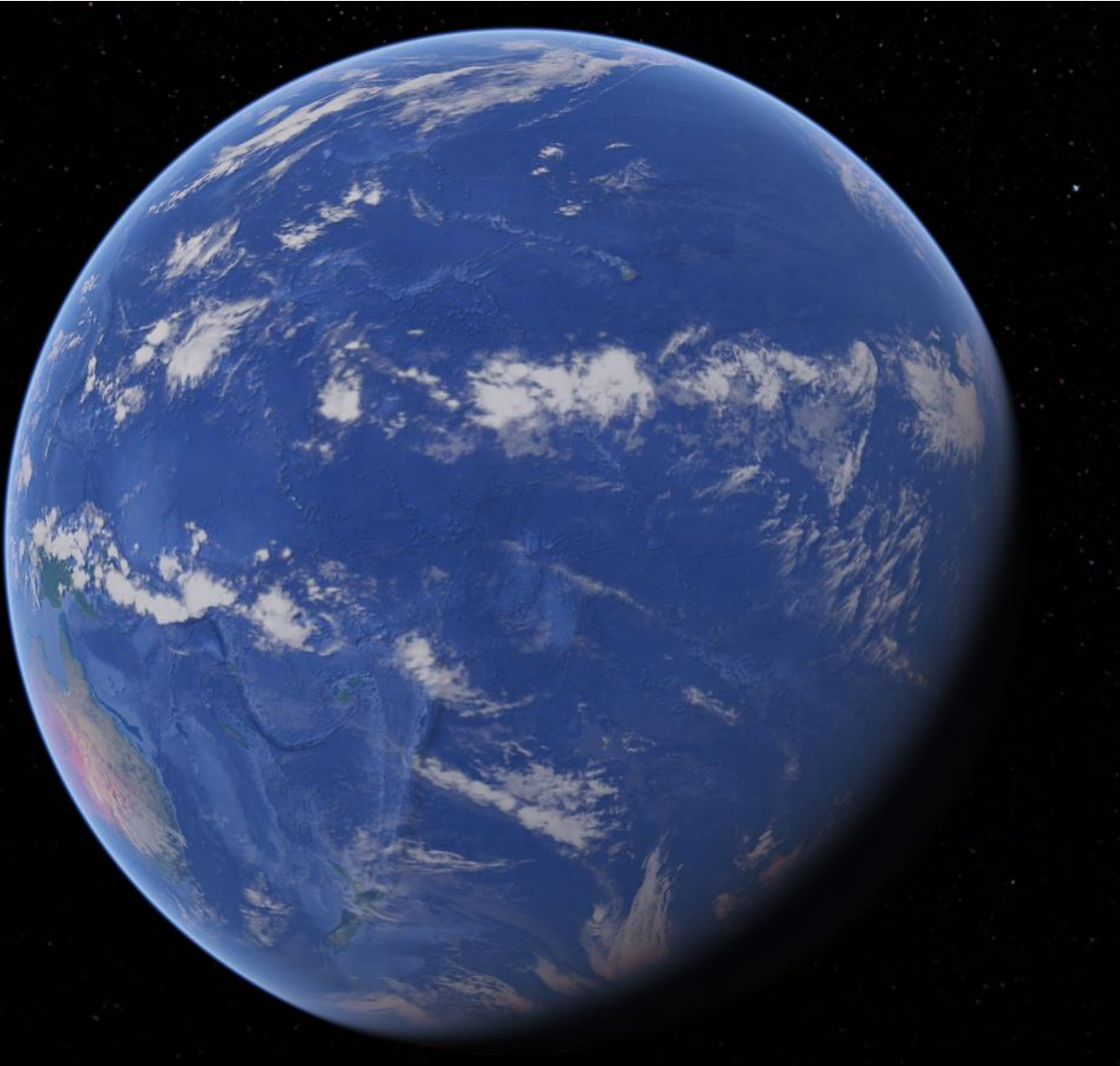
Digital Earth Pacific



Pacific
Community
Communauté
du Pacifique

Operational EO for the Pacific

- Climate Change impacts
- Coastal change/ inundation
- Coral bleaching
- Maritime surveillance
- Marine water quality
- Agriculture
- Water
- Vegetation





GEM

Geoscience, Energy and Maritime Division



Pacific
Community
Communauté
du Pacifique

Vinaka Vakalevu & Thank you

**Dr Andrew Jones,
Director GEM Division**