



GENDER-RESPONSIVE BUDGETING: LOCAL LEVEL EXPERIENCE

Regional Forum on Gender-responsive Budgeting in Asia and the Pacific

LYDIA D. MAURICIO-BALTAZAR

LOCAL GOVERNMENT OPERATIONS OFFICER VI

DILG- BULACAN, PHILIPPINES

18-19 July 2017

Bangkok, Thailand



National GAD Resource Program
Philippine Commission on Women

C
O
V
E
R
A
G
E

Part 1 – Legal Bases on Gender Responsive Budgeting at the Local Level

Part 2 –Enabling Mechanism for Gender Mainstreaming

Part 3 – Lessons Learned & Major Challenges on Gender Responsive Budgeting



Philippine
Commission
on Women



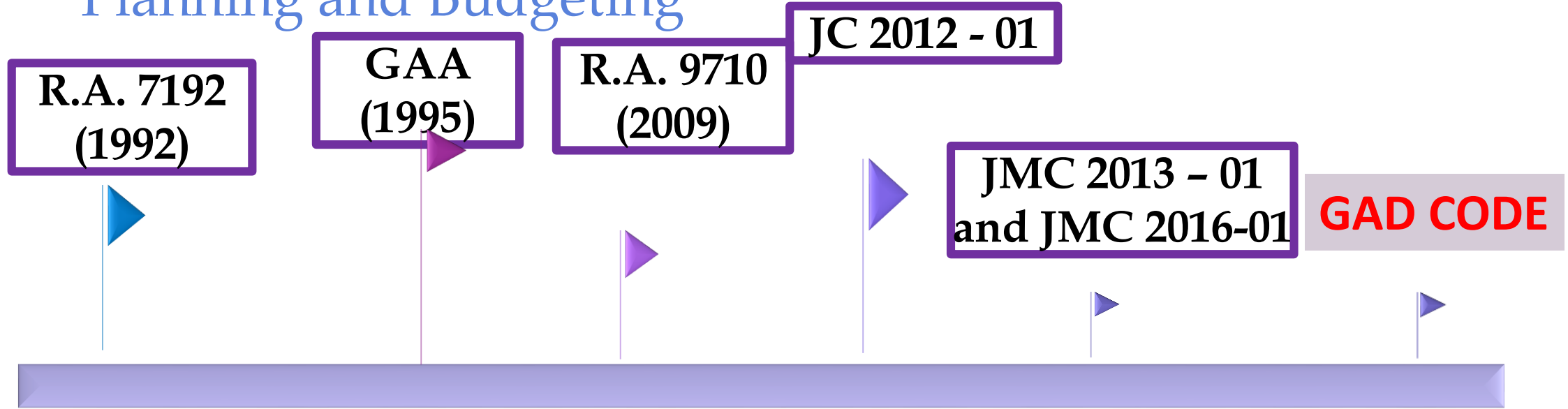
PART



Legal Bases on Gender Responsive Budgeting



Policies on Gender and Development (GAD) Planning and Budgeting



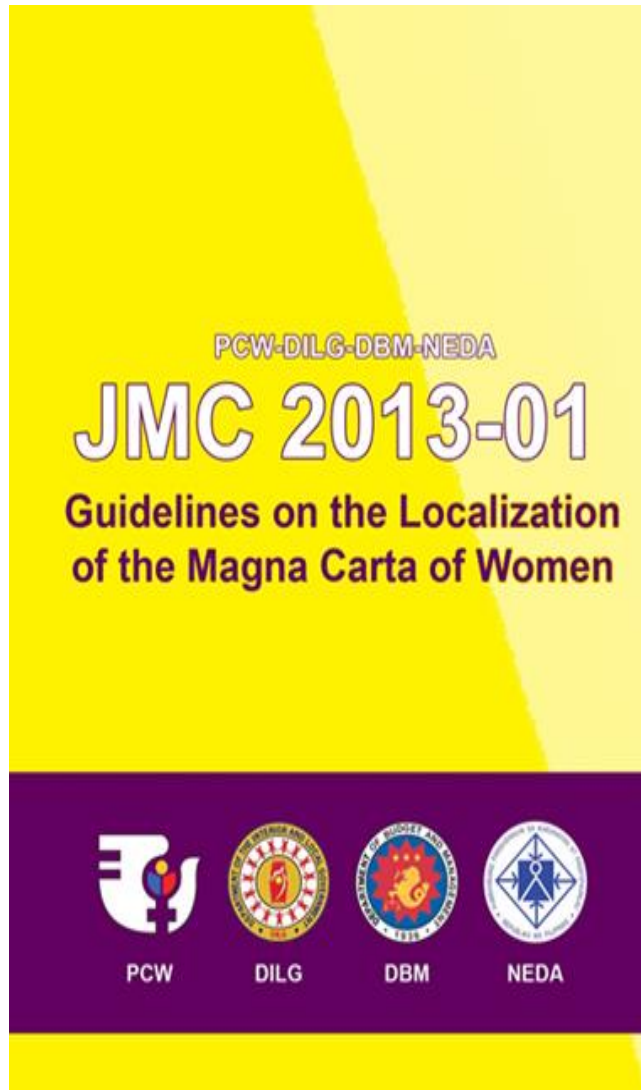
DILG, DBM, NEDA and PCW Joint
Memorandum Circular 2013-1: Guidelines
on the Localization of the MCW

1 -
/

RA 9710 – Magna Carta of Women

- GAD programs addressing gender issues and concerns shall be designed and implemented based on the mandate of NGAs and **LGUs**” (Sec 36.a)
- All agencies, offices, bureaus, SUCs, GOCCs, **LGUs** and other government instrumentalities shall formulate their annual GAD plans, programs and budgets within the context of their mandates” (Sec 37 A.1.a MCW IRR)





Section C of the JMC 2013-01:Gender and Development (GAD) Planning and Budgeting (with amendments)



Nati
Phili



LGU Mandates on MCW

PCW-DBM-NEDA-DILG JMC 2016-01

1. Ensure that the principles of RA 9710 or Magna Carta of Women (MCW) are mainstreamed at the local level.
2. Comply with the requirements of MCW
 - * creation of an enabling environment that will promote women's empowerment, and gender equality,
 - * ensure gender responsive governance at the local level
3. Promote and ensure that GAD is mainstreamed in the local policy making, planning, programming, budgeting, implementation, monitoring, and evaluation



GPB FORM (JMC 2013-01)

ANNUAL GENDER AND DEVELOPMENT (GAD) PLAN AND BUDGET FY _____

Region: _____
 Province: _____
 City/Municipality: _____
 Total Budget of LGU: _____
 Total GAD Budget: _____

Gender Issue/ GAD Mandate (1)	Cause of the Gender Issue (2)	GAD Objective (3)	Relevant LGU PPA (4)	GAD Activity (5)	Performance Indicator (6)	Performance Target (7)	GAD Budget (8)			Office of Primary Responsibility (9)
							MOOE	PS	CO	
<u>Client-focused/GAD Mandate</u>										
<u>Organization-focused</u>										
SUB-TOTAL										
GRAND TOTAL (MOOE+CO+PS)										
Prepared by: Chairperson, GFPS-TWG				Approved by: Local Chief Executive			Date: DAY/MM/YEAR			

NEW AMENDED GPB FORM (JMC 2016-01)

A. For Provinces, Cities and Municipalities

Gender Issue or GAD Mandate (1)	GAD Objective (2)	Relevant LGU Program or Project (3)	GAD Activity (4)	Performance Indicator and Target (5)	GAD Budget (6)			Lead or Responsible Office (7)
					MOOE	PS	CO	
CLIENT-FOCUSED								
1.								
2.								
Sub-total A								
ORGANIZATION-FOCUSED								
Sub-total B								
ATTRIBUTED PROGRAMS								
Title of LGU Program or Project			HGDG Design Checklist Score	Total Annual Budget of the Program	GAD Budget		Lead or Responsible Office	
Sub-total C								
GRAND TOTAL (A+B+C)								
Prepared by:			Approved by:		Date:			
Chairperson, GFPS TWG			Local Chief Executive				DD/MM/YEAR	

NEW AMENDED GPB FORM (JMC 2016-01)

B. For Barangays

Gender Issue or GAD Mandate (1)	GAD Program/Project/Activity (PPA) (2)	Performance Target and Indicator (3)	GAD Budget (4)	Responsible Person (5)
CLIENT-FOCUSED				
Sub-total A				
ORGANIZATION-FOCUSED				
	-			
Sub-total B				
ATTRIBUTED PROGRAMS				
Title of LGU Program or Project HGDC Design Checklist Score	HGDC Design Checklist Score	Total Annual Budget of the Program or Project	GAD Budget	Responsible Person
Sub-total C				
Grand TOTAL				
Prepared by:	Approved by:		Date:	
<hr/> Barangay Secretary	<hr/> Punong Barangay		<hr/> DD/MM/YEAR	

2

Enabling Mechanism for Gender Mainstreaming



Mainstreaming of GAD Mechanisms at LGU levels



Creation and strengthening of GAD Focal Point System (GFPS)



Establishment and Maintenance of GAD Statistics and sex-disaggregated database



Mainstreaming gender perspective in Local Development Plans and Budget



Formulation/Enforcement and Implementation of LGU GAD Code

Priority PPAs in GAD Plans

- In identification of GAD PPAs, priority shall be given to those that address emerging and continuing issues on:
 - Provision of basic services and facilities to protect and fulfill women's human rights,
 - Women's economic empowerment
 - Participation in local governance and decision-making



LGU Compliance Monitoring, Evaluation and Audit

- DILG Monitoring of LGU Compliance to GAD institutional mechanisms
 - GAD Focal Point System/Office
 - GAD Database
 - GAD Plans and Budget
 - GAD Accomplishment Report
 - GAD Code/Ordinances
 - GAD M & E
- **DILG Review of LGU GAD Plans and Budget**
 - Compliance to 5% mandatory allocation
 - Responsiveness of GAD PPAs to GAD issues identified
- **COA annual audit**
 - judicious use of GAD Budget and
 - efficiency and effectiveness of interventions

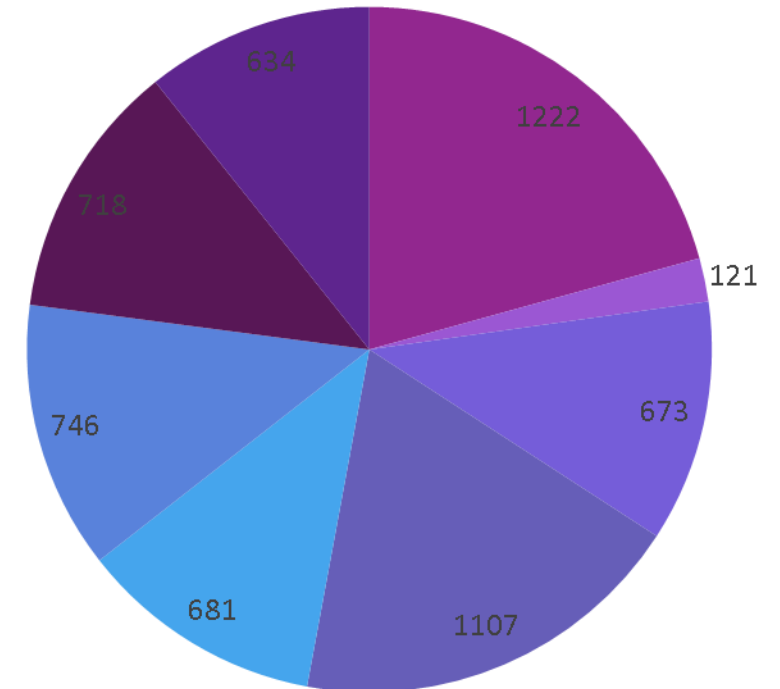




Philippines composed of 81 Provinces,
142 Cities, 1,489 Municipalities and
31,043 Barangays

LGU compliance to Institutional Mechanism December 2016

- GFPS
- GAD OFFICE
- LOCAL COUNCIL OF WOMEN
- GAD AR
- GAD BUDGET
- GAD CODE
- GAD DATABASE
- GAD M & e



72% of our LGUs have established GAD FPS, 66% have submitted GAD AR and almost 43.5% have GAD Code and ordinance. LGUs need assistance in the formulation of GAD Code, putting-up of GAD DB and installation of monitoring system, as well as the establishment of GAD Office

Philippine
Commission
on Women

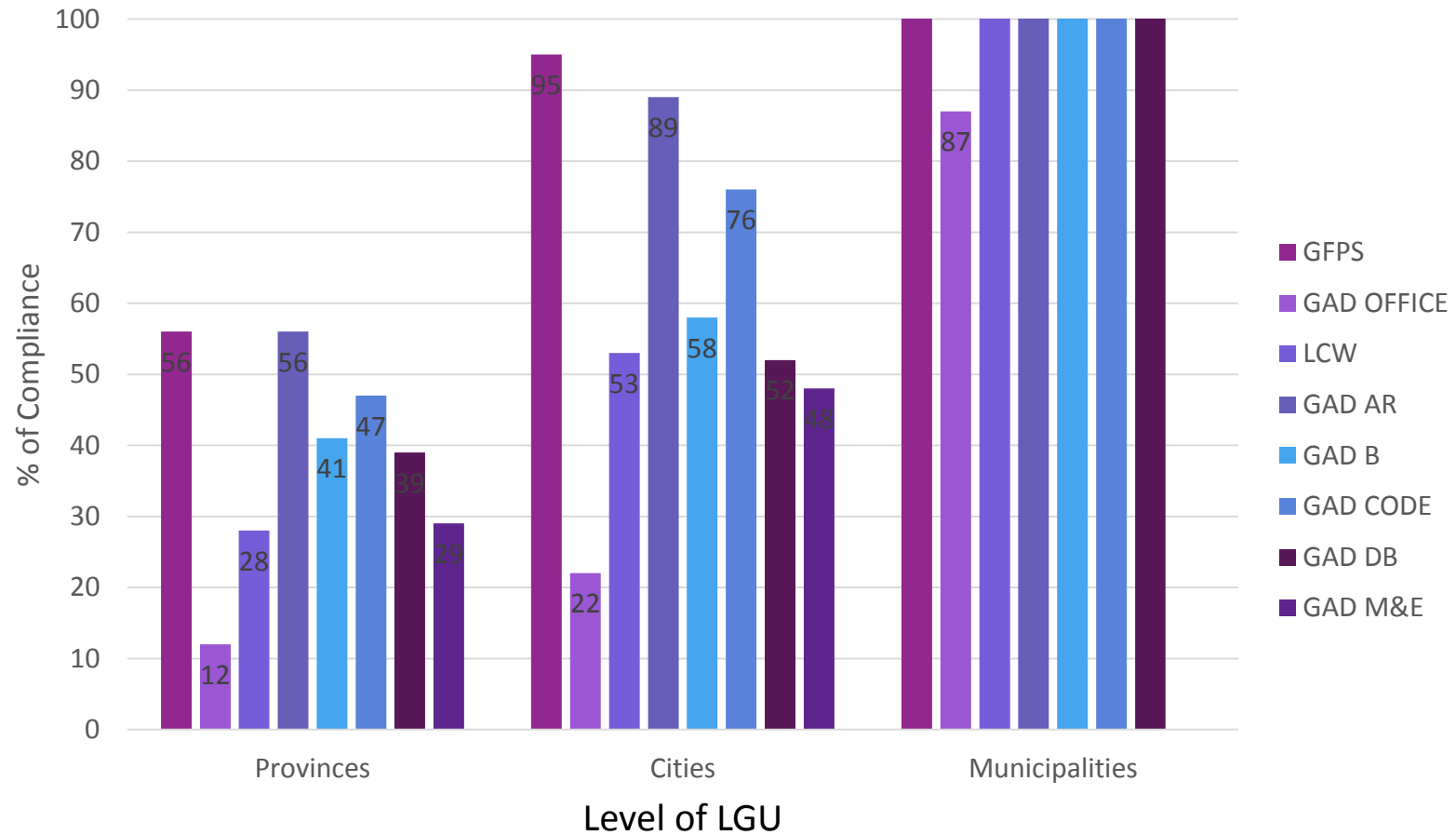


Source: https://docs.google.com/spreadsheets/d/1tT4fmiqYy8mmkJPxYDfr9DCGSg4jq_rWGyX7SRMEMX4



Across levels of LGUs, there is high level of compliance among provinces, cities and municipalities. Among the mechanisms, LGUs have high compliance on GFPS and submission of GAD Accomplishment Report, followed by GAD Code and GAD Database. A low compliance on the Local Council of Women and GAD Office

**LGU Compliance to Institutional Mechanism by LGU Level
March 2017**



Source:

https://docs.google.com/spreadsheets/d/1tT4fmiqYy8mmkJPxYDfr9DCGSg4jq_rWGyX7SRMEMX4



LGU Compliance to Institutional Mechanism in Region III December 2016

REGION III-CENTRAL LUZON

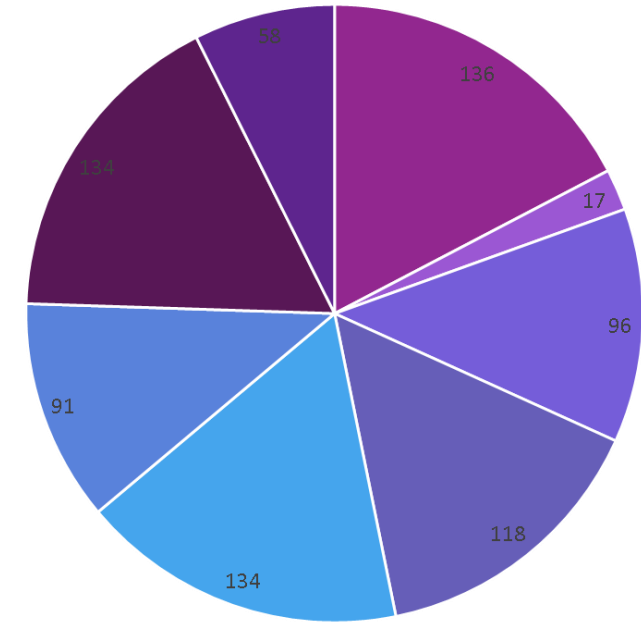
- ✓ [Aurora](#)
- ✓ [Bataan](#)
- ✓ [Bulacan](#)
- ✓ [Nueva Ecija](#)
- ✓ [Pampanga](#)
- ✓ [Tarlac](#)
- ✓ [Zambales](#)



REGION 3
CENTRAL LUZON

The LGUs in Region III Central Luzon composed of 7 Provinces, 13 Cities, 116 Municipalities and 3,102 Barangays.

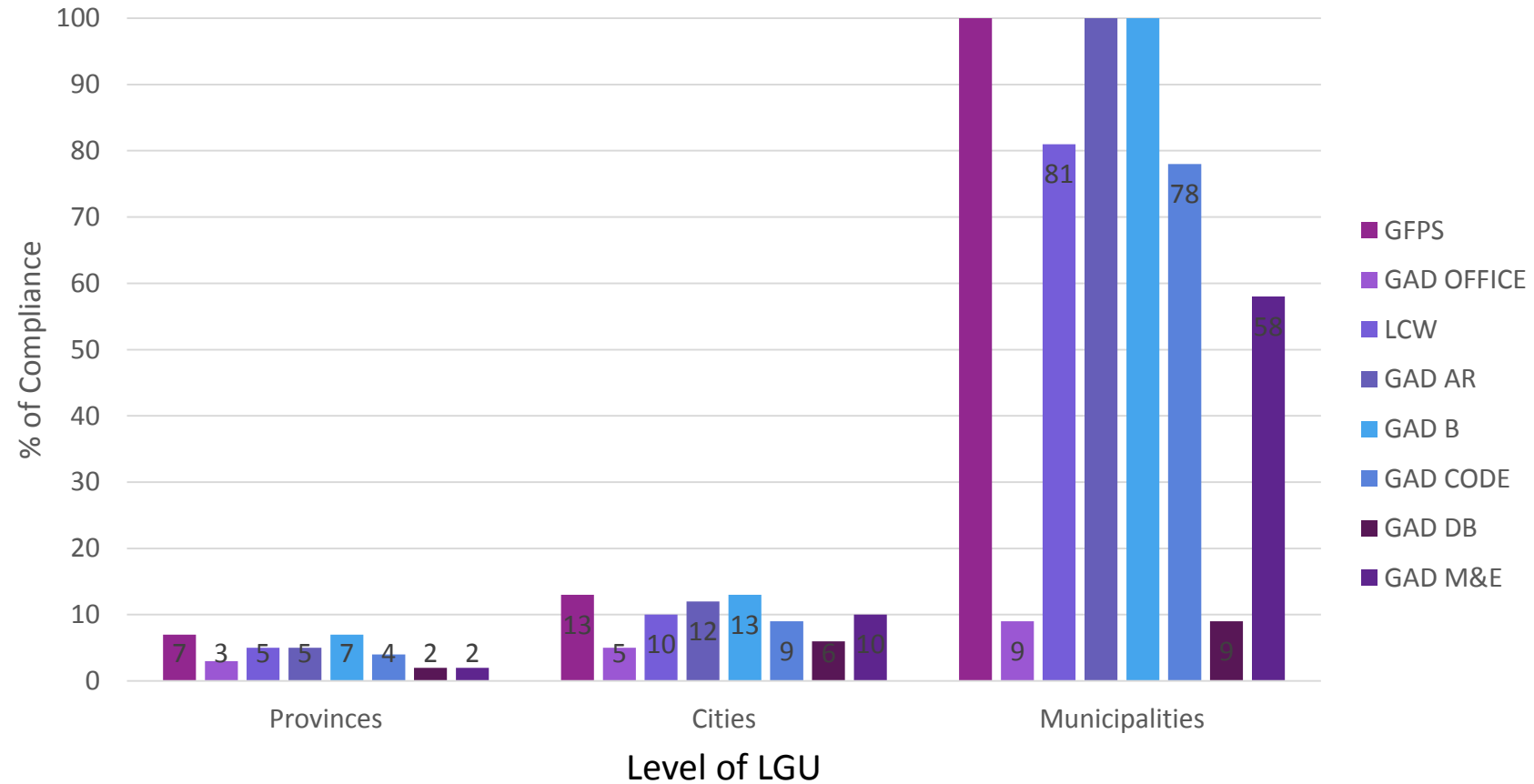
- GFPS
- GAD OFFICE
- LWC
- GAD AR
- GAD BUDGET
- GAD CODE
- GAD DB
- GAD M&E



Region III compliance of LGUs to Institutional Mechanism relatively high 100% GFPS and 98.5% Submission of GAD Plan and Budget followed by GAD AR, however only 12.2% have institutionalized the GAD Office. Also it shows that out of 136 LGUs only 12.5% or 17 have their GAD Office and 11% only on GAD Database

Among level of LGUs, Municipalities, Cities and Provinces have high level of compliance almost 100% to GFPS, GPB, &GAD AR, and very low compliance in GAD office, GAD Database and GAD Code

LGU Compliance to Institutional Mechanism by LGU Level: Region III March 2017



Summary of GPB Submission Region III

March 2017

GAD PLAN AND BUDGET

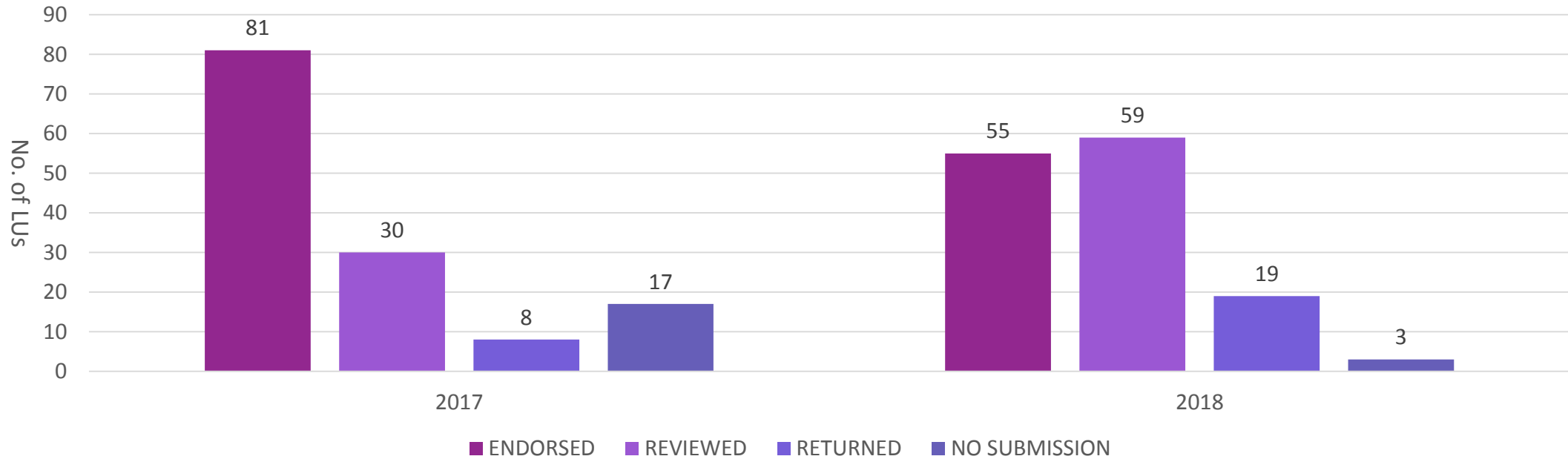


Table shows the comparative assessment on the submission of GAD Plan and Budget. It shows that there is a decrease of 40% GPB ENDORSED by the DILG compared to the 2016 data which is 59%. Also there is a decreased on the non-submission of GPB (.3.6%) compared to 12.5% in 2016, this is mainly because Enabling Mechanism on GAD were included in the Seal of Good Local Governance (SGLG) indicators.



Source: DILG Region III Data



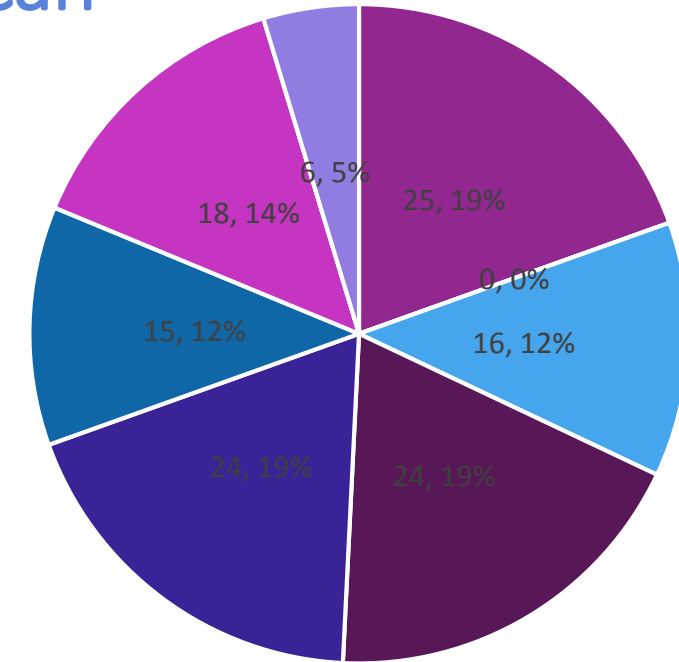
Compliance to Institutional Mechanism

Province of Bulacan

December 2016



Bulacan composed of 3 Cities, 21 Municipalities and 569 Barangays, with 278,369 hectares and more or less 3,292,071 population



■ GFPS ■ GAD OFFICE ■ LCW ■ GAD AR
■ GAD BUDGET ■ CAD CODE ■ GAD DATABASE ■ GAD M&E

100% compliance of the Province of Bulacan in Gender Mainstreaming mechanisms on GFPS, followed by submission of GAD AR, GAD Budget, and there is a very big challenge in the establishment of GAD Database, GAD Code and provision of GAD Office



Source: DILG Bulacan Data



Compliance to Institutional Mechanism by Level of LGUs

Province of Bulacan

Enabling Mechanism	Province	Cities	Municipalities	Barangay
GPFS	1	3	21	539
VAW DESKS	1	3	21	569
LOCAL COUNCIL OF WOMEN	1	2	13	265
GAD CODE	1	1	13	Not Applicable
GAD DATA BASE	1	3	15	230
GAD AR	1	3	20	278
GAD PLAN AND BUDGET	1	3	20	278
GAD MONITORING AND EVALUATION	1	1	6	0

Data Shows that the Province of Bulacan is relatively compliant to the MCW. However there is a very big challenge in the Localization at the Barangay Level. Only 48% of the Barangays submitted their GAD AR and Budget to the DILG. 40% have initially established their Data Base and 46% have their own Council of Women.

3

Lessons Learned and Major Challenges in Gender Mainstreaming at the Local Level





- Non Functional GFPS will results to non-compliance with the Mandate
- The Functionality of GFPS could not be attained overnight (series of follow-up trainings and workshops are necessary)
- Gender Responsiveness of Local Government Units are not the PRIVILEGES but a RIGHT to response on the Gender issues



- “ In GAD mainstreaming we need a strong ***political will, dedication and commitment*** to attained the GENDER EQUALITY through Gender-Responsive Budgeting”

Mayor Ferdinand R. Abesamis

Penaranda, Nueva Ecija

January 28, 2017



Major Challenges in Gender-Responsive Budgeting



Policy

- There is a need to update existing guidelines on GPB
- LGUs do not include GAD in their Local Development Agenda
- Review and Endorsement of GAD Plan and Budget(One Man Team)



People

- Limited Capacity of the LGU GAD Focal Point System
- Passive attitude of the Local Government Officials
- Misconceptions on the importance of Gender and Development

Major Challenges in Gender-Responsive Budgeting



Enabling Mechanisms

- *Limited Sex Disaggregated Database*
- Low compliance on the submission of GAD Plan and Budget and AR
- Non integration of M & E in their PAPs



PAPs

- No gender impact assessment of GAD programs implemented conducted (GIA)
- Limited capacities of LGU on how to integrate GAD perspective in the major programs (use of HGDG)



THANK YOU!

**Office of the President
PHILIPPINE COMMISSION ON WOMEN (PCW)**

1145 J. P. Laurel St., San Miguel, Manila 1005

Telephone Numbers: +632.7354955, 735.1654 local 125-6

Fax Number: +632.7364449

Email Addresses: edo@pcw.gov.ph, exec.dir@pcw.gov.ph

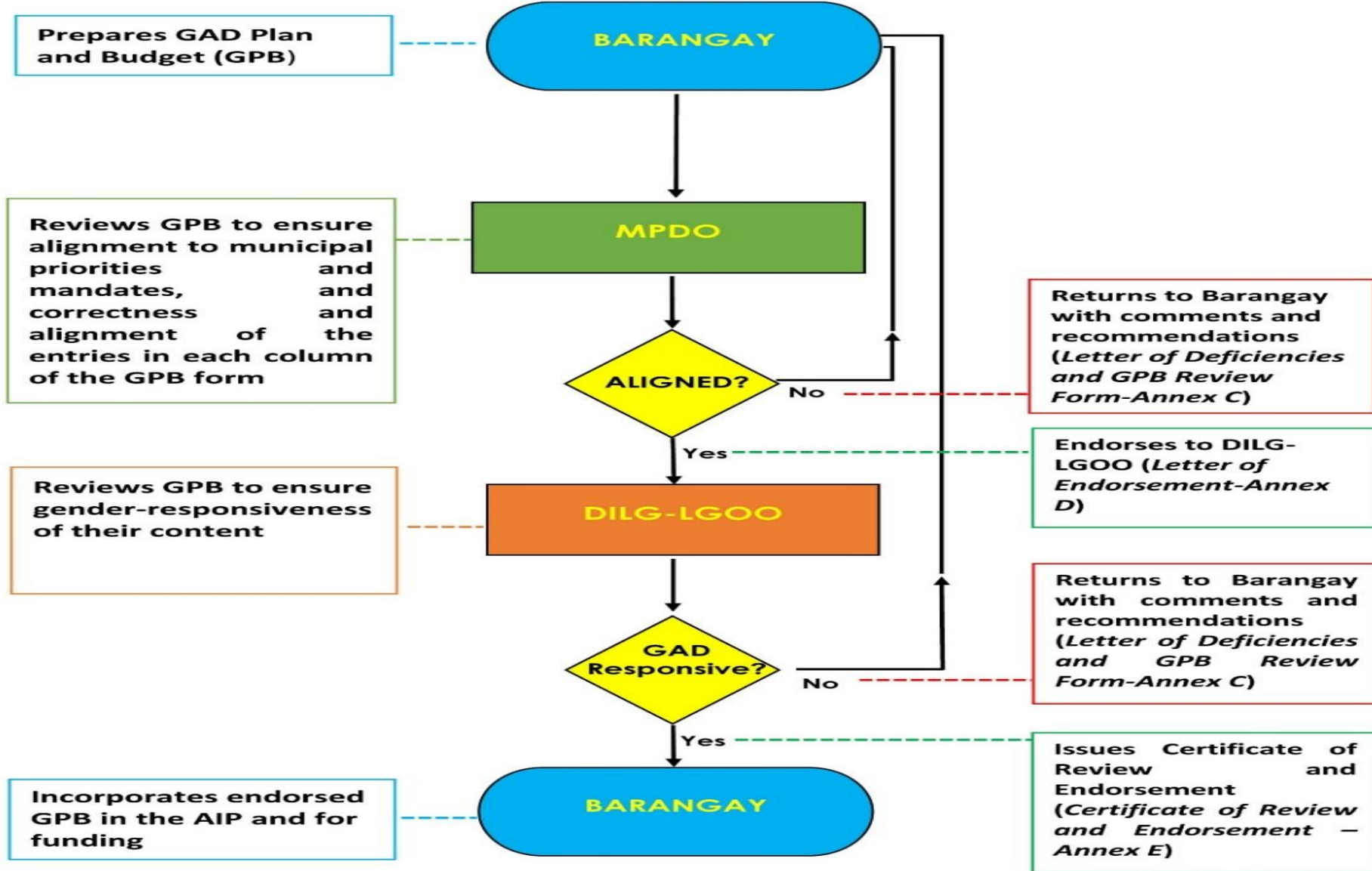
Website: www.pcw.gov.ph



C.6 SUBMISSION, REVIEW & APPROVAL OF LGU GAD PLANS & BUDGET



SUBMISSION, REVIEW AND APPROVAL OF GAD PLANS AND BUDGET Barangay Level

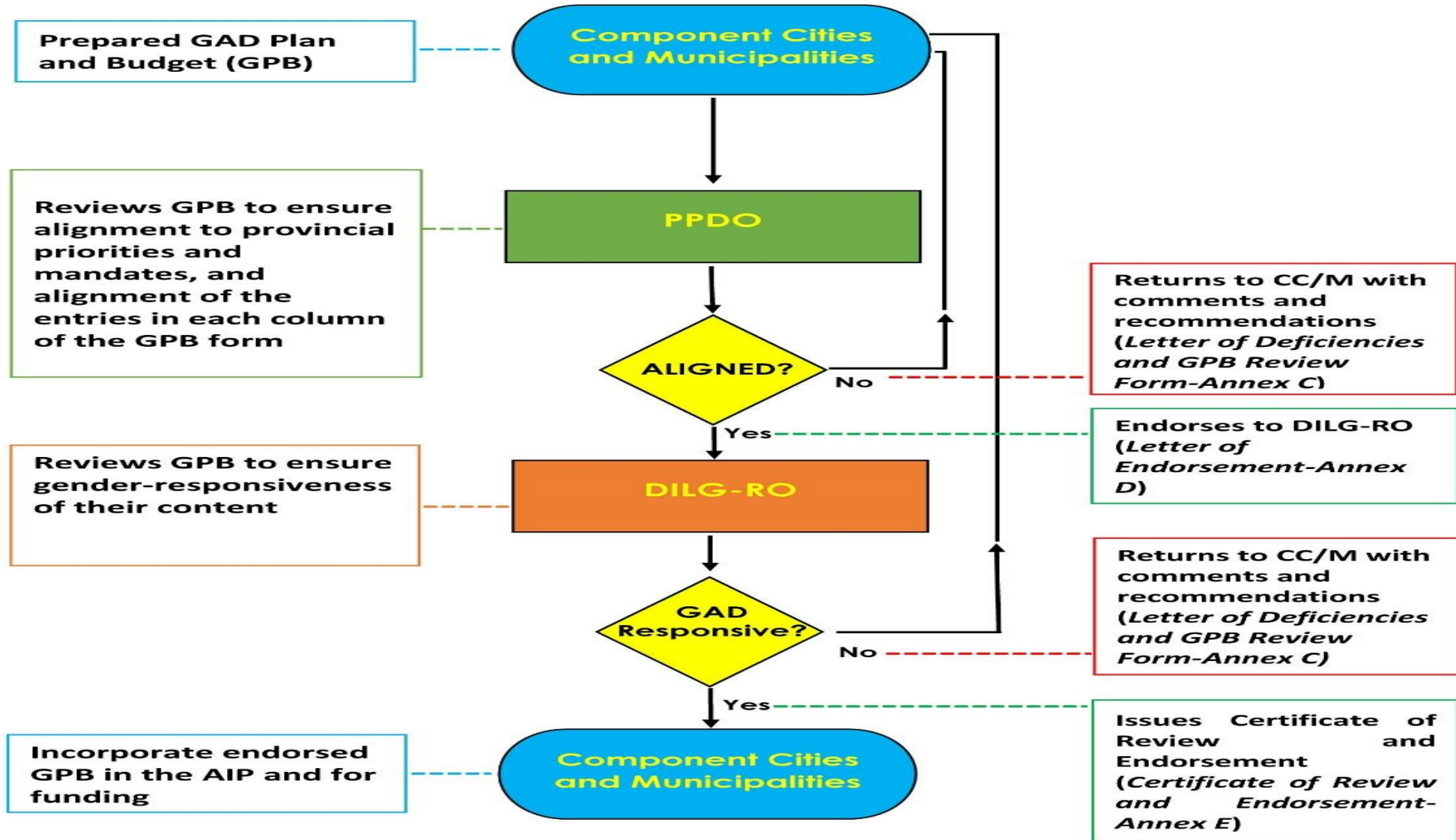




C.6 SUBMISSION, REVIEW & APPROVAL OF LGU GAD PLANS & BUDGET



SUBMISSION, REVIEW AND APPROVAL OF GAD PLANS AND BUDGET COMPONENT CITY/MUNICIPALITY LEVEL





C.6 SUBMISSION, REVIEW & APPROVAL OF LGU GAD PLANS & BUDGET



SUBMISSION, REVIEW AND APPROVAL OF GAD PLANS AND BUDGET
-PROVINCE/HUC/ICC AND MUNICIPALITIES IN METRO MANILA LEVEL

