

# **Status and Plans on Space Applications for Sustainable Development : Thailand**

**Tatiya Chuentragun**

**Acting Deputy Executive Director**

**Geo-Informatics and Space Technology Development Agency  
(GISTDA)**

**THAILAND**

**18 August 2020**



# Current status on policy, long term-plan:

## ‘Thailand’s 20-year National Strategy’

4.6 Improving paradigm for determining the country’s future by promoting a sense of environmental stewardship among Thai people; **developing effective tools and mechanisms** to manage natural resources and the environment for quality future growth; establishing and improving justice process related to natural resources and environmental management; promoting environmental democracy as a way to solve problems and reduce disputes; and implementing project of developing the paradigms to guide the future country

# Implementation of Asia-Pacific Plan of Action on Space Applications for Sustainable Development (2018-2030)

## On going activities

- **AIP**

Pilot site : 1. Nan Province  
2. Eastern Economic Corridor (EEC)

# AIP

ACTIONABLE  
INTELLIGENCE  
POLICY



## AIP-EEC: The Land of 5 Zero's and 4 Happiness's

Eastern Seaboard (ESB)



Eastern Economic Corridor (EEC)



Economic grows -> economic/social/resources consumption disparities

AIP Platform to support the policy-making corresponding to the carrying capacity for sustainable development of EEC

Data and input



Data from people in EEC

ISP

Innovative Singularity Platform



Policy and Investment Plan  
BMN / NRD 2C Development Activities  
Crowdsource IOTs  
Statistics RS & GIS

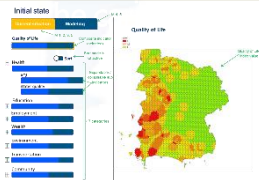


What AIP can do

Machine Learning / Data Analytics

- ✓ Identify problems and challenges corresponding to the context of area
- ✓ Impact analysis in various dimensions
- ✓ Suggest policies, plans and activities

EEC Indicators



SDGs Achievement

5 Zero's

Zero Poverty

Zero Waste

Zero Water Shortage

Zero Loss of Shoreline

Zero Emission



Expected Value

4 Happiness's

- Sustainable Wealth
- Better Quality of Life
- More Equity
- Good Health



Economic/ Social/ environmental situation in EEC area  
Visualise the problems and suggest solutions



www.gistda.or.th



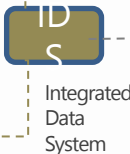
# AIP

ACTIONABLE  
INTELLIGENCE  
POLICY

Data and input  
for AIP



Opinions and  
satisfaction



Policy and  
Investment  
Proi  
Science Proj.  
Statistics

BMN / NRD 2C  
Development  
Activities  
Water Body  
RS & GIS



Zero Poverty

Annual incomes of  
farmers are 75,900 Thai  
baht per acre



Watershed forest restoration

The watershed forest area  
increase to 90 percent of  
the forest area.



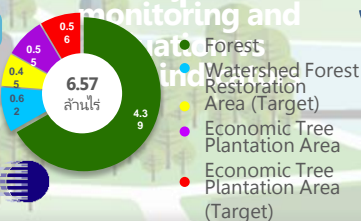
What AIP can  
do

Machine Learning /  
Data Analytics

- ✓ Consistency of  
Activities vs  
Policies
- ✓ Scenario and  
impact analysis  
prior the  
policy



Action Plan  
Development  
monitoring and  
evaluation



Expected  
outcomes

Reallocation

การจัดสรรที่ดินทำกิน  
ตามรอบ คัดเลือก

Reoccupation

การปรับเปลี่ยนอาชีพตาม  
ความเหมาะสมทางกาย

Reforestation

การฟื้นฟูทรัพยากร  
ป่าต้นน้ำ

Land right  
Water for  
agriculture  
and

Suitable  
occupations  
Creating value  
activities

Methodology  
Area and  
location for  
reforestation

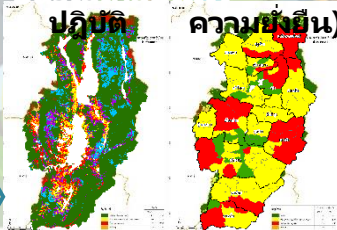
Define the  
area-based  
activities

Ultimate Goals

4 Sustainability's  
Land & Water  
Sustainability  
Economic  
Sustainability  
Ecological  
Sustainability

Actions  
กิจกรรม  
ปฏิบัติ

Indicator  
(ตัวชี้วัด  
ความยั่งยืน)



# Contributions in implementations

## Plans

- **Expansion of GISTDA's Crop Monitoring System**

Implementing partner : UN-ESCAP

Participating countries : China, Cambodia, Lao PDR and Myanmar

Duration : January 2021 – December 2022

Key activities :

1. Personal training/workshop
2. Technical exchange
3. Platform building



# Contributions in implementations

## Plans

- **Knowledges sharing on COVID-19 platform development**


Implementing partner : UN-ESCAP

Participating countries : ASEAN countries

Duration : September – December 2020

Key activities :

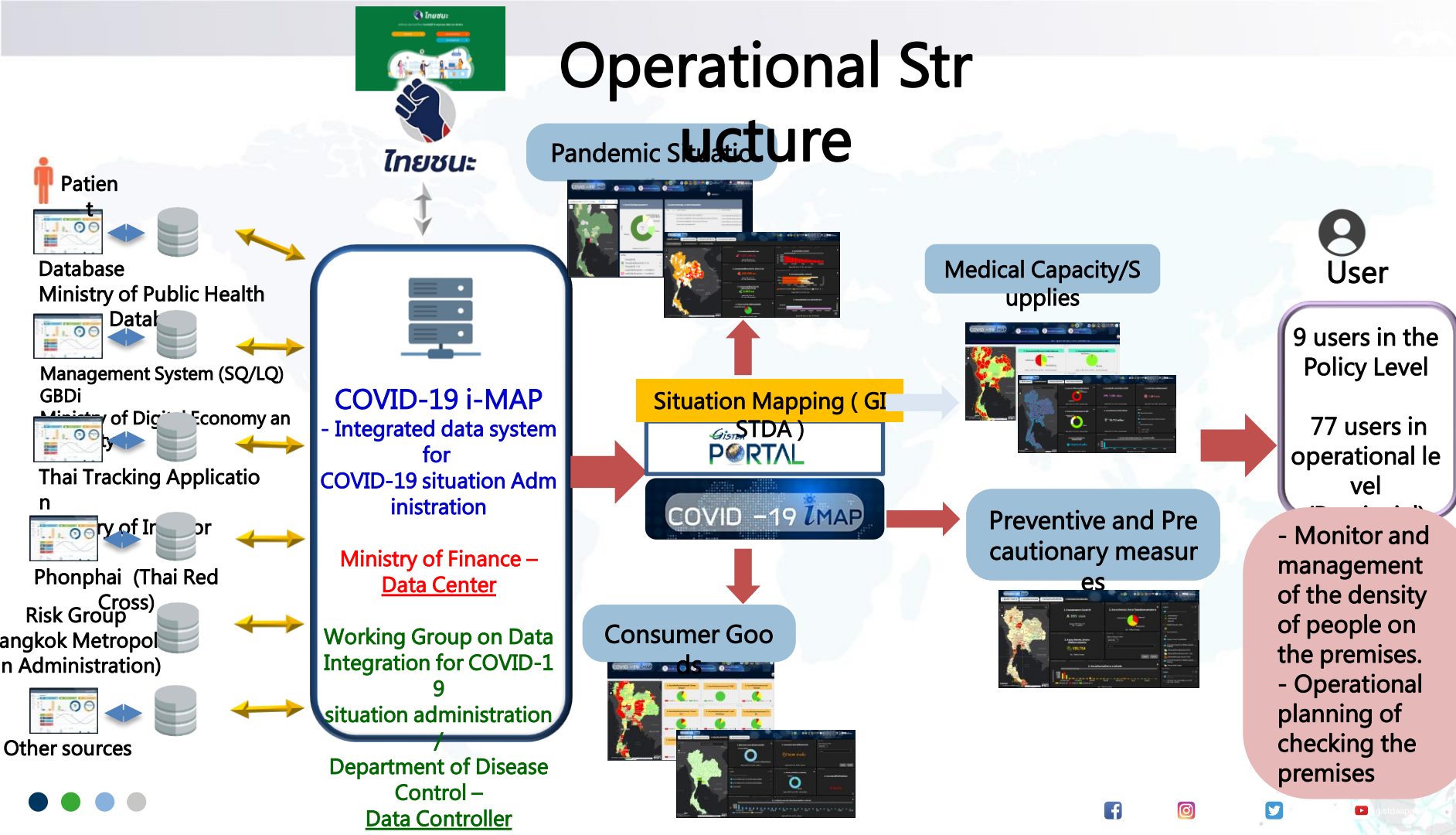
1. Personal training/workshop
2. Technical exchange
3. Platform building (prototype)

A faint, light blue world map is visible in the background of the slide, centered behind the main text.

# **Good practice in combating COVID-19 and lesson learns**



# Operational Structure



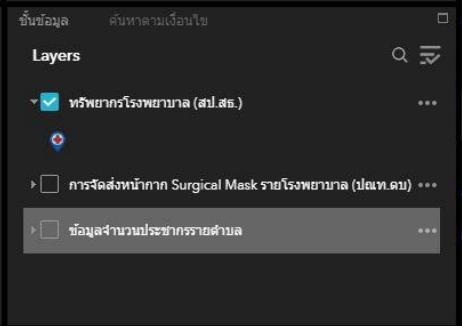
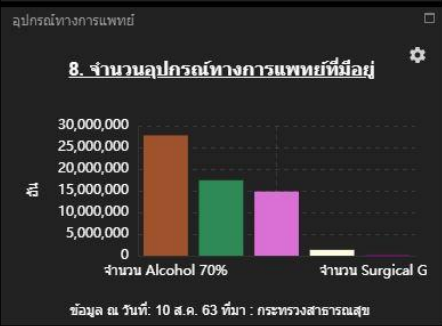
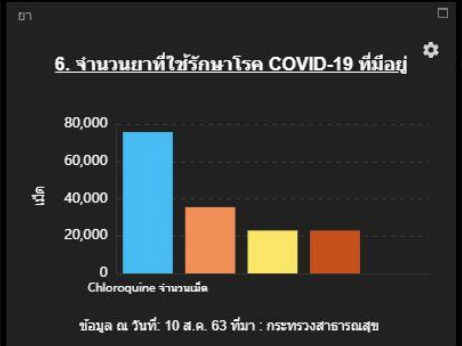
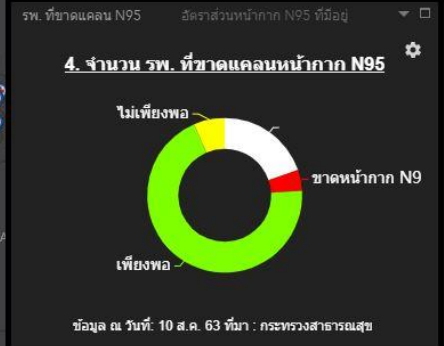
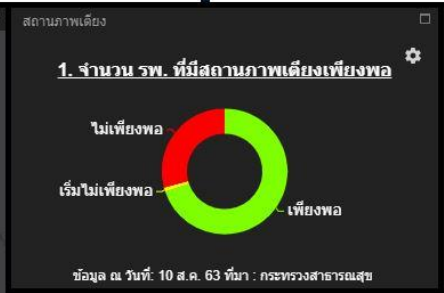
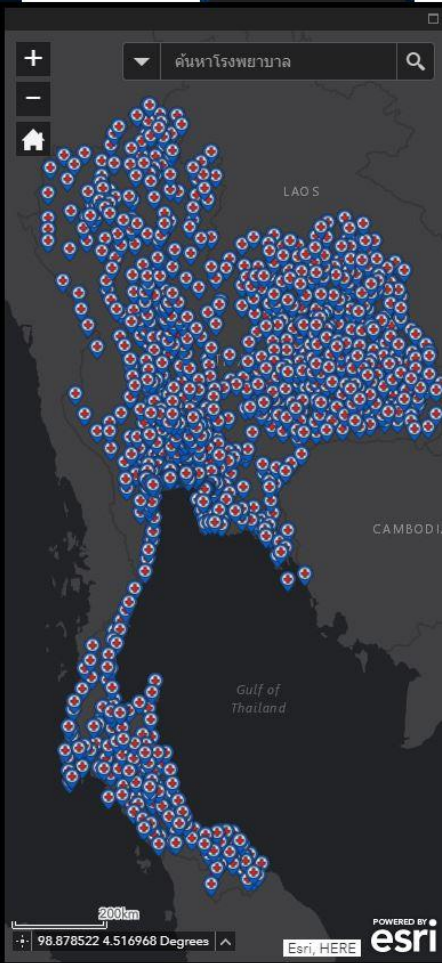


# COVID-19 MAP

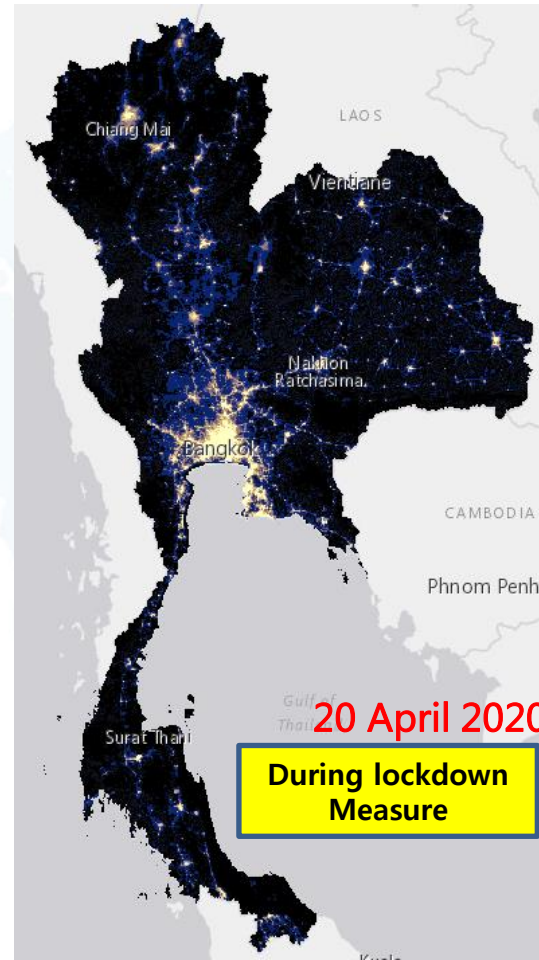
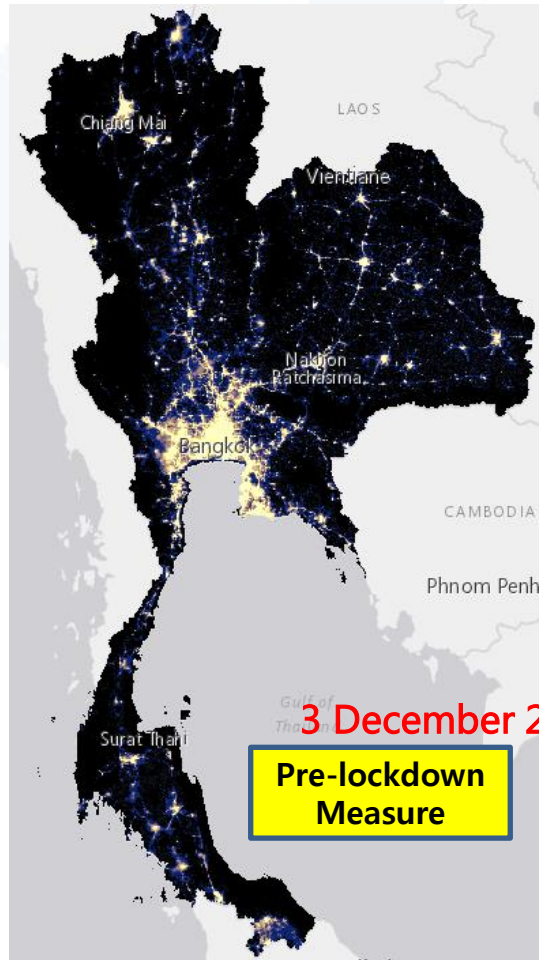


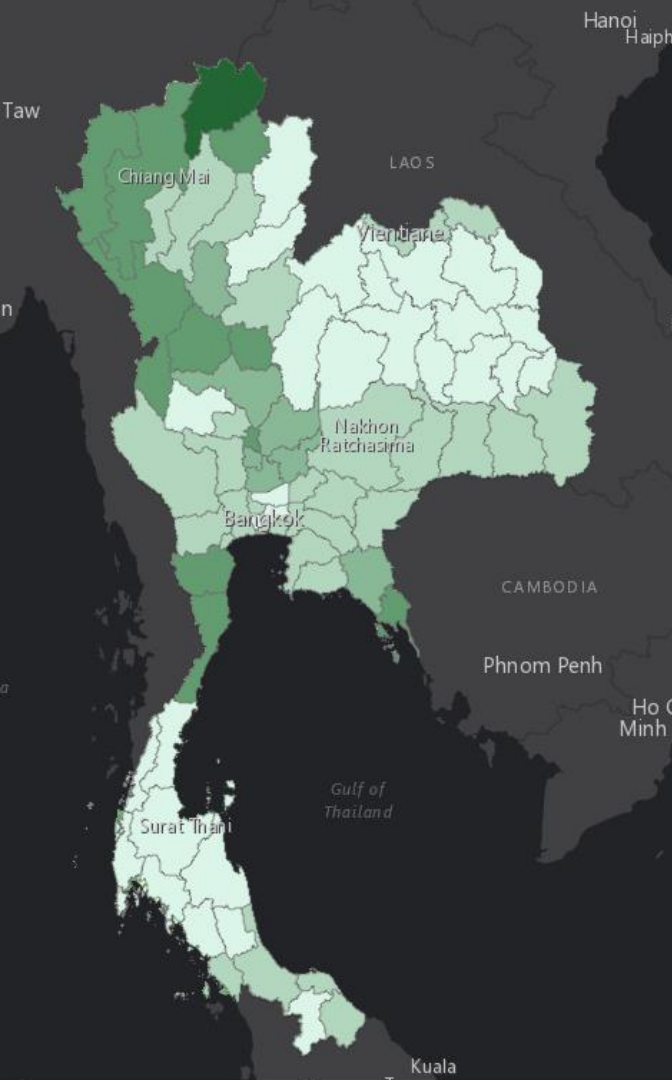
วิธีโอแพะแก่การใช้งาน | ดาวบิลด์คู่มือการใช้งาน

- 1. ผู้ติดเชื้อ COVID-19
- 2. อุปกรณ์ทางการแพทย์
- 3. สืบค้นอุปกรณ์โรคที่จำเป็น
- 4. ติดตามผลการรณรงค์คลาย | ไทยชนะ

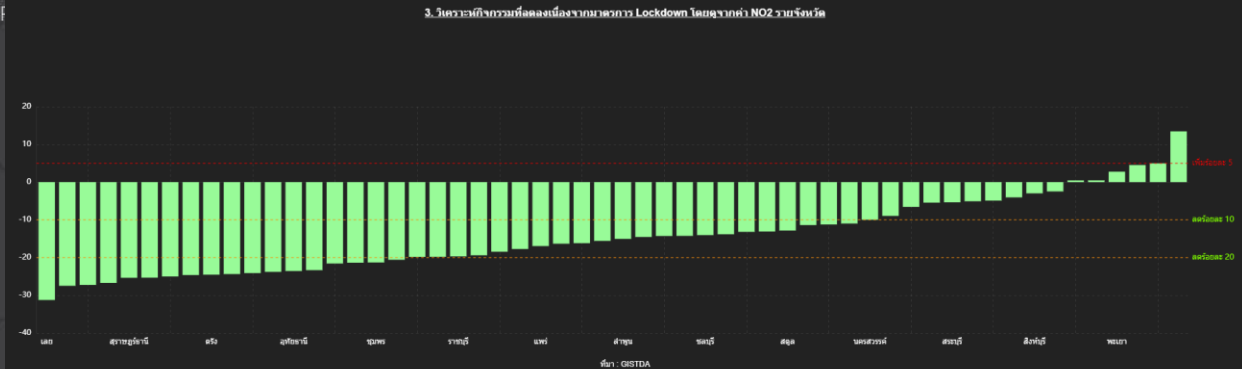


# Reduced Night Light Image (Suomi NP)





# Activity Analysis during Lockdown Measures (NO<sub>2</sub>)



☒ การวิเคราะห์กิจกรรมที่ลดลงเนื่องจากมาตรการ Lockdown โดยดูจากค่า NO<sub>2</sub>

Dif

- เพิ่มขึ้น มากกว่าร้อยละ 10
- เพิ่มขึ้น ร้อยละ 5-10
- เปลี่ยนแปลงเล็กน้อย
- ลดลง ร้อยละ 5-10
- ลดลงร้อยละ 10-20
- ลดลง มากกว่าร้อยละ 20

# Thank you for your attention

Tatiya Chuentragun  
Email: [tatiya@gistda.or.th](mailto:tatiya@gistda.or.th)