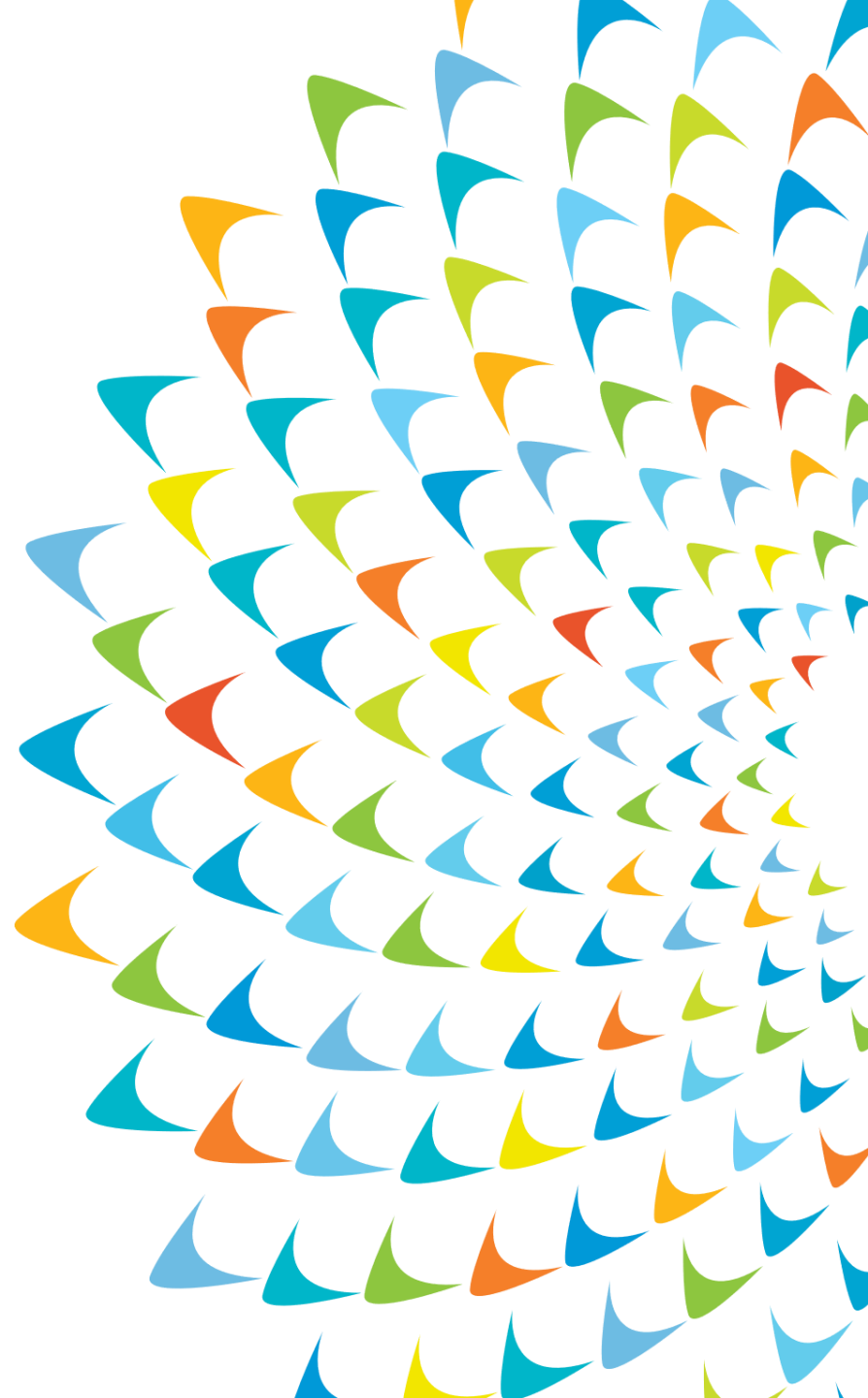




# Strategy 2030: Implication for Rural Road Transport

Dr Michael Anyala  
Senior Road Asset Management Specialist  
Transport Sector Group, ADB





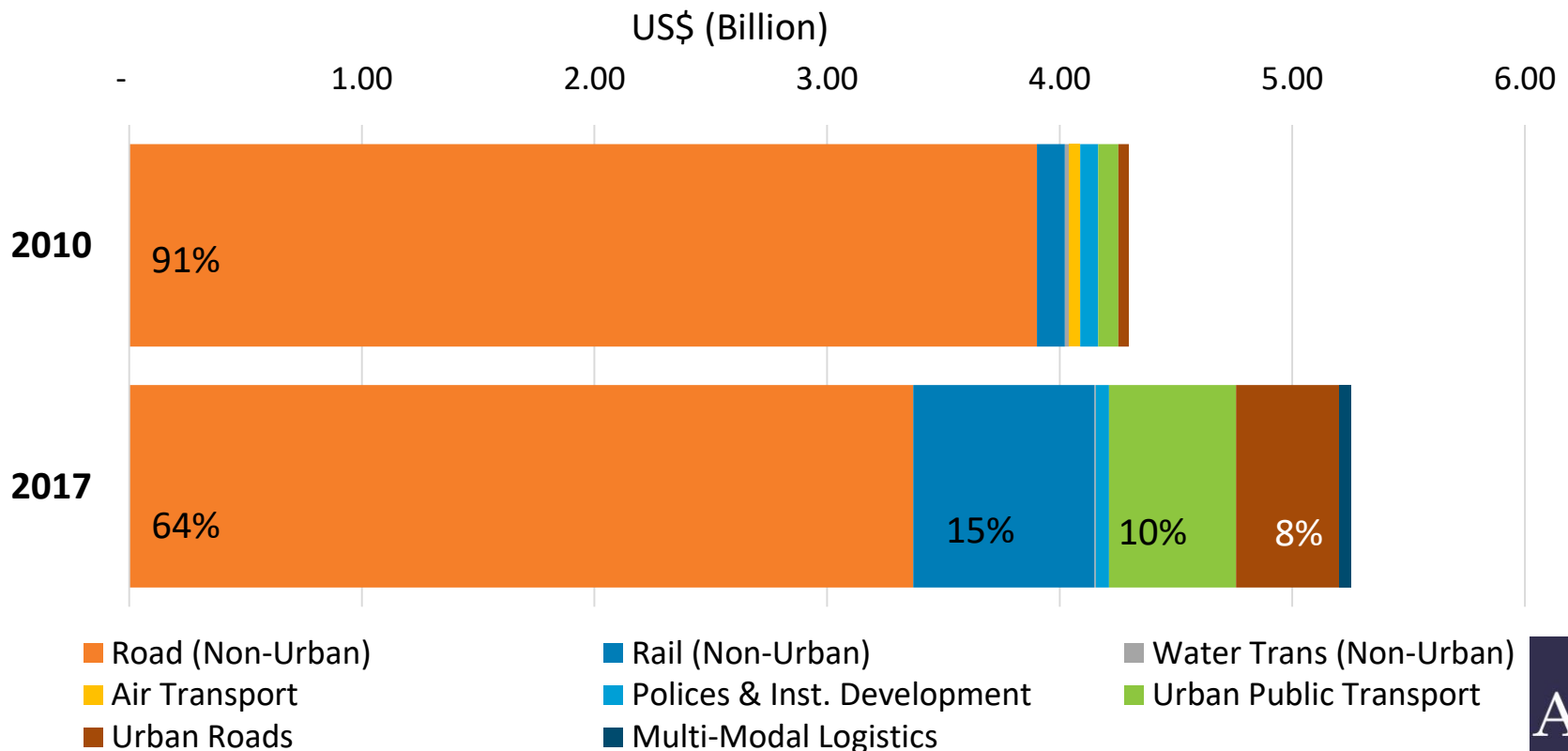
# Outline

1. Background
2. Strategy 2030 Operation Priorities
3. Mainstreaming Emerging Trends
4. Summary



# Background

- Transport is the largest sector in ADB
- 29% estimated commitments, 2019 – 2021
- Sustainable Transport Initiative - Operational Plan (2010 – 2020)





# Transport Sector Contribution

Priorities	Road / Transport Sector Contributions
1. Addressing remaining poverty	<ul style="list-style-type: none"><li>• Improving rural access and connectivity</li><li>• Regional connectivity</li><li>• Equitable access and mobility in cities</li></ul>
2. Accelerating Progress in Gender Equality	<ul style="list-style-type: none"><li>• Rural roads with community employment opportunities</li><li>• Consideration of safety and mobility for all</li><li>• Achieve targets to promote gender equality</li></ul>
3. Tackling Climate Change and Building Disaster Resilience	<ul style="list-style-type: none"><li>• Achieve climate change targets in transport projects</li><li>• Promote low emission approaches and modes</li><li>• Embed climate resilience in designs and maintenance</li></ul>



# Transport Sector Contribution

Priorities	Road / Transport Sector Contributions
4. Making Cities more Livable	<ul style="list-style-type: none"><li>• Develop integrated transport plans</li><li>• Continue growth of urban transport sub-sector</li></ul>
5. Promoting Rural Development and Food Security	<ul style="list-style-type: none"><li>• Improve market connectivity, focus on rural roads.</li><li>• Re-strengthen rural transport focus, including links to other sectors</li><li>• Rural roads, tracks and waterways</li></ul>
6. Strengthening Governance and Institutional Capacity	<ul style="list-style-type: none"><li>• Support DMCs in embedding asset management</li><li>• Strengthen service delivery and improve operation and maintenance</li><li>• Utilize financial modalities that are best suited</li><li>• Build capacity and strengthen institutions</li></ul>
6. Fostering Regional Cooperation and Integration	<ul style="list-style-type: none"><li>• Improving regional transport connectivity</li><li>• Support for regional programs</li></ul>



# Mainstreaming Emerging Trends

- Design and Construction
  - Updating design standards for climate change
  - Promoting use of BIM on major projects
  - Integrating water management and climate change adaptation in design, construction and maintenance
- Asset Management and ITS
  - Digital twin
  - Mobile based applications for estimating travel demand and monitoring asset performance
  - Applying drones
- E-vehicles



# Updating Design Standards

- Climate change adjustment for detailed engineering design.



*Source: ADB*



# 'Green Roads for Water' Initiative

- Roads that have secure transport functions
- Roads that actively increase climate resilience
  - Roads that do not do harm to water management but instead are instruments for water management
  - Roads that are used for flood protection and flood relief
  - Roads that stem erosion and promote good land management
  - Roads side vegetation that sequesters carbon, controls dust and filters effluents
- Measures are low costs
- High rate of return



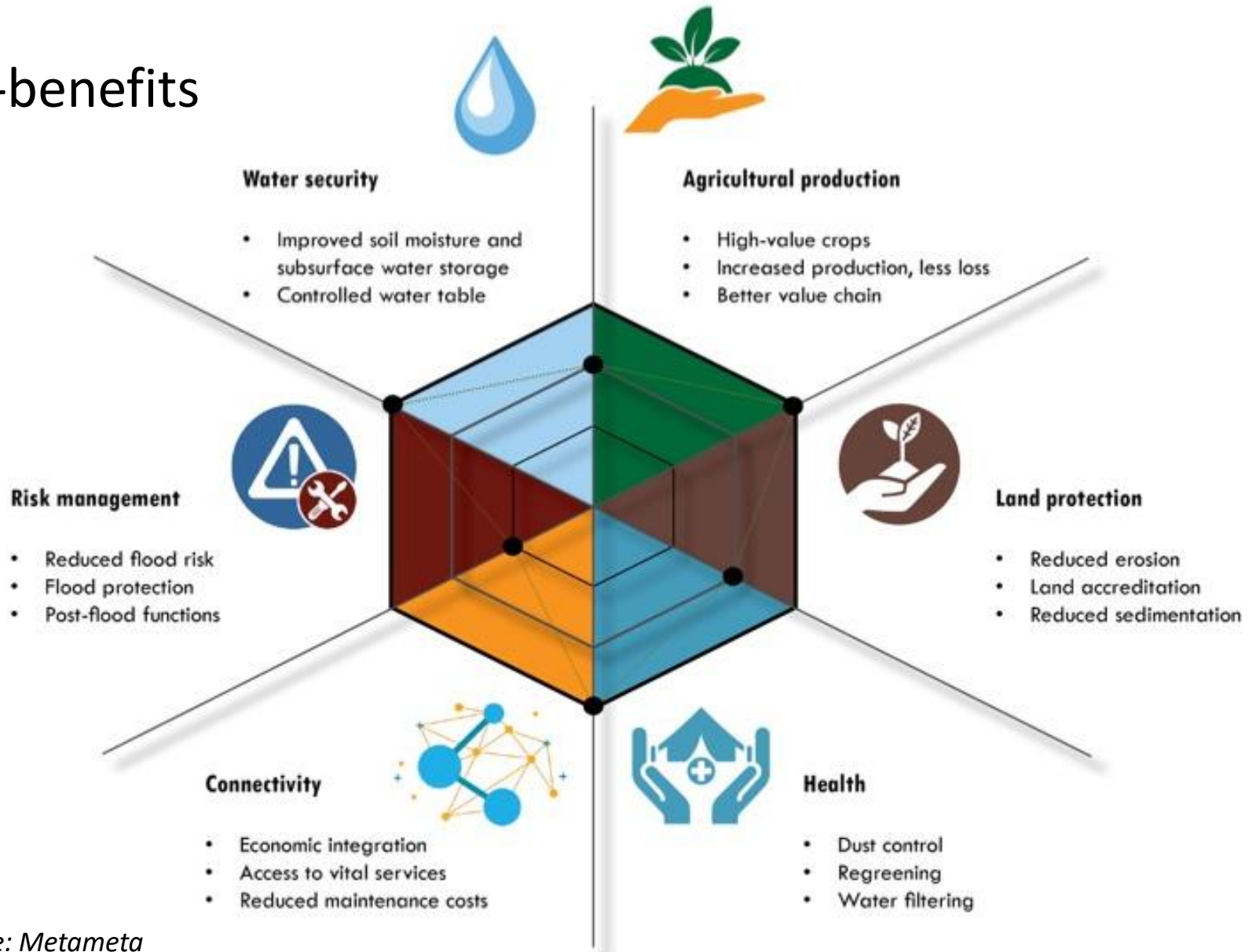
Source: Metameta





# 'Green Roads for Water' Initiative

- Co-benefits

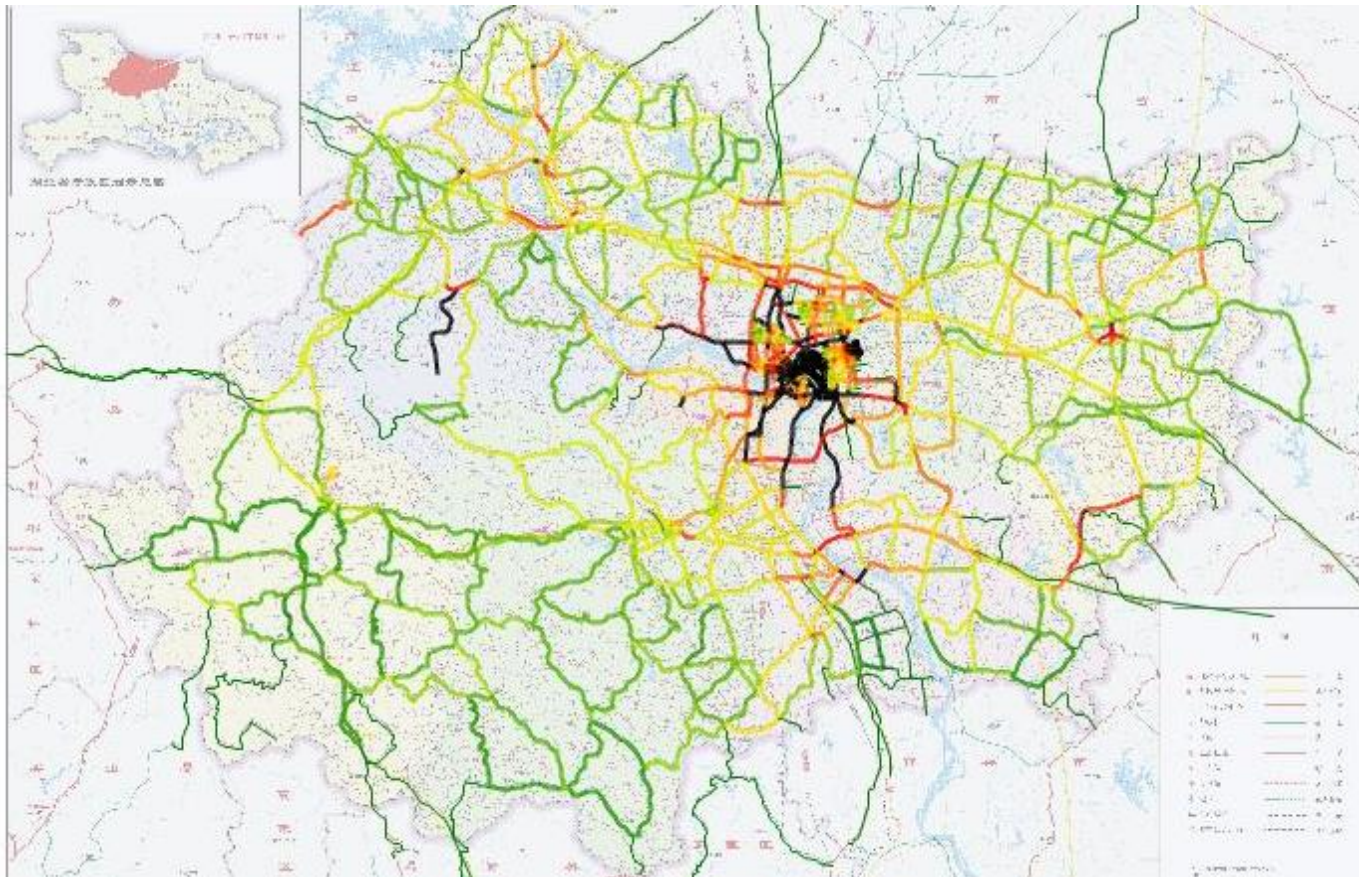


Source: Metameta



# Estimating Travel Demand from Mobile Phone Data

- Piloting use of mobile digital devices for estimating traffic demand and road asset management



Traffic volumes on individual roads



# Summary

1. Stronger rural transport focus
2. Effective programs and projects
3. Shift from construction of infrastructure to maintenance and operations of transport systems
4. Financial modalities that are appropriate: PBL, RBL
5. One ADB approach



Thank you.

