

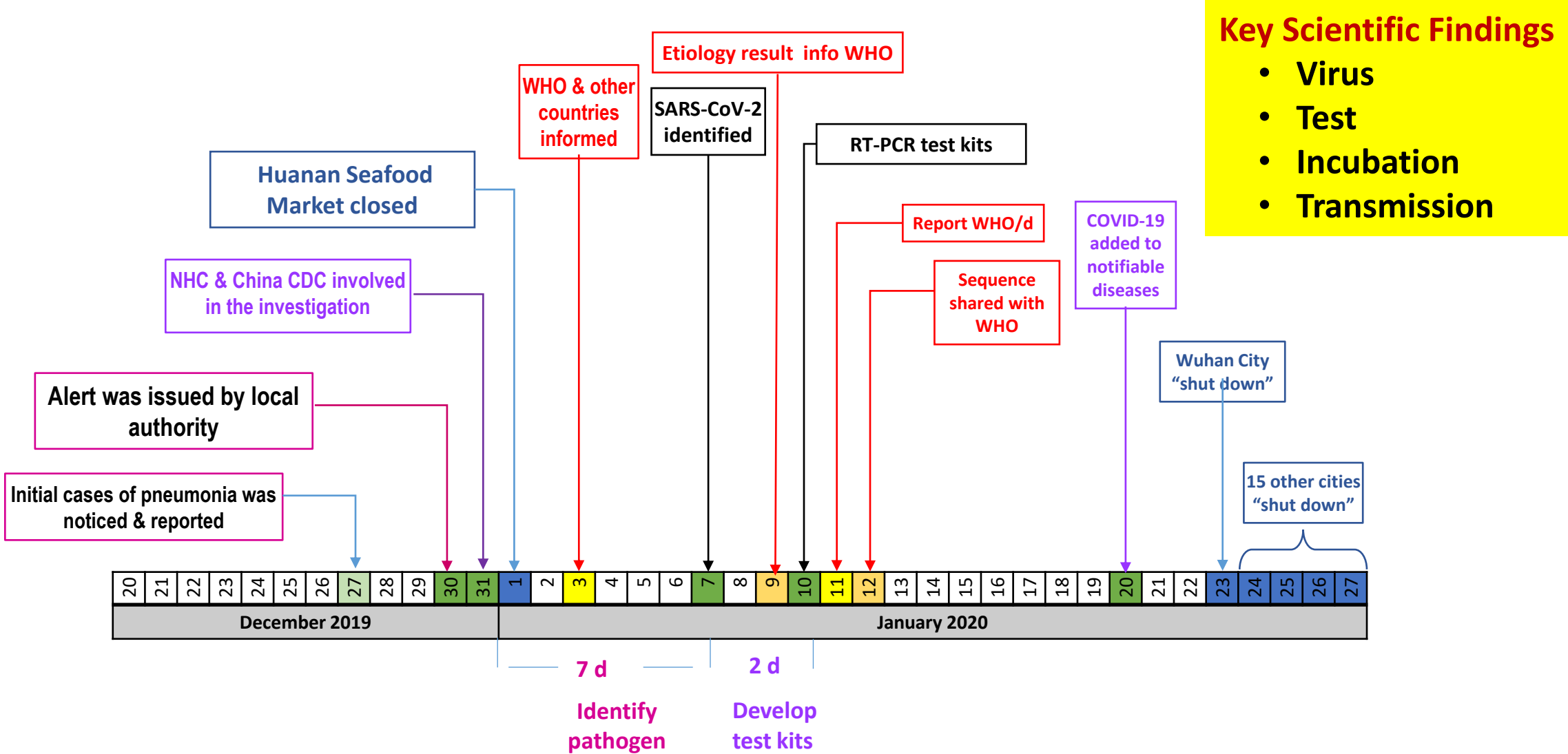
China's Response to COVID-19

Zunyou Wu

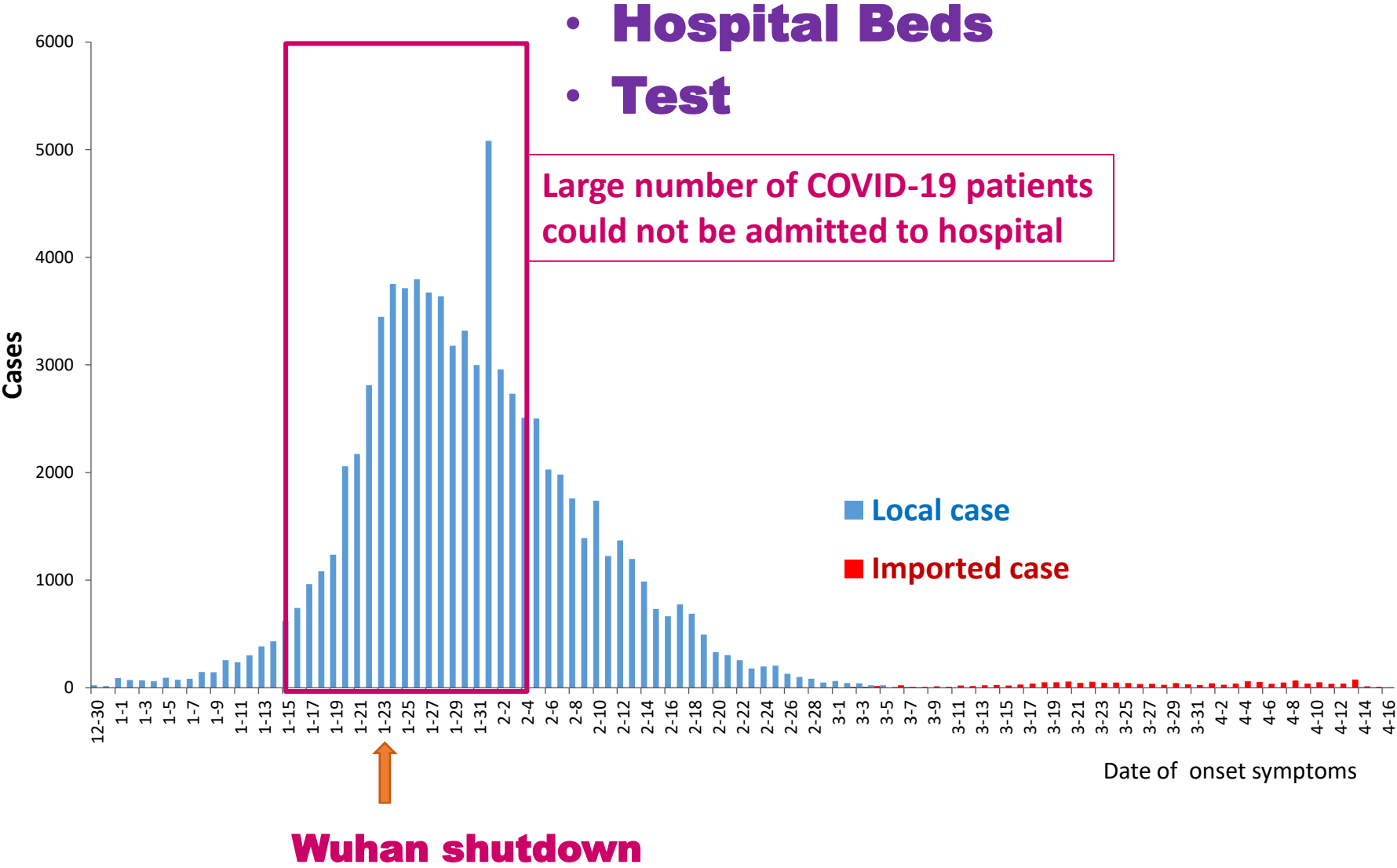
Chief Epidemiologist China CDC

2020.07.02

Early Events



Bottlenecks in the early outbreak



China uses fundamental public health measures...

- **Universal population measures**
- **Case isolation & management**
- **Close contact quarantine**
- **Suspension of public gatherings**
- **Movement restrictions**

Differentiation of Levels of Care & Isolation

Category	Facilities
Close contact	Home/Hotel → HOTEL
Suspected case	General hospital (individual ward)
Mild/Moderate	Fangcang Shelter Hospital
Severe	General hospital (w/ Inf. Dis ward)
Critical	Designated hospital

Mild/moderate cases accounted for 80% of total diagnosed cases

Fangcang Shelter Hospitals

FIVE functions

- 1. Isolation
- 2. Triage
- 3. Basic Supportive Medical Care
- 4. Daily Monitoring & Rapid Referral
- 5. Essential Living Accommodation & Social Engagement



Activities in Shelter Hospitals

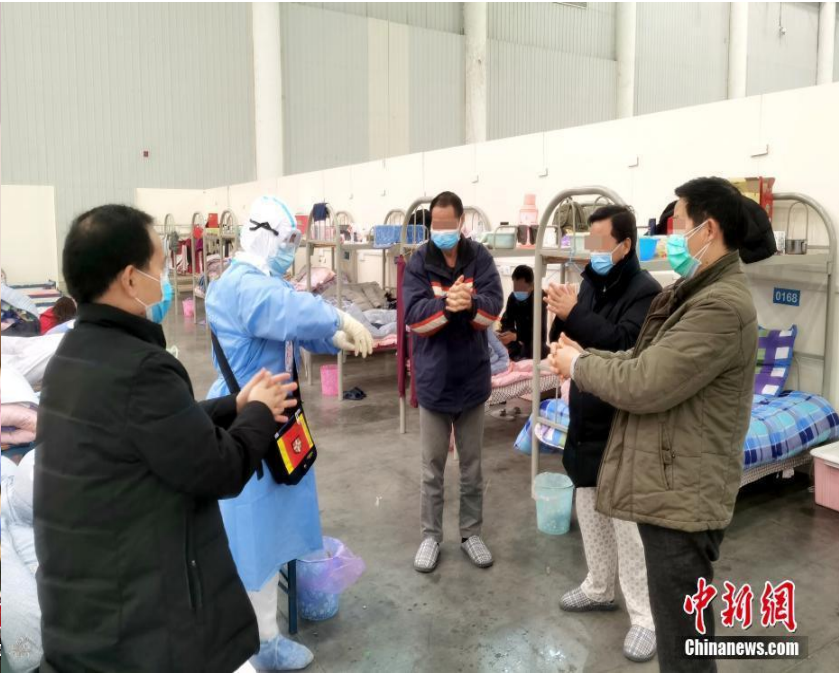
Taking Oxygen



Daily Monitoring



Training on Hand Washing



Advantages vs Disadvantages of Fangcang Shelter Hospitals

Advantages:

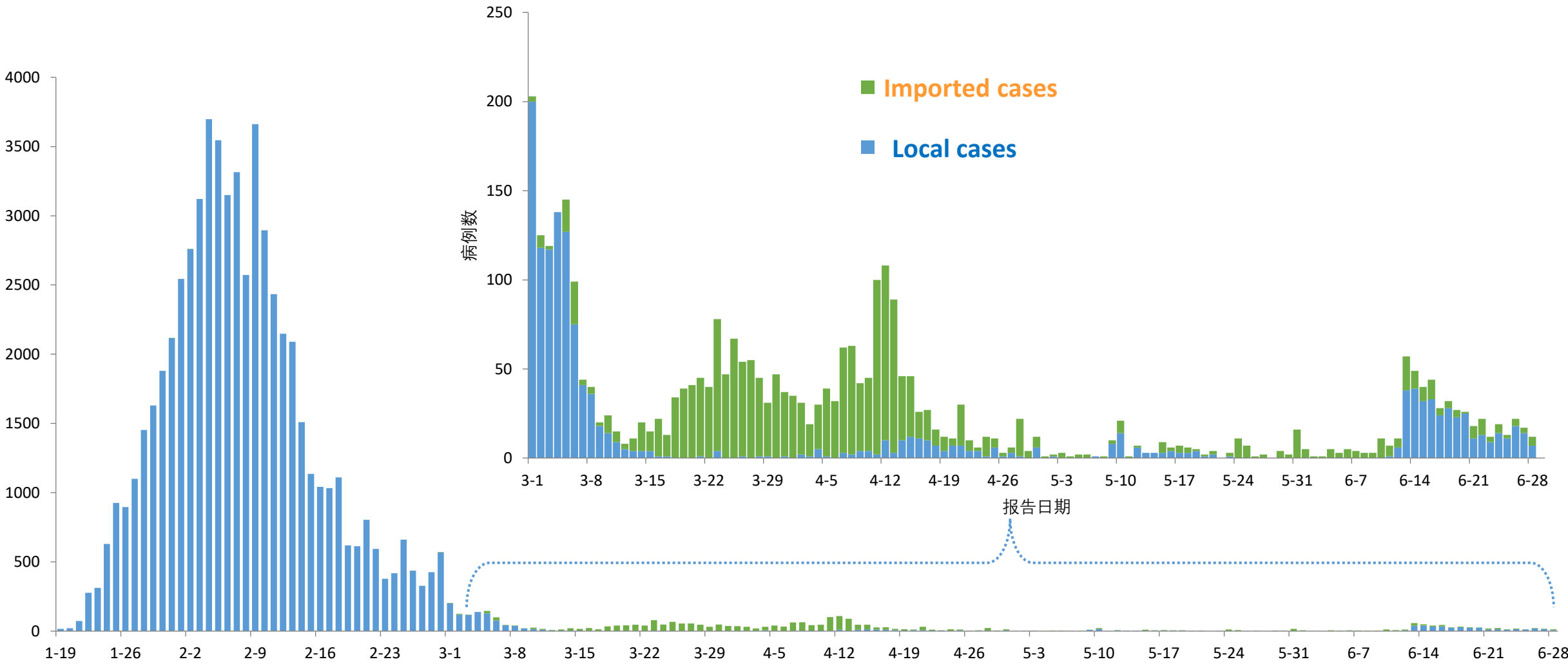
- **Rapid construction:** 2-3 days
- **Massive scale:** Bed capacity in thousands
- **Low cost:** Low ratio of health workers to patients

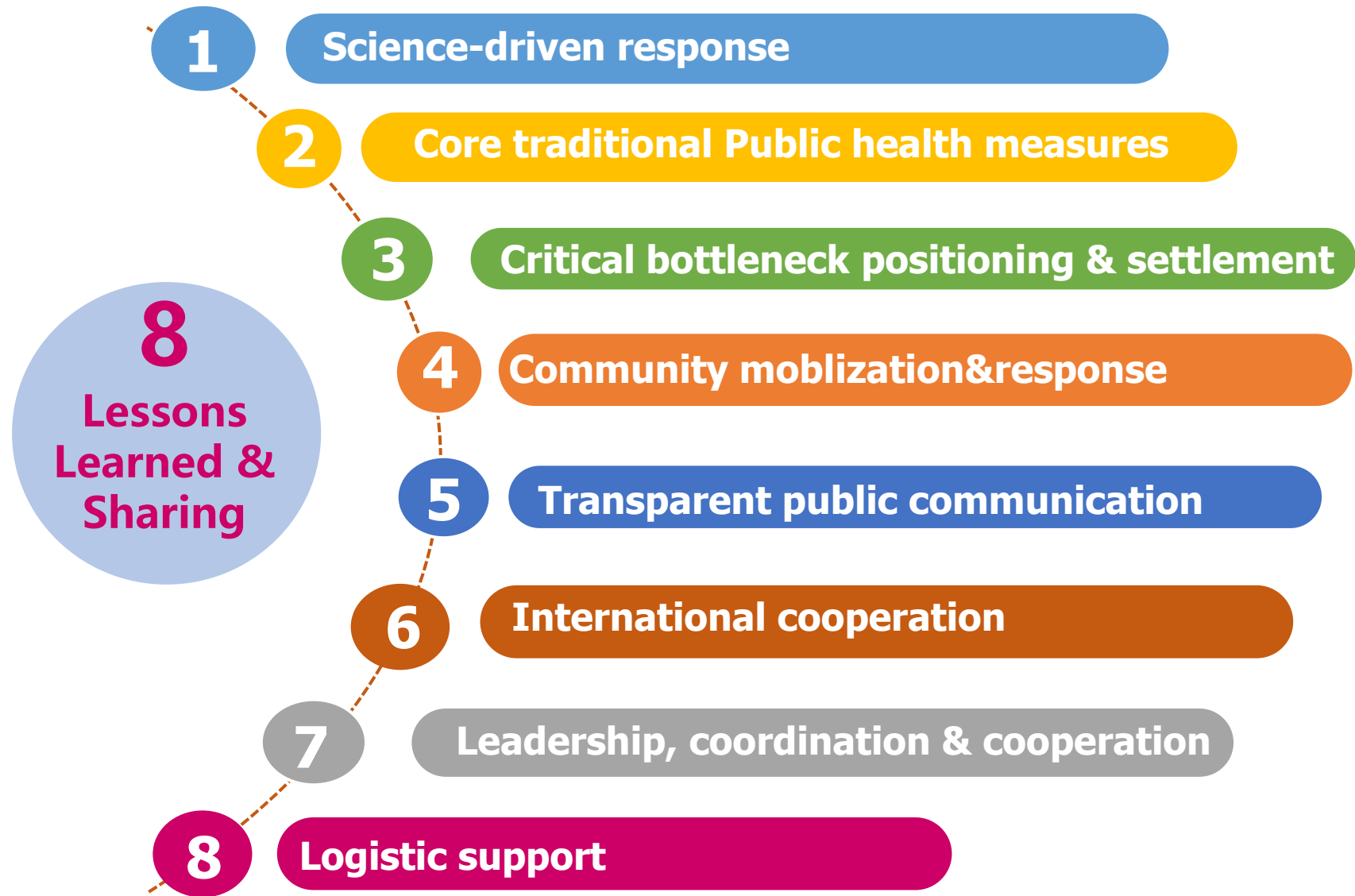
Disadvantages:

- **Privacy**
- **Not easy to meet individual demands**

Update Epidemic of COVID-19 in China (Jun 28,2020)

➤ Confirmed **83512**, Suspected **10**, PCR(+): **6707**; Death: **4,634** ; CFR: **5.5%**





Key Experiences



FOUR Defense Lines

- 1st Line-Wuhan + Hubei
- 2nd Line-Beijing
- 3rd Line-Hubei's surrounding regions
- 4th Line-nationwide

FOUR Earlyies

- Early Detection
- Early Reporting
- Early Isolation
- Early Treatment

For the People, By the People

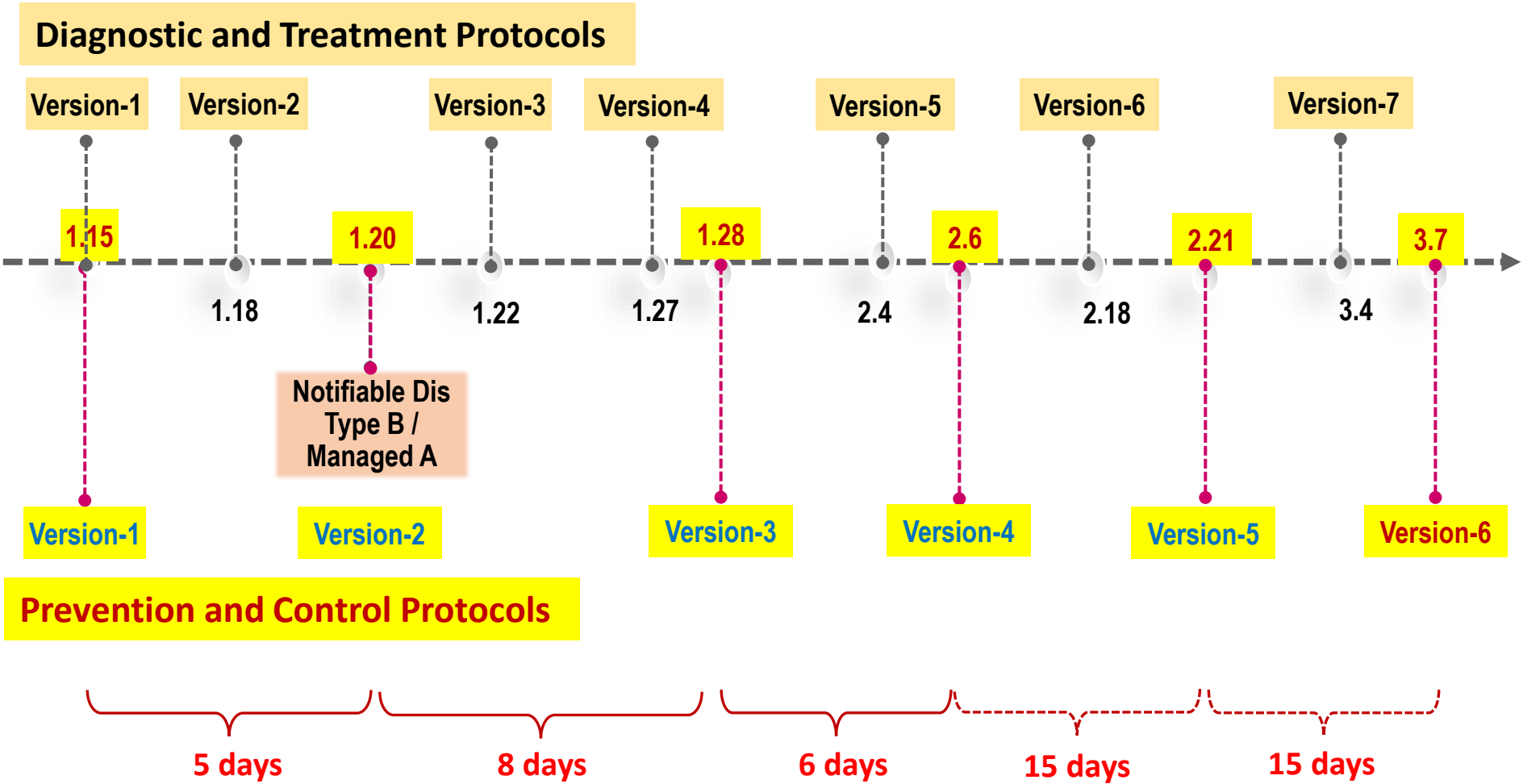
- Community engagement
- Community health education
- Communities hygiene & Disinfection

Coordination Cooperation Communication

- Resources allocation (HCW, PPE, etc)
- Logistic support
- Public understanding & Infodemic response

Development & Revisions of Technical Guidelines

Science-driven timely adjustment



Control Strategies for Imported Cases

- **No-gap Chain** from border to community to home
- **Entry Screening**
 - 14-day history and health status reporting
 - Temperature screening
 - **Categorization**: Confirmed, Suspected(e.g. with fever), Close contacts
 - Medical examination for suspected symptoms
 - Transfer
 - ✓ Confirmed/Suspected to designated hospitals
 - ✓ Close contacts to designated hotels for quarantine
- **Quarantine policy for travelers**
 - 2 weeks' quarantine in the designated hotels
 - Regardless of domestic or foreigners

Thanks