

# MEASURING DISABILITY IN INDONESIA (1<sup>st</sup> Goal)



BANGKOK, NOVEMBER 6<sup>th</sup> - 7<sup>th</sup> 2013

BY: MEITY TRISNOWATI, M SUNUSI, & NUR BUDI HANDAYANI

# Indonesia's Effort to Fulfill The Disability Right

- The government of **Indonesia** ratified UNCRPD in October 2011  
*The Law No. 4, 1997* amended into *The Law No.19,2011*
- The National Action Plan (NAP) for disabilities 2004-2013 is now being renewed where NAP **2014-2023 now under drafting. The new NAP will be complied with Incheon Strategy Goals**
- BPS in collaboration with UNFPA-WHO developing disability survey instruments and improve the methodology.  

The work involves stakeholder on disability (MoSA, MoH, MoPW, the MoEC, etc.), organizations of persons with disabilities (Blind Organisation, Physically Disable Organisation, throughout the event, etc.), and several other international institutions (WHO, UNICEF, etc.).

# The Availability Of National Baseline Data For The Incheon Strategy Indicators

- Data gaps of disability data within Incheon Strategy Indicators .

BPS-Statistic Indonesia provides data on disability through survey conducted every three years. The data is collected through Susenas module MSBP [Socio-cultural and Education]. 9 out of 62 *Incheon Strategy Indicators can be produced from the survey*

- ✓ Goal 1: the data available from susenas but BPS not yet published it
- ✓ Goal 2-7: Not Available and maybe such indicator data available in other Ministry
- ✓ Goal 8 : Available in BPS and such data have published
- ✓ Goal 9-10 : Not aplicable
- Administrative data is not support the implementation of **Incheon Strategy**, such as :
  - ✓ Proportion of cabinet positions held by persons with disabilities
  - ✓ Proportion of accessible government buildings in the national capital
  - ✓ Number of persons with disabilities who died or were seriously injured in disasters, ect

Administrative data are not available to the regular basis, due to incompleteness of reporting system. The provision disability data rely on household survey.

# Indonesia's Experience in Collecting Data For The 1st Incheon Strategy Goal

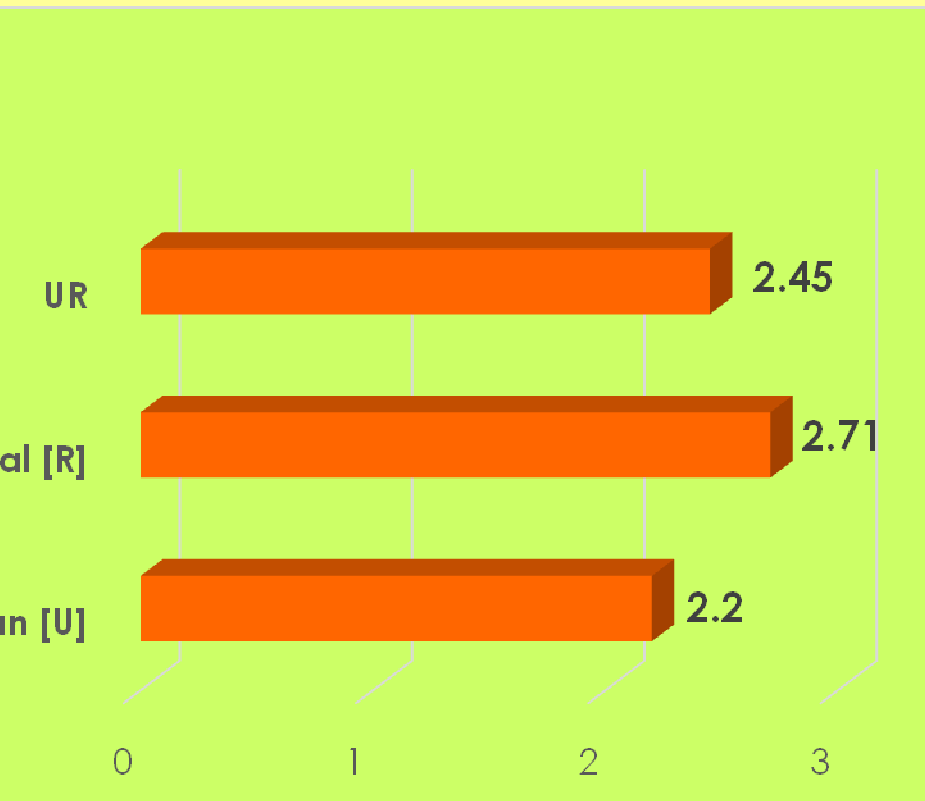
et	Indicator	Data Source	Concept Poverty	Concept Disability
	$\frac{\text{Povd}}{\text{P}} \times 100$ $\frac{\text{Povd}}{\text{Pov}} \times 100$ Povd = # of poor with disability Pov = # of poor P = population	Susenas MSBP and Consumption Module  Every three years, the most recent :2012	Consumption per capita below Poverty line (PL) PL: Cost of 2100 kcal/cap/day plus essential non food items (housing, education, transportation, ect)	any restriction or lack (resulting from an impairment) of ability to perform an activity in a manner or within the range considered normal for a human being (Susenas,2012)
		Integrated data base for Social Protection (by name by address). The variable identify the disability in poor household is collected, The # of disability who are poor can be produced Every three years, the most recent : 2011	Lowest 40% people by income included in the social protection data base	Impairment-handicap physically and mentality : blind, deaf, dumb, physically disable

# Indonesia's Experience in Collecting Data For The 1st Incheon Strategy Goal (2)

et	Indicator	Data Source	Concept of Employment	Concept Disability
	<p>Ewd ----- x100 E</p> <p>Ewd = Employment with disability E = Total Employment</p>	Population Census 2010	Minimum one hour continual earned activity during previous week	any restriction or lack (resulting from an impairment) of ability to perform an activity in a manner or within the range considered normal for a human Being <b>although using tools, Are [Name] has disability in seeing, communicating, moving, or self care?</b>

et	Indicator	Data Source	Program	Target Program
	<p>Etd ----- x100 Et</p> <p>Etd = Disability person participating in the vocational training E = Employment participating in the training for worker</p>	Administration/report provided by MoSA, MoMT	Since 2006, training Vocational and Social Rehabilitation has been implemented by MoSA	Priority is person with heavy disability who come from poor household

Target 1. Percentage of disabilities person by Urban Rural In 2012

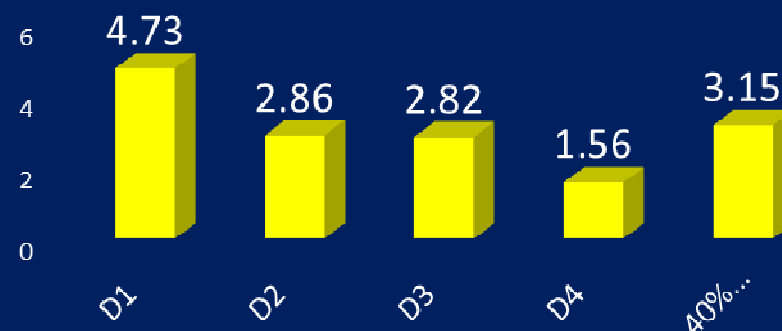


source: Susenas MSBP 2012

## Target 1.A Data Source : Survey on Social Protection 201

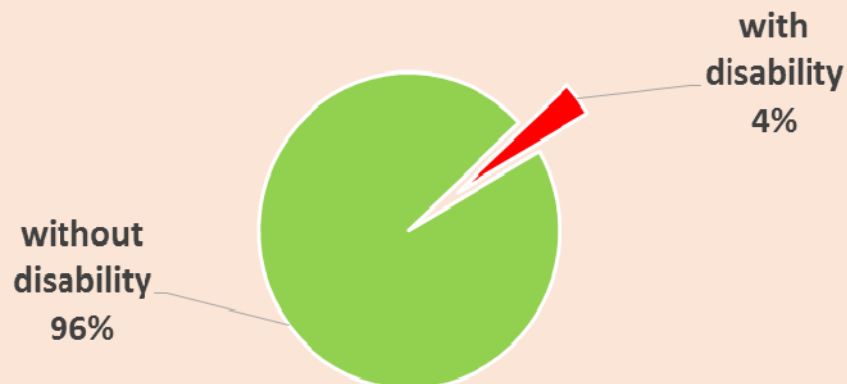
Poorer  
household,  
higher  
disability

The Percentage of disability person in the lowest 40% population by income



## Target 1.B. Data Source Population Census 2010

Proportion of persons with disability of aged 15 and older in employment to the general population in employment



41,48%  
disability  
persons is  
employment

4% from  
persons of  
working age i  
employment  
disability  
person

# Point To Resources That Might Be Helpfull

Prevalence of disability is about below 5% (PC,2010)

- ✓ Sampling frame has to be developed for improving sampling design

## ■ Responden Challenge :

- ✓ Can't explain the level of difficulties the disabled person experienced and facing
- ✓ Longer time required in the enumerator training session

## ■ Special/Specific Survey required

- ✓ Separated from regular survey
- ✓ Survey with disability is limited due to budget availability, if the survey conducted separately from the Susenas
- ✓ Other sources of data (i.e services/administration data) is also utilized
- ✓ Sampling frame is to be developed based on PC 2010
- ✓ Periodicity → 3 yearly survey

**THANK YOU**