

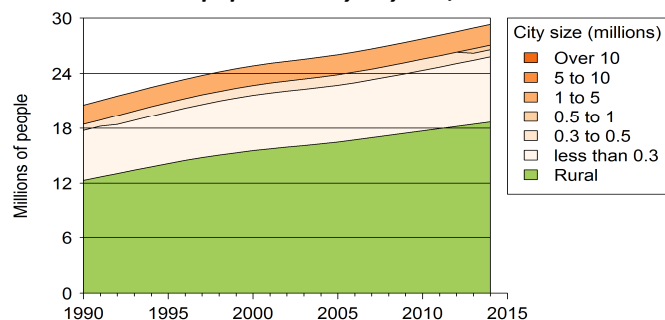


Uzbekistan

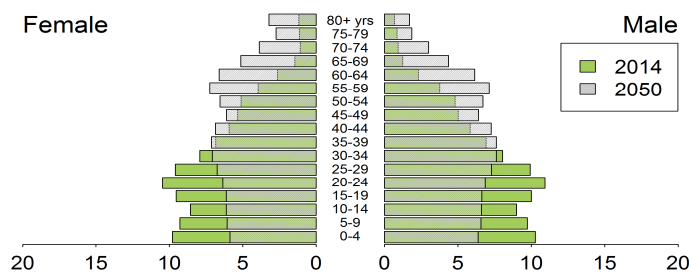
Demographic trends

Population size (millions), 1990, 2014	20.6	29.3
Average annual growth rate (%), 1990, 2014	2.4	1.4
Urban population (% of pop.), 1990, 2014	40.2	36.3
in cities over 1 million people	10.2	7.6
in cities from 0.3 to 1 million people	3.3	4.3
in cities < 0.3 million people	26.6	24.3
Population density (pop. per km ²), 1992, 2012	48.1	63.8
Foreign population (% of pop.), 1990, 2013	8.0	4.4
Net migration rate (migrants per 1 000 pop.)	-2.5	-1.4
Life expectancy at birth (in years), 1990, 2014	66.8	68.4
Total fertility rate, 1990, 2014 (Live births per woman)	4.2	2.3
Adolescent fertility rate, 1990-1995, 2010-2015 (Live births per 1 000 women aged 15-19 years)	66.1	38.8

Rural and urban population by city size, 1990-2014



Population age structure, female and male, 2014, 2050



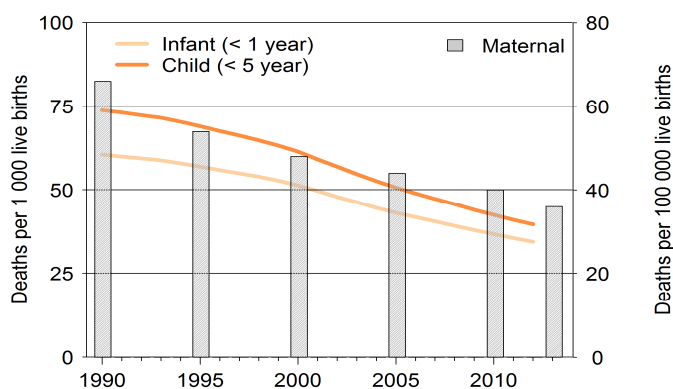
Poverty and inequalities

Population living in poverty		
below 1.25 dollars (2005 PPP) a day	-	-
below 2 dollars (2005 PPP) a day	-	-
below national poverty line, 2011 (% of population)	-	16.0
Gini index (income equality coefficient), 1998, 2003	45.3	36.7
Population with access to		
Improved water sources (% of pop.)		
Rural, 1990, 2012	85.0	81.0
Urban, 1990, 2012	97.0	98.0
Improved sanitation (% of pop.)		
Rural, 1990, 2012	76.0	100.0
Urban, 1990, 2012	95.0	100.0

Health

Mortality rate (deaths per 1 000 live births)		
Infant, 1990, 2012	60.5	34.4
Under-five, 1990, 2012	73.8	39.6
Children under-five underweight (%), 1996, 2006	13.3	4.4
Maternal mortality ratio, 1990, 2013 (deaths per 100 000 live births)	66	36
Antenatal care visit, at least one visit, 1996, 2006 (% of women with live births)	94.9	99

Infant, child and maternal mortality rates, 1990-2013



Population living with HIV		
Total adults, number, 2012	-	30000
AIDS deaths, number, 1990, 2012	100	2400
HIV prevalence rate (% pop. 15-49 yrs), 1990, 2012	0.1	0.1

Total health expenditure		
% of GDP, 1995, 2012	6.79	5.89
Current PPP dollars per capita, 1995, 2012	80.14	220.8
General government health expenditure		
% of government expenditure, 1995, 2012	9.45	9.69
Current PPP dollars per capita, 1995, 2011	42.56	97.36

Education

Net enrolment in primary, * 2011	-	88.5
Net enrolment in secondary *	-	-
Gross enrolment in tertiary, * 1999, 2011 * (% of respective school age population)	12.5	8.9
Adult literacy rate (% of pop. aged 15 yrs and above)		
Female, 2000, 2012	98.1	99.3
Male, 2000, 2012	99.2	99.7
Public expenditure on education		
% of GDP	-	-
% of total government expenditure	-	-
Public expenditure per pupil (% of GDP per capita)		
Primary	-	-
Secondary	-	-
Tertiary	-	-
Gross domestic expenditure on research/development		
% of GDP	-	-
Current PPP dollars per capita	-	-

Air pollution and climate change

Greenhouse gas emissions

Million tons of CO ₂ equivalent, 1990, 2010	167.4	173.8
% change per annum, 1990-1995, 2010	-3.0	-0.7
Tons of CO ₂ equiv. per capita, 1990, 2010	8.1	6.3
Tons of CO ₂ equiv. per \$1000 GDP, 1990, 2010	11.4	4.4

CO₂ emissions from fuel combustion

Million tons of CO ₂ equivalent, 1990, 2011	119.8	110.2
% change per annum, 1991, 2011	3.2	8.7
Tons of CO ₂ equiv. per capita, 1990, 2011	5.8	3.9
Grams of CO ₂ equiv. per \$1 GDP, 1990, 2011	2918.0	1294.0

Water

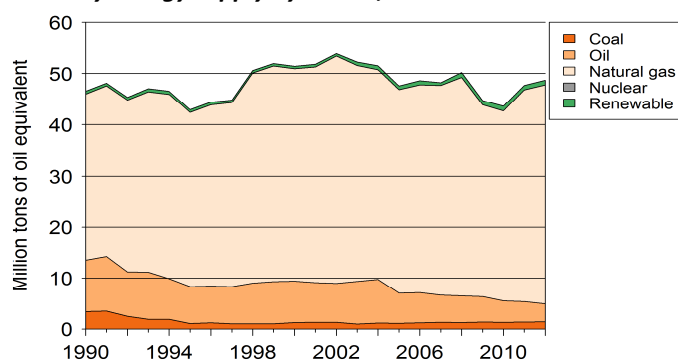
Renewable water available, 1992, 2012	2269	1712
Domestic water withdrawal, 1994, 2005	114.8	157.4
(m ³ per capita per annum)		

Energy

Total primary energy supply (TPES) (kg of oil equivalent)

Per capita, 1990, 2012	2255.8	1691.7
Per 1 000 GDP 2005 PPP dollars, 1990, 2012	1129.1	523.9
Renewable energy (% of TPES), 1990, 2011	1.2	1.9

Primary energy supply by source, 1990-2012



Biodiversity

Areas protected

Marine (% of territorial water)	-	-
Terrestrial (% of surface area), 1990, 2012	2.1	3.4
Forest (% of land area), 1992, 2012	7.2	7.7

Natural disasters

Deaths (number per annum), 1992, 2011	10.0	13.0
People affected (1 000 per annum), 1992, 2011	50.0	0.1
Economic damages (% of GDP), 1992, 2011	0.0	0.0

Connectivity

Mobile cellular subscriptions,* 1990, 2013	0.0	74.3
Internet users,* 1990, 2013	0.0	38.2
Fixed broadband internet subscribers,* 2001, 2013	0.0	1.1
* (per 100 population)		

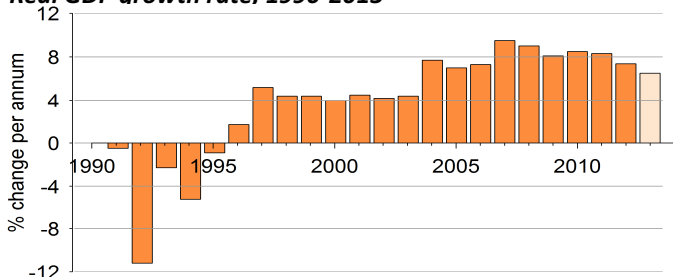
Railway density, 1997, 2011	8.6	9.9
Road density, 1990, 2000	170.4	191.8
Km of railway/road per 1 000 km ² land area		
Paved roads (% of roads), 1990, 2001	79.0	87.3
Passenger cars (per 1 000 pop.)	-	-
Road traffic deaths (per 100 000 pop.), 2010	-	11.3

Economic growth

Gross domestic product (GDP)

Constant, billion 2005 USD, 1990, 2012	11.2	25.1
Current USD per capita, 1990, 2012	715.3	1801
2005 PPP per capita, 1990, 2012	1998	3229

Real GDP growth rate, 1990-2013



Employment

Employment-to-population ratio

% Population aged 15 and above, 1991, 2012	52.8	54.4
% Female aged 15 and above, 1991, 2012	41.1	42.3
% Male aged 15 and above, 1991, 2012	65.2	66.8
Unemployment rate (% of labour force), 1991, 2012	11.2	11.3
Female, 1991, 2012	11.5	11.6
Male, 1991, 2012	11	11.1
Youth unemployment rate		
% of labour force aged 15-24, 1991, 2012	20.4	21.1

Fiscal balance

Government revenue (% of GDP), 1995, 2013	29.7	22.0
Government expenditure (% of GDP), 1995, 2013	32.6	21.7

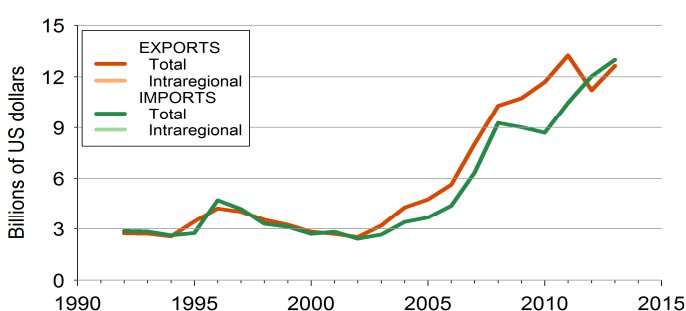
Monetary measures

Inflation rate (% per annum)	-	-
Exchange rate against USD, 1996, 2000	34.6	89.9
(% change per annum)		

International trade

Exports of merchandise (% of GDP), 1992, 2013	19.9	23.0
Imports of merchandise (% of GDP), 1992, 2013	20.8	23.6
Exports of services (% of GDP), 1994, 2013	1.1	4.4
Imports of services (% of GDP), 1994, 2013	0.1	1.4

Total and intraregional exports and imports, 1990-2013



International financing

FDI inflows (% of GDP), 1992, 2012	0.1	1.3
FDI outflows (% of GDP)	-	-
ODA received (% of GDP), 1992, 2012	0.0	0.5
Personal remittances rec'd (% of GDP)	-	-
Net external debt (% of GDP), 1992, 2012	0.4	17.2