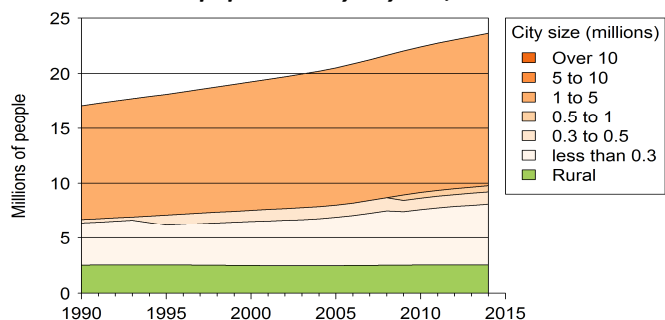




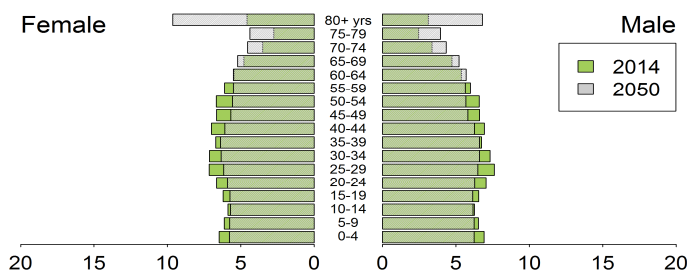
## Demographic trends

Population size (millions), 1990, 2014	17.1	23.6
Average annual growth rate (%), 1990, 2014	1.5	1.2
Urban population (% of pop.), 1990, 2014	85.4	89.3
in cities over 1 million people	61.1	58.7
in cities from 0.3 to 1 million people	1.8	7.2
in cities < 0.3 million people	22.5	23.4
Population density (pop. per km <sup>2</sup> ), 1990, 2012	2.2	3.0
Foreign population (% of pop.), 1990, 2013	22.7	27.7
Net migration rate (migrants per 1 000 pop.)	4.0	6.5
Life expectancy at birth (in years), 1990, 2014	76.8	82.6
Total fertility rate, 1990, 2014 (Live births per woman)	1.9	1.9
Adolescent fertility rate, 1990-1995, 2010-2015 (Live births per 1 000 women aged 15-19 years)	21.3	12.1

### Rural and urban population by city size, 1990-2014



### Population age structure, female and male, 2014, 2050



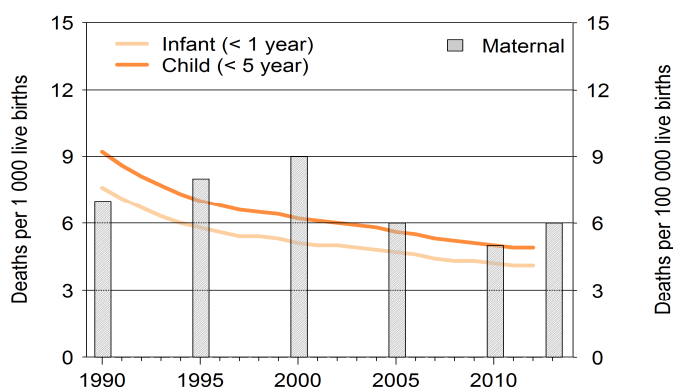
## Poverty and inequalities

Population living in poverty		
below 1.25 dollars (2005 PPP) a day	-	-
below 2 dollars (2005 PPP) a day	-	-
below national poverty line (% of population)	-	-
Gini index (income equality coefficient), 1994	35.2	-
Population with access to		
Improved water sources (% of pop.)		
Rural, 1990, 2012	100.0	100.0
Urban, 1990, 2012	100.0	100.0
Improved sanitation (% of pop.)		
Rural, 1990, 2012	100.0	100.0
Urban, 1990, 2012	100.0	100.0

## Health

Mortality rate (deaths per 1 000 live births)		
Infant, 1990, 2012	7.6	4.1
Under-five, 1990, 2012	9.2	4.9
Children under-five underweight (%)	-	-
Maternal mortality ratio, 1990, 2013 (deaths per 100 000 live births)	7	6
Antenatal care visit, at least one visit, 1991, 2008 (% of women with live births)	100	98.3

### Infant, child and maternal mortality rates, 1990-2013



Population living with HIV		
Total adults, number	-	-
AIDS deaths, number	-	-
HIV prevalence rate (% pop. 15-49 yrs)	-	-

Total health expenditure		
% of GDP, 1995, 2012	7.25	9.13
Current PPP dollars per capita, 1995, 2012	1607	4068
General government health expenditure		
% of government expenditure, 1995, 2012	13.08	17.75
Current PPP dollars per capita, 1995, 2011	1050	2529

## Education

Net enrolment in primary, * 1999, 2012	94.0	96.8
Net enrolment in secondary, * 2012	-	85.3
Gross enrolment in tertiary, * 1999, 2012 * (% of respective school age population)	65.6	86.3
Adult literacy rate (% of pop. aged 15 yrs and above)		
Female	-	-
Male	-	-
Public expenditure on education		
% of GDP, 1990, 2011	4.7	5.1
% of total government expenditure, 1990, 2011	15.2	13.5
Public expenditure per pupil (% of GDP per capita)		
Primary, 2000, 2011	16.7	20.2
Secondary, 2000, 2011	13.9	18.0
Tertiary, 2000, 2011	25.9	20.0
Gross domestic expenditure on research/development		
% of GDP, 1996, 2010	1.7	2.4
Current PPP dollars per capita, 1996, 2010	366.2	913.6

## Air pollution and climate change

### Greenhouse gas emissions

Million tons of CO <sub>2</sub> equivalent, 1990, 2010	481.9	628.9
% change per annum, 1990-1995, 2010	0.3	-5.8
Tons of CO <sub>2</sub> equiv. per capita, 1990, 2010	28.2	28.1
Tons of CO <sub>2</sub> equiv. per \$1000 GDP, 1990, 2010	1.5	0.5

### CO<sub>2</sub> emissions from fuel combustion

Million tons of CO <sub>2</sub> equivalent, 1990, 2011	260.0	396.8
% change per annum, 1990, 2011	1.8	0.2
Tons of CO <sub>2</sub> equiv. per capita, 1990, 2011	15.2	17.4
Grams of CO <sub>2</sub> equiv. per \$1 GDP, 1990, 2011	638.5	507.0

## Water

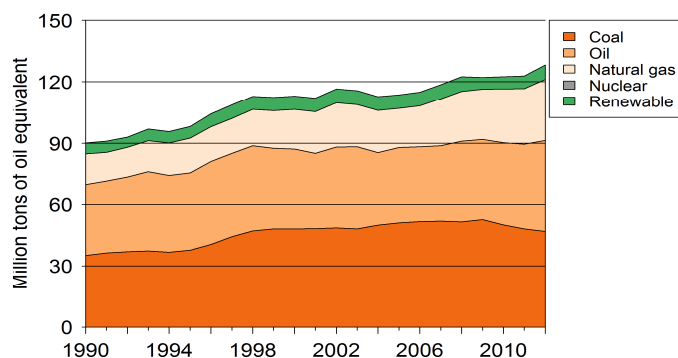
Renewable water available, 1992, 2012	28068	21344
Domestic water withdrawal, 2000, 2000	182.8	182.8
(m <sup>3</sup> per capita per annum)		

## Energy

### Total primary energy supply (TPES) (kg of oil equivalent)

Per capita, 1990, 2013	5052.1	5539.8
Per 1 000 GDP 2005 PPP dollars, 1990, 2012	212.1	158.5
Renewable energy (% of TPES), 1990, 2012	5.9	4.8

### Primary energy supply by source, 1990-2012



## Biodiversity

### Areas protected

Marine (% of territorial water), 1990, 2012	27.1	33.2
Terrestrial (% of surface area), 1990, 2012	7.1	12.9
Forest (% of land area), 1990, 2012	20.1	19.2

## Natural disasters

Deaths (number per annum), 1990, 2014	12.0	2.0
People affected (1 000 per annum), 1990, 2014	6.0	0.0
Economic damages (% of GDP), 1990, 2013	0.3	0.1

## Connectivity

Mobile cellular subscriptions,* 1990, 2013	1.1	106.8
Internet users,* 1990, 2013	0.6	83.0
Fixed broadband internet subscribers,* 2001, 2013	0.6	25.0
* (per 100 population)		

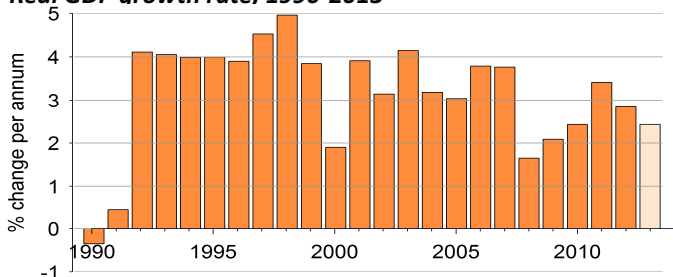
Railway density, 1990, 2011	0.9	1.1
Road density, 1990, 2010	105.5	107.5
Km of railway/road per 1 000 km <sup>2</sup> land area		
Paved roads (% of roads), 1990, 2010	35.0	43.5
Passenger cars (per 1 000 pop.), 2011	-	558.8
Road traffic deaths (per 100 000 pop.), 2010	-	6.1

## Economic growth

### Gross domestic product (GDP)

Constant, billion 2005 USD, 1990, 2012	451.1	925.2
Current USD per capita, 1990, 2012	18975	67869
2005 PPP per capita, 1990, 2012	23821	35101

### Real GDP growth rate, 1990-2013



## Employment

### Employment-to-population ratio

% Population aged 15 and above, 1991, 2012	57.2	61.9
% Female aged 15 and above, 1991, 2012	47.3	55.7
% Male aged 15 and above, 1991, 2012	67.4	68.2
Unemployment rate (% of labour force), 1991, 2012	9.6	5.2
Female, 1991, 2012	9.2	5.3
Male, 1991, 2012	9.9	5.2
Youth unemployment rate		
% of labour force aged 15-24, 1991, 2012	17.5	11.7

## Fiscal balance

Government revenue (% of GDP), 1990, 2013	23.6	23.8
Government expenditure (% of GDP), 1990, 2013	21.9	25.1

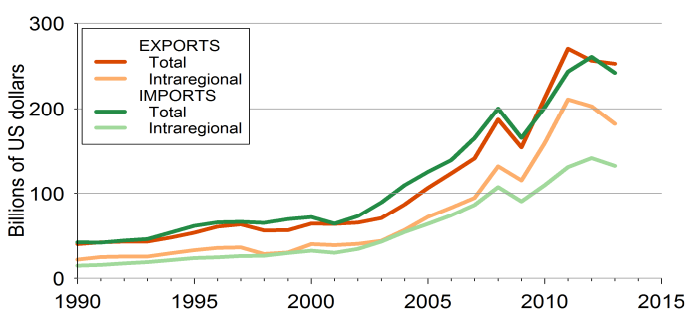
## Monetary measures

Inflation rate (% per annum), 1990, 2013	7.3	2.4
Exchange rate against USD, 1990-2000, 2013	3.5	7.3
(% change per annum)		

## International trade

Exports of merchandise (% of GDP), 1990, 2013	12.3	15.8
Imports of merchandise (% of GDP), 1990, 2013	12.9	15.1
Exports of services (% of GDP), 1990, 2013	3.0	3.3
Imports of services (% of GDP), 1990, 2013	4.1	3.9

### Total and intraregional exports and imports, 1990-2013



## International financing

FDI inflows (% of GDP), 1990, 2012	2.6	3.5
FDI outflows (% of GDP), 1990, 2012	0.2	0.4
ODA received (% of GDP)	-	-
Personal remittances rec'd (% of GDP), 1990, 2012	0.7	0.1
Net external debt (% of GDP)	-	-