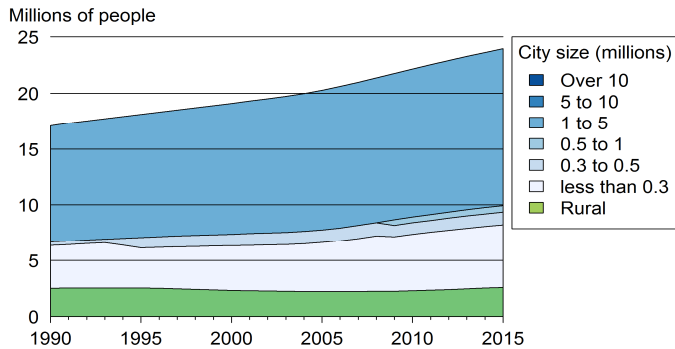


Australia

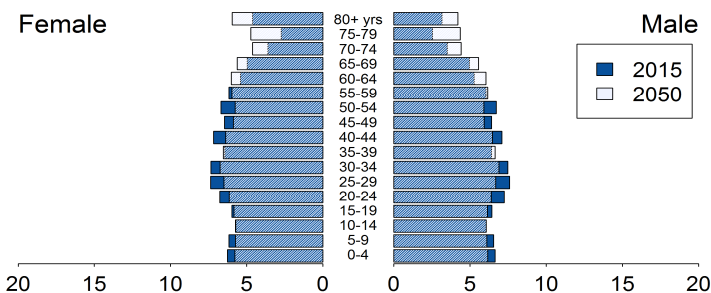
Demographic trends

Population size (millions), 1990, 2015	17.1	24.0
Average annual growth rate (%), 1990, 2015	1.4	1.4
Urban population (% of pop.), 1990, 2015	85.4	89.3
in cities over 1 million people	61.1	58.5
in cities from 0.3 to 1 million people	1.8	7.2
in cities < 0.3 million people	22.5	23.5
Population density (pop. per km ²), 1990, 2012	2.2	3.0
Foreign population (% of pop.), 1990, 2013	22.7	27.7
Net migration rate (migrants per 1 000 pop.)	4.0	8.9
Life expectancy at birth (in years)	77.6	82.1
Total fertility rate, 1990, 2015 (Live births per woman)	1.9	1.9
Adolescent fertility rate (Live births per 1 000 women aged 15-19 years)	20.9	15.5

Rural and urban population by city size, 1990 to 2015



Population age structure, 2015 and 2050



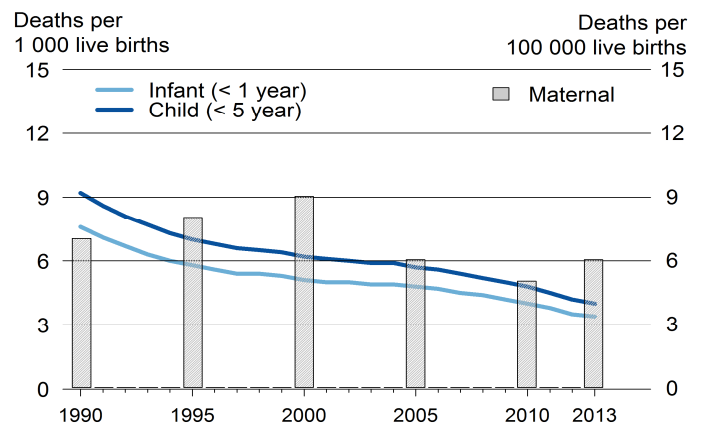
Poverty and inequalities

Population living in poverty (% of population)		
below 1.25 dollars (2005 PPP) a day	-	-
below 2 dollars (2005 PPP) a day	-	-
below national poverty line	-	-
Gini index (income equality coefficient), 1995, 2003	33.7	34.0
Population with access to		
Improved water sources (% of pop.)		
Rural, 1990, 2015	100	100
Urban, 1990, 2015	100	100
Improved sanitation (% of pop.)		
Rural, 1990, 2015	100	100
Urban, 1990, 2015	100	100

Health

Mortality rate (deaths per 1 000 live births)		
Infant, 1990, 2013	7.6	3.4
Under-five, 1990, 2013	9.2	4
Children under-five underweight (%)	-	-
Maternal mortality ratio, 1990, 2013 (deaths per 100 000 live births)	7	6
Antenatal care visit, at least one visit, 1991, 2008 (% of women with live births)	100	98.3

Infant, child and maternal mortality rates, 1990 to 2013



Population living with HIV

Total adults, number, 1990, 2013	13915	28153
AIDS deaths, number, 1990, 2013	645.0	80
HIV prevalence rate (% pop. 15-49 yrs), 1990, 2013	0.1	0.2

Total health expenditure

% of GDP, 1995, 2013	7.3	9.4
Current PPP dollars per capita, 1995, 2012	1606.7	4068.2
General government health expenditure		
% of government expenditure, 1995, 2013	13.1	18.7
Current PPP dollars per capita, 1995, 2011	1050.2	2529.2

Education

Gross enrolment (% of respective school age population)		
Primary education, 1999, 2013	100.2	105.1
Secondary education, 1999, 2013	155.7	135.8
Tertiary education, 1999, 2013	65.6	88.5
Adult literacy rate (% of pop. aged 15 yrs and above)		
Female	-	-
Male	-	-
Public expenditure on education		
% of GDP, 1990, 2012	4.7	4.9
% of total government expenditure, 1995, 2012	14.1	13.2
Public expenditure per pupil (% of GDP per capita)		
Primary, 2000, 2012	16.8	18.3
Secondary, 2000, 2012	14.0	16.5
Tertiary, 2000, 2011	26.0	20.0
Gross domestic expenditure on research/development		
% of GDP, 2000, 2011	1.6	2.2
Current PPP dollars per capita, 2000, 2011	416.1	929.6

Air pollution and climate change

Greenhouse gas emissions

Million tons CO ₂ -e _q , 1990, 2012	482.3	761.7
% change per annum, 1990, 2012	4.6	-3.1
Tons CO ₂ -e _q per capita, 1990, 2012	28.2	33.2
Tons CO ₂ -e _q /1 000 US dollars GDP, 1990, 2012	1.5	0.5

CO₂ emissions from fuel combustion

Million tons CO ₂ -e _q , 1990, 2013	259.6	388.7
% change per annum, 1990, 2012	2.0	-0.5
Tons CO ₂ -e _q per capita, 1990, 2013	15.2	16.7
Grams CO ₂ -e _q /US dollar GDP, 1990, 2013	570.7	408.2

Water

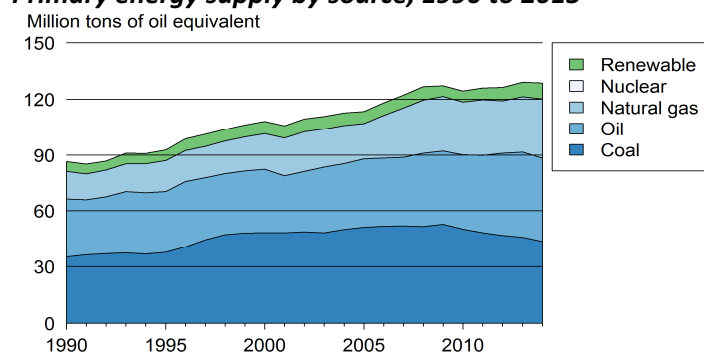
Renewable water available *, 1992, 2014	28 053	20 828
Domestic water withdrawal *, 2013	-	183.0
* (m ³ per capita per annum)		

Energy

Total primary energy supply (TPES) (kg of oil equivalent)

Per capita, 1990, 2014	5052.1	5448.0
Per 1 000 GDP 2005 US dollars, 1990, 2013	189.9	135.6
Renewable energy (% of TPES), 1990, 2013	5.9	6.1

Primary energy supply by source, 1990 to 2013



Biodiversity

Areas protected

Marine (% of territorial water), 1990, 2014	26.6	48.5
Terrestrial (% of surface area), 1990, 2014	7.6	14.6
Forest (% of land area), 1990, 2012	20.1	19.2

Natural disasters

Deaths (number per annum), 1990, 2015	12	0
People affected (1 000 per annum), 1990, 2015	6	5
Economic damages (% of GDP), 1990, 2014	0.3	0.1

Connectivity

Mobile cellular subscriptions,* 2000, 2014	44.8	131.3
Internet users,* 2000, 2014	46.8	84.6
Fixed broadband internet subscribers,* 2014	-	25.8
* (per 100 population)		

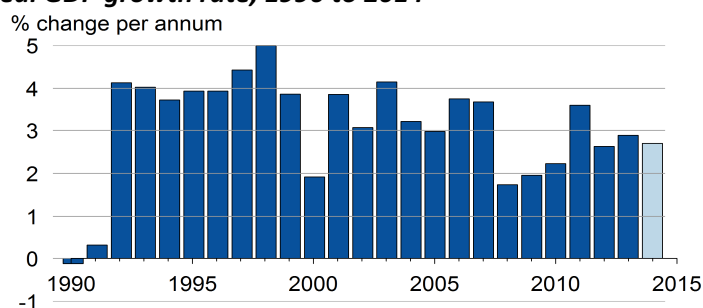
Railway density, 1990, 2012	0.9	0.2
Road density, 1990, 2011	105.5	107.2
Km of railway/road per 1 000 km ² land area		
Paved roads (% of roads), 1990, 2011	35.0	43.3
Passenger cars (per 1 000 pop.), 2011	-	558.8
Road traffic deaths (per 100 000 pop.), 2013	-	5.4

Economic growth

Gross domestic product (GDP)

Constant, billion 2005 US dollars, 1990, 2014	453.9	975.0
Current US dollars per capita, 1990, 2013	18 940	65 804
2011 PPP per capita, 1990, 2013	28 551	42 574

Real GDP growth rate, 1990 to 2014 ^{1/}



^{1/} 2014: World Bank estimates

Employment

Employment-to-population ratio

% Population aged 15 and above, 1991, 2013	57.2	61.5
% Female aged 15 and above, 1991, 2013	47.2	55.8
% Male aged 15 and above, 1991, 2013	67.4	67.4
Unemployment rate (% of labour force), 1991, 2013	9.6	5.7
Female, 1991, 2013	9.2	5.6
Male, 1991, 2013	9.9	5.7
Youth unemployment rate		
% of labour force aged 15-24, 1991, 2013	17.5	12.2

Fiscal balance

Government revenue (% of GDP), 1990, 2013	23.6	23.8
Government expenditure (% of GDP), 1990, 2013	21.9	25.1

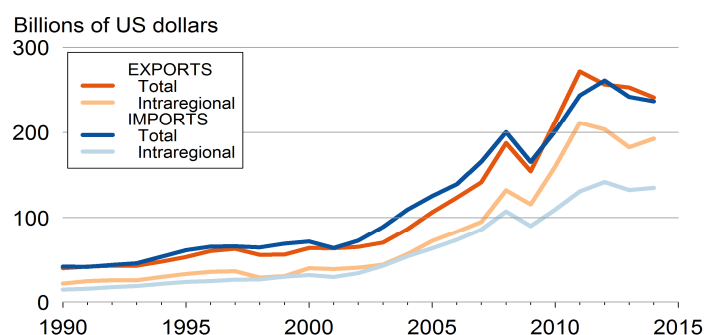
Monetary measures

Inflation rate (% per annum), 1990, 2014	7.3	2.5
Exchange rate against US dollar, 1990, 2014	1.3	7.1
(% change per annum)		

International trade

Exports of merchandise (% of GDP), 1990, 2014	12.3	15.3
Imports of merchandise (% of GDP), 1990, 2014	13.0	15.1
Exports of services (% of GDP), 2014	-	3.4
Imports of services (% of GDP), 2014	-	4.0

Total and intraregional exports and imports, 1990 to 2013



International financing

FDI inflows (% of GDP), 1990, 2014	2.4	3.3
FDI outflows (% of GDP), 1990, 2014	0.1	0.0
ODA received (% of GDP)	-	-
Personal remittances rec'd (% of GDP), 1990, 2014	0.7	0.1
Net external debt (% of GDP)	-	-