

7APPC STAKEHOLDERS CONSULTATION

21 JUNE 2023



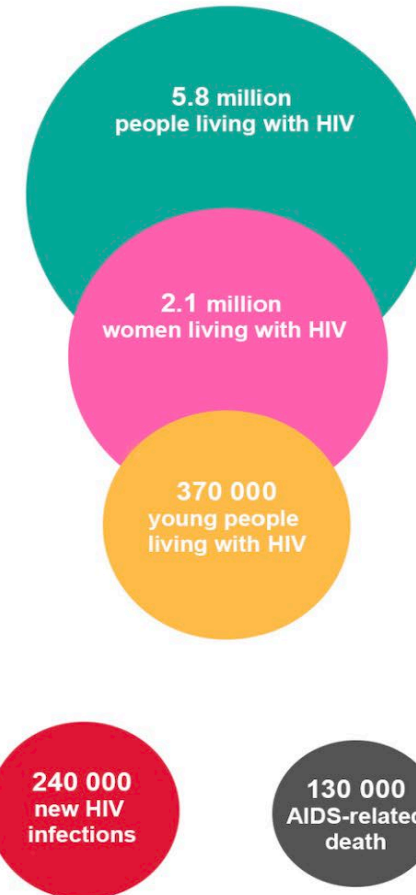
Concerns of women living with HIV and other excluded group

Stigma and discrimination aren't just buzz words for Elena Felix.

When she first learned that she was living with HIV in 1994 an employer in Dubai told her she was “unfit to work”. In 2006 a hospital in her native Philippines refused to perform a surgery because of her HIV status. At another hospital a nurse shouted across the ward “she has AIDS”. Her children were bullied at school. And once, during an interview, a reporter demanded to know how many men she'd slept with.



Overview of the epidemic





**End Stigma Against
Women Living with HIV**

**End Violence Against
Women Living with HIV**



CONCERNS OF WOMEN LIVING WITH HIV AND OTHER EXCLUDED GROUP

- Existing Laws that criminalize women just because of HIV status and not having specific law to protect from violence, WLHIV are triply vulnerable by the laws family and society.

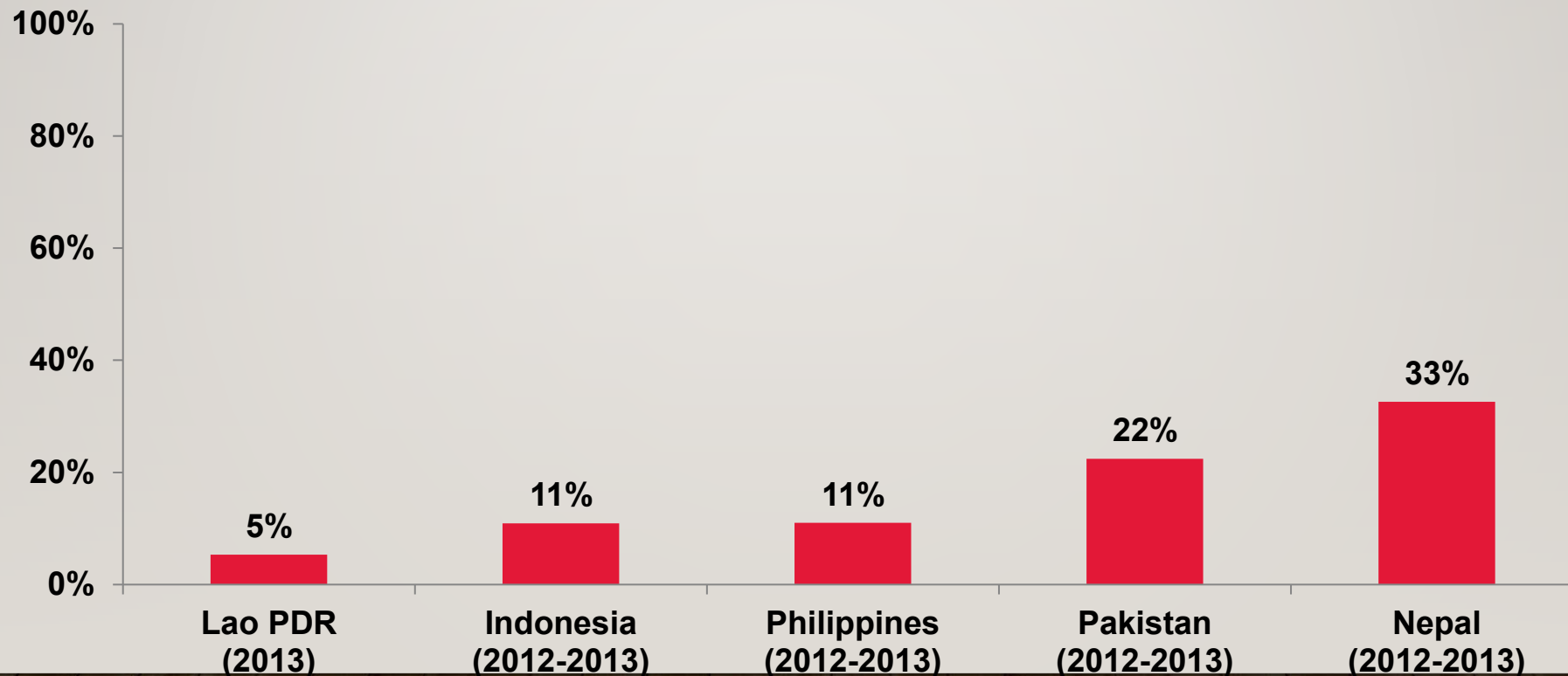
“Women are blamed for transmitting HIV because they are usually first in the family to be diagnosed. That is the starting point for them to experience human rights violations like intimate partner violence in the home and gender-based violence in the wider society.”

- Continue to face social and cultural barriers and inequalities in healthcare setting mostly violate her rights including taking decision about pregnancy or right to give Birth (Existing FCS)


**** More than eighty percent of the respondents lacked access to sexual and reproductive health and rights, including contraception, during COVID-19


- Lack of decision making power on her own body that directly impacts on women's sexual reproductive health and rights as well as controls her choice to access to treatment or birth control.

PROPORTION OF WOMEN LIVING WITH HIV WHO HAD A DESIRE TO HAVE CHILDREN REPORTED BEING COERCED TO UNDERGO STERILIZATION, 2012-2013

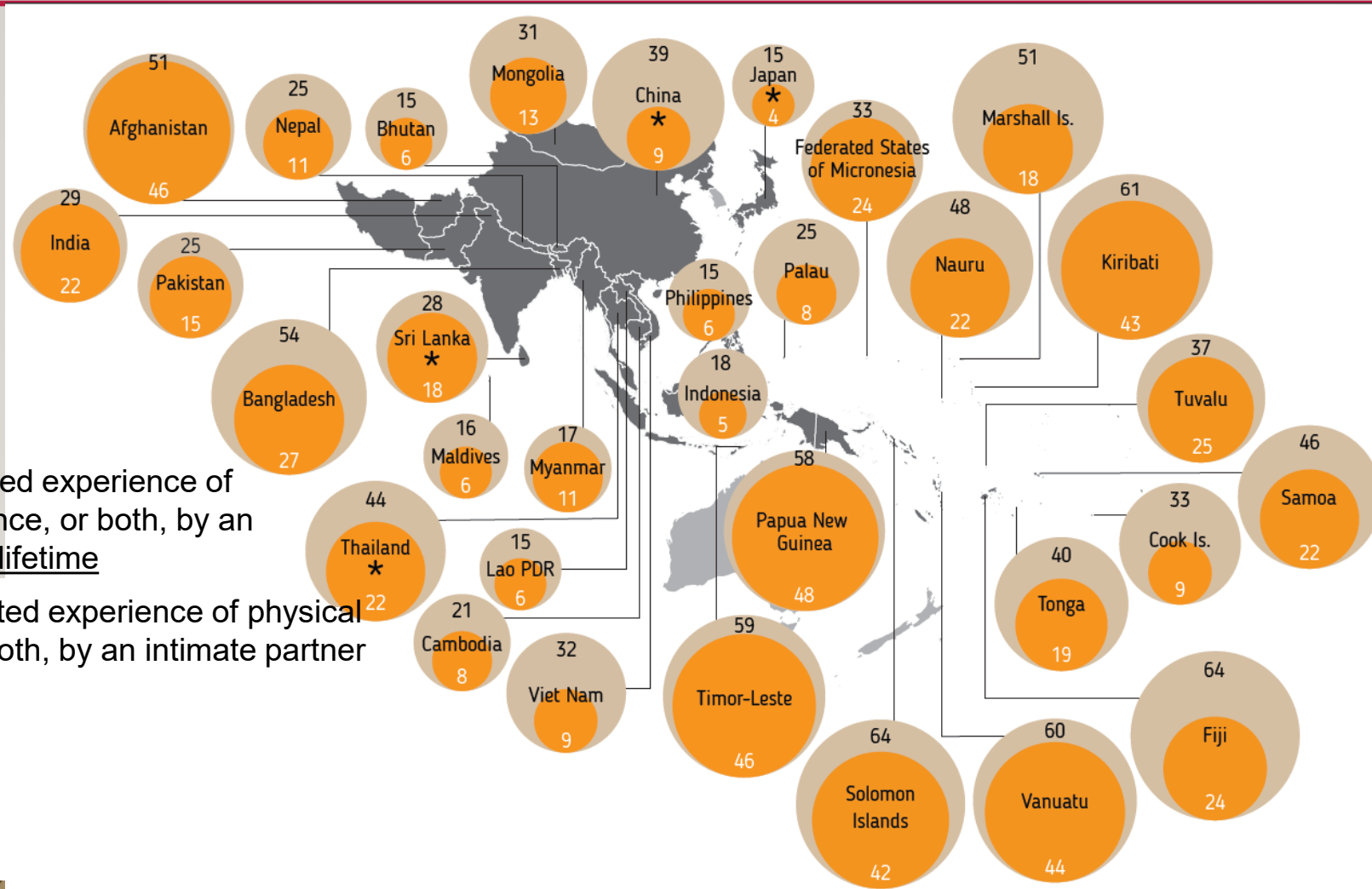


WOMEN WHO EXPERIENCED INTIMATE PARTNER VIOLENCE IN ASIA AND THE PACIFIC, 2000-2019

 % of women who reported experience of physical or sexual violence, or both, by an intimate partner in their lifetime

 % of women who reported experience of physical or sexual violence, or both, by an intimate partner in the last 12 months.

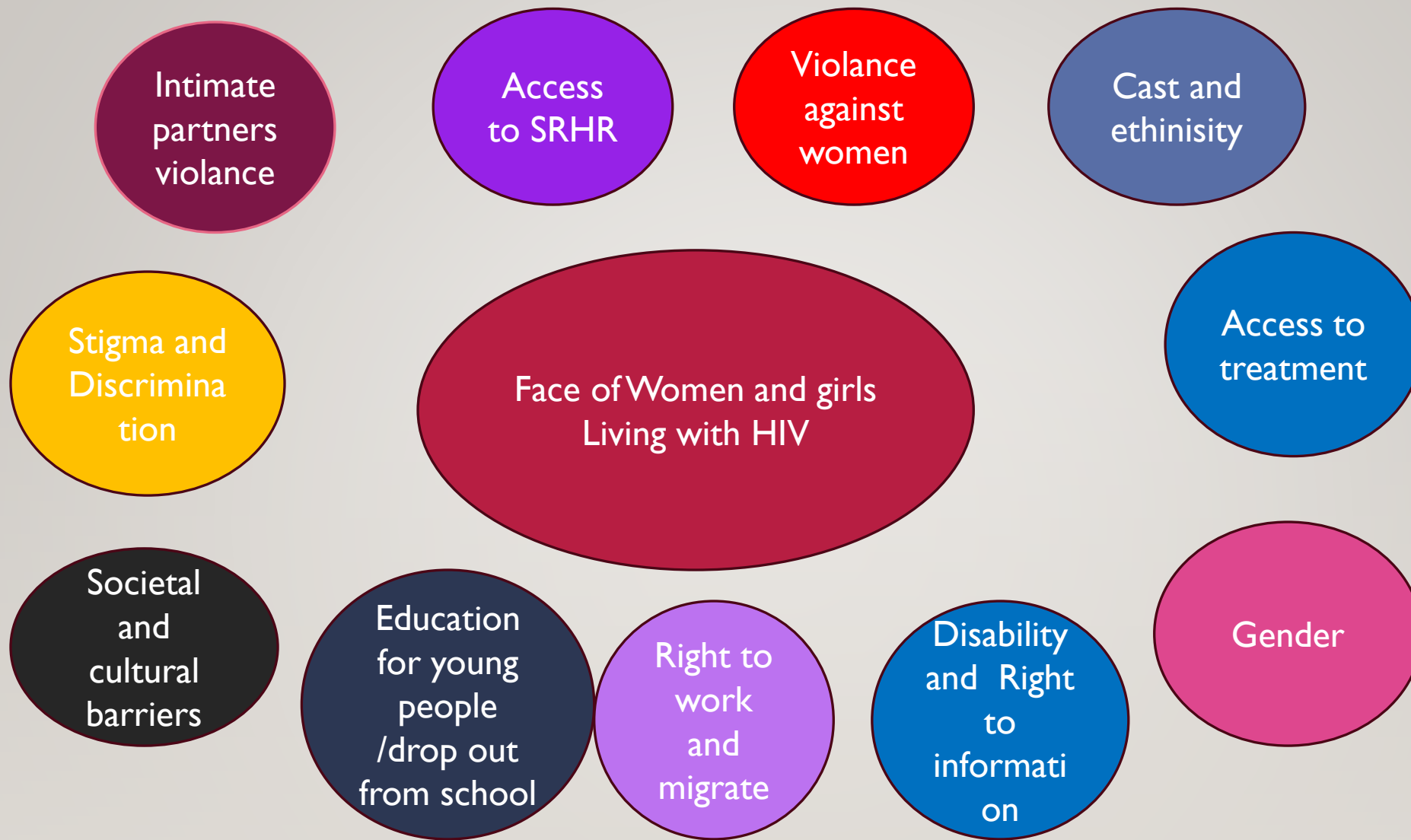
 Subnational data



Source: Violence Against Women - Regional Snapshot: kNOwVAWdata. (July 2020).

HIV IS NOT ONLY HEALTH
CONCERNs but MORE THAN
PILLS





THANK YOU FOR Hearing US