



Federal Institute for
Population Research

The future of work in the context of population ageing in Asia and the Pacific

Elke Loichinger

**Regional Expert Forum on Harnessing Intergenerational Benefits of
Demographic Change in Asia and the Pacific: Engaging all Groups from
Youth to Older Persons**

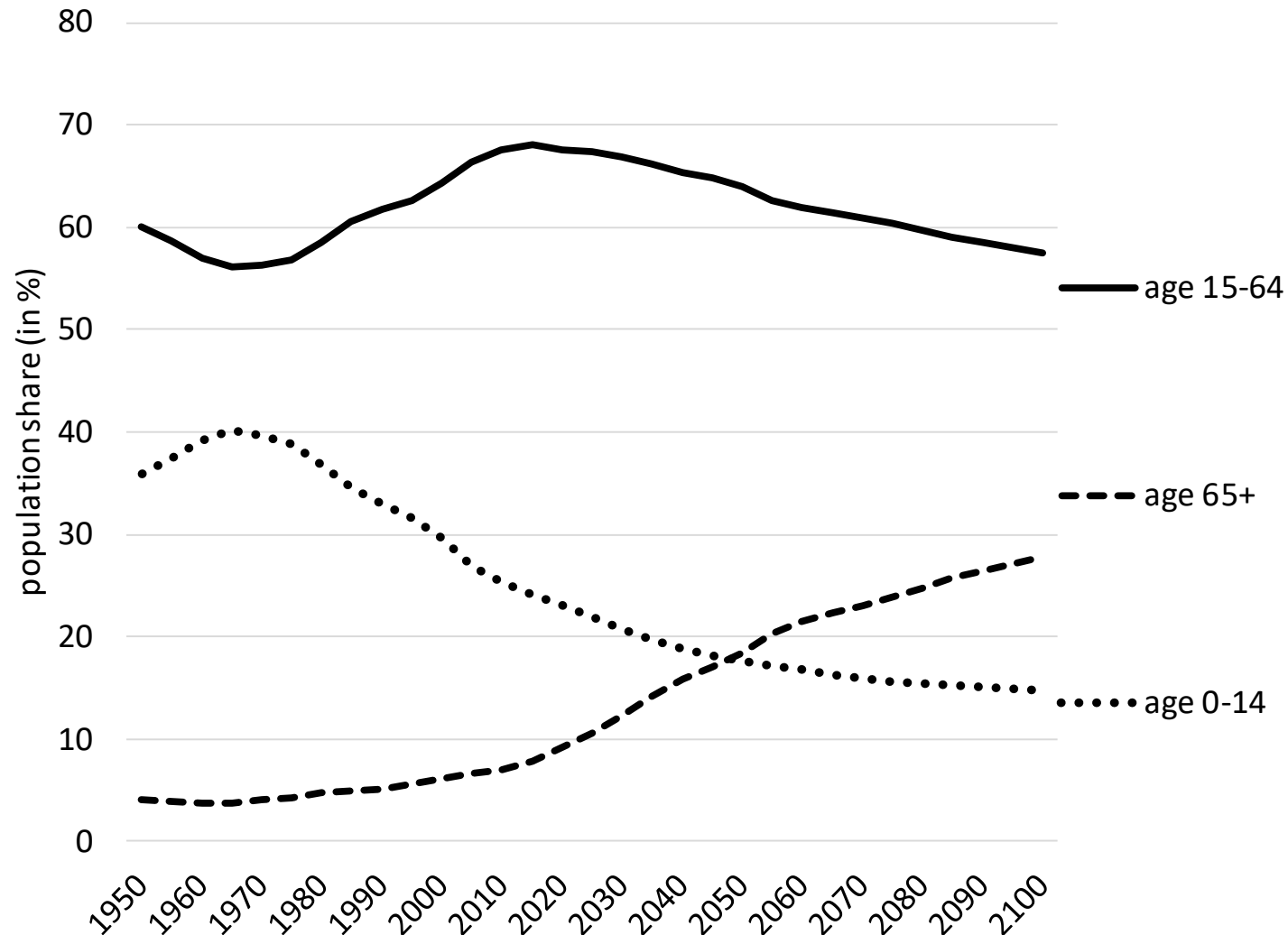
Session 3a: Older Persons and the Future of Work

June 22, 2022

Content

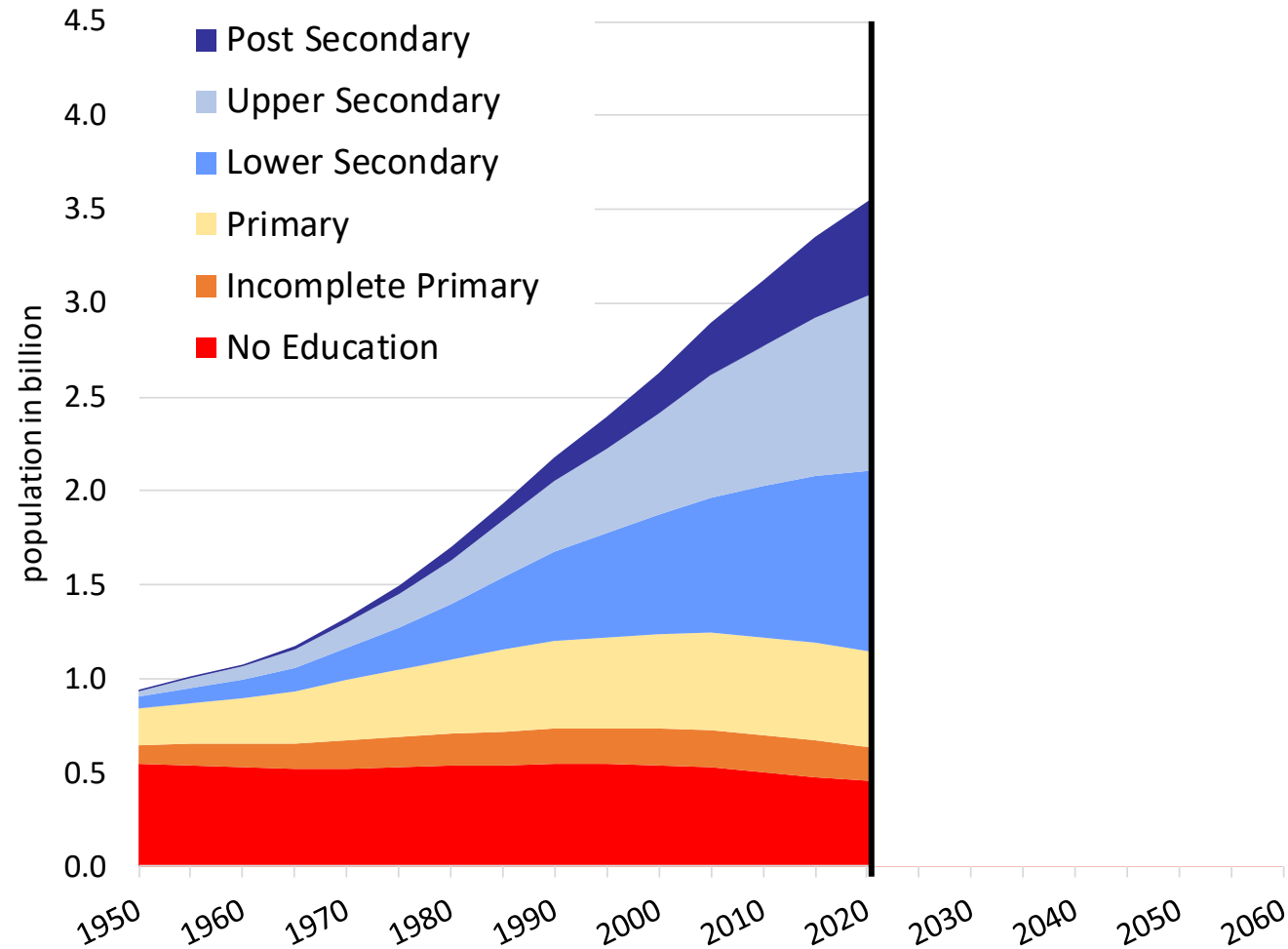
- 1) Demographic trends in the region
- 2) Characteristics of labour supply and demand
- 3) Emerging trends and developments
- 4) Recommendations

Demographic trends in Asia and the Pacific



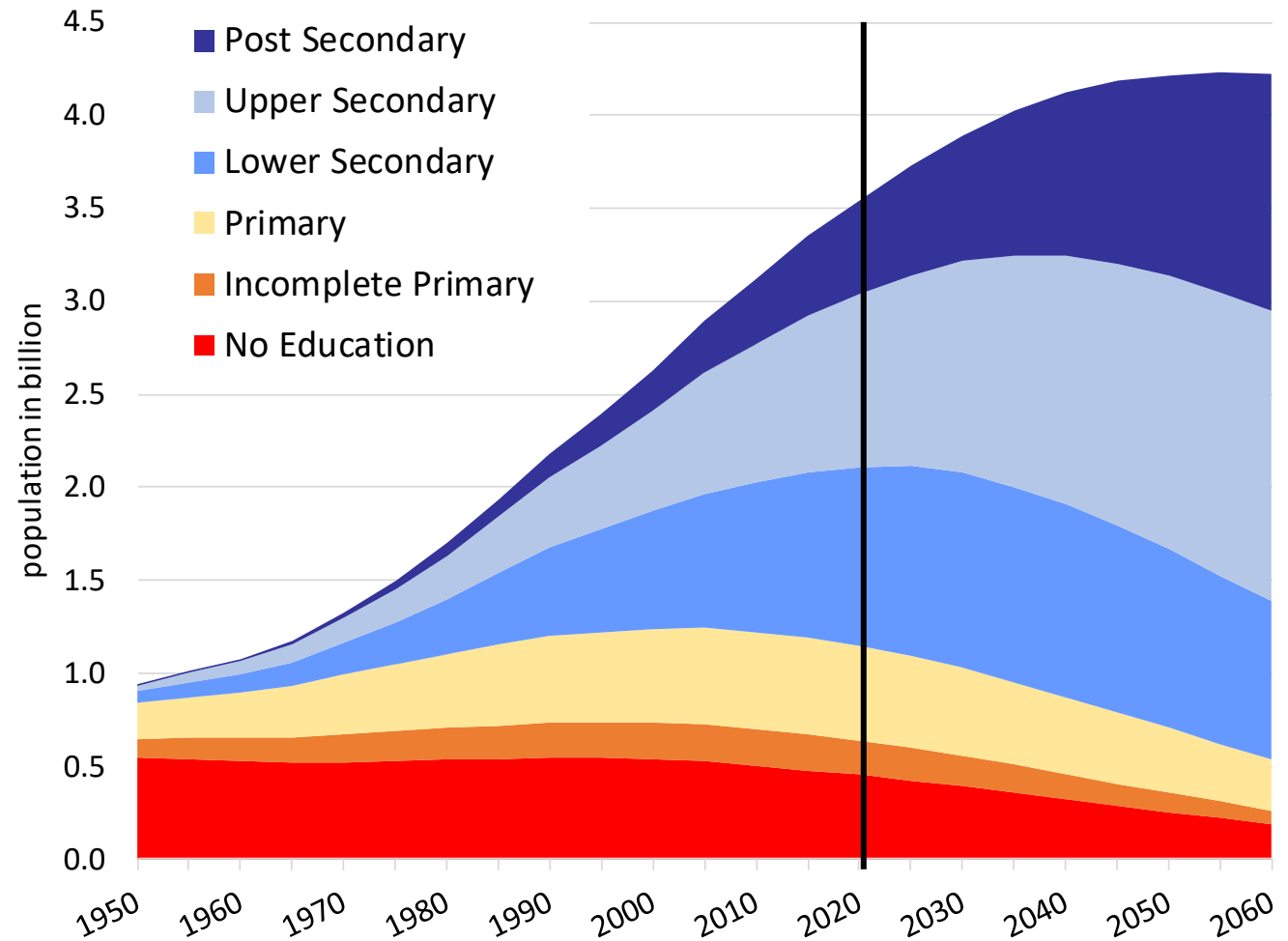
- Large differences between countries (fertility levels, life expectancy, international migration)
- Changes in age-structure
- Population ageing

Beyond age-structure: educational attainment



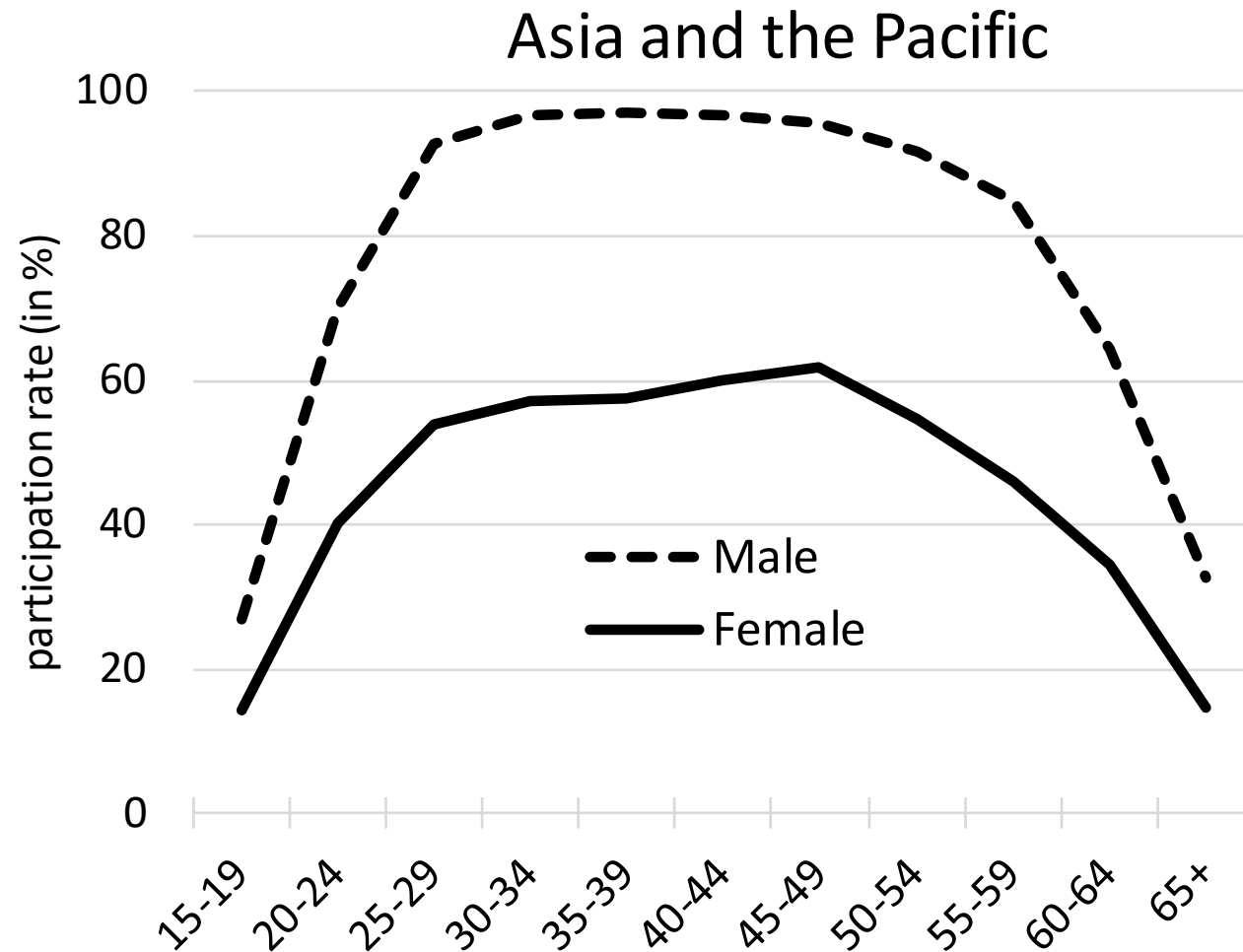
Population aged 15 years and older. Source: Wittgenstein Centre for Demography and Global Human Capital 2018, GET (Global education attainment) scenario). Asia-Pacific region countries, due to data availability without American Samoa, Cook Islands, Marshall Islands, Nauru, Niue, Northern Mariana Islands, Palau and Tuvalu; author's calculations.

Beyond age-structure: educational attainment



Shift in in educational attainment towards upper secondary and post-secondary education

Characteristics of labour supply and demand



- Informal and formal employment
- Role of social protection
- Changes in skill demands
- Continuing education and training
- Labour migration

Emerging trends and developments: How do they impact the future of work?

COVID-19

**Fourth
Industrial
Revolution**

**Green
economy**

**Climate
change and
natural
disasters**

The way forward: Recommendations

- 1) Strengthen social protection in preparation for population ageing and future crises
- 2) Promote life-long education and training
- 3) Take a life-course approach
- 4) Remove barriers to work
- 5) Promote inclusion of relevant stake holders and cross-sectoral policymaking
- 6) Enhance the provision of disaggregated data for evidence-based policy making



Federal Institute for
Population Research

Thank you!

Elke Loichinger

Federal Institute for Population Research (BiB)

elke.loichinger@bib.bund.de