



*Building global identity
Protecting digital trust*



Organizational Identity - Securely identify and verify organizations, people and roles with the LEI and vLEI

Trustless Cross-border Data Validation: The Role of
Verifiable Credentials and APIs

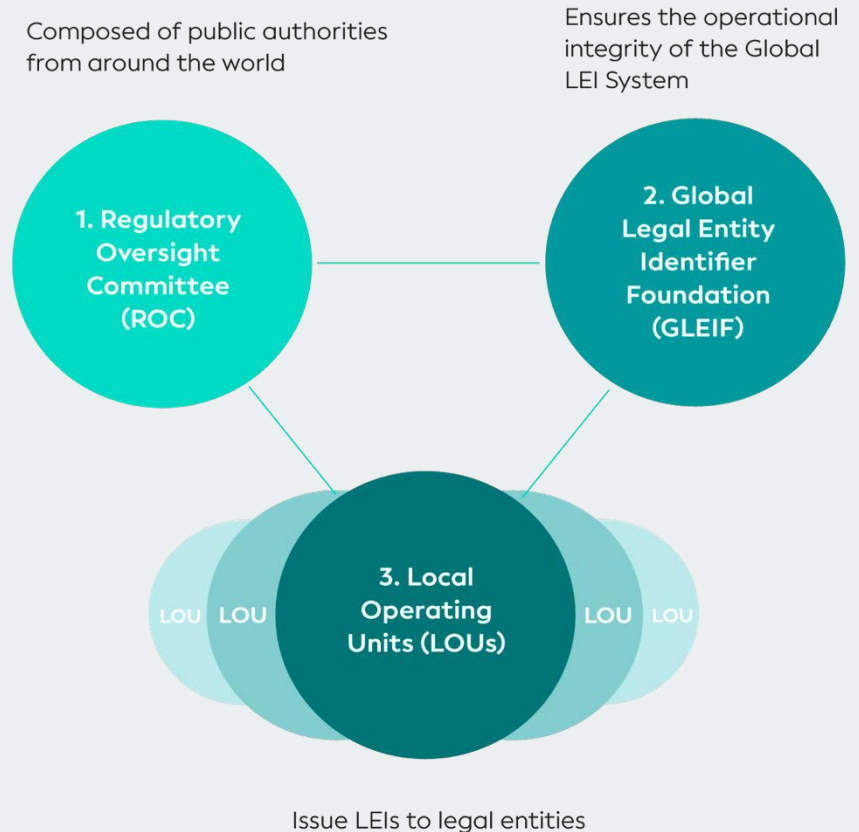
2025-01-16

Author: GLEIF

What is the Global Legal Entity Identifier Foundation (GLEIF)?

- GLEIF is a not-for-profit Swiss foundation, founded by the Financial Stability Board (FSB).
- GLEIF is overseen by the Regulatory Oversight Committee (LEI ROC) with
 - **71 regulators** and
 - **19 observers**
 - from **50 countries**
- GLEIF Board has **18 independent directors**
- **38 accredited Partners** for LEI issuing (**LOUs**) and growing
- **> 2,8 million issued LEIs** as of today, available as open data without IP or copyright protection.

The Financial Stability Board (FSB) and the Group of Twenty (G20) have endorsed the LEI, Global LEI System and GLEIF.



The Legal Entity Identifier (ISO 17442-1)

A life-long identifier owned by the respective legal entity

National
Registration
Identification
Information*

NESTLÉ S.A.
 Policy Conforming ⓘ
 as of 2024-09-11T00:00:00Z

Current Data | Events and Changes | Show XML | vLEIs

LEI Code KY37LUS27QX7BB93L28 ⓘ Hide

(Primary) Legal Name	NESTLÉ S.A.
Registered At	Commercial Register (Ministry of Justice) Handelsregister (Eidg. Amt für das Handelsregister; Bundesamt für Justiz) Switzerland RA000549
Registered As	CHE-105.909.036
Jurisdiction Of Formation	CH
General Category	GENERAL
Entity Legal Form	Company limited by shares (en) Société anonyme (fr) Aktiengesellschaft (de) Società anonima (it) MVII
Entity Status	ACTIVE
Entity created at	2000-06-25T05:00:00Z
BIC Code	NESNCH22XXX
ISIN Code	CH1300277840 US6410693070 CH1194355124 CH1194355108 CH0419042509 Show all (24)
S&P Global Company ID	31973

Children ⓘ

Direct children (53) Published Relationship

NESTLÉ S.A.

- WYETH PHILIPPINES INC. (Direct)
- SMA NUTRITION INDIA PRIVATE LIMITED (Direct)
- PT NESTLE INDONESIA (Direct)
- Nestle Australia Ltd (Direct)
- MAGGI-UNTERNEHMUNGEN AG (Direct)
- NESTLE MARCAS PERU S.A.C. (Direct)
- Galderma Nordic AB (Direct)
- 네슬레코리아 유한책임회사 (Direct)
- NESTLE WATERS BRASIL - BEBIDAS E ALIMENTOS LTDA. (Direct)
- NESTLE BRASIL LTDA. (Direct)
- Nestle de Colombia S.A. (Direct)
- NESTLE PERU S.A. (Direct)
- NESTLE TÜRKIYE GIDA SANAYI ANONİM ŞİRKETİ (Direct)
- NESTLE DUBAI MANUFACTURING L.L.C. (Direct)
- NESTLE MIDDLE EAST FZE (Direct)
- NESTLE MIDDLE EAST MANUFACTURING LLC (Direct)
- Nestle Lanka PLC (Direct)
- บริษัท เนสท์เล่ (ไทย) จำกัด (Direct)
- บริษัท เนสท์เล่ (ไทย) จำกัด (Direct)
- NESTLE CHILE SA (Direct)
- SOCIÉTÉ DES PRODUITS NESTLÉ S.A. (Direct)
- CPW MEXICO S DE RL DE CV (Direct)
- NESTLE SERVICIOS CORPORATIVOS SA DE CV (Direct)
- MARCAS NESTLE SA DE CV (Direct)
- บริษัท เนสท์เล่ (ประเทศไทย) จำกัด (Direct)

Ultimate children (90) Published Relationship Lapsed Relationship

- ネスレ日本株式会社 (Ultimate)
- NESTLÉ OPERATIONAL SERVICES WORLDWIDE SA (Ultimate)
- NIFS SA (Ultimate)
- WYETH PHILIPPINES INC. (Ultimate)
- NESTLE CAPITAL CANADA LIMITED (Ultimate)
- SMA NUTRITION INDIA PRIVATE LIMITED (Ultimate)
- NESTLÉ PURINA MANUFACTURING OPERATIONS POLAND SPÓŁKA Z OGRANICZONĄ ODPOWIEDZIALNOŚCIĄ (Ultimate)
- PT NESTLE INDONESIA (Ultimate)
- Nestle Australia Ltd (Ultimate)
- MAGGI-UNTERNEHMUNGEN AG (Ultimate)
- ERIKLI SU VE MESRUBAT SANAYI VE TICARET ANONIM SIRKETI (Ultimate)
- NESTLE MARCAS PERU S.A.C. (Ultimate)
- Galderma Nordic AB (Ultimate)
- 네슬레코리아 유한책임회사 (Ultimate)
- NESTLE WATERS BRASIL - BEBIDAS E ALIMENTOS LTDA. (Ultimate)
- CHOCOLATES GAROTO LTDA. (Ultimate)
- NESTLE BRASIL LTDA. (Ultimate)
- NESTLE NORDESTE ALIMENTOS E BEBIDAS LTDA. (Ultimate)
- CPW BRASIL LTDA (Ultimate)
- Nestle de Colombia S.A. (Ultimate)
- NESTLE PERU S.A. (Ultimate)
- NESTLE DUBAI MANUFACTURING L.L.C. (Ultimate)
- NESTLE MIDDLE EAST FZE (Ultimate)

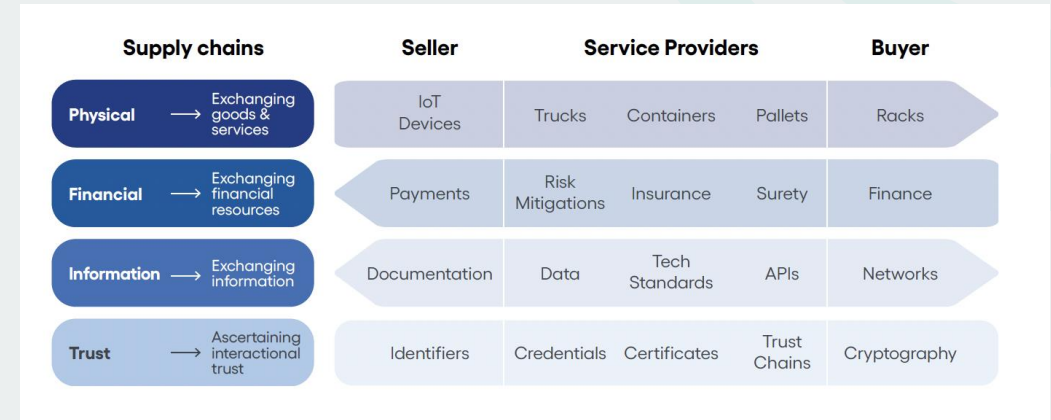
* GLEIF maintains a [list of registration authorities globally](#).



The need for Organizational Identity

Secure, certain, verifiable

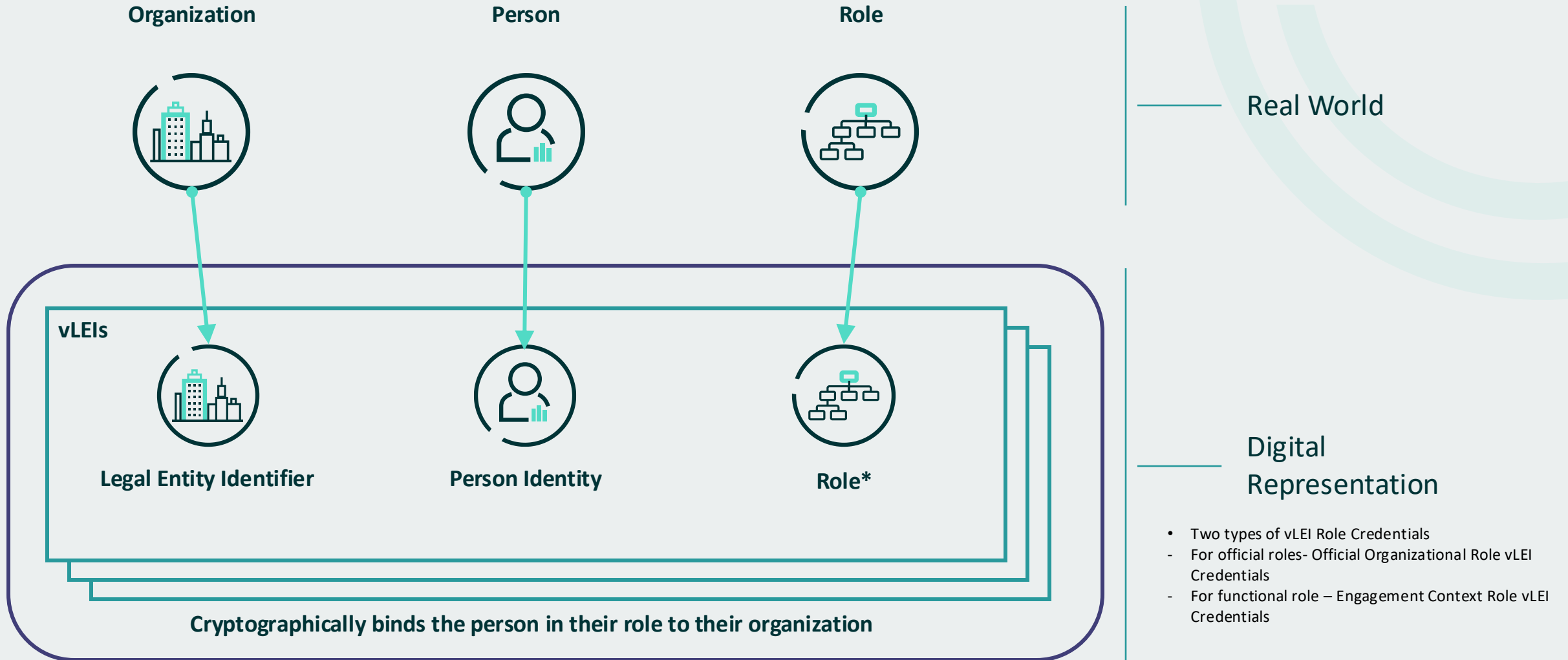
- When exchanging information across different jurisdictions, networks, platforms or systems,
 - it is necessary to know with certainty the entity or the role of the individual with whom you are dealing;
 - it is also necessary for the exchanged data or documents to remain trustworthy.
- The LEI supports precise **identification** of legal entities globally.
- The vLEI (ISO17442-3) - a marrying of the LEI with Verifiable Credentials - supports Organizational Digital Identity.
- A recipient of a vLEI credential can authenticate the organization as well as the people that represent the organization.



Supply chain layers, subjects and objects (examples)

Source: ICC DSI, Principles for Digital Trust

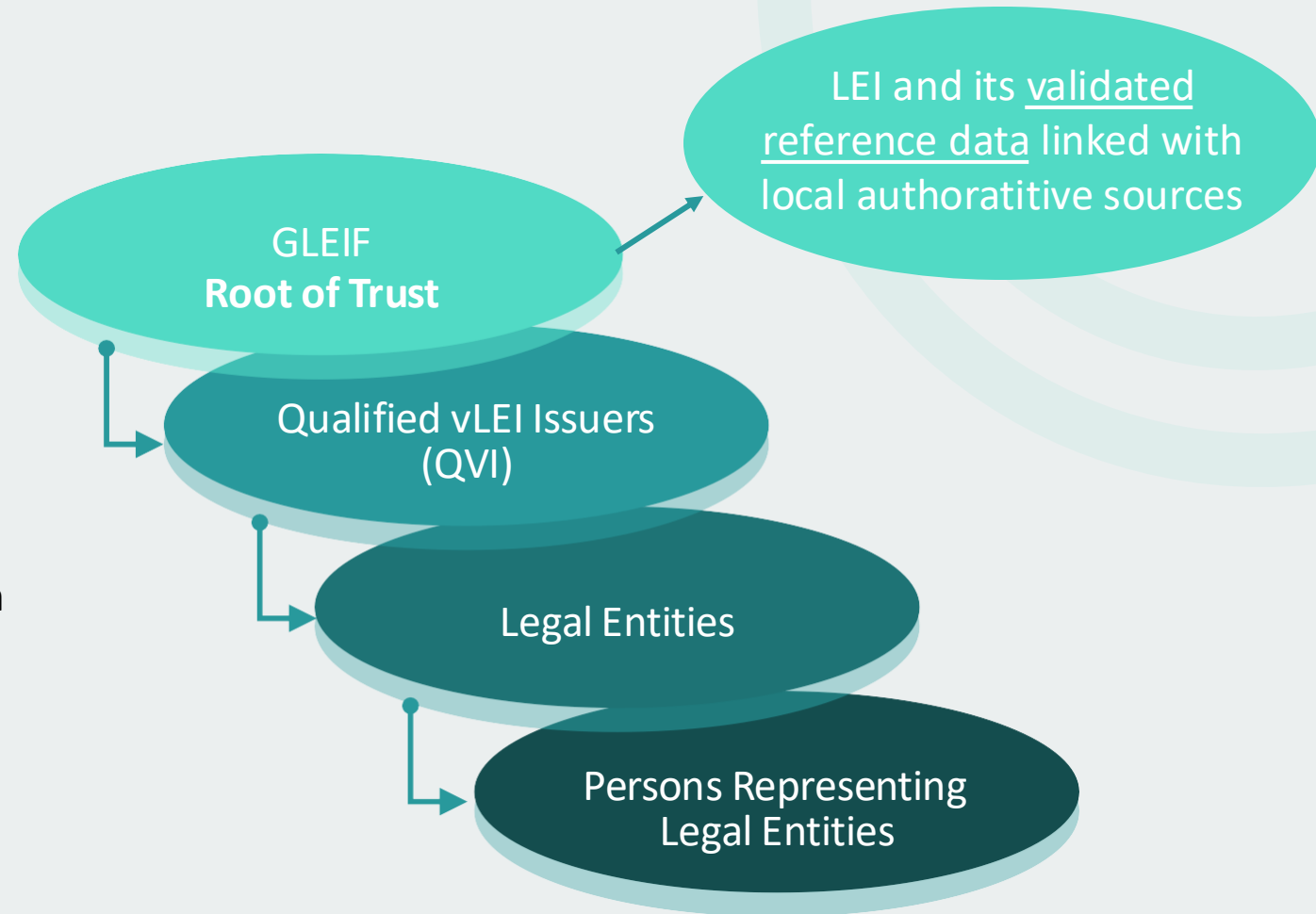
Representing the connection among Organizations, Persons and Roles



The LEI as a Verifiable Credential

The vLEI Trust Chain

- GLEIF is the **Root of Trust**
- GLEIF qualifies a trusted network of **Qualified vLEI Issuers (QVIs)**
- **QVIs** are qualified to issue Entity and Role Credentials ...
 - to Legal Entities
 - to Persons who represent Legal Entities either in official or functional roles



vLEI core functions



Digital signing

Digital sealing or signing (of documents, contracts, reports, invoices, data) by a legal entity or authorized representative



Authentication

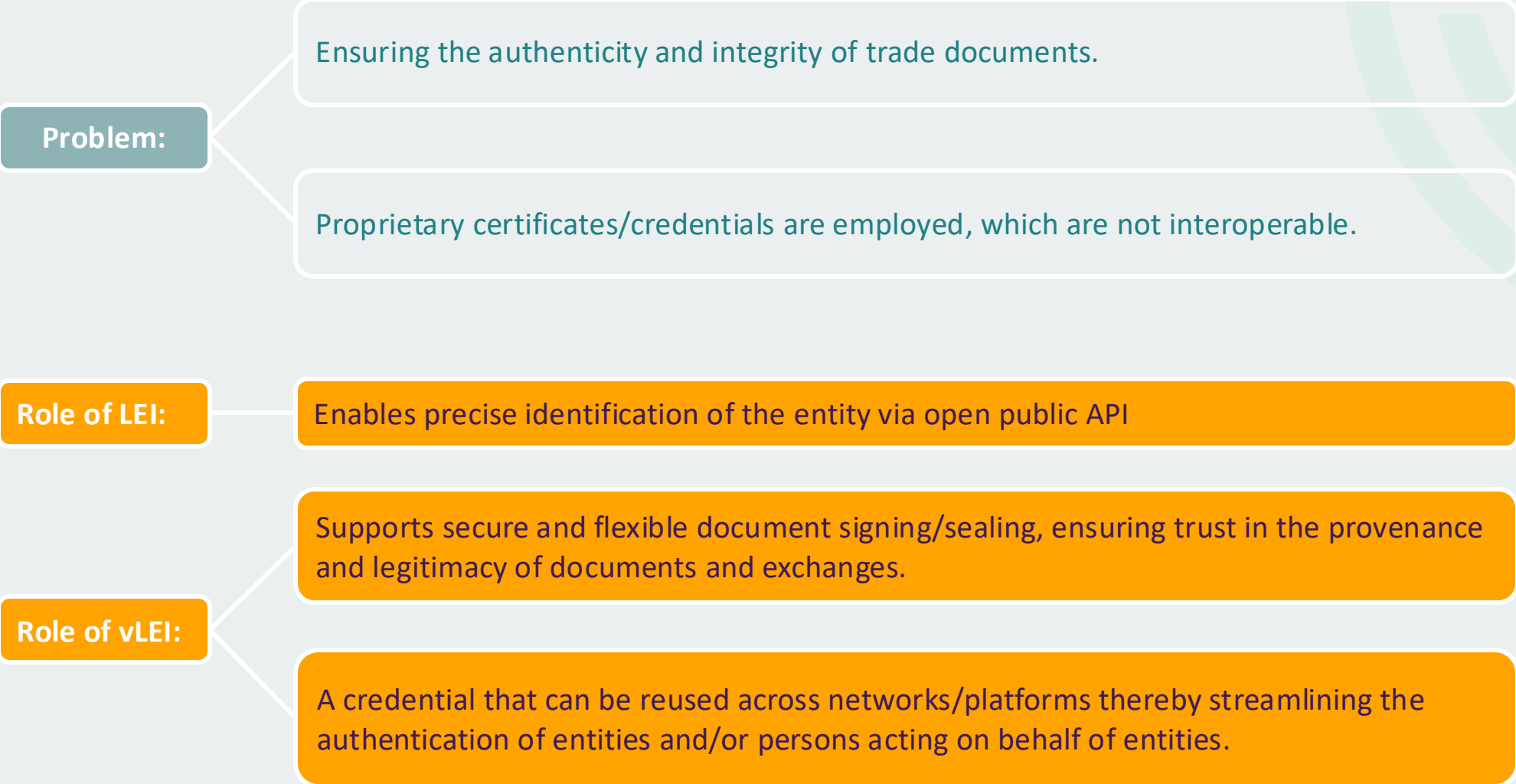
Verification of the cryptographic validity of the vLEI credential and signature



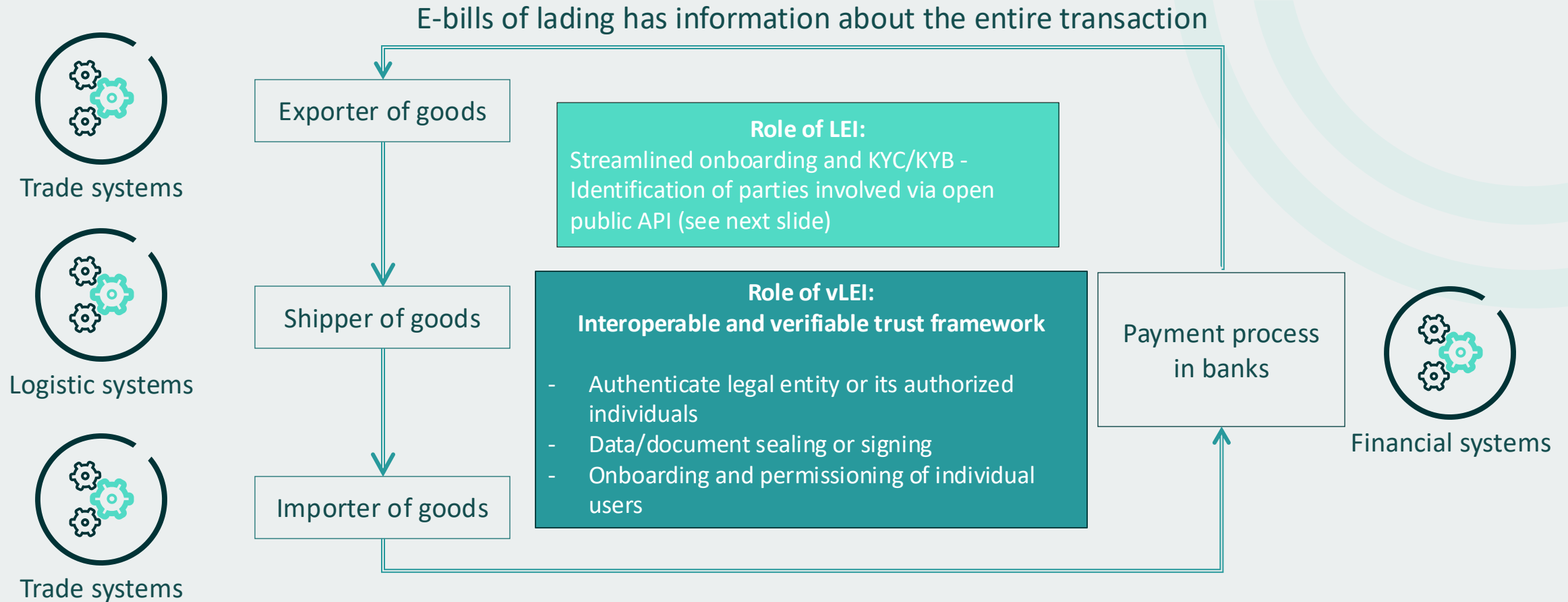
Permissioning

Confirmation that a legal entity, or representative of this legal entity is authorized to access a system or to perform an action

Application of vLEIs - Digital Trade Documents Exchange Platforms



Example: E-bills of Lading



E-bill of Lading: Utilizes vLEI to verify enterprises (and/or their employees) on different digital trade platforms, serving as both a unique identification and an online authentication and document sealing/signing tool.

Identification of parties involved

- 1) Retrieve LEI Data:** Importer of Goods extracts Shipper LEI from vLEI credential and calls [GLEIF API](#) with the LEI of Shipper using endpoint GET LEI Record by ID (LEI) – Level 1 information – and GET Direct/Ultimate Parent Relationships – Level 2 information.
- 2) Verify LEI Policy Conformance:** Assess whether the Shipper LEI data complies with policy requirements; If the LEI is non-conforming, send a [challenge](#) to the Global LEI System. This action alerts the Shipper that its LEI profile is not sufficiently updated or is incomplete for meeting customer due diligence standards. This challenge will prompt the accredited LEI issuer to revalidate the reference data.
- 3) Automated Alerts via GLEIF API:** Importer of Goods leverages the GLEIF API to establish automated monitoring for changes to the Shipper profile (e.g. change in name, address, operating status, ownership and policy conformity). This ensures that client or counterparty information remains accurate, complete, and compliant, facilitating a continuous KYC.

“The integration of LEIs into our platform ensures the accuracy of digital identities, enhancing trust and transparency within our network and sets the stage for platform interoperability. As WaveBL is in search of a globally accepted standard, we have found that the introduction of vLEIs could radically streamline this process by providing a trusted, automated, and universally accepted solution for verifying companies’ digital identities worldwide.”

Noam Rosenfeld, CEO, WaveBL

“We firmly believe that the optimal approach to interconnecting various eBL platforms may not solely rely on a framework addressing technical and legal issues. Instead, it could be achieved through an enterprise-level account system based on a unified ID. This account system has the capability to generate and store diverse electronic documents and even facilitate digital payments, effectively addressing the current challenges of interconnecting eBL from a different perspective. Currently, vLEIs represent the best practice solution for enterprise-level IDs on a global scale. TradeGo will closely collaborate with GLEIF to continuously explore and experiment with vLEIs in various value scenarios in the future.”

Jason Yu, CEO, TradeGo

Source: ICC DSI, Key Trade Documents and Data Elements on the Frontlines

Limitations

- This presentation contains confidential and proprietary information and/or trade secrets of the Global Legal Entity Identifier Foundation (GLEIF) and/or its affiliates, and is not to be published, reproduced, copied, or disclosed without the express written consent of Global Legal Entity Identifier Foundation.
- Global Legal Entity Identifier Foundation, the Global Legal Entity Identifier Foundation logo are service marks of Global Legal Entity Identifier Foundation.