


The Integrated Data Infrastructure and its benefits
for producing and disseminating disaggregated
data

ESCAP May 2016
Aaron Beck

www.stats.govt.nz New Zealand Government



The Integrated Data Infrastructure (IDI)

- a. Motivation
- b. Development and composition
- c. Uses
- d. Future development
- e. Lessons learned

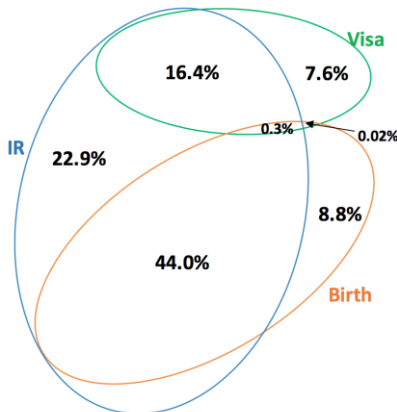
2

www.stats.govt.nz New Zealand Government

Motivation for the IDI

- ⊙ Answer research, policy, and evaluation questions to support informed decision making.
- ⊙ Meeting strategic priorities – such as:
 - Relevant, trustworthy, accessible information
 - More value from official statistics
- [More information Statistic NZ website](#)
- ⊙ A senior champion in government

Development and composition The IDI Spine

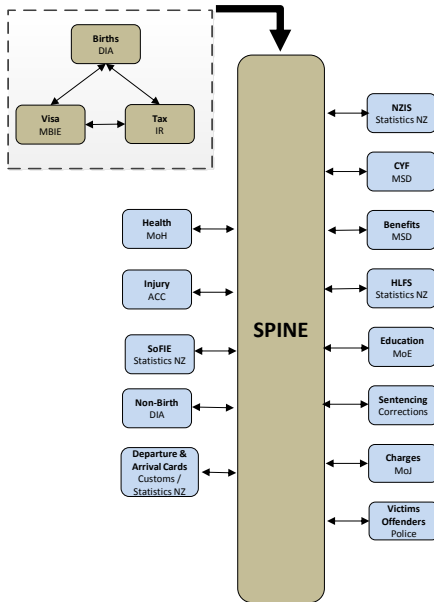


1. People born in NZ,
2. Permanent residents,
3. Those with visas that allow them to reside, work or study in NZ
4. Those living and working in NZ without a requirement for a formal visa (e.g. Australians living in NZ).
5. **It excludes short term visitors (such as tourists).**

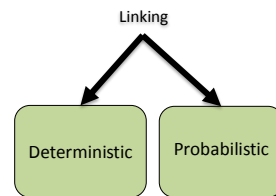
Development and composition Linking errors

Linkage error	Causes	Impact
False positive	1. False links in the spine	Two individuals being counted as one (under-coverage)
False negative	1. Missing links in the spine 2. Missing linkages in the Deaths-Spine link 3. Missing or wrong linkages in the Movements-Spine link	An individual being counted more than once (over-coverage)

5



- 1 IDI proto-type spine created by linking births, tax, and visa data together
- 2 Other sources (aka nodes) are linked with the proto-type spine.



6

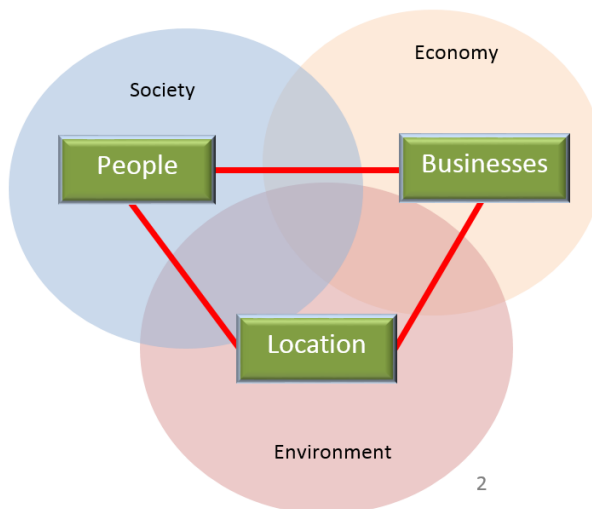
Uses of the IDI

◎ Education statistics

- Compare study outcomes
<http://www.careers.govt.nz/tools/compare-study-options/>
- Retention and completion rates for Maori and Pasifka learners
- Gender pay gaps

7

Integrating the three pillars of Sustainable Development



2

