



Meeting on the Management of Statistical Information System (MSIS 2013)

The Online Reporting System (ORS) of NBS of China: Construction and Application

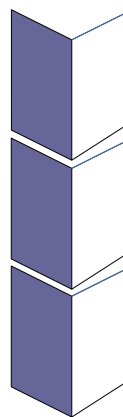
Meng Xianning, Zeng Fei
National Bureau of Statistics of China

April 2013

Bangkok



Catalog



◆ Introduction

◆ Construction

◆ Application



1. Introduction

- The ORS is one of the Four Major Programs of National Bureau of Statistics of China (NBS), including:
 - ✓ Business Register
 - ✓ Integrated Questionnaire for Enterprises
 - ✓ Data Collection and Processing Software
 - ✓ Online Reporting System



1. Introduction

- The ORS is one of the most important elements of the statistical information system construction.
 - ✓ On February , 2012, the National Online Reporting System started its formal operation after about five years of construction, piloting and perfection.



1. Introduction — what is ORS

- It is a data collection system, by which has achieved the work pattern:
 - respondents and enumerators can submit raw data directly to National Data Management Center via the Internet
 - statistical agencies at all levels can share the data online



1. Introduction

—Traditional way of reporting has been changed

➤ Traditional way

progressive statements reporting :

Enterprise → County → City → Province → Nation

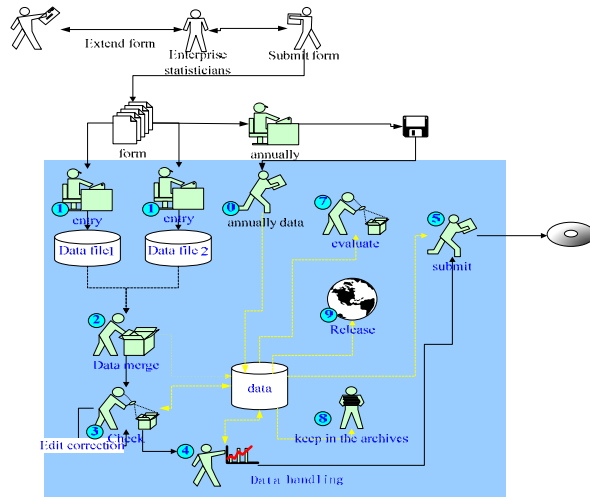
➤ ORS

Enterprise → National Data Management Center



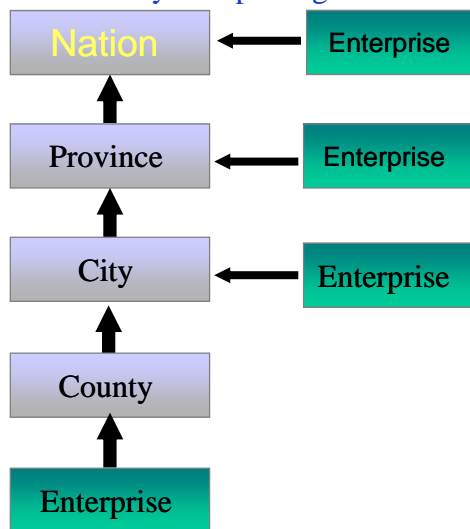
1. Introduction

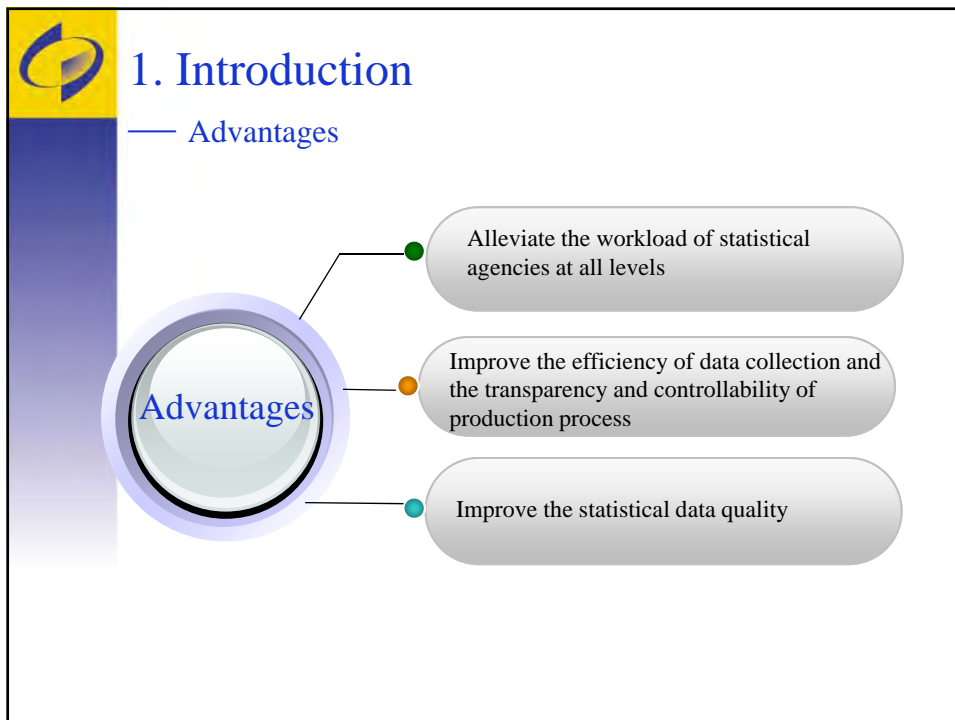
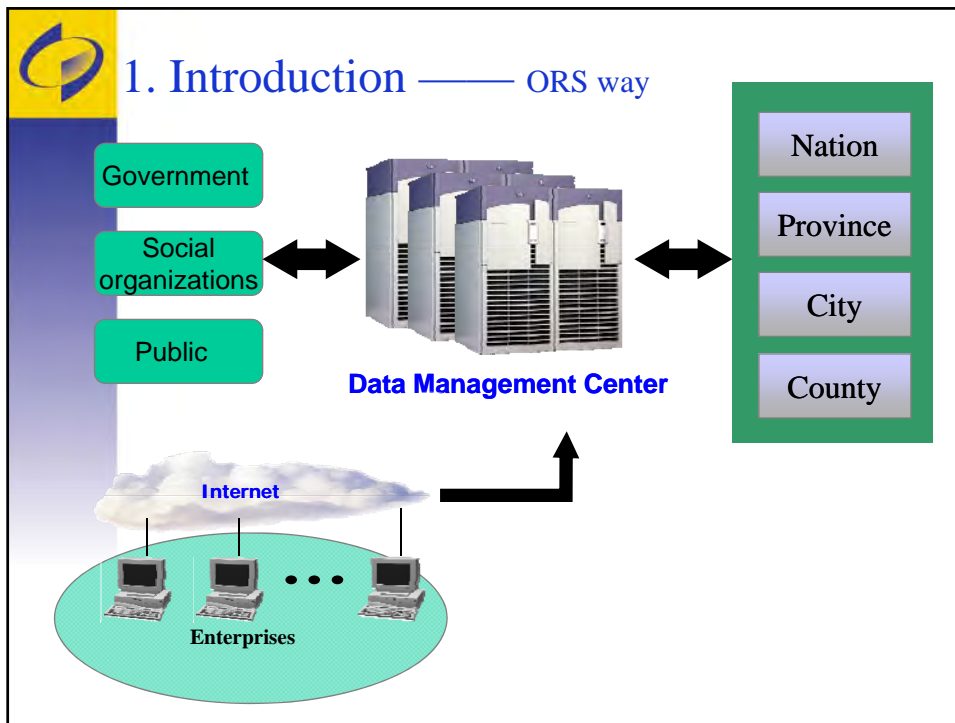
— An example: County statistical agencies



1. Introduction

— Traditional way of reporting







1. Introduction

— Challenges

- In designing stage
 - ✓ To ensure security
 - ✓ To improve performance and efficiency
 - ✓ To eliminate short-board effect
- In advocacy and training stage
 - ✓ change and adaptation
 - ✓ large-scale training
- In application stage
 - ✓ easy to operate
 - ✓ easy to receive

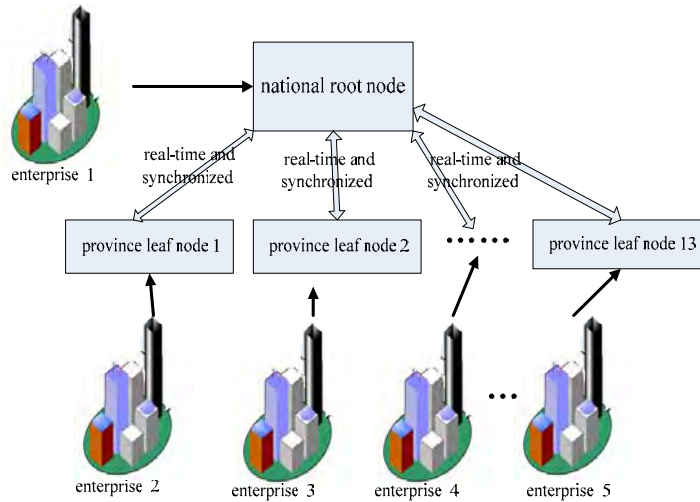


2. Construction— ORS components

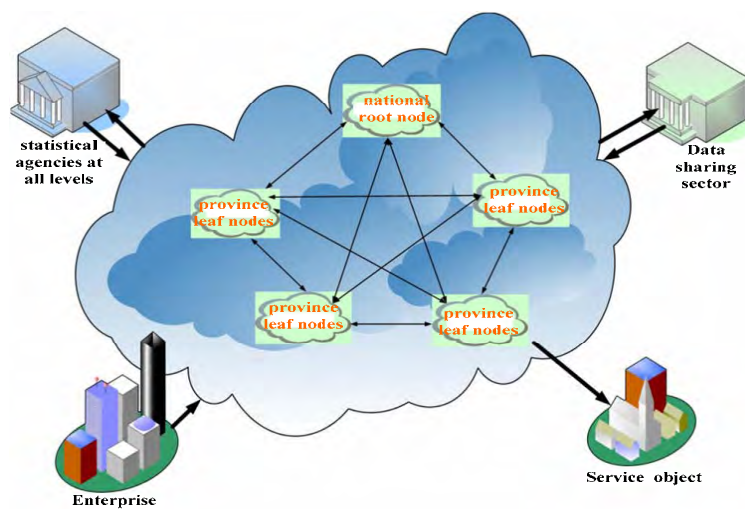
- The ORS components:
 - ✓ Reporting portal website
 - ✓ Security authentication system
 - ✓ Network exchanging system
 - ✓ Data collection system
- Complementary supporting devices :
 - ✓ F5 overload balancing device
 - ✓ Gateway of security authentication
 - ✓ Network bandwidth enhancer, etc.



2. Construction—— ORS deployment



2. Construction—— ORS deployment (future mode)





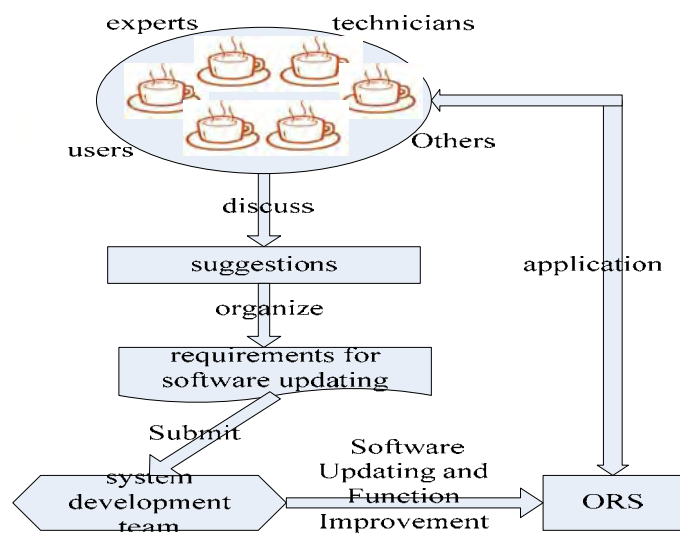
2. Construction— Maintenance

- Dedicated expert team to supervise the monthly data reporting and to monitor peaking data streams, the stability of the system in terms of networking, security authentication and application software is ensured.
- Through testing and trials, the performance and stability of ORS have been largely improved.



2. Construction

— Software Updating and Function Improvement





2. Construction— System Security Enforcement

- Draft information security guidance ;
- Implemented a series of security enhancement and other effective security measures ;
- Our data protection deployed through management level down to technical level ;
- The amount of successful anti-attack interception achieved over ten thousand per month;
- Over 700,000 enterprises and organizations received CA certification, identity authentication and data transmission encryption services .



2. Construction— Others

- Contingence Strategy : implemented a secondary data storage system for ORS;
- Technical Support : construction of the ORS Supporting Calling Center;
- Training : for technicians and experts, for enterprise statisticians;
- Publicity : to gain support and cooperation from the public ;



3.Application— Current situation

处理码: 11020012014 北京市西城区海润社区管理服务中心中国农业大学丰台区社区居委会

法人单位基本信息

表号: 2011-1 册
填报日期: 2011.02.14
统计周期: 2011.1.1-2011.1.2

101	组织机构代码	11020012014	102	单位名称	北京京能电力电子技术有限公司
103	行业类别 (主要业务活动或主要产品)	行业代码	104	行业类别 (详细)	
	1. 电力供应和热力生产	2. 电力供应管理活动		1. 批发和零售业	2. 制造业
				3. 建筑业	4. 交通运输业
				5. 信息传输业	6. 房地产业
				7. 金融业	8. 其他服务业
105	单位所在地行政区划	行政区划代码	106	城乡代码	
	北京市	110200		1. 市辖区	2. 县
	西城区	000000		3. 镇	4. 乡
	海润社区	000000		5. 村委会	6. 居委会
107	单位所属街道办事处	街道办事处代码	108	单位性质	
	北京市西城区海润社区	110200000000000000		1. 国有	2. 集体
	中国农业大学	110200000000000000		3. 股份合作	4. 私营
	中国农业大学	110200000000000000		5. 其他	6. 其他
109	单位规模	1. 小型	110	从业人数	
	2. 中型	3. 大型		从业人数	
111	企业注册年份	1. 1978-1984	112	企业注册年份	
	2. 1985-1989	3. 1990-1994		企业注册年份	
	4. 1995-1999	5. 2000-2004		企业注册年份	
	6. 2005-2009	7. 2010-2011		企业注册年份	

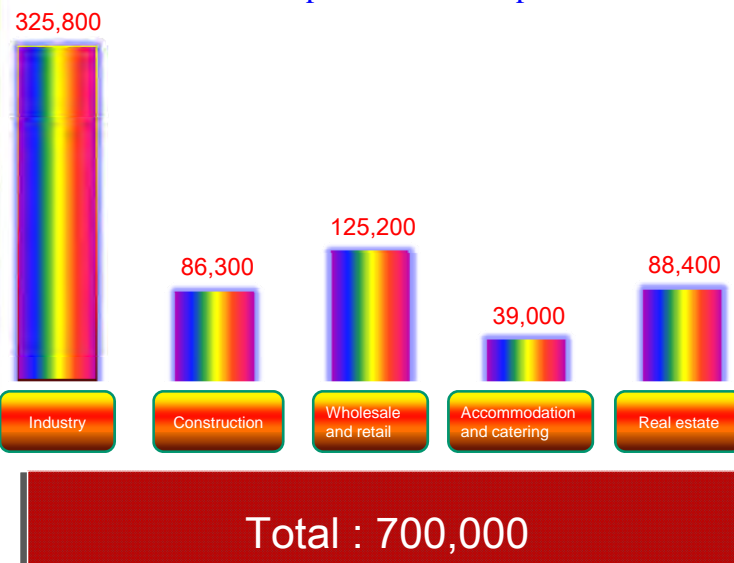
➤ On February, 2012, the ORS started its formal operation.

➤ Since then, more than 700,000 scale-above enterprises submit their raw data directly to NBS via this system, both annually and termly.



3.Application

— Numbers and composition of enterprises





3.Application— Aim in next step

- To utilize online reporting for statistical surveys in main professions.
 - e.g. To expand online reporting to labor payments, service industry, prices of industrial products and other professions.



Thank you

