

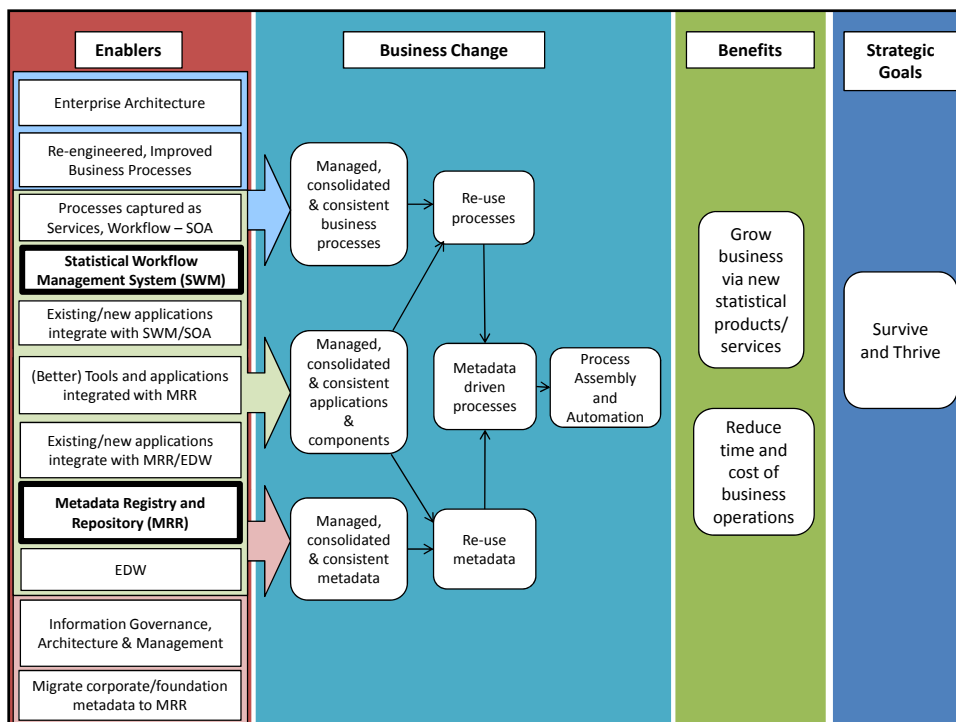
Information Infrastructure: Foundations for ABS Transformation

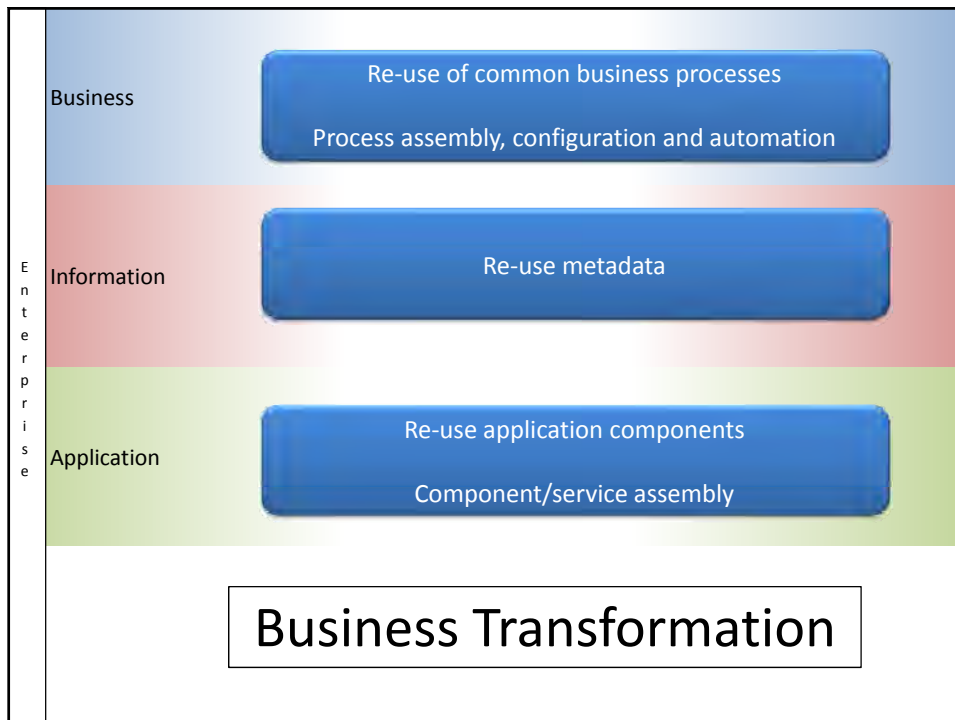
Stuart Girvan,
Australian Bureau of Statistics
MSIS Paris, April 2013

Outline

- ABS 2017 Transformation Vision and Information Infrastructure
- Metadata Registry and Repository (MRR) & Statistical Workflow Management system (SWM)
- Achievements so far
- What's next?
- The journey

VISION FOR ABS 2017 TRANSFORMATION & THE ROLE OF INFORMATION INFRASTRUCTURE





The role of MRR and SWM

- MRR and SWM provide foundations for processes and metadata to be:
 - Managed
 - Consistent
 - Discoverable
 - Governed
 - Executable
- Ultimately, re-usable, easily assembled, and in the case of processes, automatable

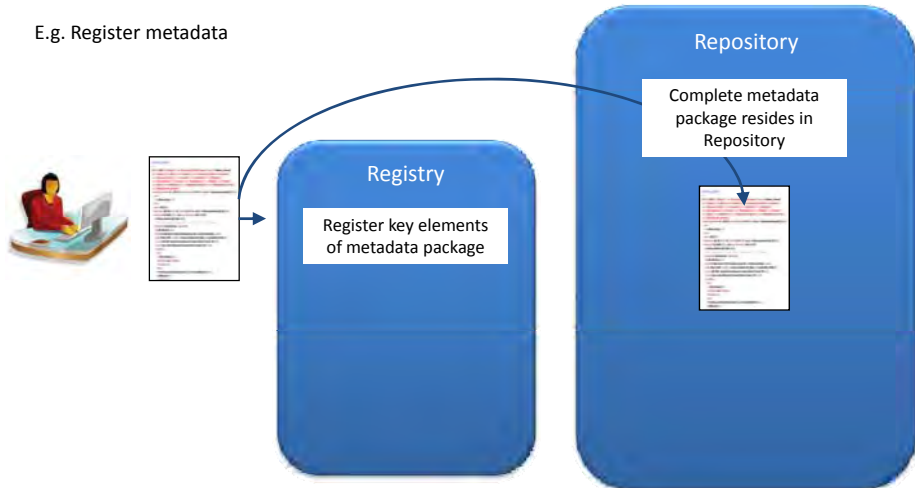
MRR AND SWM

What is MRR?

- The Metadata Registry and Repository consists of two parts:
 - Repository – the centralised store for standards based metadata
 - Registry – the catalogue that tells you what's in the repository

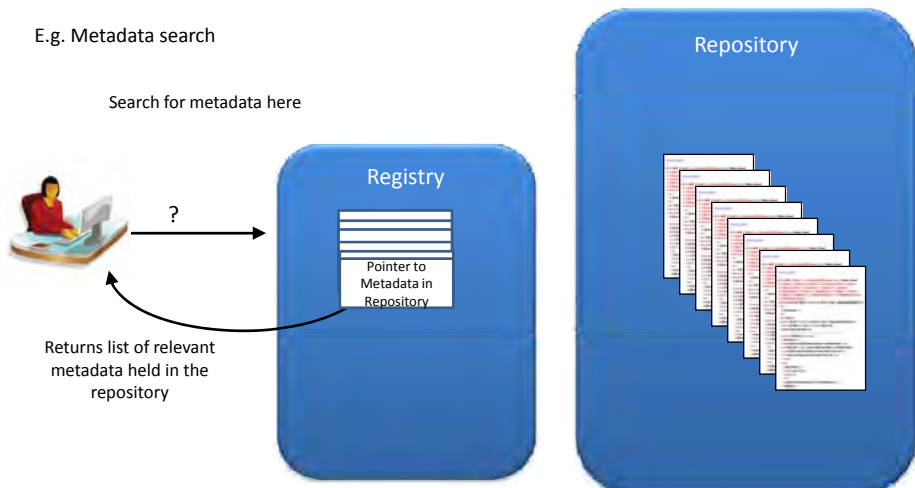
MRR – Registering & Retrieving Metadata

E.g. Register metadata



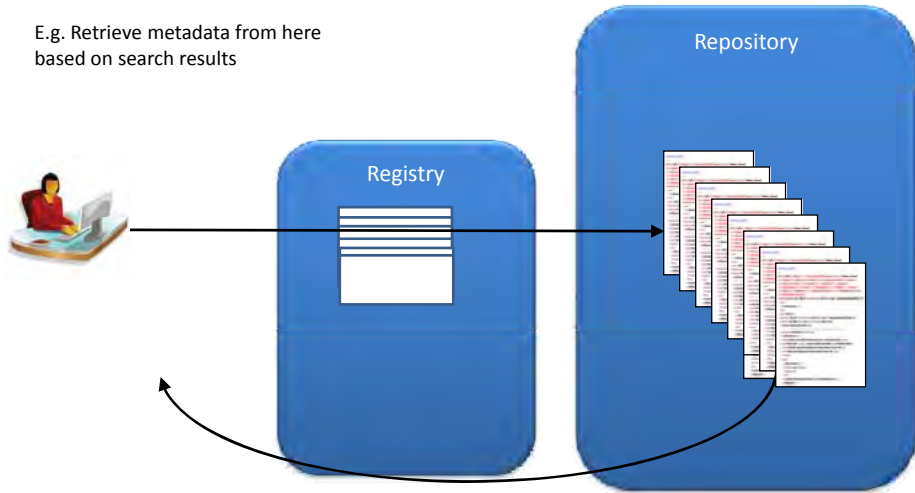
MRR – Registering & Retrieving Metadata

E.g. Metadata search

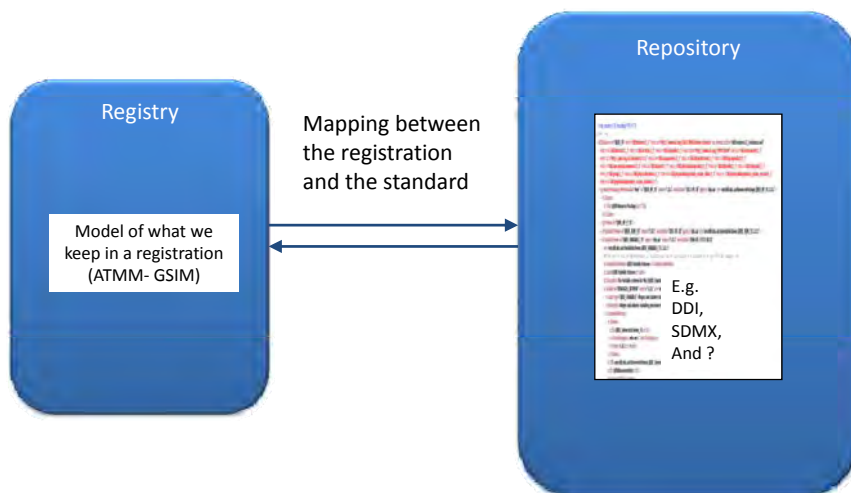


MRR – Registering & Retrieving Metadata

E.g. Retrieve metadata from here based on search results



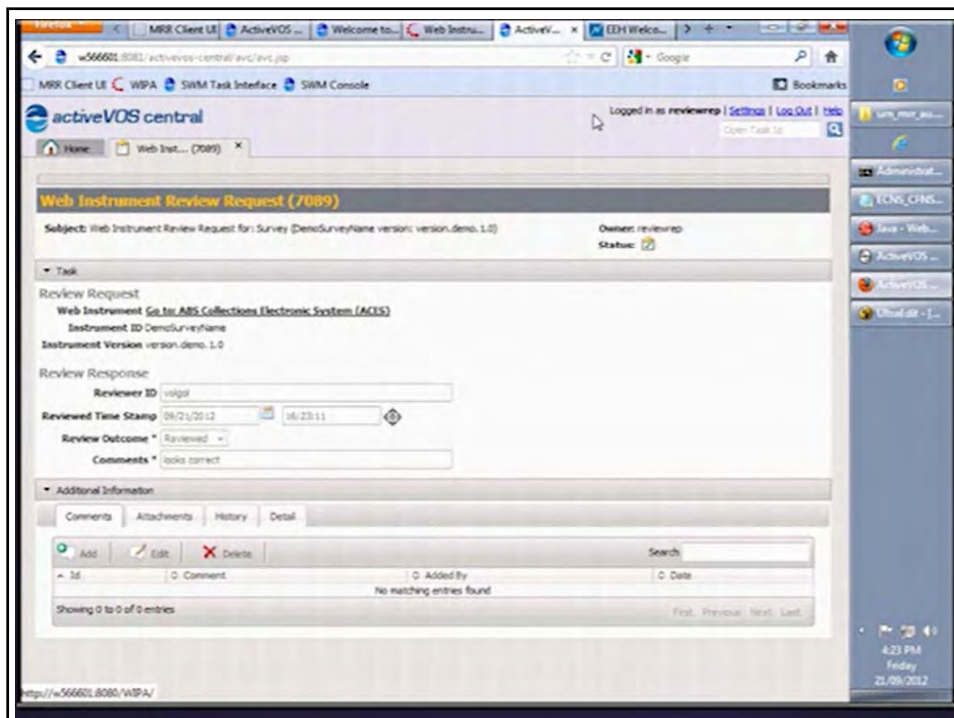
MRR & standards



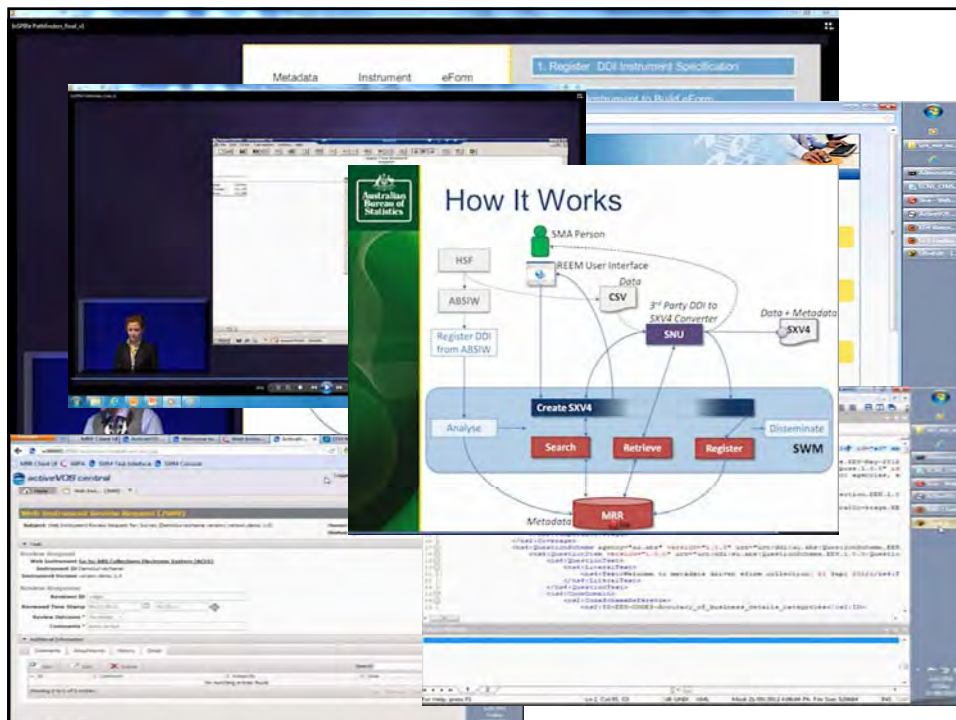
This will be the metadata content in the most appropriate standard (DDI, SDMX, etc)

What is SWM?

- Statistical Workflow Management System
- ActiveVos (BPMS)
 - + governance (e.g. Alignment of new processes to business architecture, Duplication of existing processes?)
 - + processes for building workflow and orchestration
 - + role and responsibilities



WHAT WE HAVE DONE SO FAR AND WHAT'S NEXT



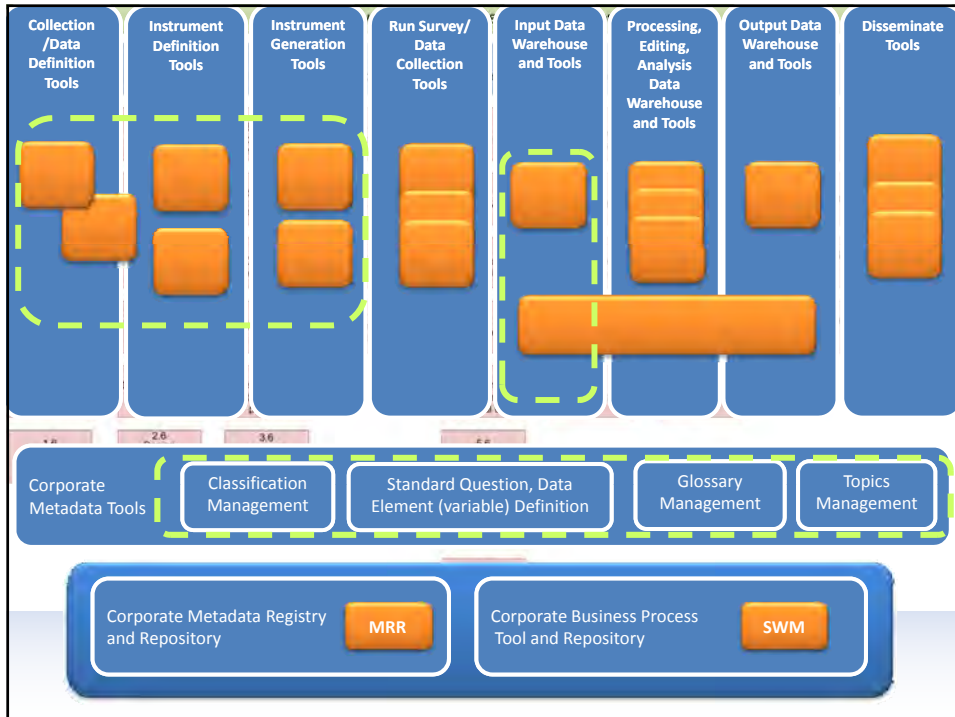
What have we learnt?

- MRR works
- DDI/SDMX successfully used
 - E-forms generation
 - Table production for analysis
 - Metadata queries for end user data sets

What have we learnt?

- SWM good for
 - doing things quickly
 - joining things up
 - coordinating and re-using processes
 - handling long, asynchronous events
- Exposes and documents business process

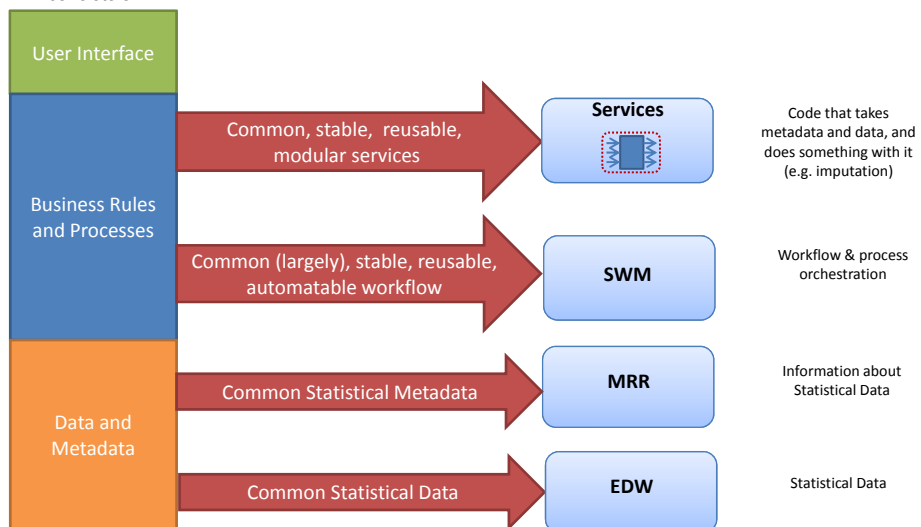
What's next?



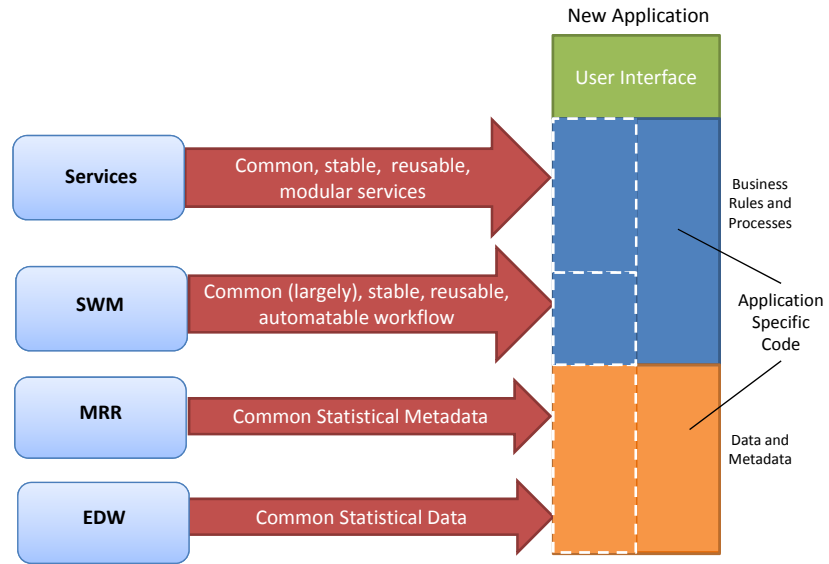
REACHING THE VISION

Vision for Re-use: Existing Applications/Tools decomposed into re-usable bits

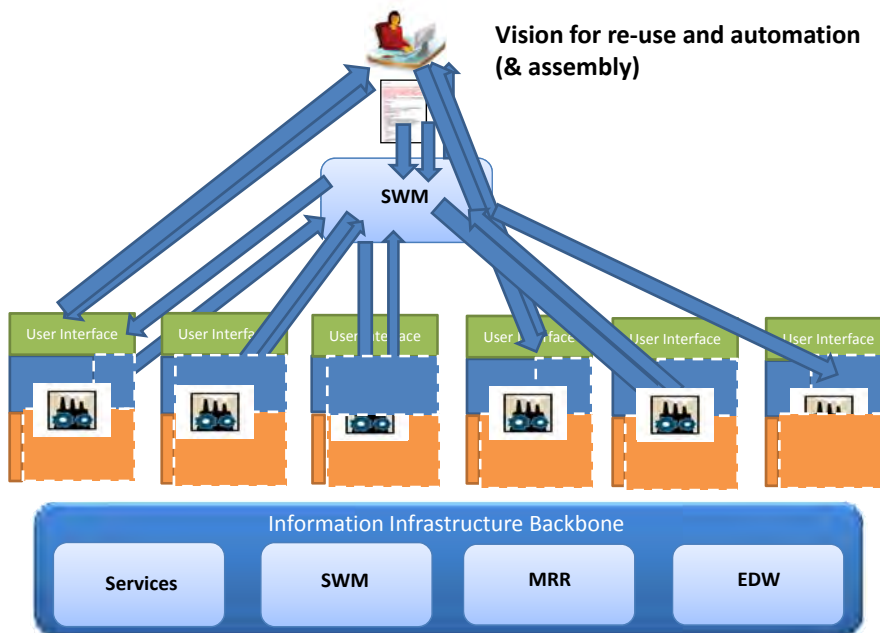
Any given application consists of



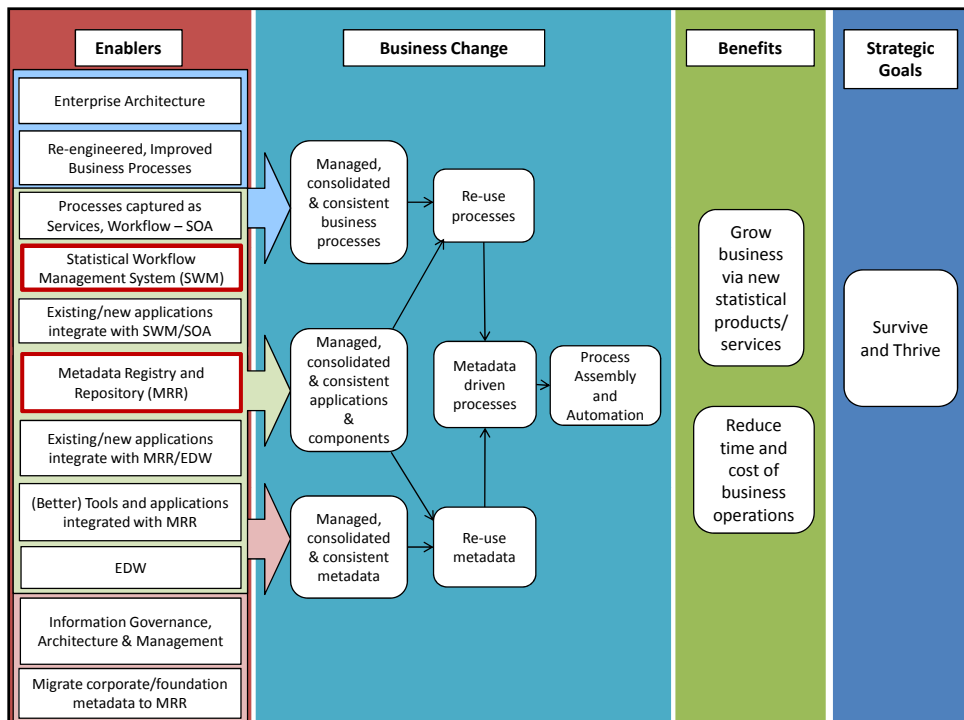
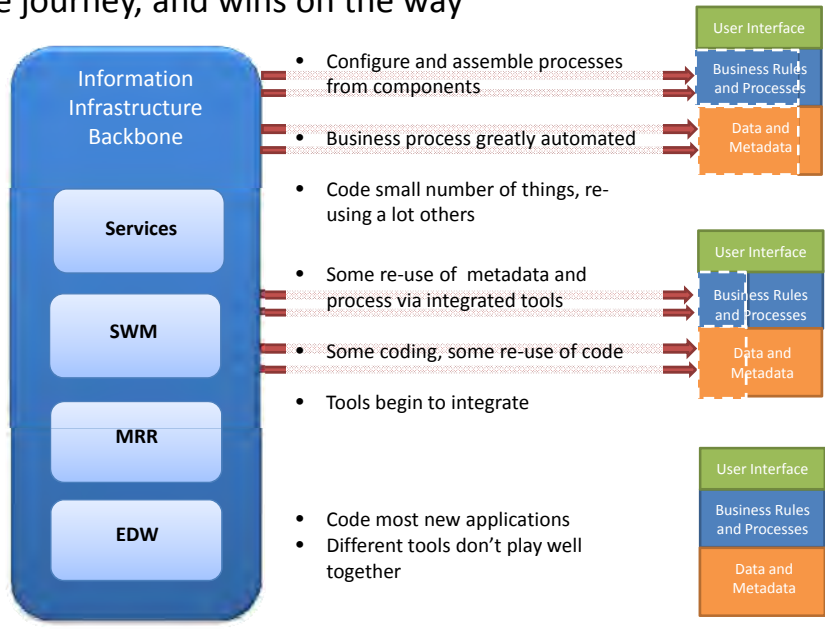
Vision for Re-use for New Applications/Tools



Vision for re-use and automation (& assembly)



The journey, and wins on the way



QUESTIONS?

Contributors: Chris Conran, Simon Wall, Gillian
Nicoll