
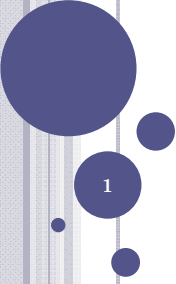




USING C-CUBE TO SUPPORT THE STATISTICAL WORK OF ADB

Artur Andrysiak
Statistician
Economics and Research Department
Asian Development Bank



OVERVIEW

- Basics
- Building Blocks of On-line Spaces
- Access Rights and Security
- Use of C-Cube within ERDI
- Some pros of C-Cube On-line Spaces
- Demo



ADB Asian Development Bank
STATISTICS for Dynamic Policy Making

C-CUBE: BASICS

- Based on Lotus Quickr developed by IBM
- Tool that is intended to provide on-line space for working groups and communities
- Initially developed by the ADB to facilitate knowledge sharing of Communities of Practice
- Used in ERDI to support a range of statistical activities

3

ADB Asian Development Bank
STATISTICS for Dynamic Policy Making


C-CUBE: BASICS

Coordination

- Calendar
- Tasks
- Notifications

Collaboration

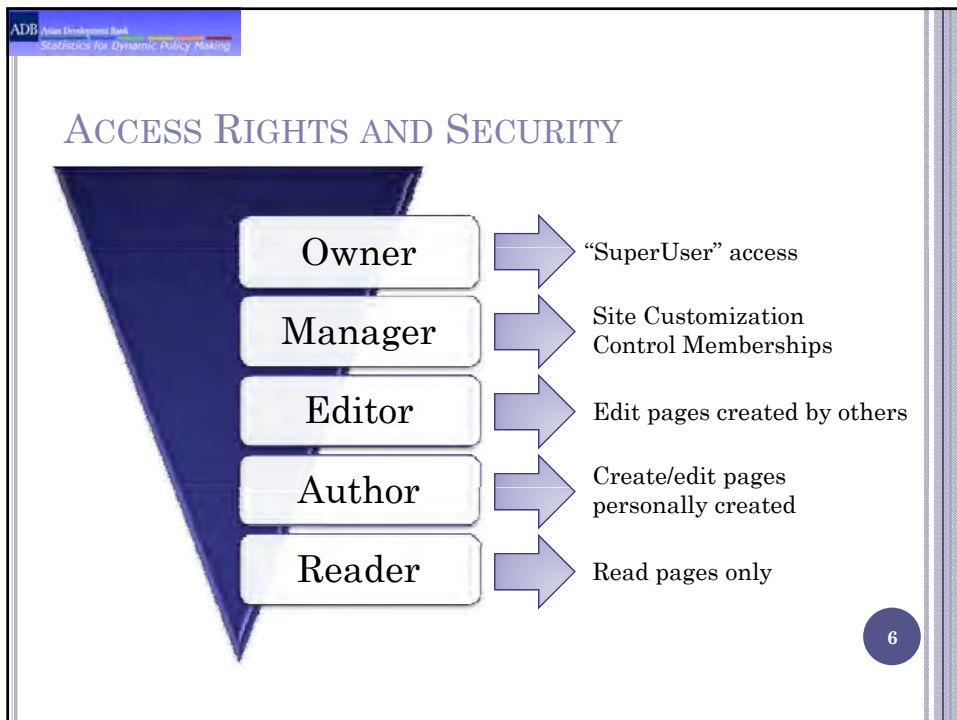
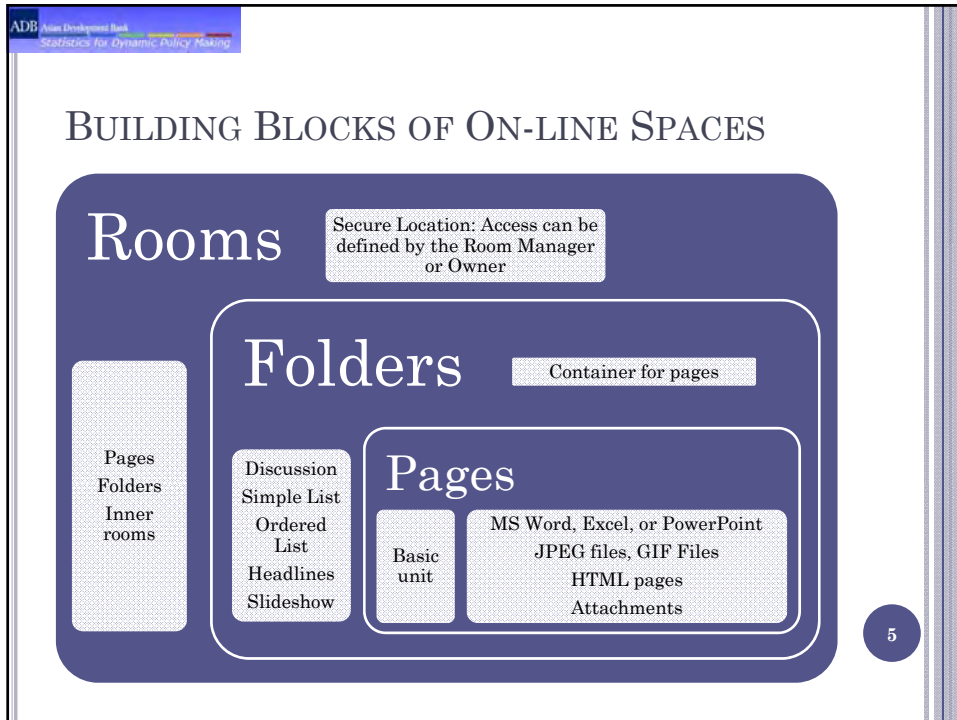
- Create Pages - Share Ideas
- Document Storage
- Document Versioning
- Work Offline feature



Communication

- Discussion Forums
- Newsletters and Feeds
- Online Chats

4



ADB Asian Development Bank
Statistics for Dynamic Policy Making

USE OF C-CUBE WITHIN ERDI

- International Comparison Program
- Agricultural and Rural Statistics
- *Key Indicators for Asia and the Pacific*

7

ADB Asian Development Bank
Statistics for Dynamic Policy Making

INTERNATIONAL COMPARISON PROGRAM COMMUNITY

- Supports the compilation of the ICP 2011 results
- Tool for exchange of highly sensitive and confidential data between ADB and the participating economies
- Permits exchange of large data files
- Based on the multiple rooms approach with each room dedicated to a particular national organization and protected by password
- Ensures that sensitive information is given utmost protection, but also provides a basic environment for easy two way communication and data exchange

8

ADB Asian Development Bank
Statistics for Dynamic Policy Making

CARS (COMMUNITY FOR AGRICULTURAL AND RURAL STATISTICS)

- Brings together users and producers of agricultural and rural statistics
- Provides a forum for discussion and exchange of ideas
- Focus on sharing of knowledge, creation of joint documents and facilitating communication among members
- Emphasis on features such as: discussion forums, online chats, library/document versioning and meeting room
- Members can easily access uploaded documents, provide comments, chat on-line and access latest news
- Has been used in combination with Lotus Notes Sametime facility to hold on-line meetings and conduct seminars and workshops

9

ADB Asian Development Bank
Statistics for Dynamic Policy Making

KEY INDICATORS FOR ASIA AND THE PACIFIC COMMUNITY

- Intended to provide a forum that brings together producers of statistics in the KI publication from the ADB statistical partners
- Primary purpose to provide a platform for regular communications and secure statistical data exchange between the data providers and ADB KI team
- Forum for exchange of ideas for improving the content and quality of KI and a platform for discussion among the partners on statistical issues including practices and methods, as well as a library of useful statistical materials
- Brings together some of the ideas behind the ICP C-Cube and CARS
- Provides a user friendly environment for sending out country questionnaires and receiving responses
- Permits effective storage of knowledge and tracking the interactions between ADB country experts and their national counterparts
- Testing to date has been promising and it is envisaged that limited use will take place during the 2013 KI cycle

10

ADB Asian Development Bank
Statistics for Dynamic Policy Making

SOME PROS OF C-CUBE ON-LINE SPACE

Basic tool


Offers a range of useful features

Simple to use

Suits needs of wide range of communities and on-line groups

Easy to design and create

Provides good security



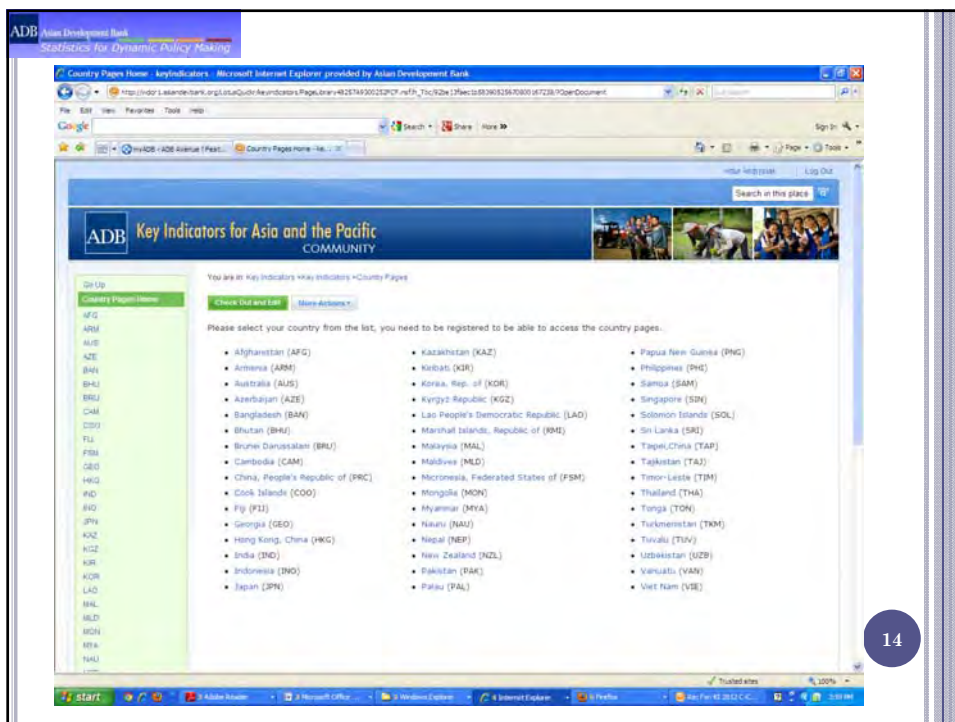
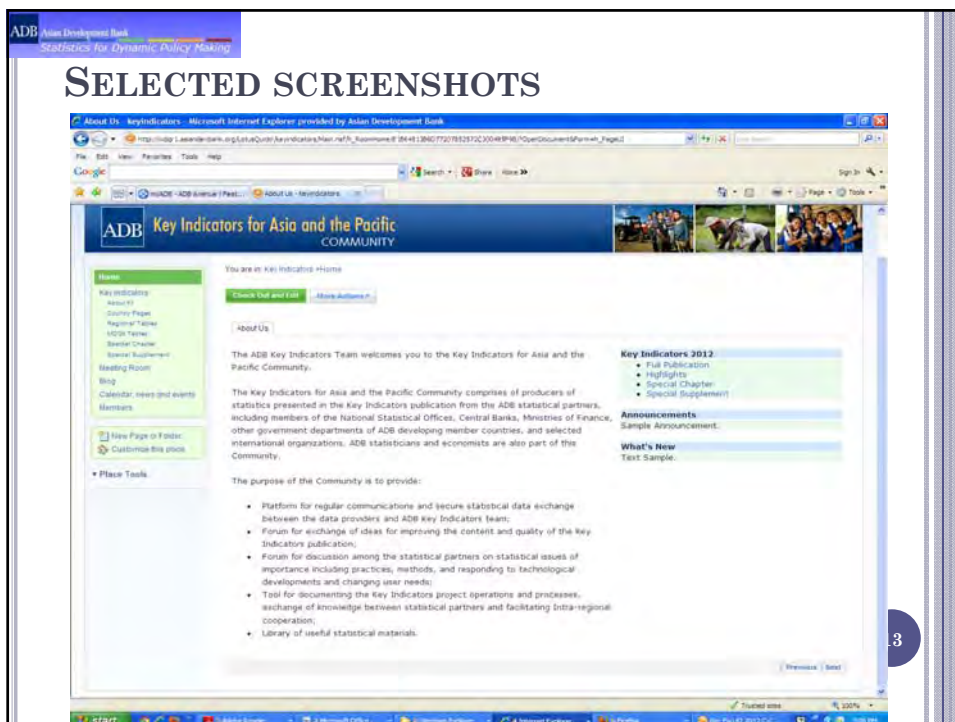
Changed the way ADB interacts with its statistical partners including data providers

11

ADB Asian Development Bank
Statistics for Dynamic Policy Making

THANK YOU

12



ADB Asian Development Bank
Statistics for Dynamic Policy Making

K12013 Questionnaire - Key Indicators - Microsoft Internet Explorer provided by Asian Development Bank

ADB Key Indicators for Asia and the Pacific
COMMUNITY

K12013 Questionnaire
Request: Prepared for Data Updates for the 2013 Key Indicators

Dear Sir/Madam:

Enclosed is the letter from our director, Mr. Douglas Elliott requesting for data for the 2013 key indicators and the corresponding questionnaires at ADB Excel spreadsheet. Your contribution will be a valuable input to Afghanistan country table for the 2013 key indicators. We hope to receive your reply by 23 April 2013. Thank you very much.

[View Feed](#) [Share Address](#)

Show Filter Navigator		Created On	Issued By	Modified On	Download
<input type="checkbox"/>	Type: The	11/08/2012	Rhommel S. Roco	11/08/2012	↓
<input type="checkbox"/>	AFG CSO Official Letter	10/24/2012	Rhommel S. Roco	10/25/2012	↓
<input type="checkbox"/>	ES-APG CSO Questionnaire Long Series	10/24/2012	ADB Andriana	11/19/2012	↓
<input type="checkbox"/>	ES-APG CSO Questionnaire Long Series	10/24/2012	Rhommel S. Roco	10/25/2012	↓
<input type="checkbox"/>	ES-APG CSO Questionnaire	11/19/2012	ADB Andriana	11/19/2012	↓

Hide all responses

15