

## Hunger in Asia and the Pacific Region

- **Measuring Progress: three methods**
- **Undernourished, Food Balance Sheet (FBS)**
- **Undernourished, Household Budget Survey (HBS)**
- **Underweight,**
  - (weight for age, children under 5 years)

**Using data in evidence-based decision-making.**

**Launch of DevInfo version 6.0 in Asia and the Pacific**

2- 5 February 2010. Siem Reap, Cambodia



## Hunger in Asia and the Pacific Region

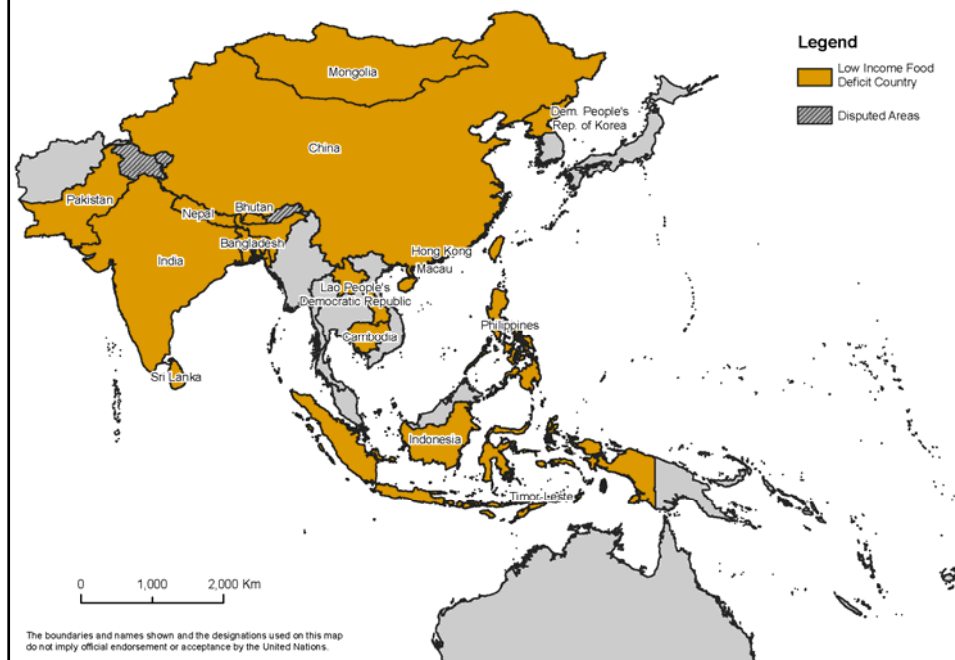
Asia and the Pacific have:

- More than two-thirds of the developing world's population
- Nearly two-thirds of the developing world's undernourished population
- A prevalence rate of 16 percent of undernourishment, second only to that of Africa

Source: FAO State Of Food Insecurity



## Low Income Food Deficit Countries (LIFDC) (FAO 2006)



## Low Income Food Deficit Countries

- Afghanistan
- Pakistan
- India
- Nepal
- Bangladesh
- Bhutan
- Sri Lanka
- Lao People's Democratic Republic
- Cambodia
- Philippines
- Indonesia
- Timor-Leste
- Democratic People's Republic of Korea
- *China*
- *Mongolia*

SOURCE <http://www.fao.org/countryprofiles/>

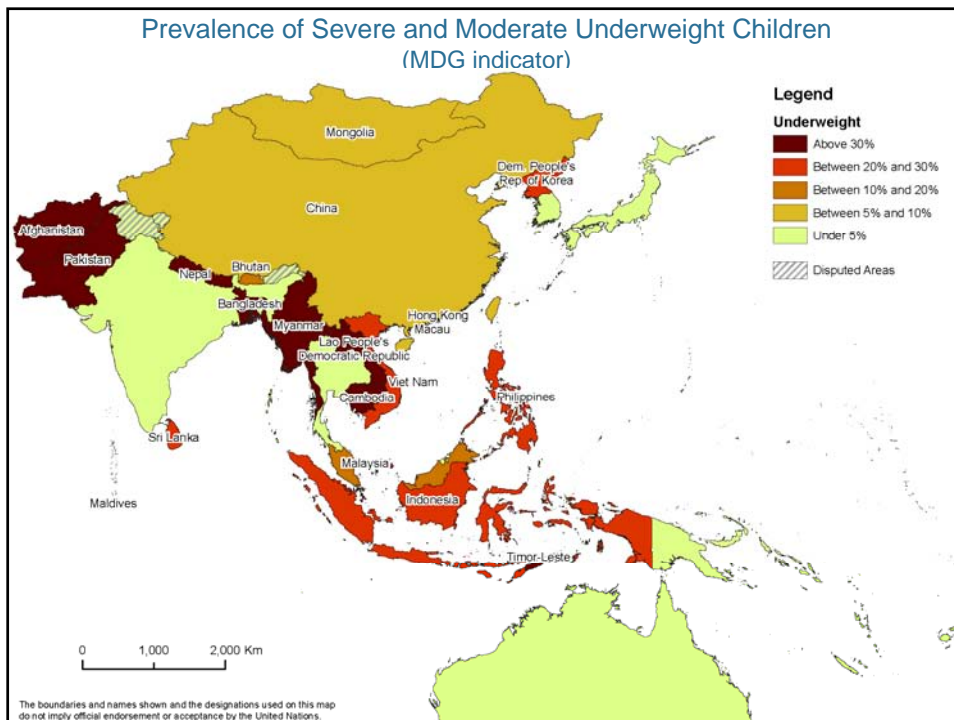


## Prevalence of Undernourished in total population (FAO)

Country Name	1990-1992	1995-1997	2000-2002	2004-2006	Millions
Bangladesh	36	40	28	26	40
Pakistan	22	18	21	23	37
India	24	20	21	22	252
Sri Lanka	27	24	20	21	4
Nepal	21	24	19	16	4
Cambodia	38	41	27	25	4
Timor-Leste	18	13	15	23	0.2
Lao People's Dem Rep	27	26	22	19	1
Myanmar	44	34	26	17	8
Thailand	29	21	20	17	11
Indonesia	19	13	17	16	37
Philippines	21	18	17	15	13
Viet Nam	28	21	17	13	11
Korea, Dem People's Rep.	21	31	34	32	8
Mongolia	30	40	25	29	0.7
China	15	12	10	10	127



## Prevalence of Severe and Moderate Underweight Children (MDG indicator)



## Prevalence of underweight (weight for age) in children under the age of five years (percent)

Country name	Survey Year	Age class (in month)	Moderate Underweight (less than - 2 s.d.)
India	2005-06	0-59	48
Bangladesh	2007	0-59	46
Nepal	2006	0-59	45
Afghanistan	2003-04	6-59	39
Pakistan	2001-02	0-59	38
Sri Lanka	2000	3-59	29
Bhutan	1999	6-59	19
Timor-Leste	2007	0-59	49
Lao People's Democratic Republic	2006	0-59	37
Cambodia	2005	0-59	36
Myanmar	2003	0-59	32
Indonesia	2003	0-59	28
Philippines	2003	0-59	28
Viet Nam	2006	0-59	20
Thailand	2005-06	0-59	9
Democratic People's Republic of Korea	2004	0-71	23
China	2005	0-59	7
Mongolia	2005	0-59	6



World Food Programme

## (N) Undernourished vs Underweight

- Undernourished rate is low but malnutrition rate in children remains high:
  - Nepal                    16 % undernourished    vs 45 % underweight
  - India                     22 % undernourished    vs 48 % underweight
  - Pakistan                23 % undernourished    vs 38 % underweight
  - Timor Leste:            23% undernourished    vs 45 % underweight,
  - Lao PDR                19% undernourished    vs 37 % underweight
  - Myanmar:              17% undernourished    vs 32 % underweight,
  - Indonesia:             16% undernourished    vs 28 % underweight
  - Cambodia              25 % undernourished    vs 36 % underweight



World Food Programme

## Undernourished: 2 methods.

### Food Balance Sheet (FBS)

- + Agricultural production: e.g. MT rice + maize + wheat
- + Imports
- Exports
- Consumption by population

### Household Budget Survey (HBS)

- Household Income Expenditure Survey (HIES)
- Living Standards Measurement Survey (LSMS)

Household expenditure on Food items

Market prices - determine weight / amount of food consumed

Food Composition Table – determine caloric value



## Undernourished: 2 methods compared

- Undernourished – Two methods used by FAO. Different results

Food Balance Sheet (FBS) versus  
Household Budget Survey (HBS)

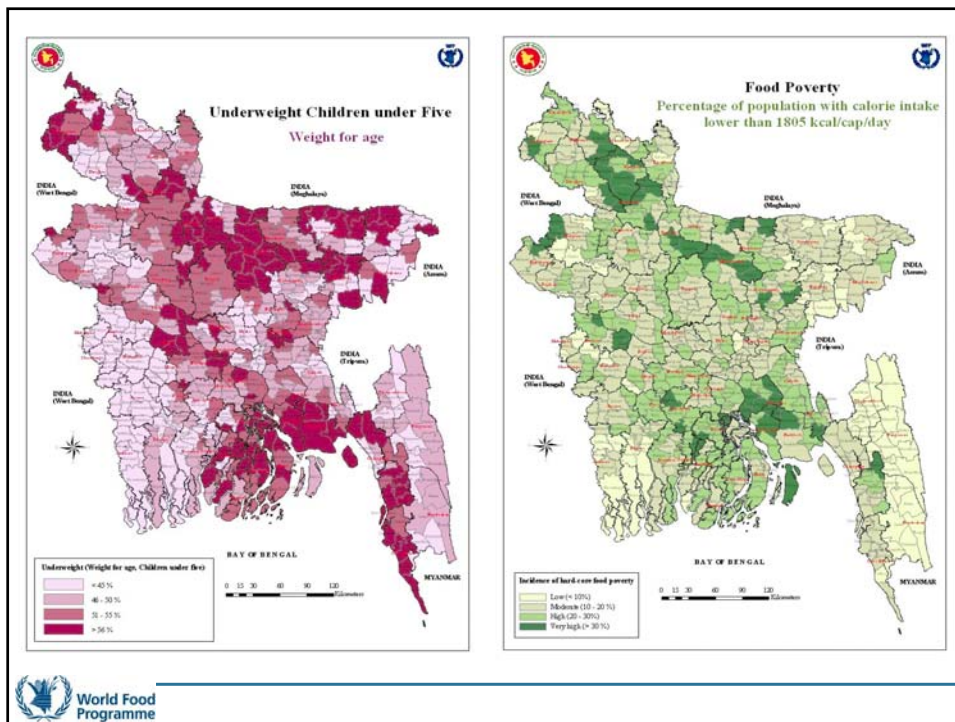
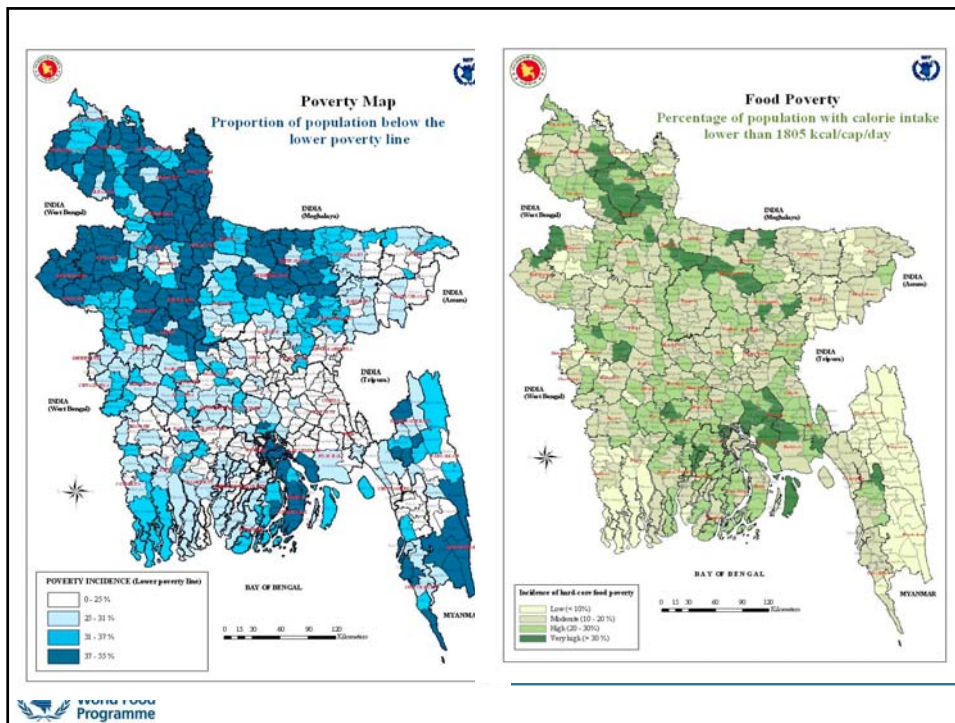
### - Nepal

- 16 % FBS vs 35 % HBS (vs 45 % underweight)
- Nepal Living Standards Survey (NLSS) 2003/2004

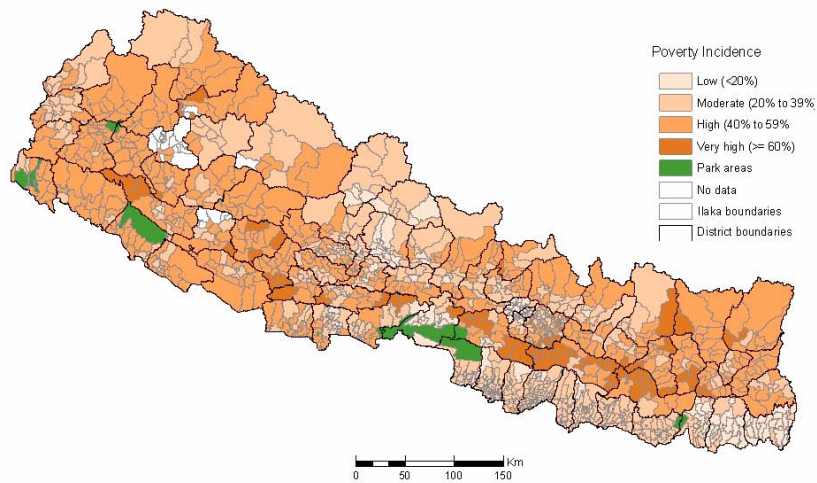
### - Lao PDR

- 21 % FBS vs 31 % HBS (vs 40 % underweight)
- Lao Expenditure and Consumption Survey (LECS) III 2002/2003

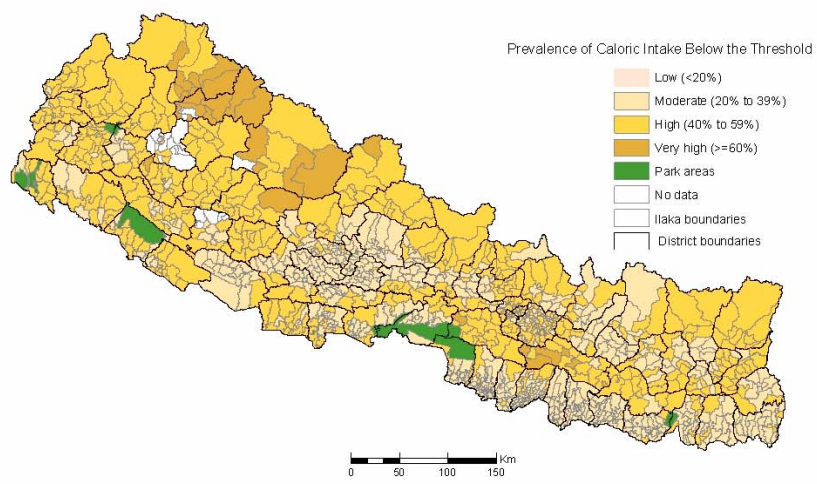


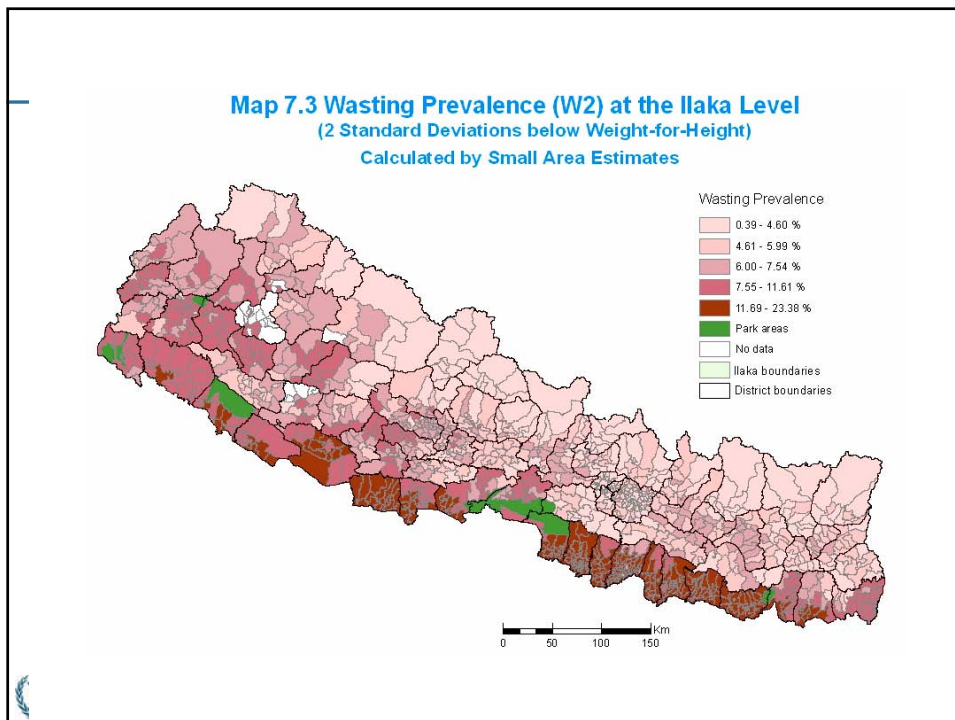
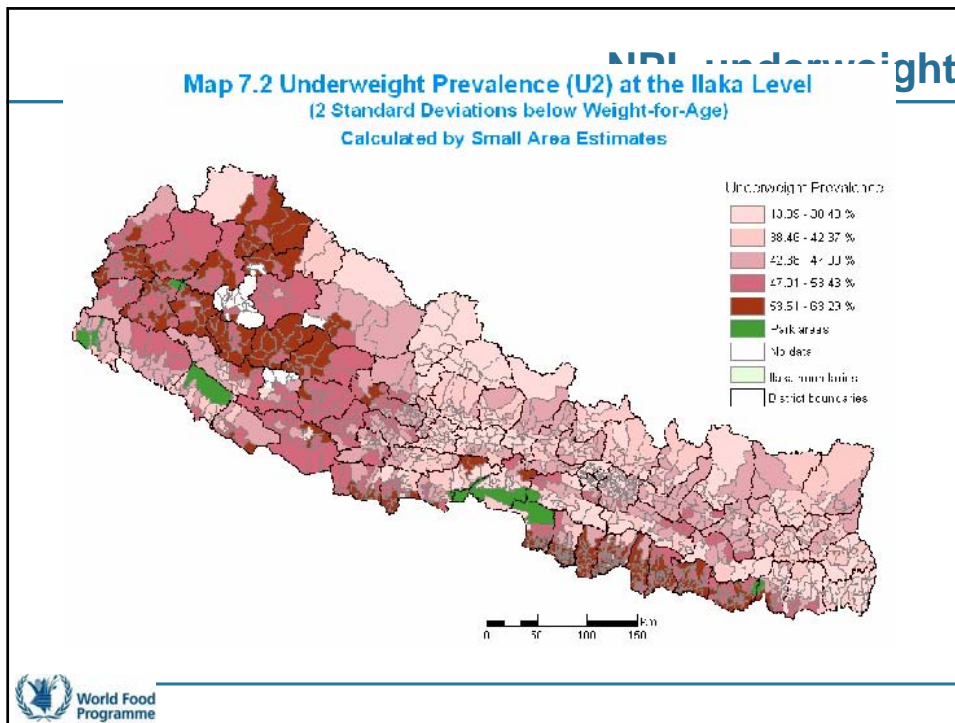


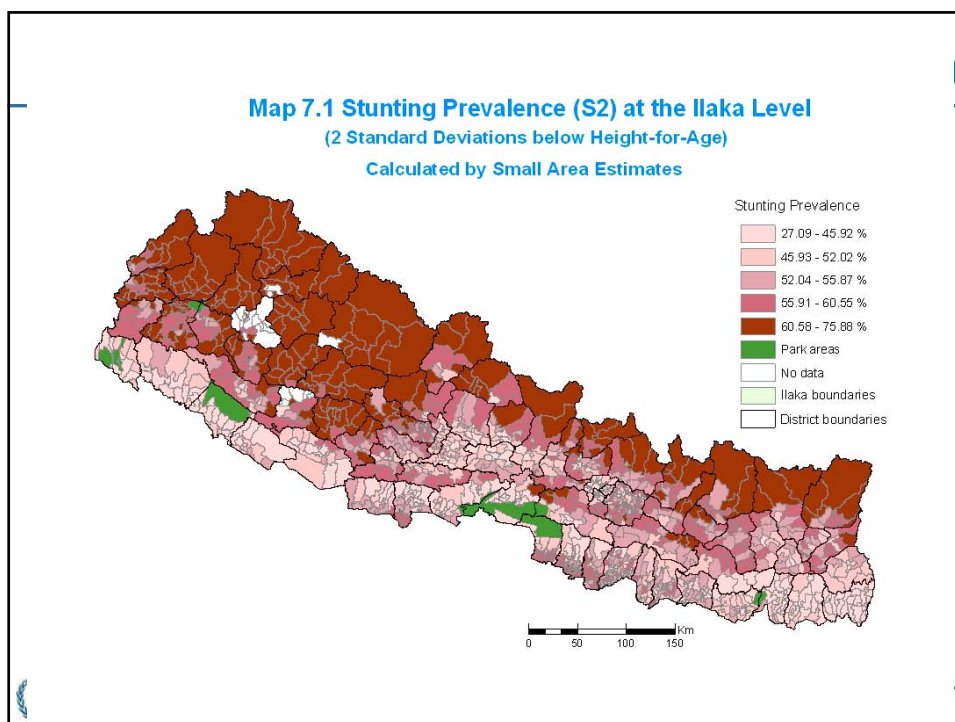
**Map 5.1 Poverty Incidence (P0) at the Ilaka Level**  
Calculated by Small Area Estimates



**Map 6.1 Prevalence of Caloric Intake Below the Threshold (K0) at the Ilaka Level**  
Calculated by Small Area Estimates







## Recommendations for Action

### Undernourished

National Statistics Offices (NSO) should try to obtain measures of hunger using as many methods as possible, including the calculation of Undernourished using Household Budget Survey (HBS) method.

This is of particular importance when the prevalence of moderate underweight is much higher than the prevalence of undernourished.

### Disaggregated Data

National Statistics Offices (NSO) should try to obtain disaggregated data for measures of hunger as well as poverty.

Investigate the feasibility of using Small Area Estimation techniques for prevalence of undernourishment and childhood malnutrition (underweight, stunting, and wasting)