



Using data in evidence-based decision-making  
Launch of Devinfo version 6.0 in Asia and the Pacific  
Siemreap, Cambodia, 2-5 February 2010

Using census data for informing policy: the  
example of Cambodia

by SAN Sy Than  
Director General, National Institute of Statistics  
Ministry of Planning, Cambodia



Decentralized statistical system (1)

- Decentralized statistical system
- Staff strength: 130 in 1999 increased to about 310 staff in 2010 at NIS central office
- 400 staff at local office in 1999 decreased to 370 staff in 2010
- Gov. budget for NIS in 1999: 0.25 million US\$ and in 2009: 1.14 million US\$. Donors budget in 1999: 0.70 million US\$ & 2009: 3.90 millions US\$ (including consultants)



## Decentralized statistical system (2)

- Approximately 150 staff at Statistics Units/working in Statistics at Min. of Economy and Finance, National Bank of Cambodia, Min. of Agriculture, Min. of Commerce, Min. of Health, Min. of Education Youth and Sports, etc
- Statistics Law enacted in May 2005
- Sub- decree on Organization and functioning of National Statistical System (NSS) in Jan. 2007
- Statistics Master Plan (SMP) 2008- 2015 in 2007



## Mechanisms of Coordination

- Statistics Coordination Committee (SCC) and Statistics Advisory Council (SAC)
- SCC had 5 meetings already while SAC only 2 meetings
- Sub- decree on designated official statistics will be submitted soon to Council of Ministers
- Strong demand for census data for updating and monitoring National Strategic Development Plan (NSDP), CMDG, sector plans, urban planning, small area statistics and other uses.

## Reorganization of NIS

- Reorganization of NIS already done in 2009 by adding 3 more departments to NIS:
  - Department of ICT
  - Department of National Accounts
  - Department of Statistical Standards and Analysis
- CAMInfo : One bureau of Statistical policies and international cooperation Dpt.

## Population censuses, other censuses, important surveys and works of NIS (1)

- We have **population census 1998 and 2008**
- We will have **Economic census in 2011** and plan for **Agriculture census in 2012**
- **CSES 2004**, CSES 2007, CSES 2008, **CSES 2009**, CSES 2010, CSES 2011,... (annual Cambodia Socio Economic Survey)
- CDHS 2000, CDHS 2005 and CDHS 2010

## Population censuses, other censuses, important surveys and works of NIS (2)



- CIPS 2004, CIPS 2013 ( Cambodia Inter Censal Population Survey)
- Establishment Listing 2009, Est. Survey 2010, Est. survey 2013, Est. Survey 2014 ( annual)
- CPI and National Accounts
- In collaboration with Directorate General of Planning and other stakeholders, analysis of poverty using CSES.
- Other subject matters statistics analysis (employment, child labour, gender, health, income...)

## CAMInfo as a tool to disseminate NSDP and CMDG achievements



- NIS started CAMInfo in 2003 with 9 full time staff supported by UNICEF and some years together with GTZ
- CamInfo was developed to support for policy-maker decisions and for monitoring of NSDP, MDGs and sectoral development plan (e.g. Education, health and food insecurity)
- In 2010, version 3.3 will include 2008 census data
- Internet: [www.caminfo.org](http://www.caminfo.org)

## Use of population census for policies (1)

- **Stat. Law (Article 4):** Stat. activities including censuses shall support the statistical data requirements of the **Royal Gov. policy-makers** in **formulating and evaluating economic and social policies** and programs, in addressing the **socio-economic development** and **welfare of the nation**, as well as the requirements of **decision-makers and researchers in the wider Cambodian** and **international communities**.
- Indicators in the areas of population growth and distribution, education, health, labor, infrastructure facilities and gender equity need our attention for necessary actions

## Use of population census for policies (2)

- Detailed analysis will cover several topics
- All these topics are useful for policies and programs
- Cambodia high population growth rate in the past (2.5% in 1998) was seen as a barrier to poverty reduction and development (but now reduced to 1.54% in 2008).

## Use of population census for policies (3)

### Indicators

- Growth rate declining from 2.5% in 1998 to 1.54 in 2008
- Urban population has increased to 19.5%. Among urban population, 64.56% from rural.

### Policy Implications

- Successful implementation of population policies as well as public cooperation in reducing fertility and also mortality
- We have great need to develop our villages to minimize migration to the cities and also to improve our cities and places of tourist interest like Siemreap.

## Use of population census for policies (4)

### Indicators

- Movement of large number of men to provinces in the north-east and north-west for farms and road building

### Policy Implications

- Development of infrastructures such as national roads, irrigation systems, dams to increase irrigated lands

## Use of population census for policies (5)

### Indicators

- Percentage of elderly increased from 5.3 to 6.3. Life expectancy has increased
- Literate persons has increased from 5.78 million to 8.96 million during ten-year period. Urban literacy rates continue to be higher than the rural areas

### Policy Implications

- We have to take note of the increase in the proportion of elderly and plan for their welfare
- This calls for increasing opportunities in rural areas

## Use of population census for policies (6)

### Indicators

- The proportion of females attending school continues to be less than males
- Most of the employed persons (72%) are in the agriculture sector

### Policy Implications

- Special attention has to be paid to stop or minimize the school drops outs especially among girls at primary level
- It is very important to develop large scale industries and in this connection the support of development partners, attract of FDI and private sector are very much needed.

## Use of population census for policies (7)

### Indicators

- Access to safe water sources has increased from 29% in 1998 to 54% of household in 2008
- Information on the type and number of assets in 2008

### Policy Implications

- It is top priority to provide safe drinking water to all population
- Approximates indicators of the economic condition of the people to inform policy makers in poverty reduction strategies.

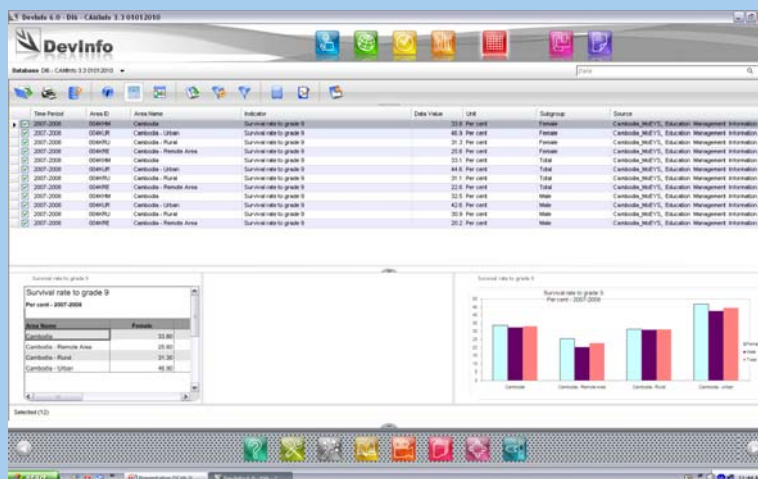
## The use of CamInfo Application

CamInfo application has been used for several purposes such as:

- The database center of all formal socio-economic data publishing
- The tools for all monitoring frame works (NSDP, CMDG, Poverty reduction, population policies...etc )
- Data storage for line ministries
- Tool to collect and to disseminate data
- Support information to policy makers and decision making e.g. for National Committee for Population and Development (NCPD).



## Cambodia MDG2: Achieve universal 9 year basic education



## Cambodia MDG4: Reduce child mortality

Infant mortality rate and Under-five mortality rate  
Deaths per 1,000 live births

| Subgroup                                | Infant mortality rate | Infant mortality rate | Infant mortality rate | Under-five mortality rate |
|---|-----------------------|-----------------------|-----------------------|---------------------------|
|   | 1998                  | 2000                  | 2005                  | 2005                      |
| Total                                   | 65                    | 72.30                 | 65                    |                           |
| Female                                  | 72                    | 82.20                 | 79                    | 97                        |
| Male                                    | 88                    | 102.80                | 97                    | 115                       |
| Birth size average or larger            |                       | 79.30                 |                       | 56                        |
| 4 or more years Previous birth interval |                       | 59.50                 |                       | 59                        |
| Central Year of Estimate                |                       | 95                    |                       | 66                        |
| Previous birth interval 3 yr            |                       | 76.10                 |                       | 71                        |
| Previous birth interval 2 yr            |                       | 86.80                 |                       | 79                        |
| Mother's age at birth 20-29 yr          |                       | 88.30                 |                       | 79                        |
| Mother's age at birth <20 yr            |                       | 101.10                |                       | 85                        |
| Mother's age at birth 30-39 yr          |                       | 94.30                 |                       | 95                        |
| Birth size small or very small          |                       | 145                   |                       | 95                        |
| Mother's age at birth 40-49 yr          |                       | 117.30                |                       | 138                       |
| Previous birth interval <2 yr           |                       | 133.20                |                       | 162                       |

## CONCLUSIONS

- All these data and more information from censuses as well as other surveys can shape the implementation of the NSDP, monitor CMDG, support policies and decision making.
- CAMInfo: Important tool for monitoring NSDP, CMDG, updating population policies and tool for dissemination including 2008 Population Census.