

ECONOMIC POLICY AND COMPETITIVENESS
RESEARCH CENTER

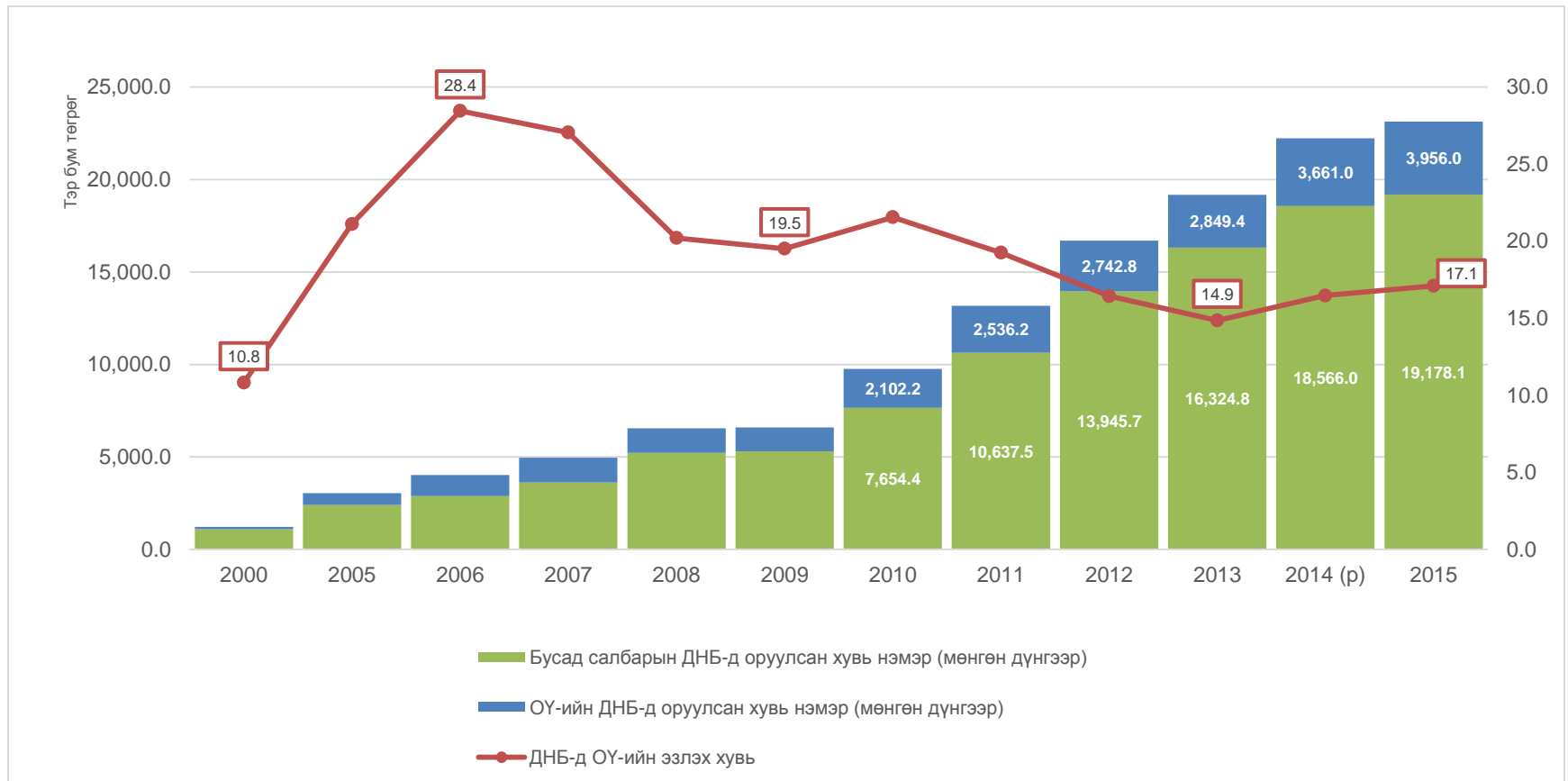
ЭДИЙН ЗАСГИЙН БОДЛОГО, ӨРСӨЛДӨХ
ЧАДВАРЫН СУДАЛГААНЫ ТӨВ

Structure of Mongolian Economy and Economic diversification of Mongolia

Lakshmi B.
Director

Mineral dependency indicators

Extractive industries share of total GDP of Mongolia



Source: NSO

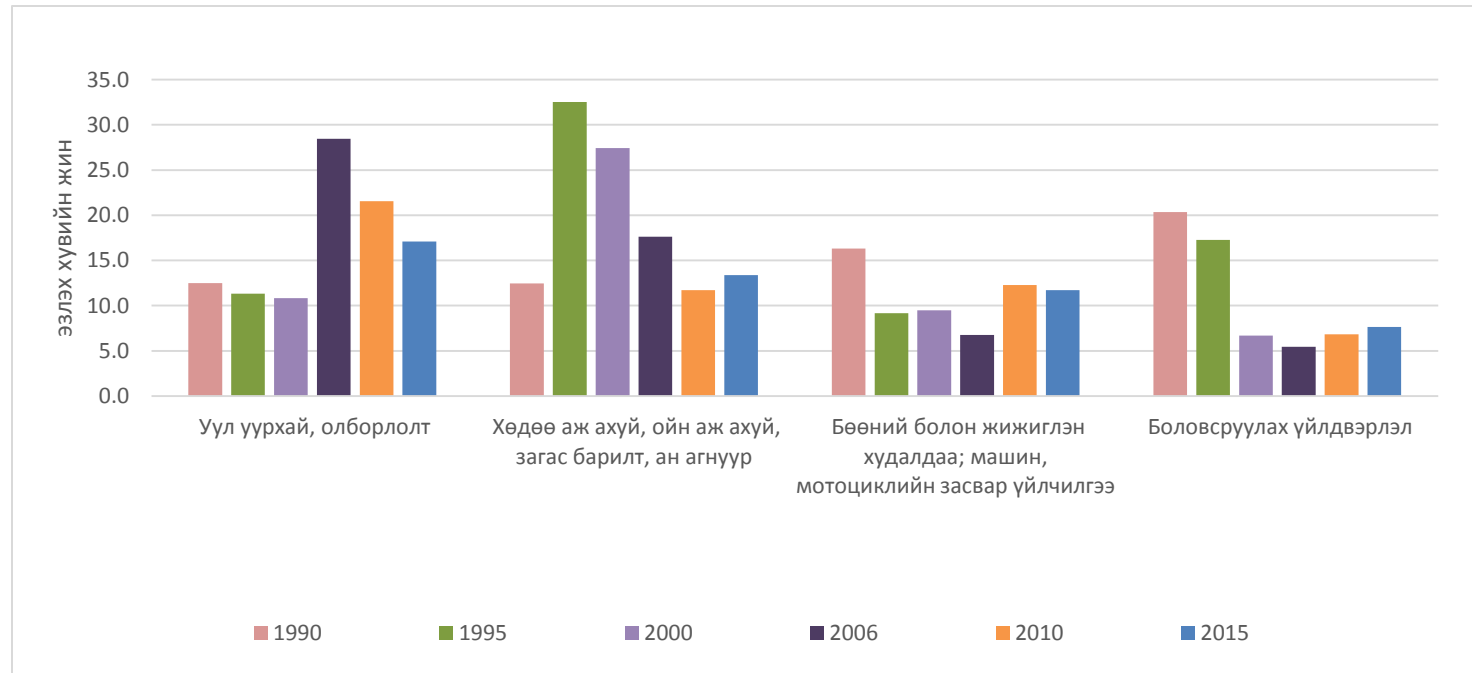
Share of extractive industry in the state budget revenue



Source: EITI, NSO

Economic diversification indicators

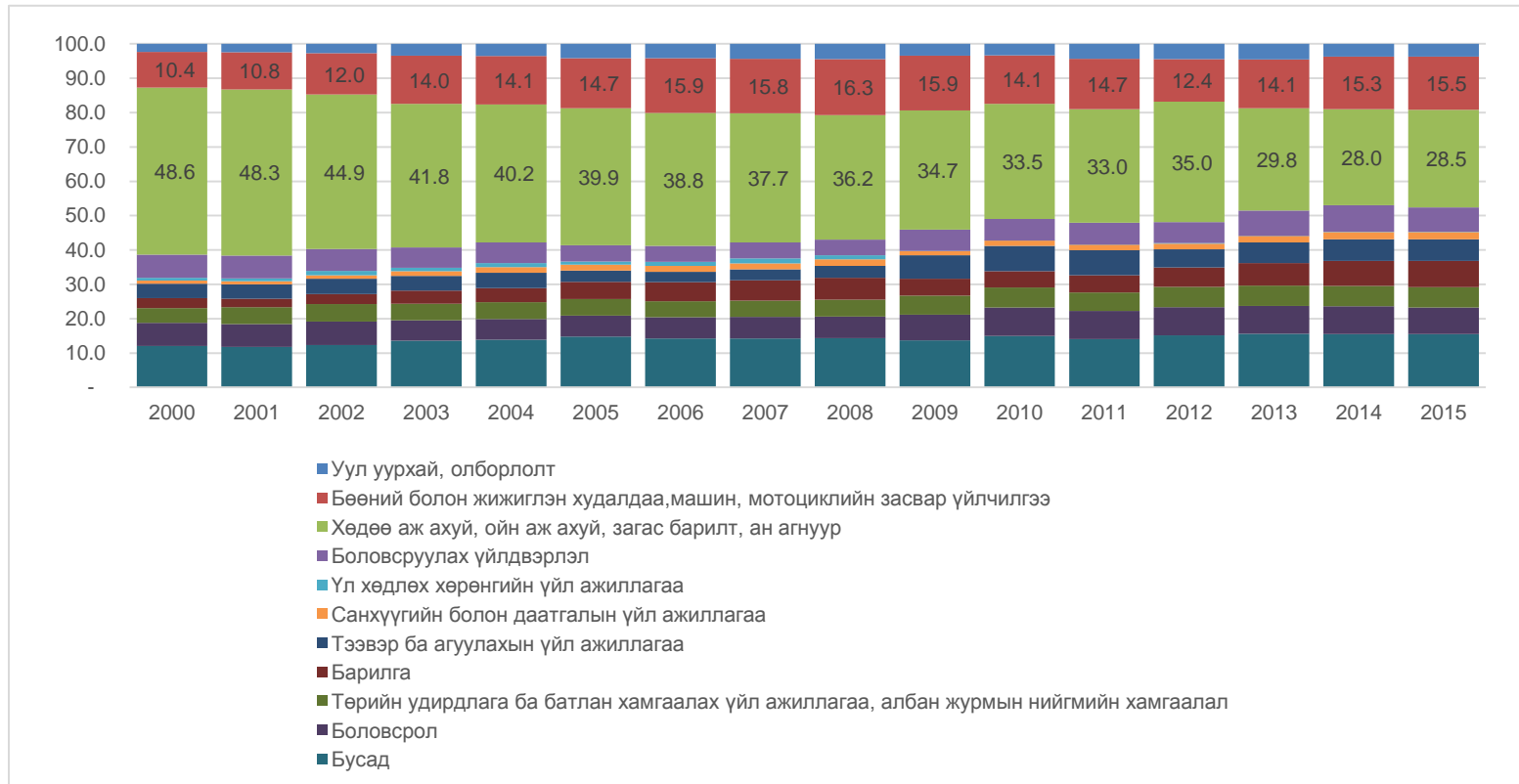
GDP by sectors



Source: NSO

Economic diversification indicators

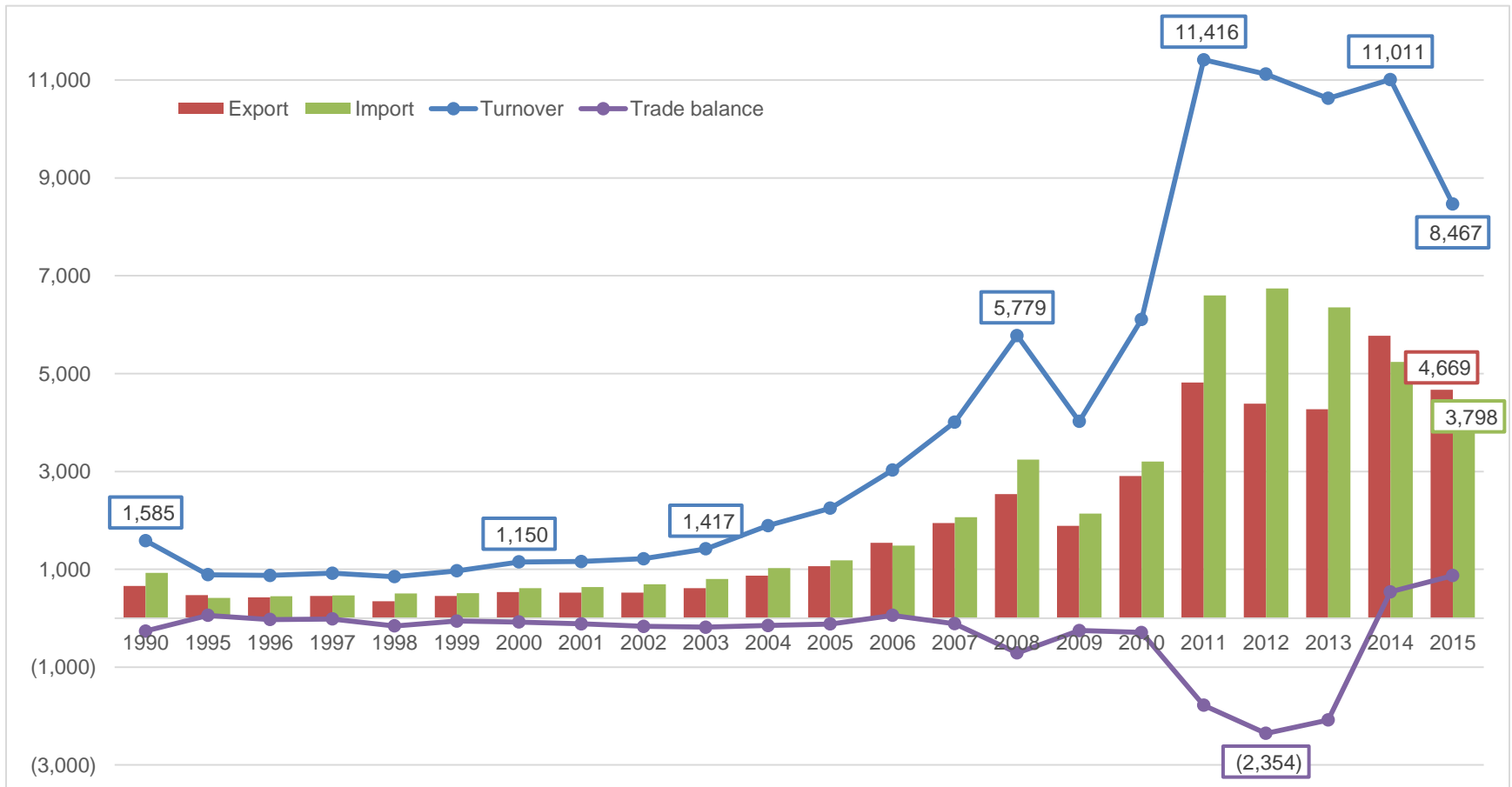
Share of economic sectors in the labor market



Source: NSO

Foreign Trade

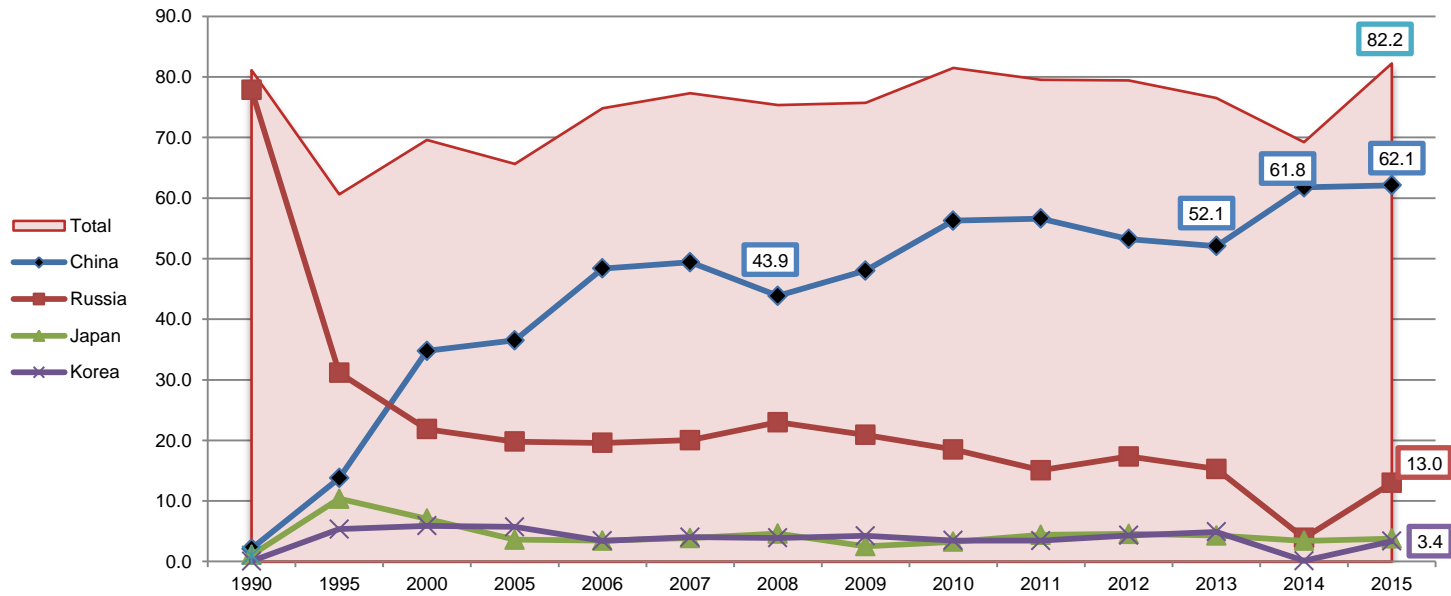
Main indicators of Mongolia's foreign trade



Source: UN COMTRADE statistics, Customs statistics of Mongolia (1995-2015) by current prices

Foreign Trade

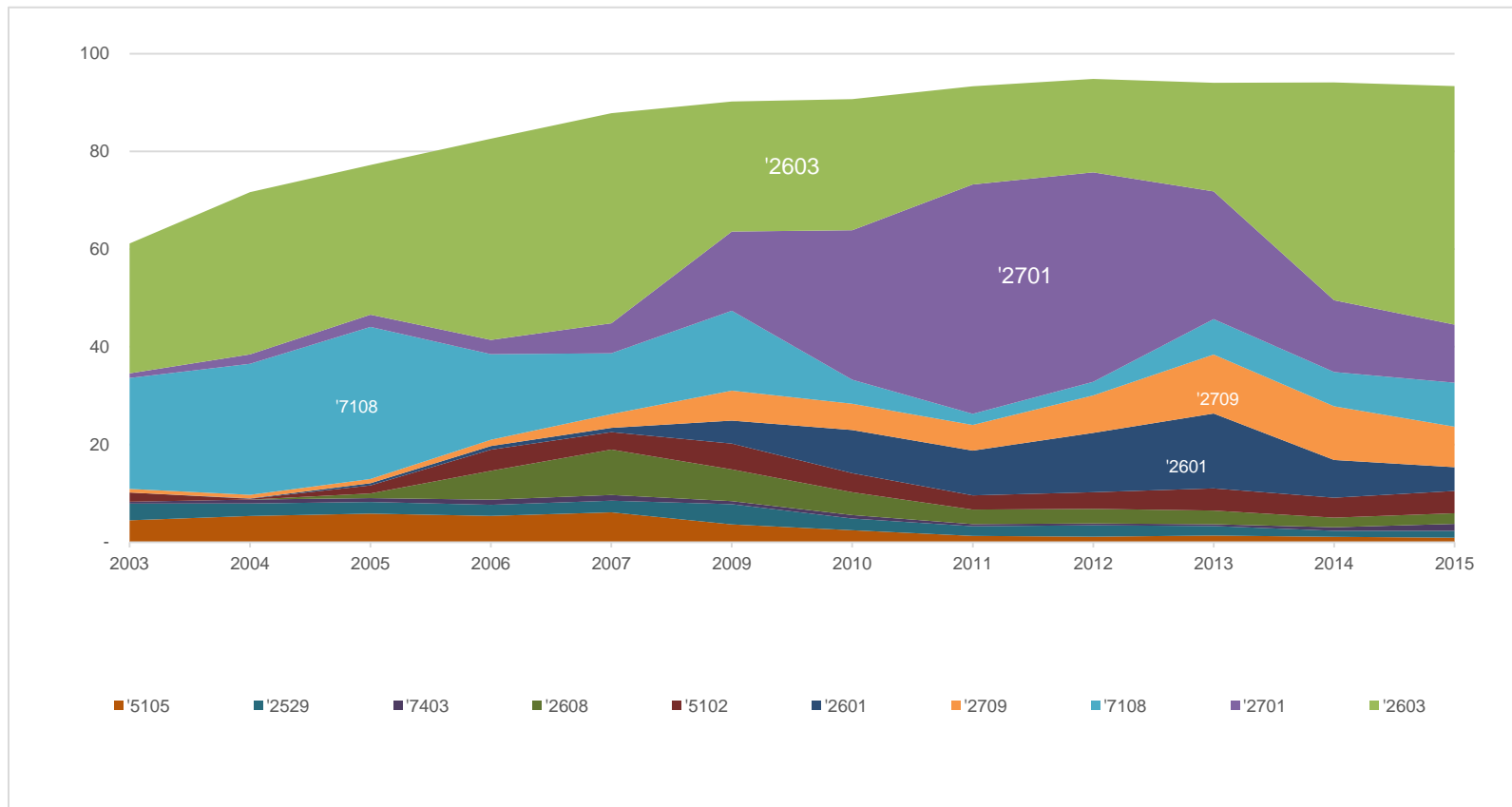
Share of partner countries in Mongolia's foreign trade (1990-2015)



Source: UN COMTRADE statistics, Customs statistics of Mongolia

Foreign Trade

Share of main export goods in total export



Source: UN COMTRADE statistics, Customs Statistics of Mongolia

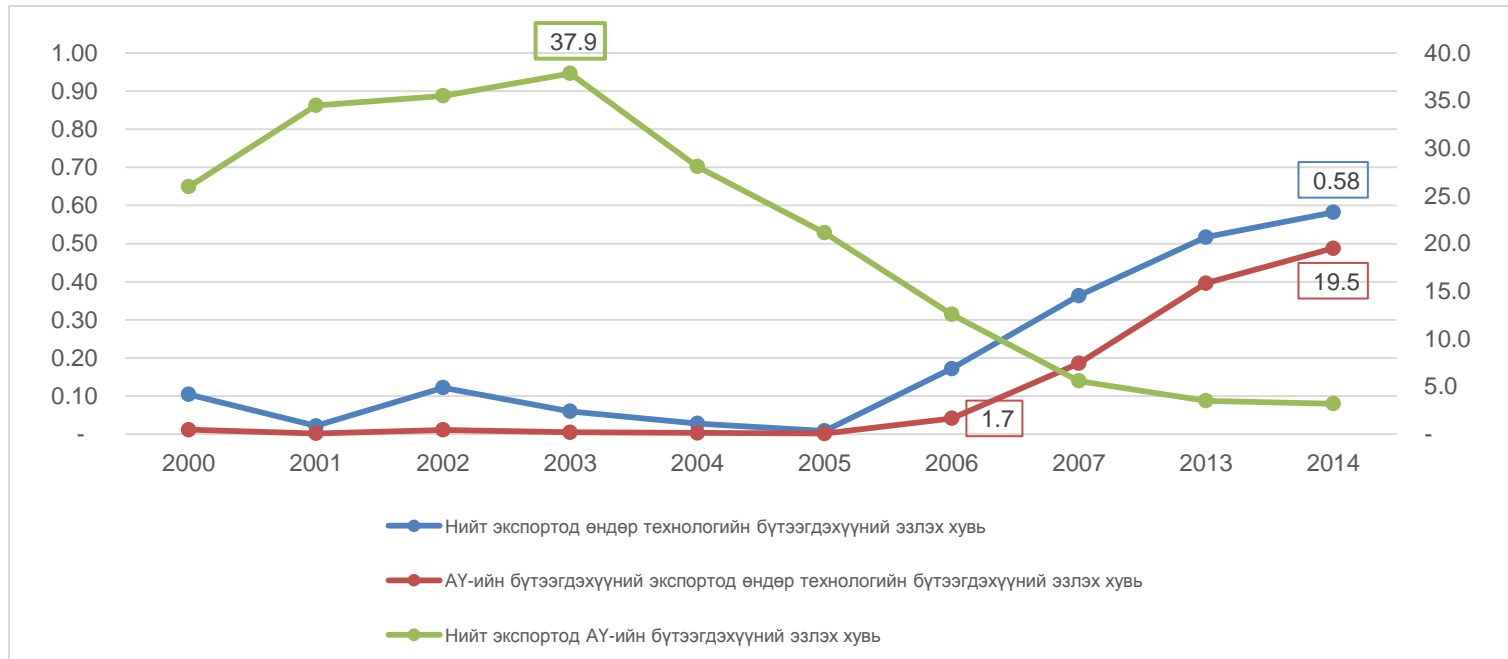
Main export products

Share of minerals in the total export

| HS | Product description | 2005 | 2010 | 2011 | 2012 | 2013 | 2014 | 2015 |
|-------------------------------------|---|---------------|---------------|---------------|---------------|---------------|---------------|---------------|
| '2603 | Copper ore and concentrate | 30.6% | 26.8% | 20.1% | 19.1% | 22.2% | 44.6% | 48.8% |
| '2701 | Coal | 2.5% | 30.6% | 47.0% | 42.9% | 26.1% | 14.7% | 11.9% |
| '7108 | Gold unwrought or in semi-manufactured forms, or in powder form | 31.1% | 4.9% | 2.3% | 2.8% | 7.3% | 7.0% | 9.0% |
| '2709 | Crude oil | 0.9% | 5.4% | 5.3% | 7.7% | 12.1% | 11.0% | 8.3% |
| '2601 | Iron ore and concentrate | 0.4% | 8.8% | 9.2% | 12.1% | 15.3% | 7.7% | 4.9% |
| '5102 | Uncombed animal wool, fine and coarse hair | 1.6% | 3.9% | 2.9% | 3.4% | 4.5% | 4.1% | 4.6% |
| '2608 | Zinc ore and concentrate | 1.0% | 4.7% | 3.0% | 3.0% | 2.8% | 2.0% | 2.2% |
| '7403 | Refined copper and unwrought alloys | 0.8% | 0.7% | 0.4% | 0.4% | 0.4% | 0.7% | 1.4% |
| '2529 | Feldspar, leucite, nepheline and nepheline syenite, fluorspar | 2.4% | 2.4% | 2.0% | 2.3% | 2.0% | 1.2% | 1.4% |
| '5105 | Combed animal wool, fine and coarse hair | 5.8% | 2.5% | 1.3% | 1.1% | 1.4% | 1.1% | 0.9% |
| '2613 | Molybdenum ore and concentrate | 4.4% | 1.8% | 1.0% | 0.9% | 0.7% | 0.6% | 0.6% |
| HHI – Export diversification | | 0.1999 | 0.1844 | 0.2752 | 0.2448 | 0.1647 | 0.2459 | 0.2731 |
| Share | | 42% | 81% | 90% | 91% | 88% | 89% | 87% |

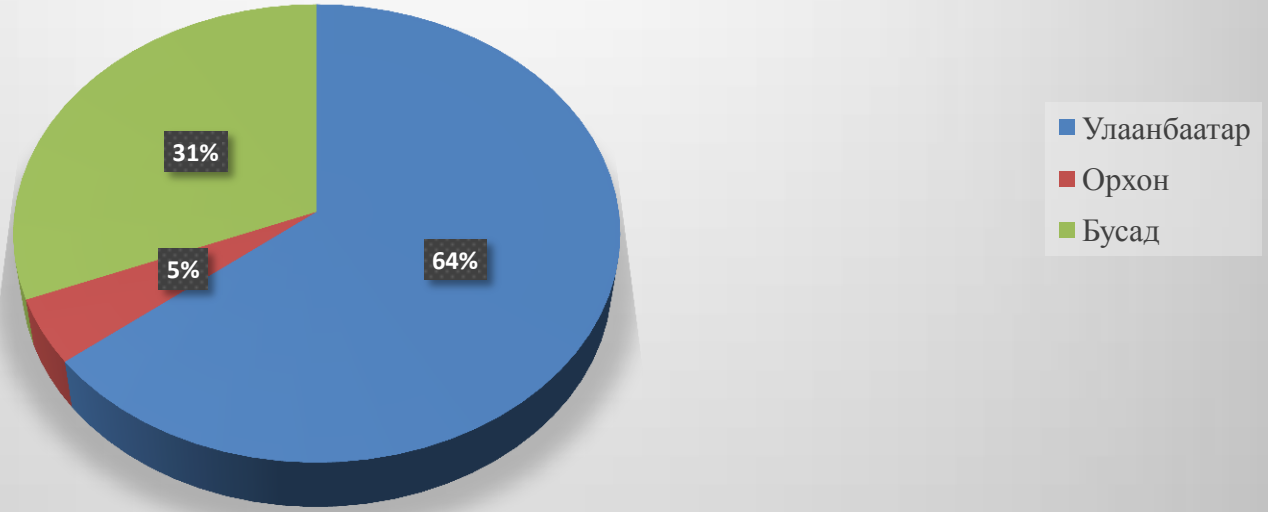
Foreign Trade

Share of technology intensive goods and industrial goods in the total export



GDP composition

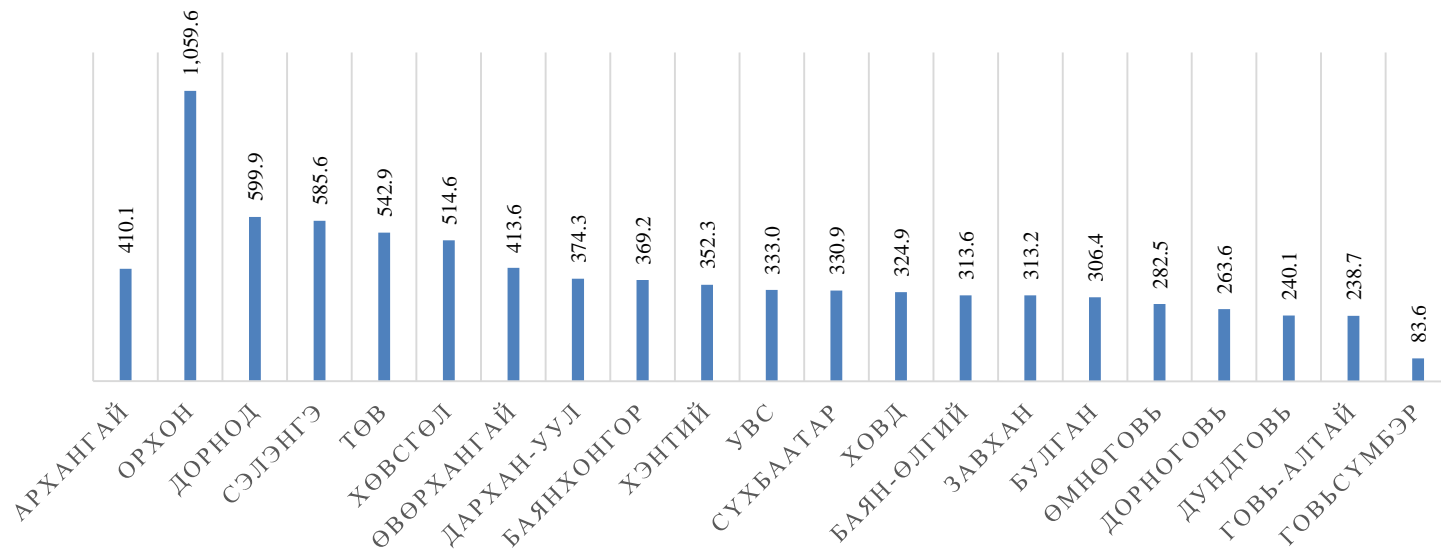
2015 GDP 23,134 billion MNT



Source: NSO

GDP composition by provinces

GDP OF THE 21 PROVINCES, 2015 ОНД



Source: NSO

Thank you!



11-321927



www.ecrc.mn
www.aimagindex.mn



info@ecrc.mn



Twitter / [ursulduhchadvar](#)



YouTube / [ecrcmn](#)



Facebook / [ecrcmn](#)

