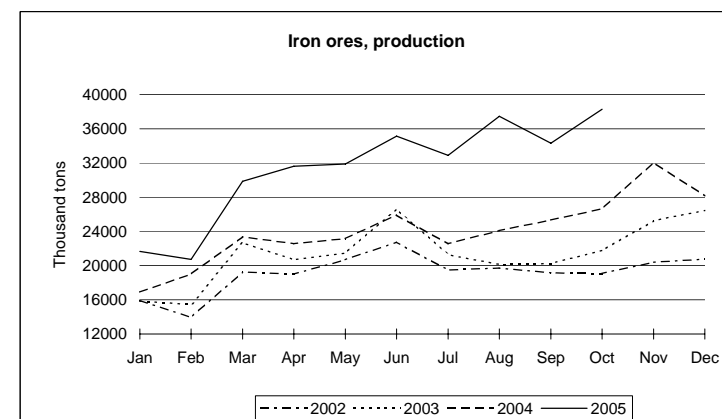
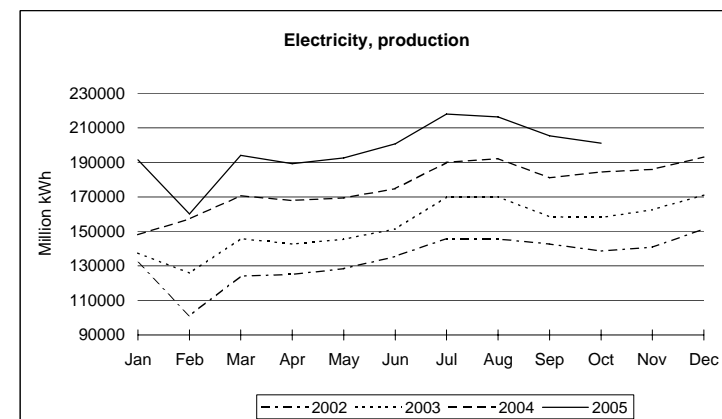
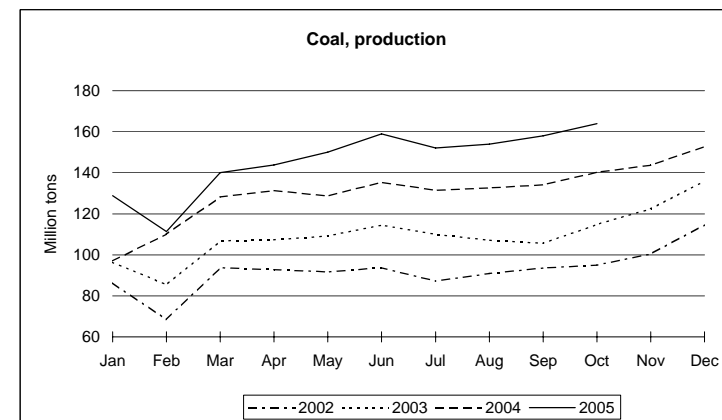


China

National currency: Yuan Renminbi

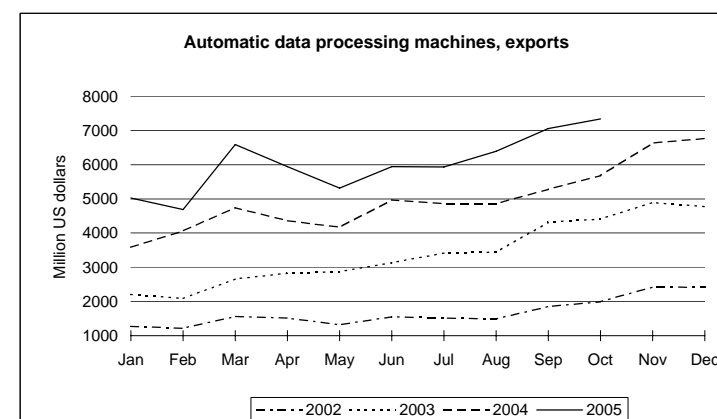
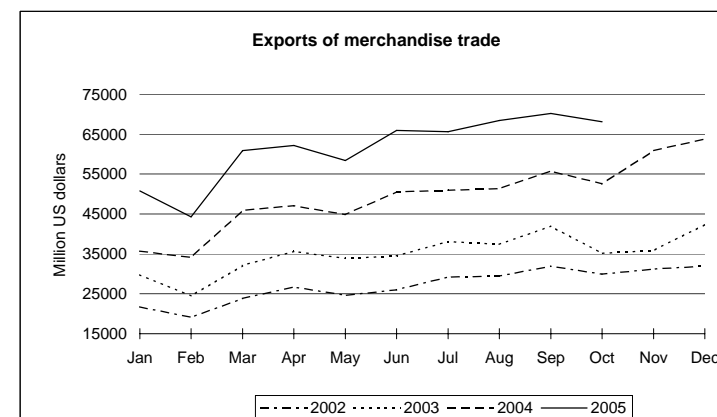
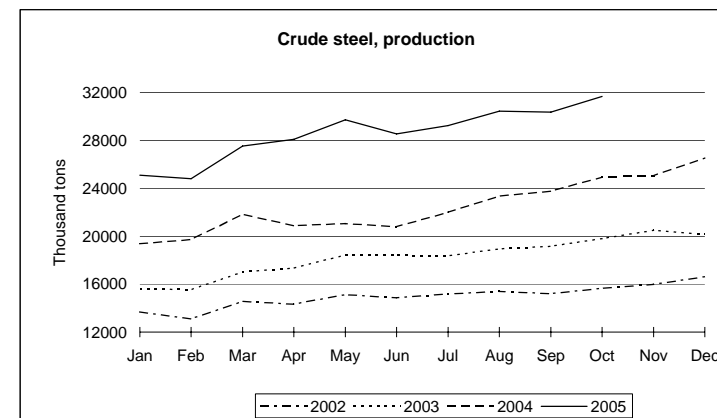
Industry		Jan	Feb	Mar	Apr	May	Jun	Jul	Aug	Sep	Oct	Nov	Dec
Production of selected commodities													
• Beer	2002	1066	1350	1922	2203	2378	2965	2999	2667	2458	1637	1170	1084
<i>Million litres</i>	2003	1212	1489	1690	2146	2314	3111	3095	3217	2630	1851	1398	1269
	2004	1388	1489	2034	2616	2953	3296	3468	3383	2759	2131	1742	1560
	2005	1471	1484	2139	2639	3147	3585	3859	3512	3088	2250		
• Cement	2002	46952	37008	53389	60077	69070	63346	60296	62410	66413	65082	65148	65322
<i>Thousand tons</i>	2003	47242	41598	60747	69342	73687	77533	69418	73046	75545	76370	75666	75530
	2004	57051	57214	72802	80560	83356	83874	77621	80309	82921	87559	88354	87026
	2005	54611	43436	72795	87621	92856	95285	88106	91291	95985	95386		
• Coal	2002	86	68	94	93	92	94	87	91	94	95	100	115
<i>Million tons</i>	2003	96	85	107	107	109	114	110	107	106	115	122	136
	2004	97	110	128	131	129	135	132	133	134	140	144	153
	2005	129	111	140	144	150	159	152	154	158	164		
• Cotton fabrics a/	2002	1610	1320	1822	1910	1870	1990	1890	1886	1950	1894	1938	2114
<i>Million metres</i>	2003	1714	1573	1873	1976	2021	2256	2088	2038	2268	2075	2185	2340
	2004	1908	2378	2395	2384	2418	2556	2415	2482	2487	2562	2684	2987
	2005	2392	2276	2781	3084	3126	3391	3150	3022	3213	3147		
• Cotton yarn	2002	586	467	620	673	686	719	680	695	712	698	740	717
<i>Thousand tons</i>	2003	647	613	781	786	747	822	798	813	819	759	796	839
	2004	613	797	865	919	890	958	896	907	995	965	1025	1128
	2005	830	787	1048	1127	1154	1236	1154	1560	1677	1686		
• Electricity	2002	131670	101040	124100	124970	128370	135480	145800	145600	142660	138520	140820	151410
<i>Million kWh</i>	2003	137550	125800	145810	142720	145400	151430	169930	170030	158460	158110	162460	171060
	2004	147970	157050	170670	167890	169290	174810	189880	192100	180954	184431	185877	193130
	2005	191490	160110	194050	189210	192470	200680	217890	216210	205330	201100		
• Gas, natural	2002	116793	110564	108228	102389	103946	97328	102778	102700	100559	102817	113095	119440
<i>Terajoules</i>	2003	124930	107527	113095	106437	106710	98366	102092	100602	102092	109544	106936	124821
	2004	128174	125566	125566	116220	121095	115133	119232	123331	120772	133763	138980	152021
	2005	167670	140843	153884	146432	149040	142333	147177	151276	146804	158728		
• Iron ores	2002	15924	13946	19273	18991	20682	22740	19474	19705	19133	19076	20395	20752
<i>Thousand tons</i>	2003	15870	15430	22668	20702	21453	26626	21295	20114	20253	21774	25265	26465
	2004	16897	18987	23378	22551	23154	25943	22561	24105	25329	26641	32065	28157
	2005	21647	20716	29872	31609	31873	35133	32905	37447	34311	38275		
• Petroleum, crude	2002	14290	12771	14223	13696	14302	14807	14426	14812	14099	14637	13912	14314
<i>Thousand tons</i>	2003	14338	13116	14558	14159	14573	14194	14368	14392	13851	14387	13915	14591
	2004	14524	13800	14405	14118	14727	14409	14834	15045	14675	14738	14520	14922
	2005	15323	13814	15602	14737	15336	14982	15456	15533	14859	15455		
• Pig iron	2002	12927	12622	13703	13654	14236	14144	14201	14389	14227	14644	14528	15463
<i>Thousand tons</i>	2003	14194	14634	15923	15925	16950	16632	17033	17458	17336	18028	17765	18884
	2004	17816	18028	20718	19305	19283	19120	20874	21646	21631	23023	23465	25071
	2005	23434	22799	25967	27195	27700	27200	27633	28091	28037	29717		
• Sodium hydroxide (caustic soda)	2002	610	557	643	696	704	670	747	681	710	717	711	731
<i>Thousand tons</i>	2003	686	704	781	780	776	788	789	787	796	827	811	831
	2004	811	841	866	860	887	885	845	868	884	939	928	968
	2005	948	904	1003	1027	1090	1029	1016	1039	1047	1118		



China

National currency: Yuan Renminbi

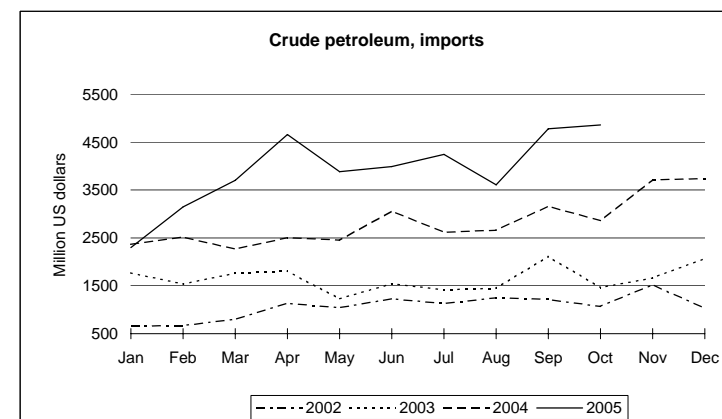
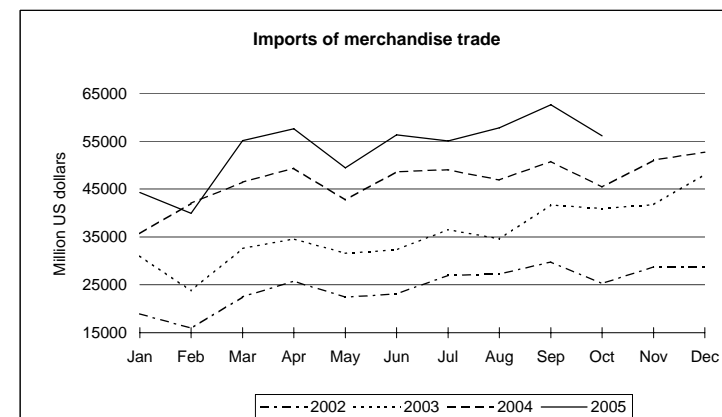
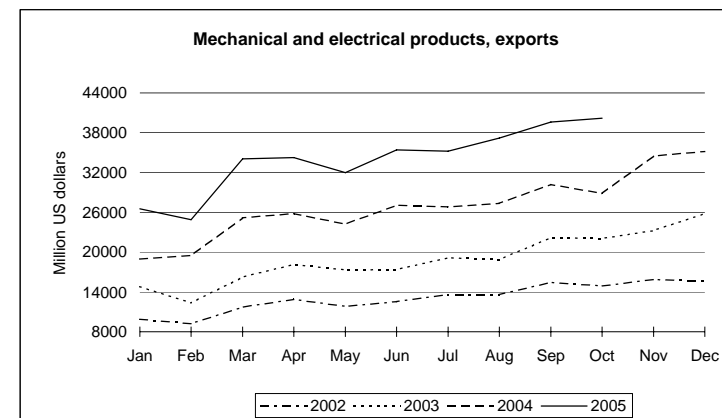
		Jan	Feb	Mar	Apr	May	Jun	Jul	Aug	Sep	Oct	Nov	Dec
• Steel, crude <i>Thousand tons</i>	2002	13678	13089	14574	14323	15122	14859	15190	15394	15221	15664	15971	16626
	2003	15623	15534	17025	17343	18449	18417	18365	18946	19174	19817	20492	20158
	2004	19392	19724	21848	20875	21052	20798	21988	23356	23758	24937	25036	26533
	2005	25095	24806	27544	28086	29730	28547	29244	30456	30357	31673		
• Sulphuric acid <i>Thousand tons</i>	2002	2002	2138	2396	2466	2414	2450	2419	2443	2632	2680	2617	2547
	2003	2192	3613	2692	2774	2810	2795	2706	2875	2915	2946	2876	2958
	2004	2650	2883	3041	3041	3080	3170	3003	3049	3194	3394	3358	3461
	2005	3077	3433	3579	3701	3802	3858	3715	3836	3887	3970		
Transport													
Aviation, civil cargo													
• Total <i>Million ton-kilometres</i>	2002	330	370	420	440	420	370	430	490	470	490	420	410
	2003	445	405	460	370	360	370	430	490	550	550	550	570
	2004	450	510	610	620	560	570	610	590	670	640	610	620
	2005	580	450	670	660	600	610	650	680	730	670		
Aviation, civil traffic													
• Total <i>Million passenger-kilometres</i>	2002	8190	9110	10260	10900	10320	9040	10640	12180	11700	12050	10370	10120
	2003	11007	10008	11376	9140	2360	4540	10620	14660	13490	14430	12590	12320
	2004	14320	11520	13310	14910	13810	13670	17340	17820	15950	16710	14790	13170
	2005	13610	14540	15140	16360	16310	16080	19290	19770	18320	19390		
Railway, passenger travel													
• Total <i>Million passenger-kilometres</i>	2002	34620	43860	41480	37230	38580	33540	41730	44680	38580	39860	33350	33010
	2003	42612	49889	41934	34480	15920	24420	39530	45280	40700	42270	37250	35440
	2004	54280	53670	43440	41440	44270	39420	48610	51300	45150	45140	39200	37420
	2005	48400	62320	52890	47670	48800	43790	55330	57560	47870	50820		
Railway, freight													
• Total <i>Million ton-kilometres</i>	2002	126580	106290	127170	126700	130180	121880	125710	125990	124150	129780	127320	129480
	2003	127637	112901	139328	133290	140980	136320	136710	138950	135400	141780	137770	145770
	2004	140060	134240	152250	148050	152830	148890	150120	152560	153740	161400	156140	158370
	2005	167950	142810	172260	169620	174710	167040	169830	168820	167560	178030		
International trade													
Exports of merchandise trade													
• Total, value <i>Million US dollars</i>	2002	21700	19130	23790	26720	24640	26020	29210	29440	31910	29950	31210	31890
	2003	29776	24456	32091	35617	33842	34476	38110	37415	41941	35168	35886	42336
	2004	35712	34058	45850	47120	44870	50500	50960	51350	55760	52510	60920	63780
	2005	50760	44270	60870	62150	58430	65960	65580	68400	70190	68090		
• Automatic data processing machines, value <i>Million US dollars</i>	2002	1269	1211	1563	1512	1320	1548	1514	1488	1854	1990	2426	2417
	2003	2210	2081	2654	2829	2874	3129	3412	3444	4322	4410	4889	4769
	2004	3588	4064	4743	4358	4175	4967	4855	4860	5272	5677	6638	6768
	2005	5023	4689	6584	5945	5315	5941	5932	6394	7056	7335		
• Automatic data processing machines, volume <i>Thousand units</i>	2002	51250	44210	56470	57170	48330	48970	49580	53160	64610	62990	72770	70210
	2003	64610	58770	70660	72120	64910	66890	71900	77210	91660	91150	101120	104680
	2004	71140	83710	93400	90750	85600	89970	87600	91570	100650	96260	119290	124430
	2005	89330	79770	104780	108200	90930	105500	104070	118560	121070	119450		
• Footwear and parts, value <i>Million US dollars</i>	2002	909	728	756	861	894	968	1072	1023	1021	912	928	1021
	2003	1072	798	1010	1011	1039	1106	1202	1106	1171	1102	1036	1304
	2004	1162	940	1229	1162	1195	1402	1434	1538	1332	1152	1210	1580
	2005	1511	1177	1406	1476	1435	1748	1834	1880	1720	1459		



China

National currency: Yuan Renminbi

		Jan	Feb	Mar	Apr	May	Jun	Jul	Aug	Sep	Oct	Nov	Dec	
• Garments and clothing accessories, value <i>Million US dollars</i>	2002	2969	2324	2586	2979	2848	3179	4143	4461	4546	3956	3499	3709	
	2003	3753	2561	3423	3822	3661	4118	5265	5371	5468	5071	4432	4990	
	2004	4212	3067	4784	4597	4143	5152	6160	6060	6540	5693	5667	5564	
	2005	5306	4009	4675	5279	5118	6716	7598	7956	7888	6557			
• Mechanical and electrical products, value <i>Million US dollars</i>	2002	9882	9226	11735	12889	11804	12526	13576	13609	15417	14924	15873	15655	
	2003	14791	12354	16251	18135	17309	17378	19157	18874	22172	22039	23238	25795	
	2004	18965	19498	25197	25810	24204	27050	26832	27365	30198	28848	34474	35147	
	2005	26516	24870	34046	34269	31968	35399	35211	37205	39623	40211			
• Toys, value <i>Million US dollars</i>	2002	394	284	324	377	376	426	532	630	706	622	500	407	
	2003	408	299	378	428	398	434	577	642	764	685	500	468	
	2004	413	295	411	444	399	492	609	742	773	663	597	543	
	2005	403	301	391	454	429	538	656	799	825	746			
Imports of merchandise trade														
• Total, value <i>Million US dollars</i>	2002	18970	15920	22480	25750	22430	23100	26990	27210	29790	25200	28740	28730	
	2003	31016	23780	32549	34601	31604	32336	36514	34612	41652	40909	41759	48062	
	2004	35737	42030	46390	49370	42770	48650	49010	46860	50750	45440	51010	52710	
	2005	44260	39920	55140	57560	49440	56280	55040	57810	62620	56080			
• Automatic data processing machines, parts, value <i>Million US dollars</i>	2002	680	534	822	868	684	709	807	754	887	750	879	845	
	2003	911	706	892	903	837	891	940	929	1168	1052	1056	1208	
	2004	881	1013	1150	1104	962	1018	1108	1139	1312	1275	1329	1369	
	2005	1101	1057	1372	1357	1195	1329	1283	1358	1479	1286			
• Automatic data processing machines, parts, volume <i>Thousand tons</i>	2002	13.2	10.5	16.5	18.2	13.9	14.4	17.5	15.2	17.5	15.7	17.1	14.1	
	2003	18.9	12.8	16.8	17.0	16.6	16.6	17.8	17.0	21.1	18.6	18.4	20.2	
	2004	15.5	17.7	20.7	19.9	16.3	19.6	21.7	21.6	24.5	22.8	25.0	24.7	
	2005	20.3	18.7	24.0	24.3	20.1	21.7	21.3	21.0	22.6	20.1			
• Electronic integrated circuits and microassemblies, value <i>Million US dollars</i>	2002	1460	1262	1845	1996	1805	1889	2247	2317	2892	2563	2791	2640	
	2003	2627	1997	2801	2955	2786	2936	3530	3764	4826	4277	4146	4488	
	2004	3533	3943	4686	4856	4568	4945	5283	5175	6007	5901	5915	5947	
	2005	5082	4998	6191	6350	5759	6451	6397	7256	8038	7794			
• Electronic integrated circuits and microassemblies, volume <i>Million units</i>	2002	2314	1726	2521	2825	2708	2640	3190	3164	3550	3256	3357	3189	
	2003	3283	2634	3514	3670	3529	3525	4148	4326	5075	4621	4629	4948	
	2004	3893	4564	5379	5354	4966	5126	5513	5509	5785	5644	5742	6097	
	2005	4759	4498	5667	6228	5465	6010	6269	7084	7741	7211			
• Petroleum, crude, value <i>Million US dollars</i>	2002	660	669	800	1138	1044	1229	1131	1251	1217	1070	1523	1029	
	2003	1770	1537	1765	1807	1227	1545	1415	1449	2119	1460	1663	2068	
	2004	2363	2519	2267	2504	2454	3063	2622	2657	3160	2856	3715	3734	
	2005	2301	3144	3701	4656	3883	3987	4242	3607	4775	4856			
• Petroleum, crude, volume <i>Thousand tons</i>	2002	4710	4510	5370	6490	5550	6370	6010	6560	6220	5110	7330	5190	
	2003	8360	6580	7280	7890	6040	7660	6830	6790	9790	6930	7640	9340	
	2004	10300	10530	9320	10000	9620	11270	9610	9330	10350	9280	11120	12100	
	2005	7820	10350	11470	12250	10410	11250	11070	8760	10850	11250			
• Plastic in primary form, value <i>Million US dollars</i>	2002	968	807	1182	1320	1044	1006	1109	1199	1256	1042	1199	1199	
	2003	1421	1014	1288	1212	1106	1186	1332	1320	1523	1339	1427	1567	
	2004	1365	1681	1627	1653	1452	1724	1749	1807	1958	1678	1988	1986	
	2005	1639	1440	2265	2201	1836	2171	2155	2224	2405	1902			



China

National currency: Yuan Renminbi

	Jan	Feb	Mar	Apr	May	Jun	Jul	Aug	Sep	Oct	Nov	Dec	
• Plastic in primary form, volume <i>Thousand tons</i>	2002	1280	1070	1560	1630	1200	1110	1260	1390	1390	1160	1390	1410
	2003	1740	1130	1350	1240	1160	1330	1480	1460	1650	1420	1500	1630
	2004	1440	1690	1540	1520	1340	1590	1590	1610	1630	1340	1540	1530
	2005	1260	1130	1740	1620	1350	1660	1700	1740	1810	1370		
• Steel products, value b/ <i>Million US dollars</i>	2002	756	669	1011	1072	972	1093	1246	1290	1193	889	973	1202
	2003	1544	1259	1655	1824	1657	1848	1924	1503	1781	1573	1635	1719
	2004	1776	1886	2058	2167	1515	1761	1713	1511	1521	1389	1632	1827
	2005	1837	1573	2467	2515	2130	2414	2060	2001	2230	1723		
• Steel products, volume b/ <i>Thousand tons</i>	2002	1490	1300	2120	2360	2090	2350	2560	2520	2180	1600	1730	2190
	2003	2990	2460	3130	3390	3050	3480	3660	2770	3330	2840	3060	3060
	2004	3250	3360	3460	3390	2130	2440	2220	1860	1780	1630	1790	1950
	2005	1920	1590	2460	2560	2160	2520	2130	2160	2490	1930		
Finance													
Money supply: money (M1)													
• Total	2002	6058	5870	5947	6046	6128	6314	6349	6487	6680	6710	6799	7088
<i>Billion national currency units</i>	2003	7241	6976	7144	7132	7278	7592	7615	7703	7916	8027	8081	8412
	2004	8381	8356	8582	8560	8678	8863	8798	8913	9044	9078	9239	9597
	2005	9708	9282	9474	9459	9580	9860	9766	9938	10096	10175		
Exchange rate													
• Rate c/ <i>National currency units per US dollar</i>	2002	8.277	8.277	8.277	8.277	8.277	8.277	8.277	8.277	8.277	8.277	8.277	8.277
	2003	8.277	8.277	8.277	8.277	8.277	8.277	8.277	8.277	8.277	8.277	8.277	8.277
	2004	8.277	8.277	8.277	8.277	8.277	8.277	8.277	8.277	8.277	8.277	8.277	8.277
	2005	8.277	8.277	8.277	8.277	8.277	8.277	8.237	8.102	8.092	8.089		

a/ Including pure cotton cloth, blending fabric cloth and chemical fibre cloth. b/ Refers only to rolled steel. c/ Mid-point rate.

